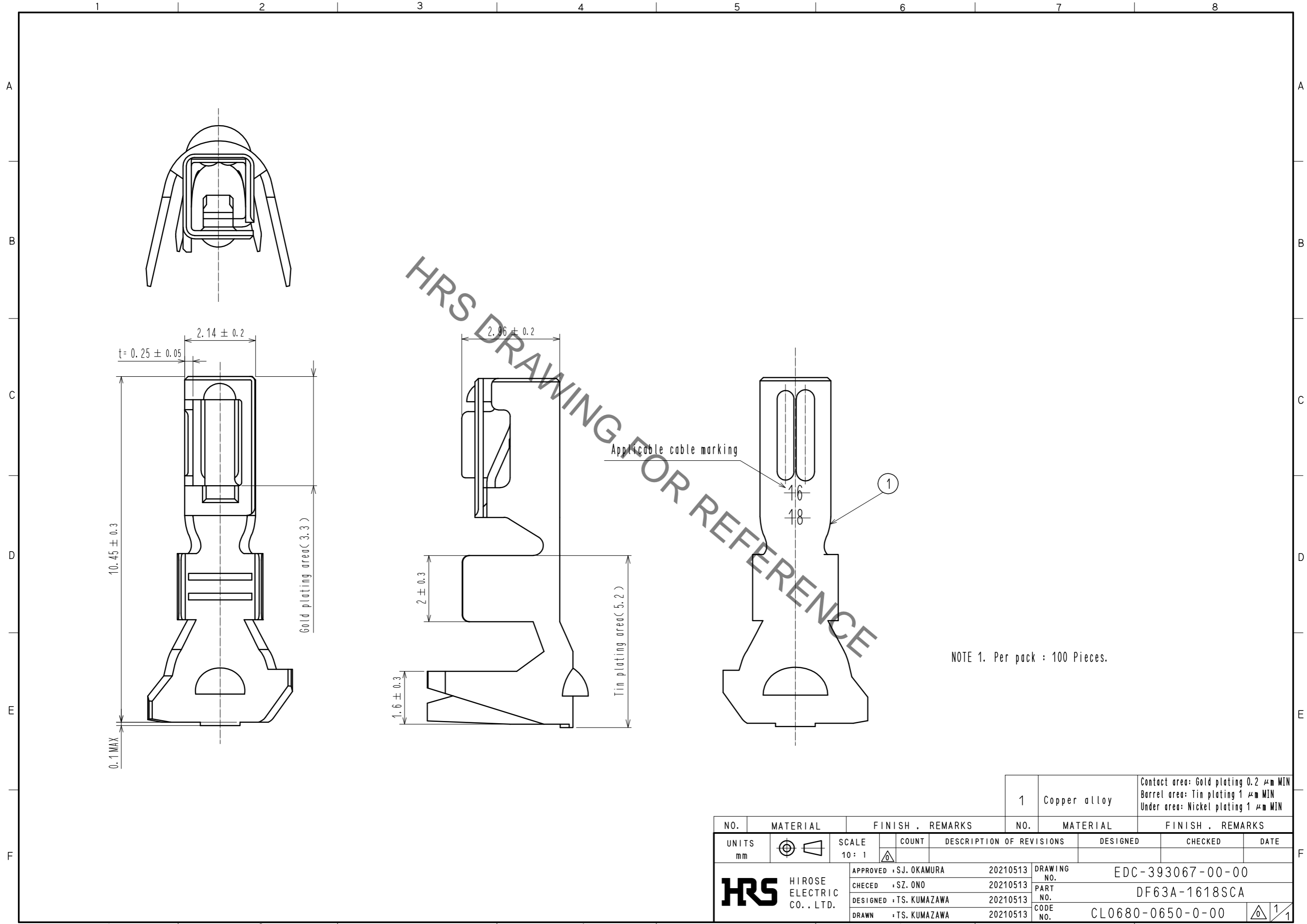


In case of consideration for using Automotive equipment / device which demand high reliability, kindly contact our sales window correspondents.

Sep.1.2021 Copyright 2021 HIROSE ELECTRIC CO., LTD. All Rights Reserved.



HRS DRAWING FOR REFERENCE

NOTE 1. Per pack : 100 Pieces.

NO.		MATERIAL		FINISH . REMARKS		NO.		MATERIAL		FINISH . REMARKS	
		1		Copper alloy						Contact area: Gold plating 0.2 μm MIN Barrel area: Tin plating 1 μm MIN Under area: Nickel plating 1 μm MIN	
UNITS	mm	SCALE	10:1	COUNT	DESCRIPTION OF REVISIONS	DESIGNED	CHECKED	DATE			
<b>HRS</b> HIROSE ELECTRIC CO., LTD.		APPROVED	: SJ. OKAMURA	20210513	DRAWING NO.	EDC-393067-00-00					
		CHECKED	: SZ. ONO	20210513	PART NO.	DF63A-1618SCA					
		DESIGNED	: TS. KUMAZAWA	20210513	CODE NO.	CL0680-0650-0-00					
		DRAWN	: TS. KUMAZAWA	20210513				1/1			