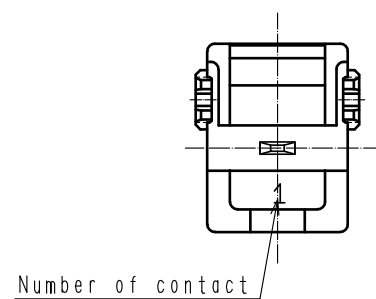
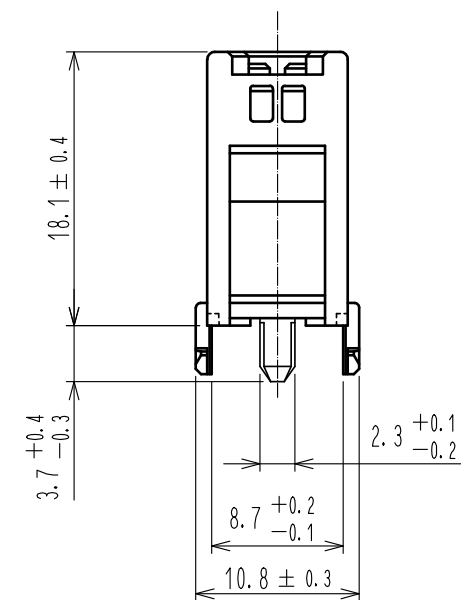
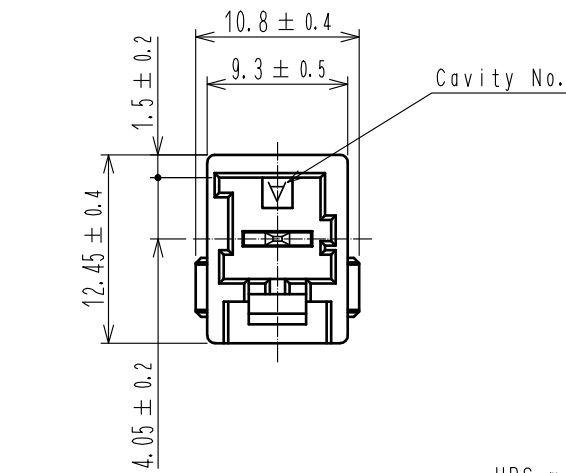
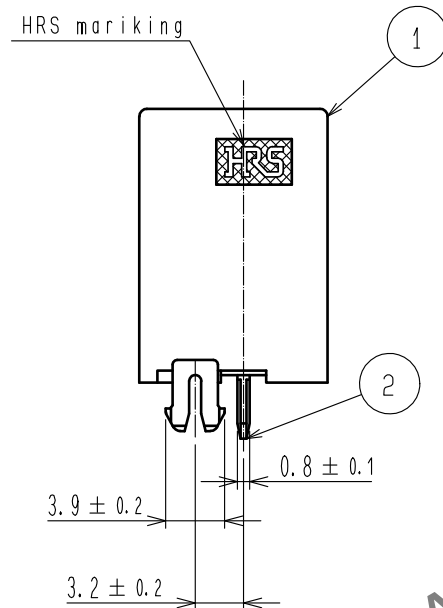


May.1.2024 Copyright 2024 HIROSE ELECTRIC CO., LTD. All Rights Reserved.
In case of consideration for using Automotive equipment / device which demand high reliability, kindly contact our sales window correspondents.



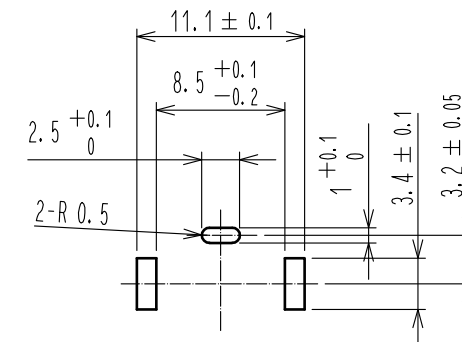
Number of contact



DF22L-1S-7.92C(28)

DF22L-1P-7.92DSA(57)

Recommended PCB layout



Application diagram

DF22BL-1S-7.92C
DF22CL-1S-7.92C
(Drawing=DF22CL)

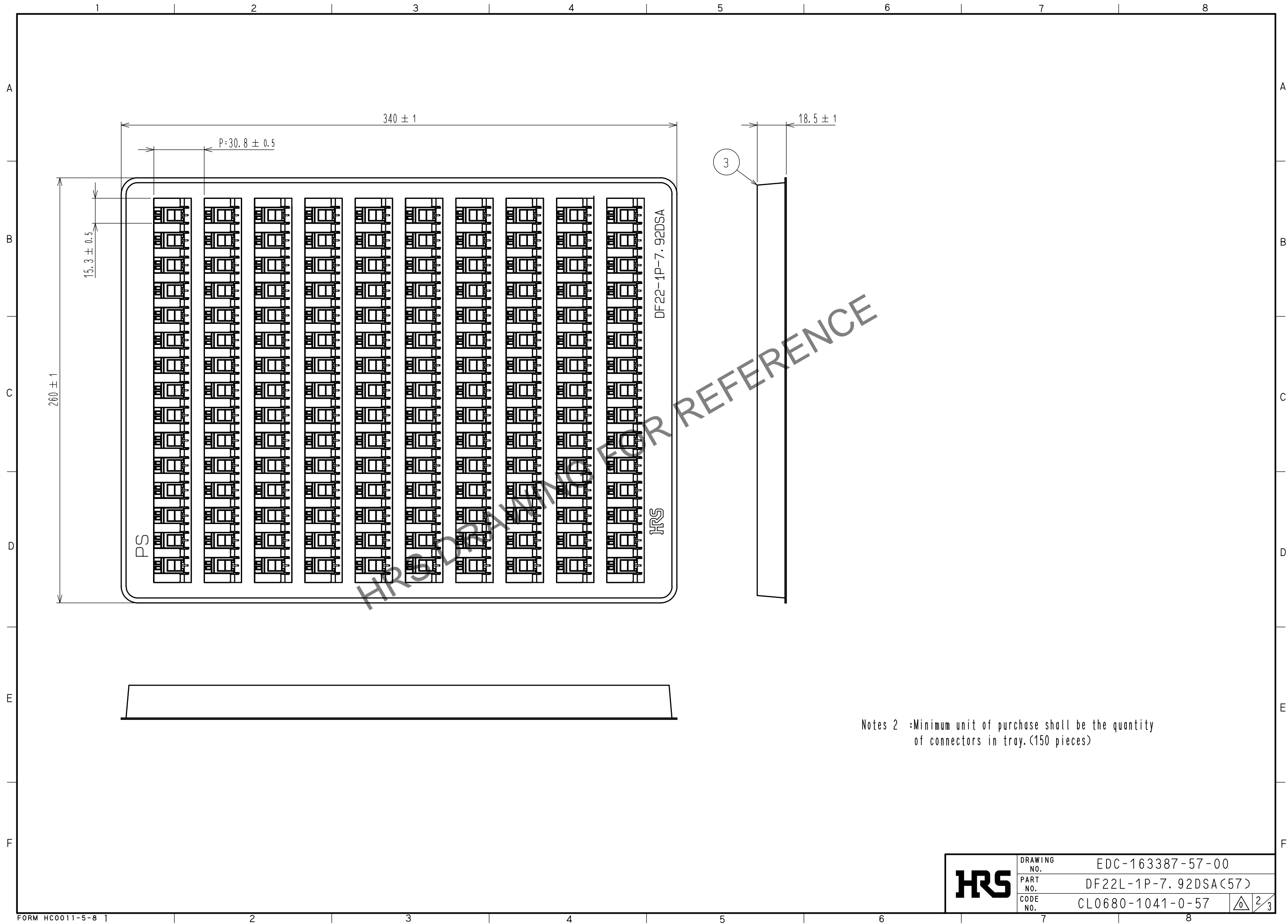
DF22L-1P-7.92DSA(57)


NOTE 1. UL(File No.E52653)
C-UL(File No.E52653)
TÜV(File No.R9950703) authorization article.



1			3		
Polyamide			PS		
Red, UL94V-0			Tray, White		
NO. MATERIAL FINISH , REMARKS			NO. MATERIAL FINISH , REMARKS		
UNITS mm			DESIGNED		
SCALE 2 : 1			CHECKED		
COUNT			DATE		
DESCRIPTION OF REVISIONS			DRAWING NO.		
APPROVED : SJ. OKAMURA 20210202			EDC-163387-57-00		
CHECKED : SZ. ONO 20210202			PART NO.		
DESIGNED : TS. KUMAZAWA 20210202			DF22L-1P-7.92DSA(57)		
DRAWN : TS. KUMAZAWA 20210202			CODE NO.		
			CL0680-1041-0-57		

May.1.2024 Copyright 2024 HIROSE ELECTRIC CO., LTD. All Rights Reserved.
In case of consideration for using Automotive equipment / device which demand high reliability, kindly contact our sales window correspondents.



HRS	DRAWING NO.	EDC-163387-57-00		
	PART NO.	DF22L-1P-7. 92DSA(57)		
	CODE NO.	CL0680-1041-0-57		$\frac{2}{3}$

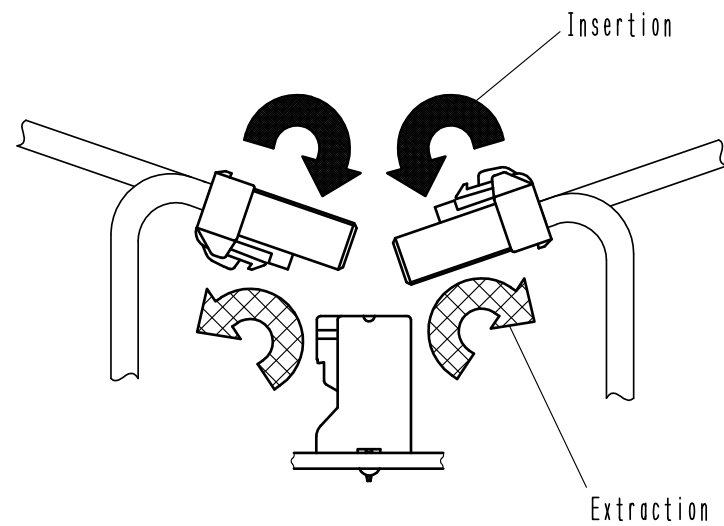
May.1.2024 Copyright 2024 HIROSE ELECTRIC CO., LTD. All Rights Reserved.
In case of consideration for using Automotive equipment / device which demand high reliability, kindly contact our sales window correspondents.

Precautions

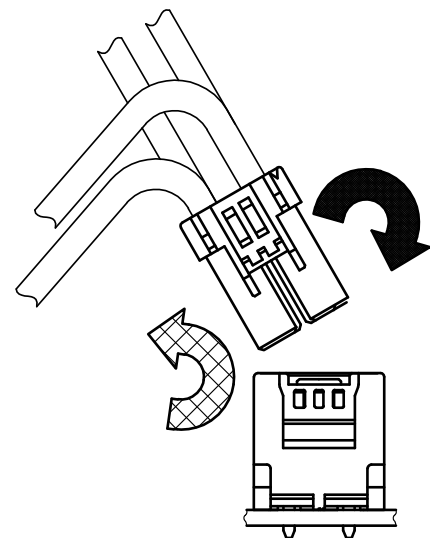
Notification for Insertion/Extraction

- 1) Please insert(extract) the crimping socket straight to the mating connector.
Insertion(extraction) at tilted angles applies load concentration to the connector end and may cause deformation (at connection area, socket and header case, etc). There is firing risk using this kind of deformed connector.

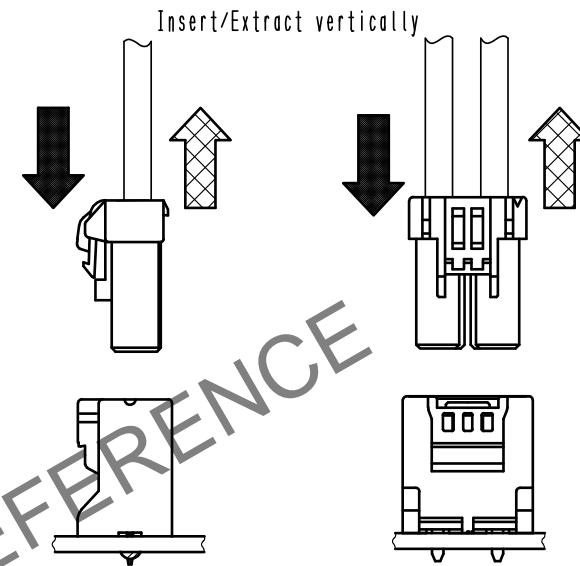
Insertion(Extraction)



NG



NG

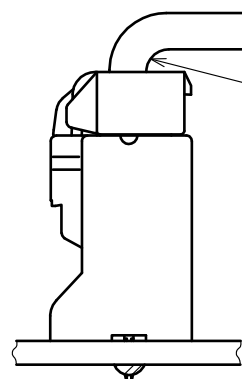


OK

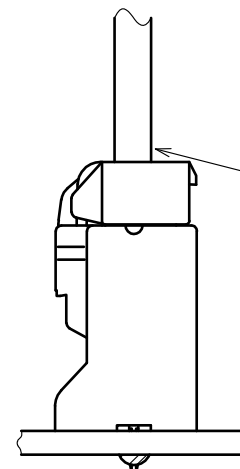
- 2) When it is hard to extract, please lightly insert the connector beforehand and then pull it with releasing the lock.
Forced extraction has a risk of connector breakage.

Notification of wiring

- 1) When using a thick cable, short cable length and bending close to the connector end, these load concentration may cause deformation.
Please note that there is firing risk using deformed connector.
When installing, please refrain from stress concentration such as cable bending close to the connector end or cable twisting.



NG



OK

- 2) Since this product uses thick wires, a larger load is applied to the connector when inserting/extracting or routing the wires.
Please use a retainer to reduce the load on the connector.

HRS

DRAWING NO.	EDC-163387-57-00
PART NO.	DF22L-1P-7. 92DSA(57)
CODE NO.	CL0680-1041-0-57

3/3