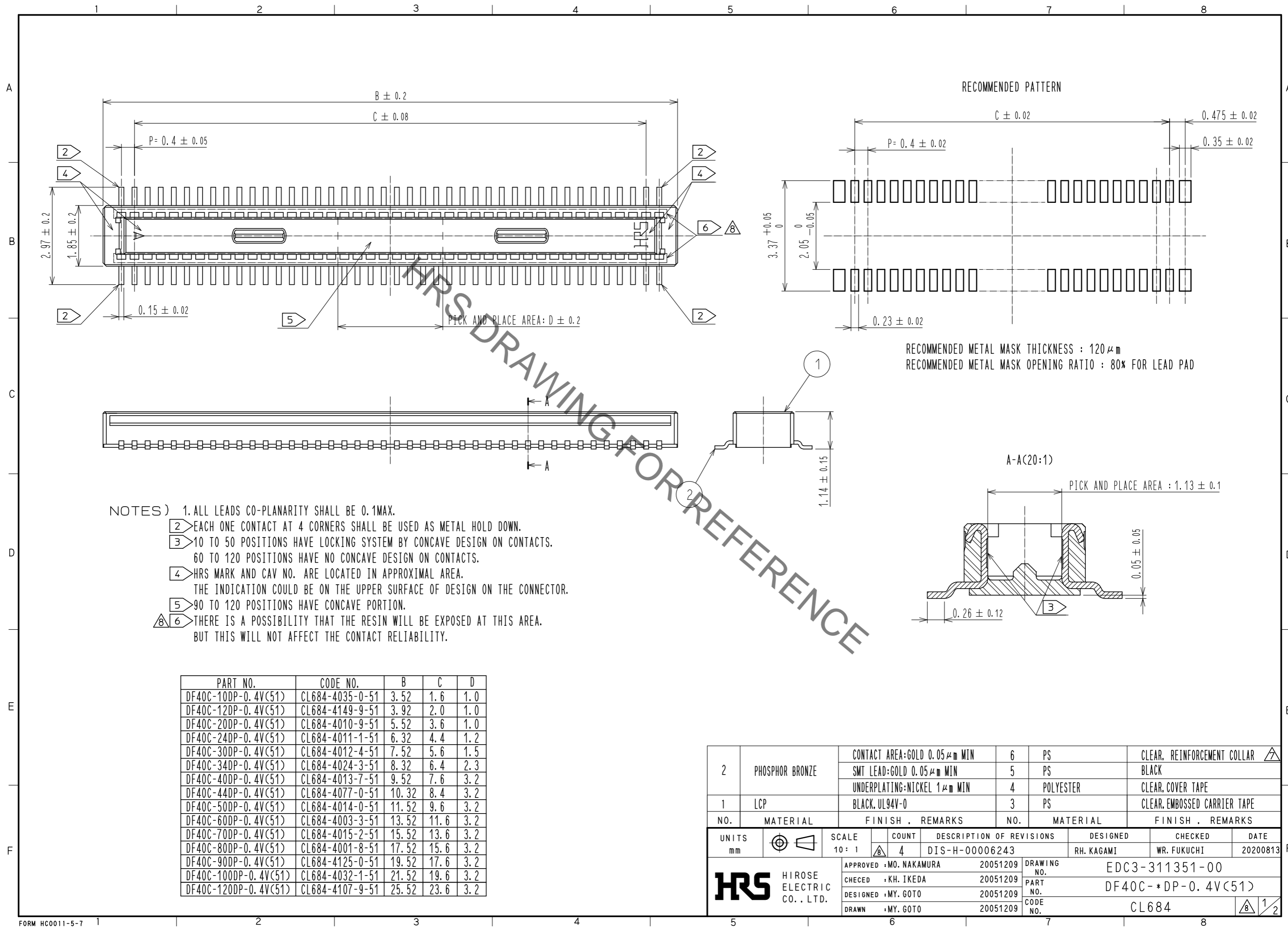


Nov.1.2021 Copyright 2021 HIROSE ELECTRIC CO., LTD. All Rights Reserved.
In case of consideration for using Automotive equipment / device which demand high reliability, kindly contact our sales window correspondents.



- NOTES)
- 1. ALL LEADS CO-PLANARITY SHALL BE 0.1MAX.
 - 2. EACH ONE CONTACT AT 4 CORNERS SHALL BE USED AS METAL HOLD DOWN.
 - 3. 10 TO 50 POSITIONS HAVE LOCKING SYSTEM BY CONCAVE DESIGN ON CONTACTS.
60 TO 120 POSITIONS HAVE NO CONCAVE DESIGN ON CONTACTS.
 - 4. HRS MARK AND CAV NO. ARE LOCATED IN APPROXIMAL AREA.
THE INDICATION COULD BE ON THE UPPER SURFACE OF DESIGN ON THE CONNECTOR.
 - 5. 90 TO 120 POSITIONS HAVE CONCAVE PORTION.
 - 6. THERE IS A POSSIBILITY THAT THE RESIN WILL BE EXPOSED AT THIS AREA.
BUT THIS WILL NOT AFFECT THE CONTACT RELIABILITY.

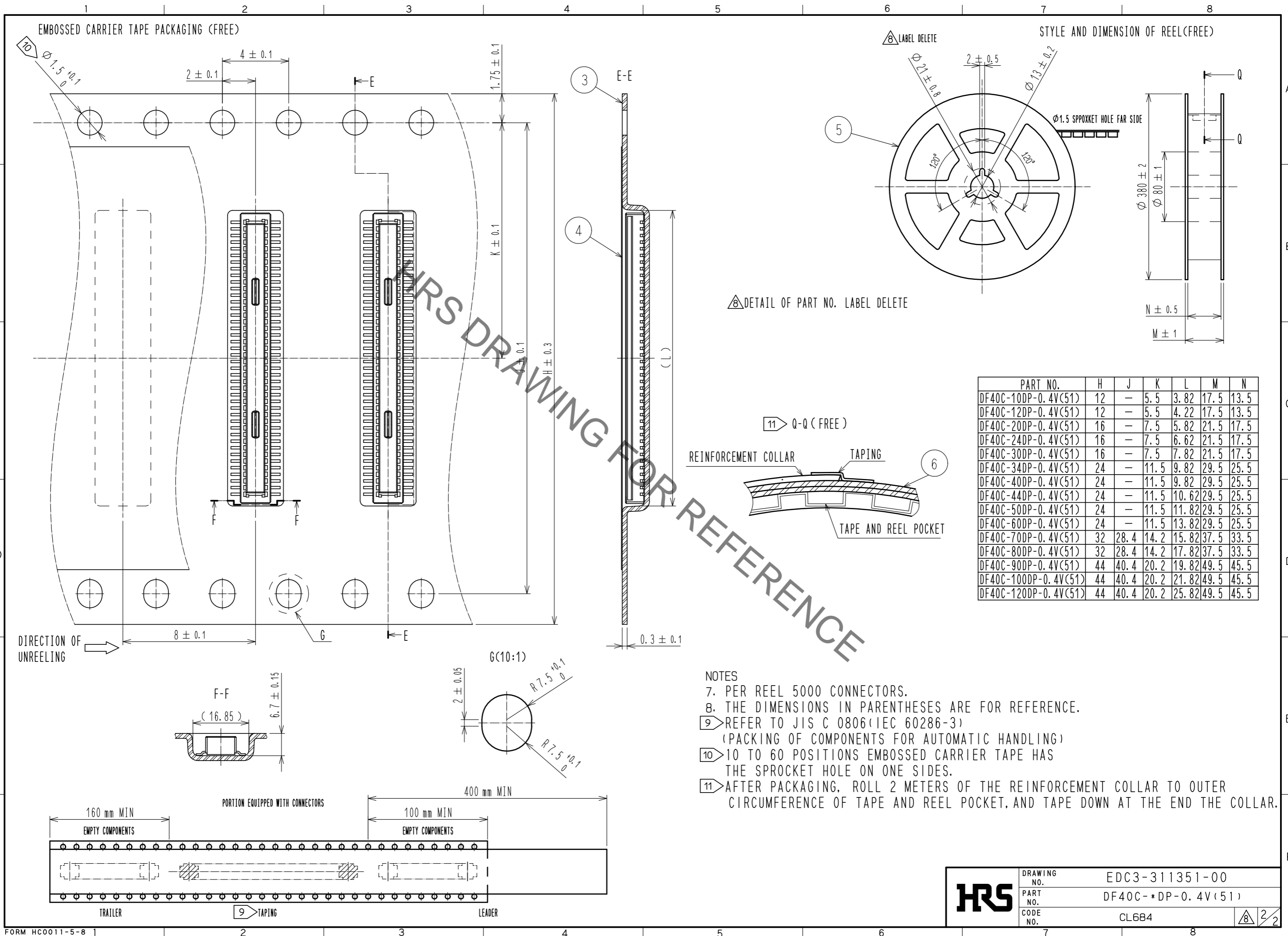
| PART NO. | CODE NO. | B | C | D |
|----------------------|-----------------|-------|------|-----|
| DF40C-10DP-0.4V(51) | CL684-4035-0-51 | 3.52 | 1.6 | 1.0 |
| DF40C-12DP-0.4V(51) | CL684-4149-9-51 | 3.92 | 2.0 | 1.0 |
| DF40C-20DP-0.4V(51) | CL684-4010-9-51 | 5.52 | 3.6 | 1.0 |
| DF40C-24DP-0.4V(51) | CL684-4011-1-51 | 6.32 | 4.4 | 1.2 |
| DF40C-30DP-0.4V(51) | CL684-4012-4-51 | 7.52 | 5.6 | 1.5 |
| DF40C-34DP-0.4V(51) | CL684-4024-3-51 | 8.32 | 6.4 | 2.3 |
| DF40C-40DP-0.4V(51) | CL684-4013-7-51 | 9.52 | 7.6 | 3.2 |
| DF40C-44DP-0.4V(51) | CL684-4077-0-51 | 10.32 | 8.4 | 3.2 |
| DF40C-50DP-0.4V(51) | CL684-4014-0-51 | 11.52 | 9.6 | 3.2 |
| DF40C-60DP-0.4V(51) | CL684-4003-3-51 | 13.52 | 11.6 | 3.2 |
| DF40C-70DP-0.4V(51) | CL684-4015-2-51 | 15.52 | 13.6 | 3.2 |
| DF40C-80DP-0.4V(51) | CL684-4001-8-51 | 17.52 | 15.6 | 3.2 |
| DF40C-90DP-0.4V(51) | CL684-4125-0-51 | 19.52 | 17.6 | 3.2 |
| DF40C-100DP-0.4V(51) | CL684-4032-1-51 | 21.52 | 19.6 | 3.2 |
| DF40C-120DP-0.4V(51) | CL684-4107-9-51 | 25.52 | 23.6 | 3.2 |

| NO. | MATERIAL | FINISH | REMARKS | NO. | MATERIAL | FINISH | REMARKS |
|-----|-----------------|-------------------------------|---------|-----------|----------|----------------------|-----------------------|
| 2 | PHOSPHOR BRONZE | CONTACT AREA:GOLD 0.05 μm MIN | 6 | PS | CLEAR. | REINFORCEMENT COLLAR | △ |
| | | SMT LEAD:GOLD 0.05 μm MIN | 5 | PS | BLACK | | |
| | | UNDERPLATING:NICKEL 1 μm MIN | 4 | POLYESTER | CLEAR. | COVER TAPE | |
| 1 | LCP | BLACK. | UL94V-0 | 3 | PS | CLEAR. | EMBOSSED CARRIER TAPE |

| UNITS | SCALE | COUNT | DESCRIPTION OF REVISIONS | DESIGNED | CHECKED | DATE |
|-------|-------|-------|--------------------------|------------|-------------|----------|
| mm | 10:1 | 4 | DIS-H-00006243 | RH. KAGAMI | WR. FUKUCHI | 20200813 |

| APPROVED | CHECKED | DESIGNED | DRAWN | DATE | DRAWING NO. | PART NO. | CODE NO. |
|--------------|-----------|----------|----------|----------|----------------|--------------------|----------|
| MO. NAKAMURA | KH. IKEDA | MY. GOTO | MY. GOTO | 20051209 | EDC3-311351-00 | DF40C-*DP-0.4V(51) | CL684 |

Nov.1.2021 Copyright 2021 HIROSE ELECTRIC CO., LTD. All Rights Reserved.
In case of consideration for using Automotive equipment / device which demand high reliability, kindly contact our sales window correspondents.



| PART NO. | H | J | K | L | M | N |
|----------------------|----|------|------|-------|------|------|
| DF40C-10DP-0.4V(51) | 12 | - | 5.5 | 3.82 | 17.5 | 13.5 |
| DF40C-12DP-0.4V(51) | 12 | - | 5.5 | 4.22 | 17.5 | 13.5 |
| DF40C-20DP-0.4V(51) | 16 | - | 7.5 | 5.82 | 21.5 | 17.5 |
| DF40C-24DP-0.4V(51) | 16 | - | 7.5 | 6.62 | 21.5 | 17.5 |
| DF40C-30DP-0.4V(51) | 16 | - | 7.5 | 7.82 | 21.5 | 17.5 |
| DF40C-34DP-0.4V(51) | 24 | - | 11.5 | 9.82 | 29.5 | 25.5 |
| DF40C-40DP-0.4V(51) | 24 | - | 11.5 | 9.82 | 29.5 | 25.5 |
| DF40C-44DP-0.4V(51) | 24 | - | 11.5 | 10.62 | 29.5 | 25.5 |
| DF40C-50DP-0.4V(51) | 24 | - | 11.5 | 11.82 | 29.5 | 25.5 |
| DF40C-60DP-0.4V(51) | 24 | - | 11.5 | 13.82 | 29.5 | 25.5 |
| DF40C-70DP-0.4V(51) | 32 | 28.4 | 14.2 | 15.82 | 37.5 | 33.5 |
| DF40C-80DP-0.4V(51) | 32 | 28.4 | 14.2 | 17.82 | 37.5 | 33.5 |
| DF40C-90DP-0.4V(51) | 44 | 40.4 | 20.2 | 19.82 | 49.5 | 45.5 |
| DF40C-100DP-0.4V(51) | 44 | 40.4 | 20.2 | 21.82 | 49.5 | 45.5 |
| DF40C-120DP-0.4V(51) | 44 | 40.4 | 20.2 | 25.82 | 49.5 | 45.5 |

- NOTES
- 7. PER REEL 5000 CONNECTORS.
 - 8. THE DIMENSIONS IN PARENTHESES ARE FOR REFERENCE.
 - 9. REFER TO JIS C 0806 (IEC 60286-3)
(PACKING OF COMPONENTS FOR AUTOMATIC HANDLING)
 - 10. 10 TO 60 POSITIONS EMBOSSED CARRIER TAPE HAS THE SPROCKET HOLE ON ONE SIDES.
 - 11. AFTER PACKAGING, ROLL 2 METERS OF THE REINFORCEMENT COLLAR TO OUTER CIRCUMFERENCE OF TAPE AND REEL POCKET, AND TAPE DOWN AT THE END THE COLLAR.

| | | |
|------------|-------------|--------------------|
| HRS | DRAWING NO. | EDC3-311351-00 |
| | PART NO. | DF40C-*DP-0.4V(51) |
| | CODE NO. | CL684 |
| | | 2/2 |