

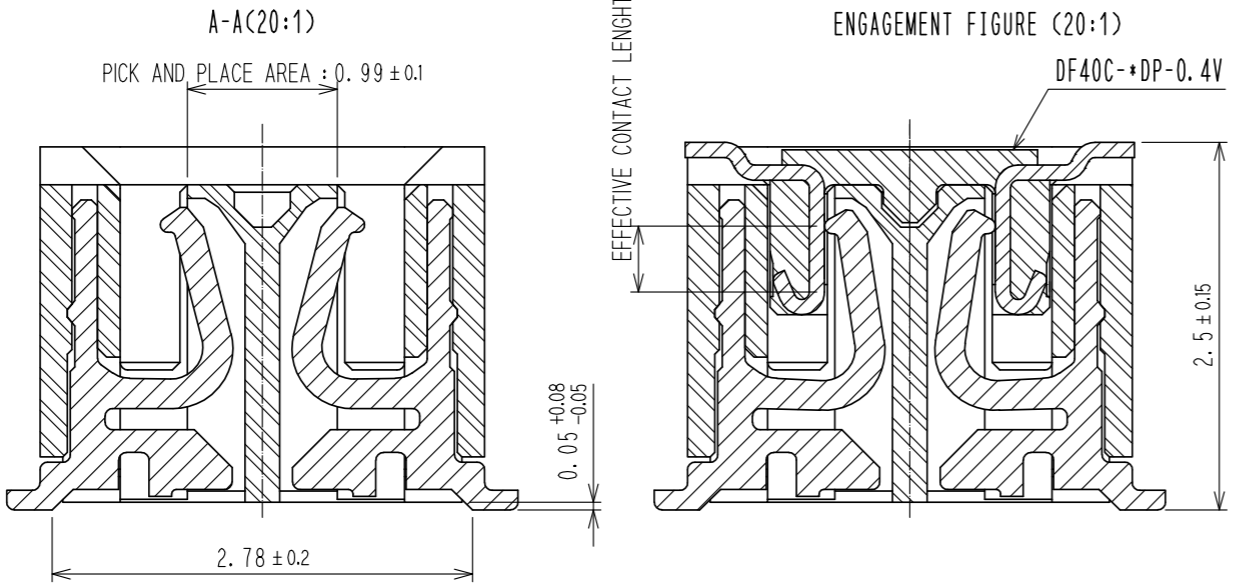
HRS DRAWING FOR REFERENCE

RECOMMENDED PATTERN

RECOMMENDED METAL MASK THICKNESS : 120 μm
 RECOMMENDED METAL MASK OPENING RATIO : 80% FOR LEAD PAD

| 製品名 | 製品コード | B | C | D |
|---------------------------|-----------------|------|------|-----|
| DF40C(2.5)-10DS-0.4V(51) | — | 4.6 | 1.6 | 1.0 |
| DF40C(2.5)-20DS-0.4V(51) | CL684-4101-2-51 | 6.6 | 3.6 | 1.0 |
| DF40C(2.5)-24DS-0.4V(51) | — | 7.4 | 4.4 | 1.2 |
| DF40C(2.5)-30DS-0.4V(51) | — | 8.6 | 5.6 | 1.5 |
| DF40C(2.5)-40DS-0.4V(51) | CL684-4112-9-51 | 10.6 | 7.6 | 3.2 |
| DF40C(2.5)-50DS-0.4V(51) | CL684-4126-3-51 | 12.6 | 9.6 | 3.2 |
| DF40C(2.5)-60DS-0.4V(51) | CL684-4085-8-51 | 14.6 | 11.6 | 3.2 |
| DF40C(2.5)-70DS-0.4V(51) | — | 16.6 | 13.6 | 3.2 |
| DF40C(2.5)-80DS-0.4V(51) | — | 18.6 | 15.6 | 3.2 |
| DF40C(2.5)-90DS-0.4V(51) | — | 20.6 | 17.6 | 3.2 |
| DF40C(2.5)-100DS-0.4V(51) | — | 22.6 | 19.6 | 3.2 |

- NOTES
- ALL LEADS CO-PLANARITY SHALL BE 0.1 mm MAX.
 - IS NO PATTERN AREA OTHER THAN THE SAME CIRCUIT.
 - HRS MARK AND CAV NO. IS INDICATED IN APPROXIMAL POSITION SHOWN.
 - GATE POSITION OF 60 TO 100 POSITIONS IS POSITIONED IN APPROXIMAL AREA SHOWN.
 - GATE POSITION OF 10 TO 50 POSITIONS IS POSITIONED IN APPROXIMAL AREA SHOWN. A PART OF THE WALL COULD BE NOTCHED FOR SETTING GATE.
 - 60 TO 100 POSITIONS HAVE CONCAVE PORTION.



| NO. | MATERIAL | FINISH | REMARKS | NO. | MATERIAL | FINISH | REMARKS |
|-----|-----------------|--|---------|-----|-----------|------------------------------|---------|
| 2 | PHOSPHOR BRONZE | CONTACT AREA:GOLD 0.05 μm MIN SMT LEAD:GOLD 0.05 μm MIN UNDERPLATING:NICKEL 1 μm MIN | | 5 | PS | BLACK | |
| 1 | LCP | BLACK, UL94V-0 | | 4 | POLYESTER | CLEAR, COVER TAPE | |
| | | | | 3 | PS | CLEAR, EMBOSSED CARRIER TAPE | |

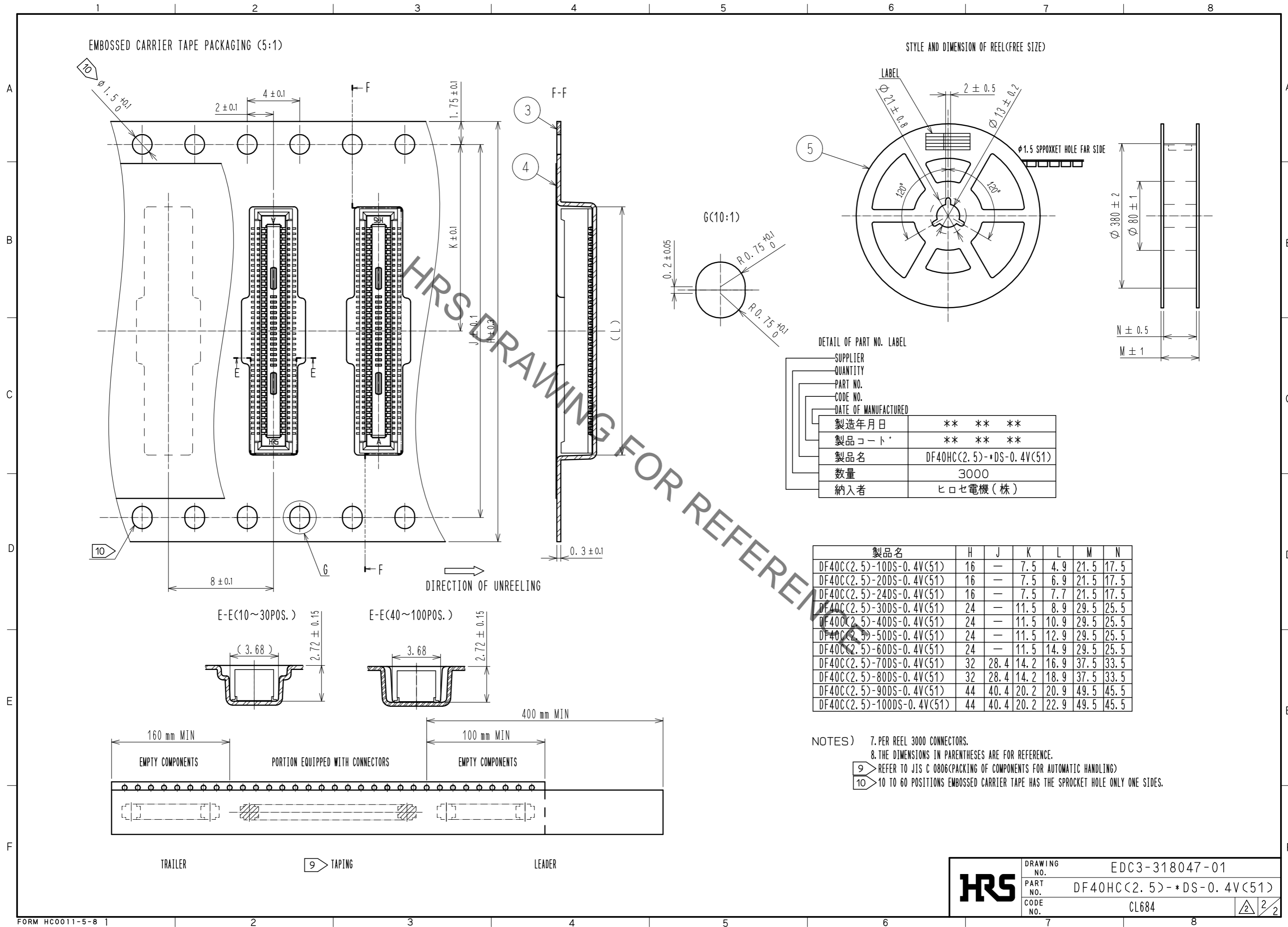
| UNITS | SCALE | COUNT | DESCRIPTION OF REVISIONS | DESIGNED | CHECKED | DATE |
|-------|-------|-------|--------------------------|------------|------------|----------|
| mm | 10:1 | 1 | DIS-H-00007018 | RH. KAGAMI | YK. SATAKE | 20201211 |

| APPROVED | CHECKED | DESIGNED | DRAWN | DRAWING NO. | PART NO. | CODE NO. |
|-----------|--------------|---------------|------------|----------------|--------------------------|----------|
| KH. IKEDA | TS. MIYAZAKI | AR. TAKAHASHI | AK. AOYAGI | EDC3-318047-01 | DF40HC(2.5)-*DS-0.4V(51) | CL684 |

Dec.1.2021 Copyright 2021 HIROSE ELECTRIC CO., LTD. All Rights Reserved.
 In case of consideration for using Automotive equipment / device which demand high reliability, kindly contact our sales window correspondents.

EMBOSSED CARRIER TAPE PACKAGING (5:1)

STYLE AND DIMENSION OF REEL(FREE SIZE)



DETAIL OF PART NO. LABEL

| | |
|----------------------|--------------------------|
| SUPPLIER | |
| QUANTITY | |
| PART NO. | |
| CODE NO. | |
| DATE OF MANUFACTURED | |
| 製造年月日 | ** ** * |
| 製品コード | ** ** * |
| 製品名 | DF40HC(2.5)-*DS-0.4V(51) |
| 数量 | 3000 |
| 納入者 | ヒロセ電機(株) |

| 製品名 | H | J | K | L | M | N |
|---------------------------|----|------|------|------|------|------|
| DF40C(2.5)-10DS-0.4V(51) | 16 | — | 7.5 | 4.9 | 21.5 | 17.5 |
| DF40C(2.5)-20DS-0.4V(51) | 16 | — | 7.5 | 6.9 | 21.5 | 17.5 |
| DF40C(2.5)-24DS-0.4V(51) | 16 | — | 7.5 | 7.7 | 21.5 | 17.5 |
| DF40C(2.5)-30DS-0.4V(51) | 24 | — | 11.5 | 8.9 | 29.5 | 25.5 |
| DF40C(2.5)-40DS-0.4V(51) | 24 | — | 11.5 | 10.9 | 29.5 | 25.5 |
| DF40C(2.5)-50DS-0.4V(51) | 24 | — | 11.5 | 12.9 | 29.5 | 25.5 |
| DF40C(2.5)-60DS-0.4V(51) | 24 | — | 11.5 | 14.9 | 29.5 | 25.5 |
| DF40C(2.5)-70DS-0.4V(51) | 32 | 28.4 | 14.2 | 16.9 | 37.5 | 33.5 |
| DF40C(2.5)-80DS-0.4V(51) | 32 | 28.4 | 14.2 | 18.9 | 37.5 | 33.5 |
| DF40C(2.5)-90DS-0.4V(51) | 44 | 40.4 | 20.2 | 20.9 | 49.5 | 45.5 |
| DF40C(2.5)-100DS-0.4V(51) | 44 | 40.4 | 20.2 | 22.9 | 49.5 | 45.5 |

- NOTES)
7. PER REEL 3000 CONNECTORS.
 8. THE DIMENSIONS IN PARENTHESES ARE FOR REFERENCE.
 - 9 REFER TO JIS C 0806(PACKING OF COMPONENTS FOR AUTOMATIC HANDLING)
 - 10 10 TO 60 POSITIONS EMBOSSED CARRIER TAPE HAS THE SPROCKET HOLE ONLY ONE SIDES.

| | | |
|------------|-------------|--------------------------|
| HRS | DRAWING NO. | EDC3-318047-01 |
| | PART NO. | DF40HC(2.5)-*DS-0.4V(51) |
| | CODE NO. | CL684 |
| | | $\frac{2}{2}$ |