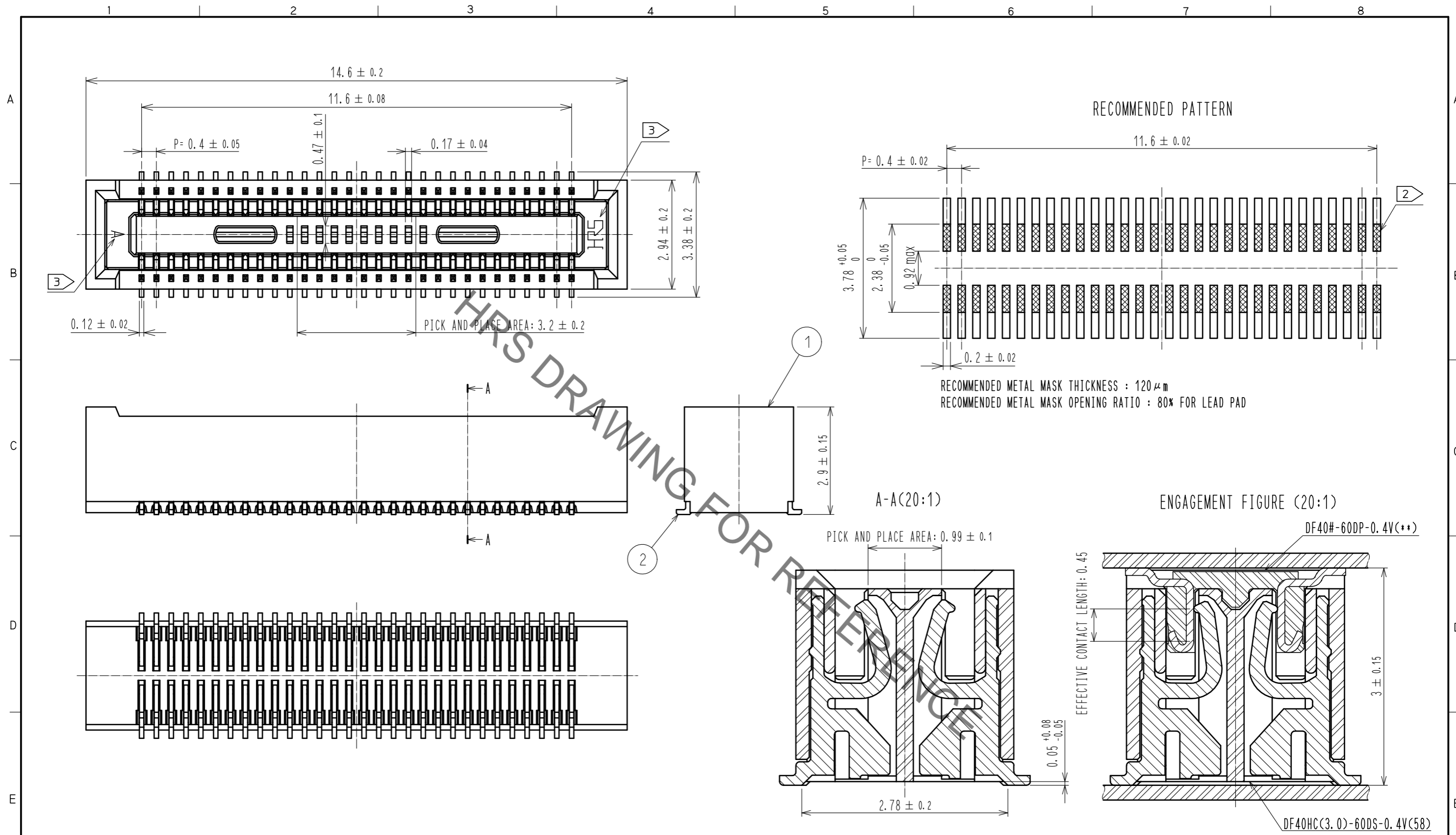


May.1.2022 Copyright 2022 HIROSE ELECTRIC CO., LTD. All Rights Reserved.
In case of consideration for using Automotive equipment / device which demand high reliability, kindly contact our sales window correspondents.

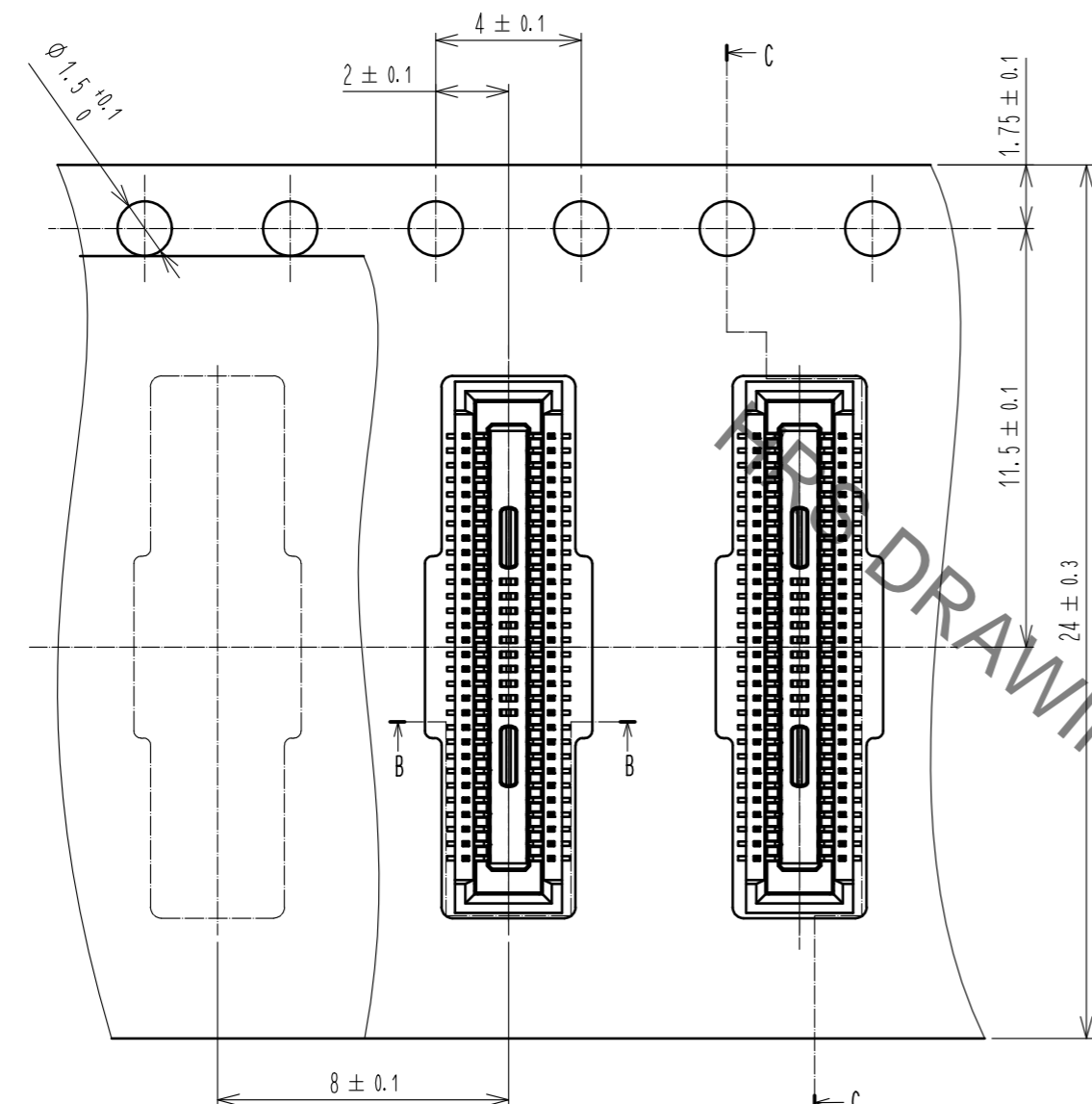


- NOTES
- ALL LEADS CO-PLANARITY SHALL BE 0.1mm MAX.
 - IS NO PATTERN AREA OTHER THAN THE SAME CIRCUIT.
 - HRS MARK AND CAV NO. IS INDICATED IN APPROXI POSITION SHOWN.

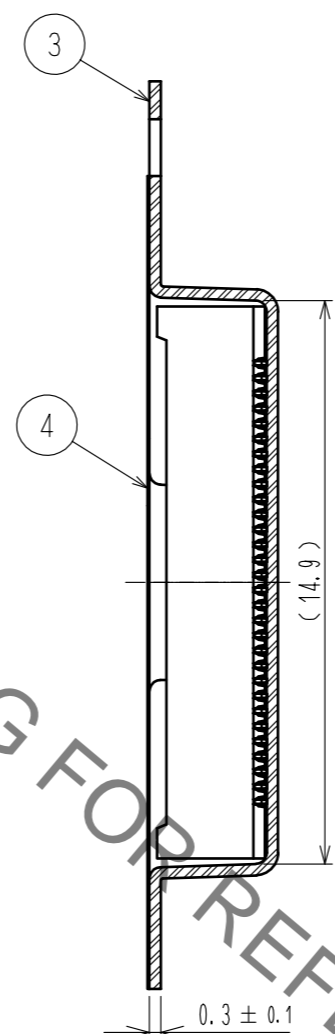
2	PHOSPHOR BRONZE	CONTACT AREA: GOLD $0.05 \mu\text{m}$ MIN	6	PS	CLEAR (REINFORCEMENT COLLAR)			
		SMT LEAD : GOLD $0.05 \mu\text{m}$ MIN	5	PS	BLACK (PLASTIC REEL)			
1	LCP	UNDERPLATING: NICKEL $1 \mu\text{m}$ MIN	4	POLYESTER	CLEAR (COVER TAPE)			
		BLACK, UL94V-0	3	PS	CLEAR (EMBOSSED CARRIER TAPE)			
NO.	MATERIAL	FINISH . REMARKS	NO.	MATERIAL	FINISH . REMARKS			
UNITS		SCALE	COUNT	DESCRIPTION OF REVISIONS		DESIGNED	CHECKED	DATE
mm		10 : 1						
HRS HIROSE ELECTRIC CO., LTD.		APPROVED : WR. FUKUCHI	20201211	DRAWING NO. EDC-317293-58-00				
		CHECKED : TS. MIYAZAKI	20201210	PART NO. DF40HC(3.0)-60DS-0.4V(58)				
		DESIGNED : RH. KITAGAWA	20201210	CODE NO. CL0684-4100-0-58				
		DRAWN : YK. MITSUISHI	20201209					

May.1.2022 Copyright 2022 HIROSE ELECTRIC CO., LTD. All Rights Reserved.
In case of consideration for using Automotive equipment / device which demand high reliability, kindly contact our sales window correspondents.

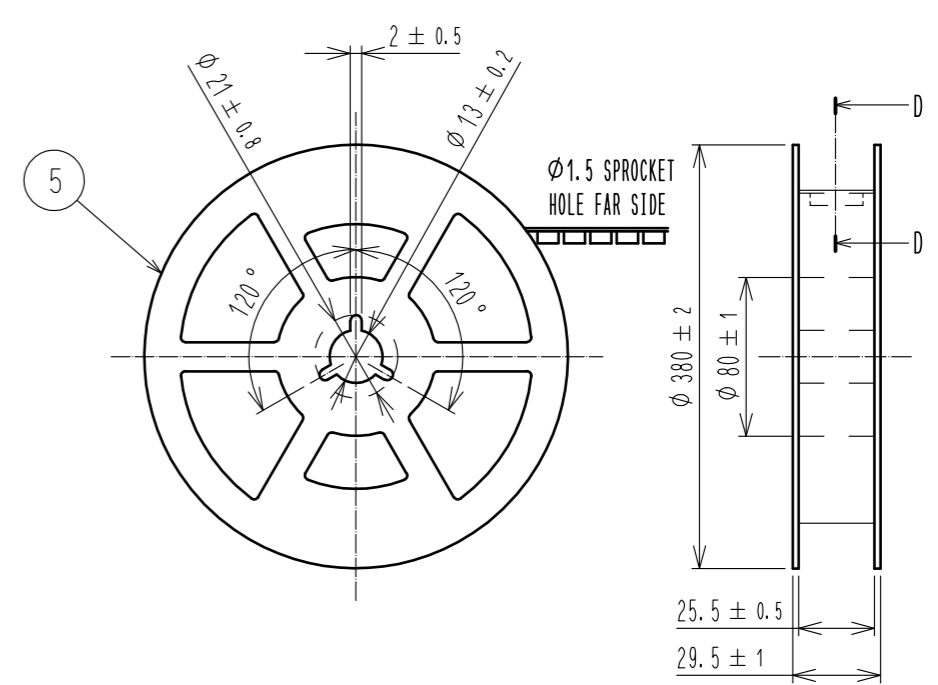
EMBOSSED CARRIER TAPE PACKAGING (5:1)



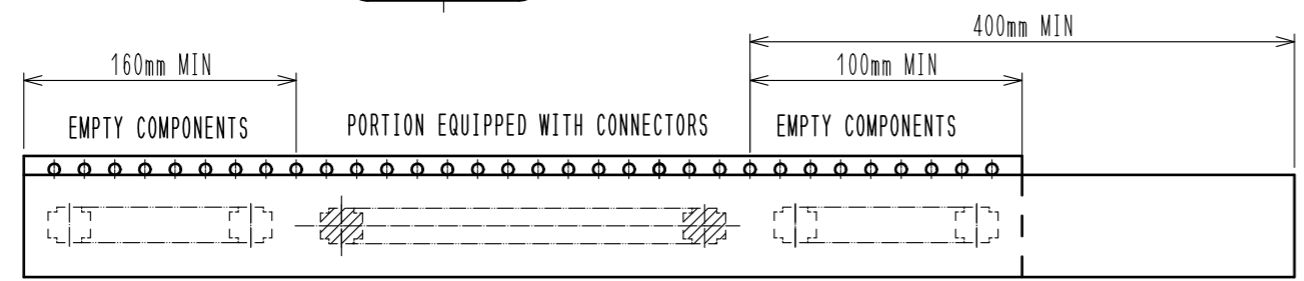
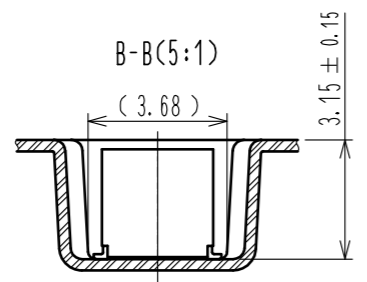
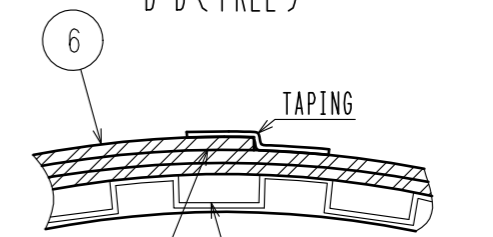
C-C(5:1)



STYLE AND DIMENSION OF REEL (FREE SIZE)



D-D (FREE)



- NOTES
- 4. PER REEL 1000 CONNECTORS.
 - 5. THE DIMENSIONS IN PARENTHESSES ARE FOR REFERENCE.
 - 6 REFER TO JIS C 0806. IEC 60286-3. (PACKAGING OF COMPONENTS FOR AUTOMATIC HANDLING)
 - 7 AFTER PACKAGING, ROLL 2 METERS OF THE REINFORCEMENT COLLAR TO OUTER CIRCUMFERENCE OF TAPE AND REEL POCKET, AND TAPE DOWN AT THE END OF THE COLLAR.

HRS	DRAWING NO.	EDC-317293-58-00
	PART NO.	DF40HC(3.0)-60DS-0.4V(58)
	CODE NO.	CL0684-4100-0-58
		\triangle 2/2