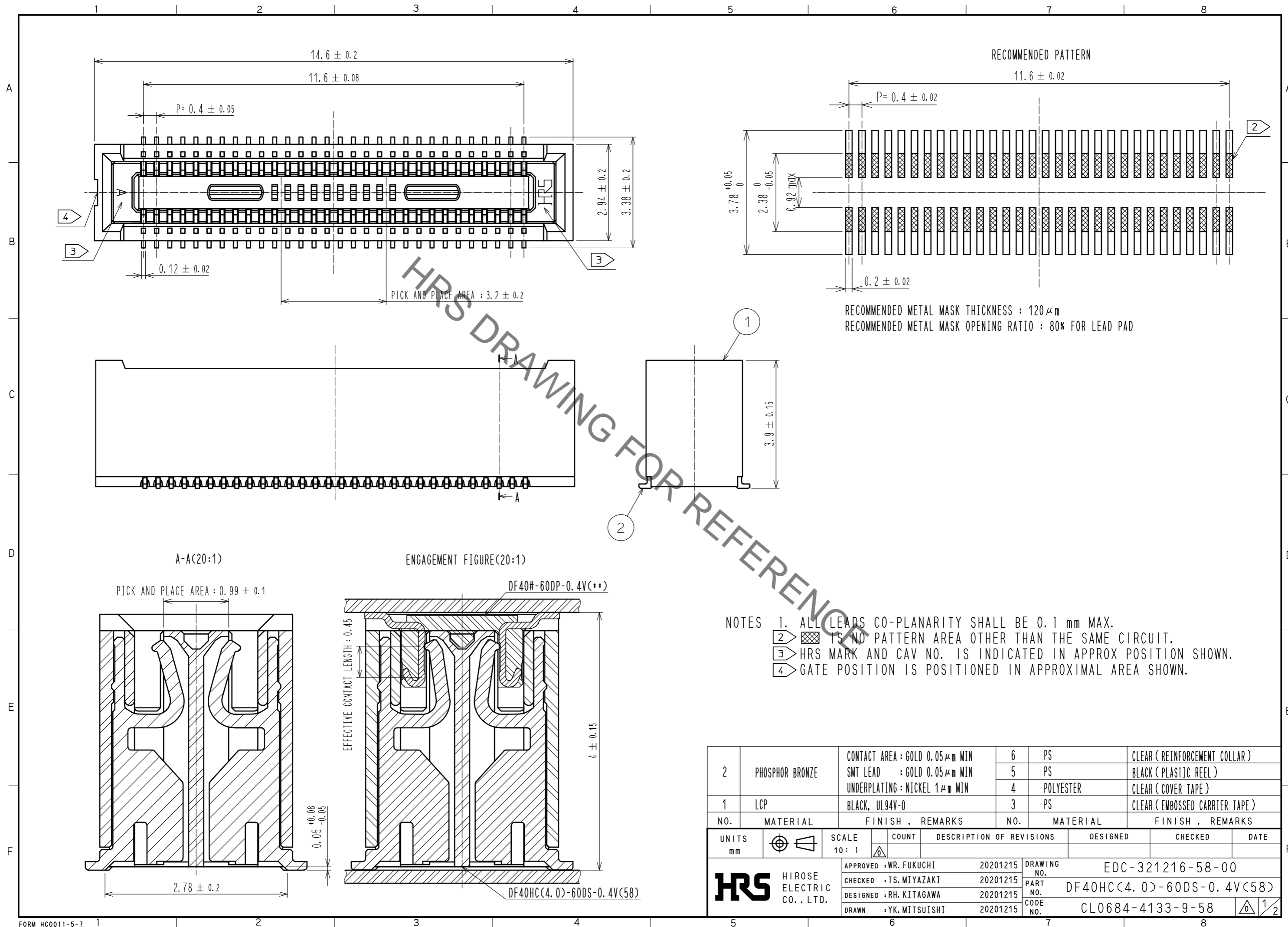


Jun.1.2022 Copyright 2022 HIROSE ELECTRIC CO., LTD. All Rights Reserved.
In case of consideration for using Automotive equipment / device which demand high reliability, kindly contact our sales window correspondents.



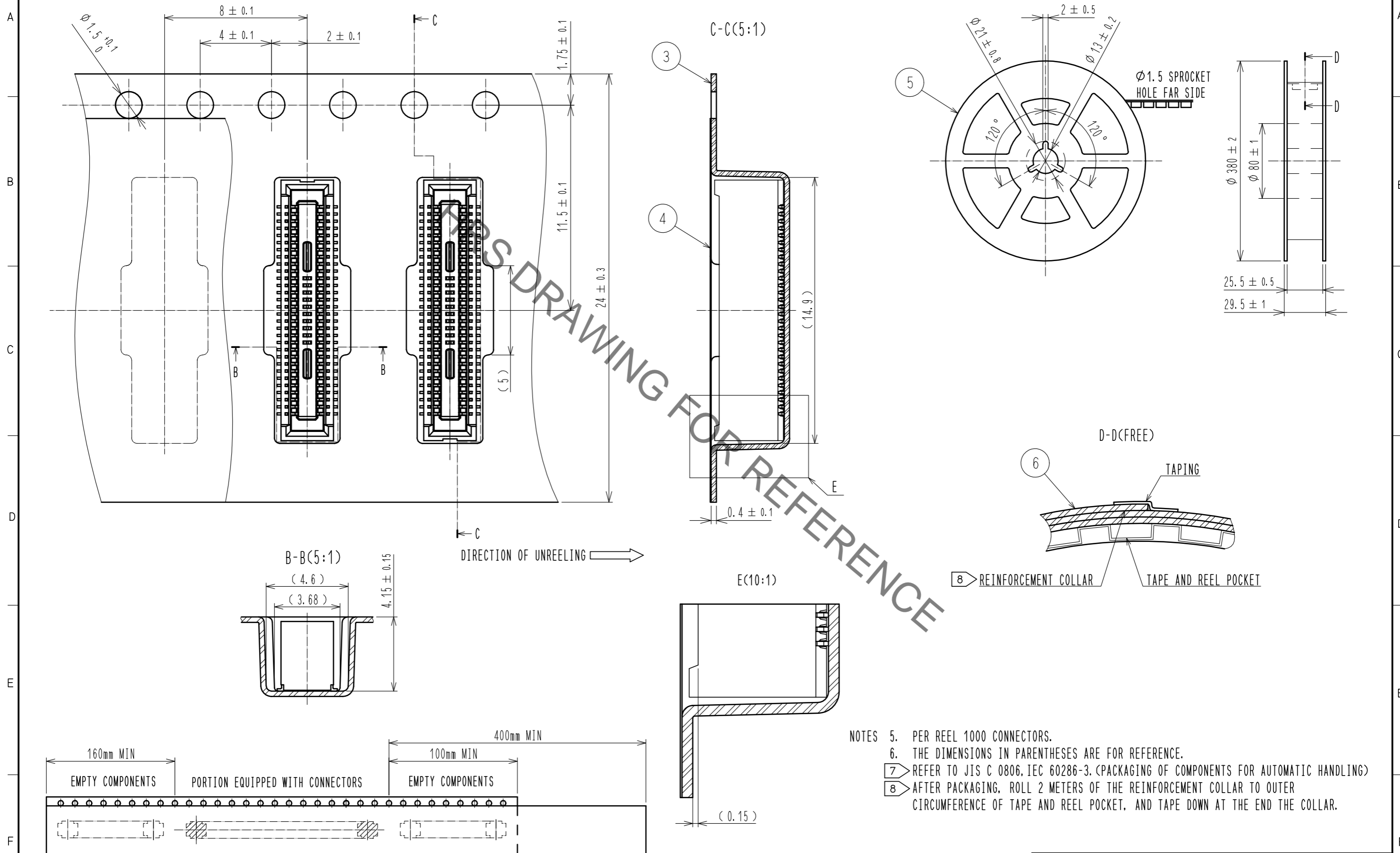
| NO. | MATERIAL | FINISH . | REMARKS | NO. | MATERIAL | FINISH . | REMARKS |
|-----|-----------------|--|---------|-----|-----------|----------|-------------------------------|
| 2 | PHOSPHOR BRONZE | CONTACT AREA : GOLD 0.05 μm MIN SMT LEAD : GOLD 0.05 μm MIN UNDERPLATING : NICKEL 1 μm MIN | | 6 | PS | | CLEAR (REINFORCEMENT COLLAR) |
| | | | | 5 | PS | | BLACK (PLASTIC REEL) |
| | | | | 4 | POLYESTER | | CLEAR (COVER TAPE) |
| 1 | LCP | BLACK, UL94V-0 | | 3 | PS | | CLEAR (EMBOSSED CARRIER TAPE) |

| UNITS | SCALE | COUNT | DESCRIPTION OF REVISIONS | DESIGNED | CHECKED | DATE |
|-------------------------|-------|-------|--------------------------|------------------------------------|---------|------|
| mm | 10:1 | △ | | | | |
| APPROVED : WR. FUKUCHI | | | 20201215 | DRAWING NO. EDC-321216-58-00 | | |
| CHECKED : TS. MIYAZAKI | | | 20201215 | PART NO. DF40HC(4.0)-60DS-0.4V(58) | | |
| DESIGNED : RH. KITAGAWA | | | 20201215 | CODE NO. CL0684-4133-9-58 | | |
| DRAWN : YK. MITSUISHI | | | 20201215 | 1/2 | | |

Jun.1.2022 Copyright 2022 HIROSE ELECTRIC CO., LTD. All Rights Reserved.
 In case of consideration for using Automotive equipment / device which demand high reliability, kindly contact our sales window correspondents.

EMBOSED CARRIER TAPE PACKAGING (5:1)

STYLE AND DIMENSION OF REEL (FREE)



- NOTES
5. PER REEL 1000 CONNECTORS.
 6. THE DIMENSIONS IN PARENTHESES ARE FOR REFERENCE.
 7. REFER TO JIS C 0806, IEC 60286-3. (PACKAGING OF COMPONENTS FOR AUTOMATIC HANDLING)
 8. AFTER PACKAGING, ROLL 2 METERS OF THE REINFORCEMENT COLLAR TO OUTER CIRCUMFERENCE OF TAPE AND REEL POCKET, AND TAPE DOWN AT THE END THE COLLAR.

| | | |
|------------|-------------|---------------------------|
| HRS | DRAWING NO. | EDC-321216-58-00 |
| | PART NO. | DF40HC(4.0)-60DS-0.4V(58) |
| | CODE NO. | CL0684-4133-9-58 |
| | | \triangle 2/2 |