
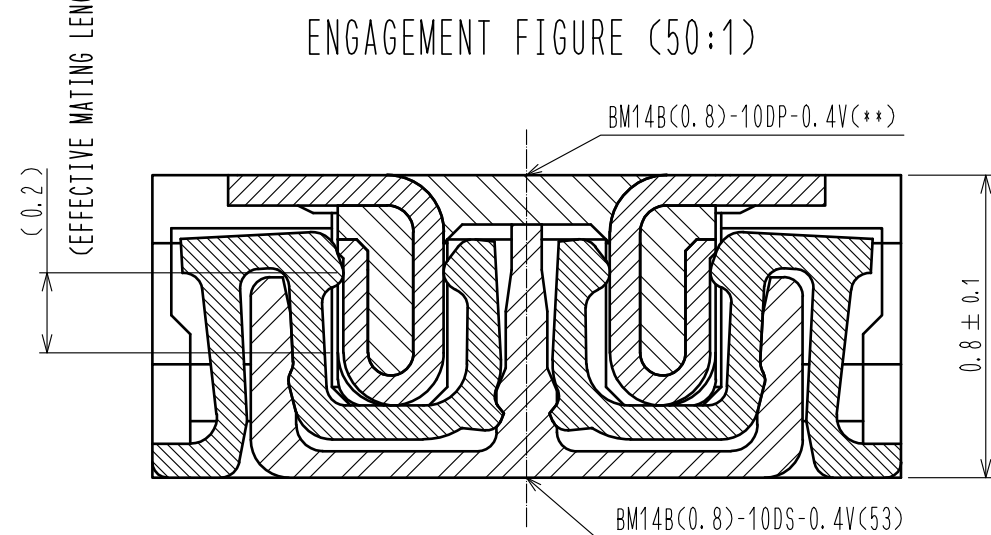
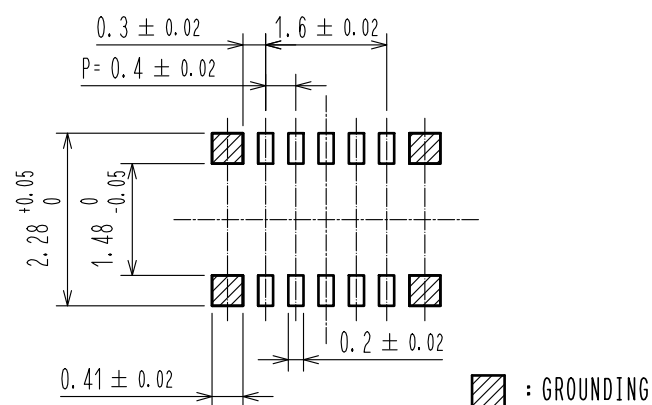


3	PS	CLEAR (ENBOSSED CARRIER TAPE)		6	PS	CLEAR (REINFORCEMENT COLLAR)			
2	PHOSPHOR BRONZE	2		5	PS	BLACK (PLASTIC REEL)			
1	LCP	UL94 V-0, BLACK		4	POLYESTER	CLEAR (COVER TAPE)			
NO.	MATERIAL	FINISH . REMARKS		NO.	MATERIAL	FINISH . REMARKS			
UNITS mm		SCALE 10 : 1		COUNT	DESCRIPTION OF REVISIONS		DESIGNED	CHECKED	DATE
 HIROSE ELECTRIC CO., LTD.		APPROVED	MO. ISHIDA		17. 01. 19	DRAWING NO.			EDC-319838-53-00
		CHECKED	TS. MIYAZAKI		17. 01. 19	PART NO.			BM14B(0.8)-10DS-0.4V(53)
		DESIGNED	NY. YAMASHIRO		17. 01. 19	CODE NO.			CL684-8003-5-53
		DRAWN	SN. NUMAZAKI		17. 01. 18				



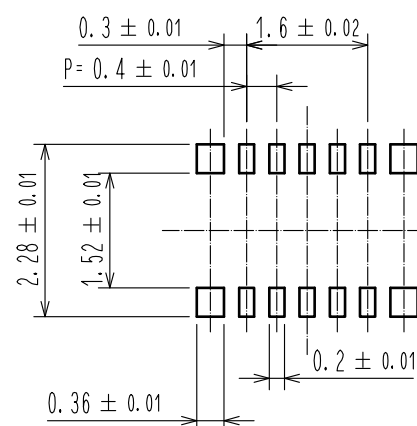
Apr.1.2024 Copyright 2024 HIROSE ELECTRIC CO., LTD. All Rights Reserved.
In case of consideration for using Automotive equipment / device which demand high reliability, kindly contact our sales window correspondents.

◆ RECOMMENDED PCB LAYOUT

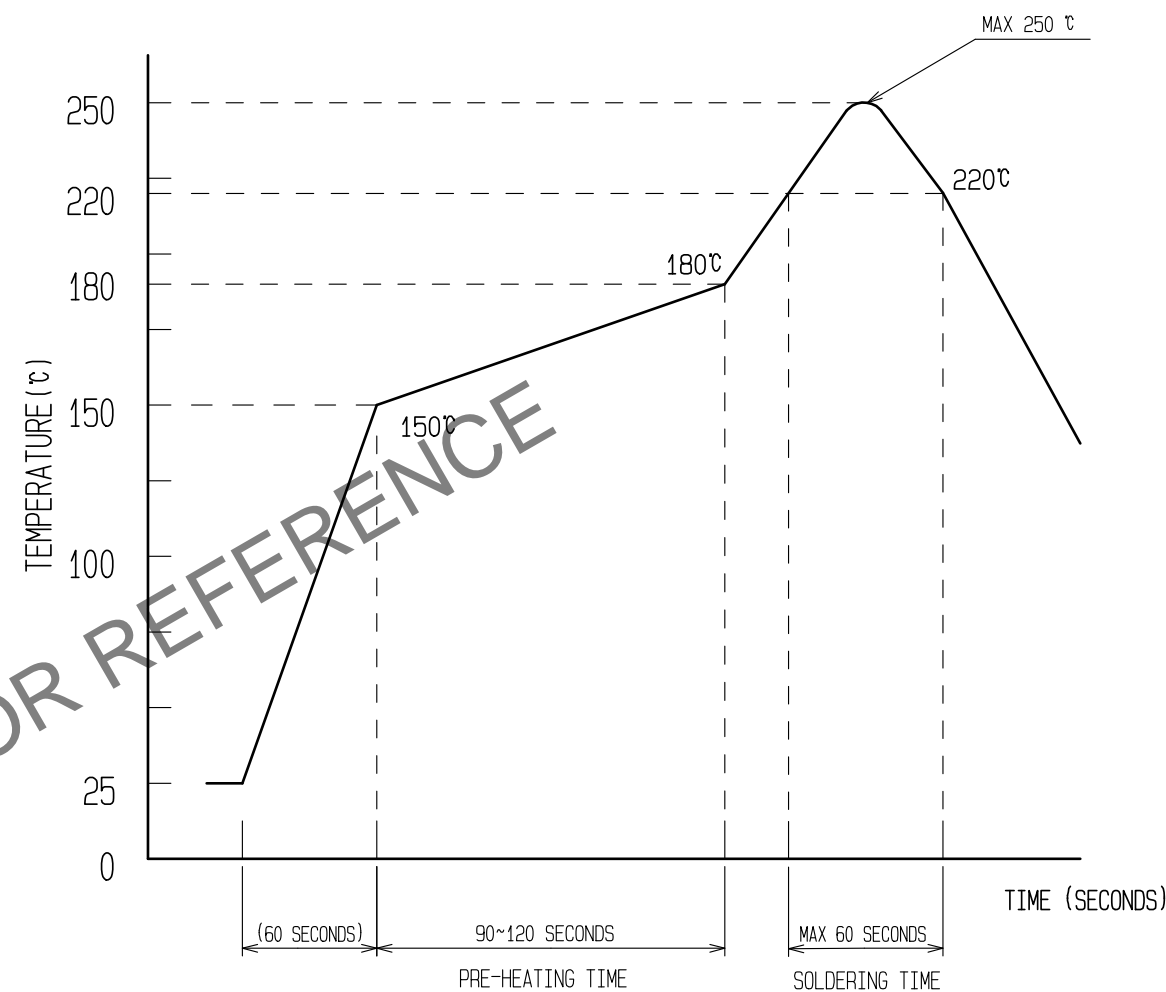


◆ RECOMMENDED METAL MASK DIMENSIONS

METAL MASK THICKNESS : $100 \mu\text{m}$



6 RECOMMENDED REFLOW TEMPERATURE PROFILE USING LEAD-FREE SOLDER PASTE.



REFLOW METHOD: IR REFLOW

NUMBER OF REFLOW CYCLES: 2 CYCLES MAX.

1) REFLOW TIME

DURATION ABOVE 220 $^{\circ}\text{C}$, 60 SEC. MAX.
(PEAK TEMPERATURE: 250 $^{\circ}\text{C}$ MAX)

2) PRE-HEAT TIME

PRE-HEAT TEMPERATURE(MIN): 150 $^{\circ}\text{C}$
PRE-HEAT TEMPERATURE(MAX): 180 $^{\circ}\text{C}$
PRE-HEAT TIME: 90-120 sec.

6 THIS TEMPERATURE PROFILE IS PER THE CONDITIONS SHOWN ABOVE.
ADDITIONAL FACTORS, SUCH AS SOLDER PASTE TYPE, PCB SIZE AND
OTHER MOUNTED COMPONENTS COULD AFFECT THE PROFILE, THEREFORE,
A THOROUGH EVALUATION OF MOUNTING CONDITION IS REQUIRED
PRIOR TO PRODUCTION. TEMPERATURE IS MEASURED AT CONTACT LEAD.

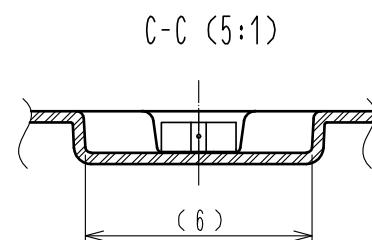
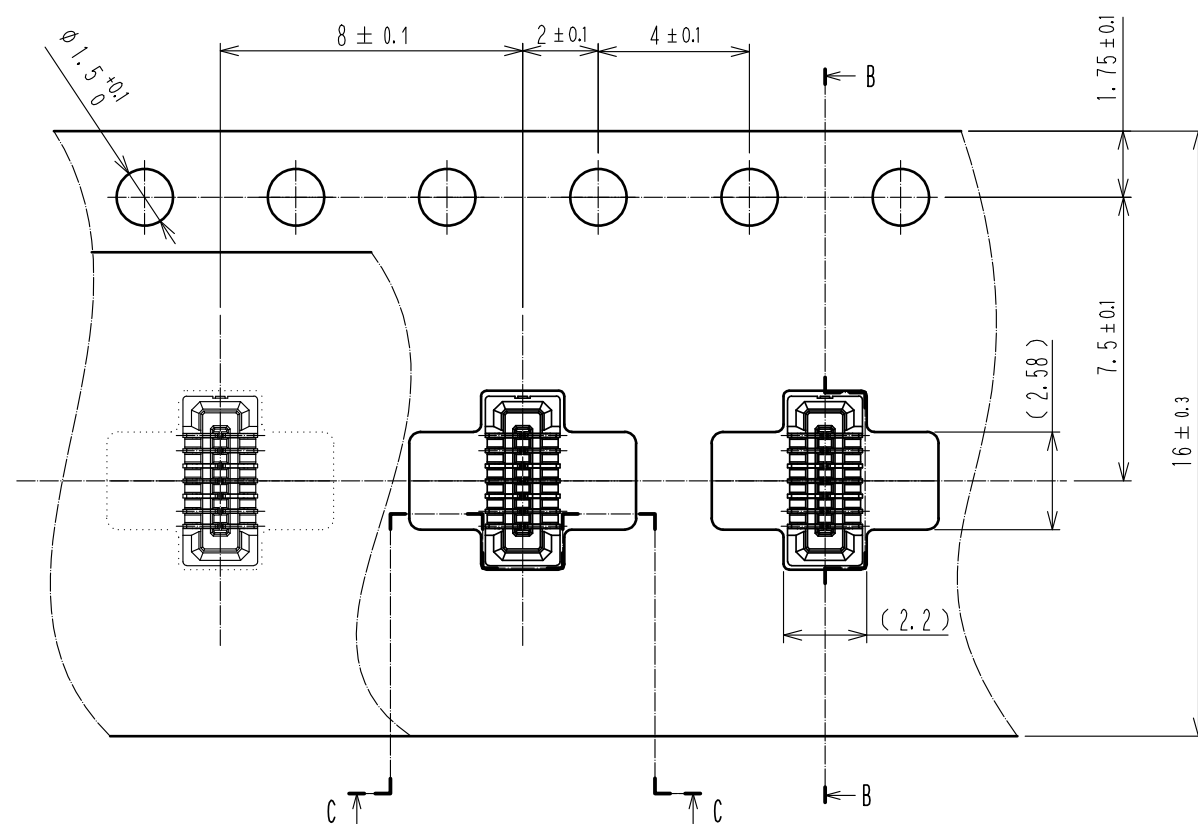
HRS

DRAWING NO.	EDC-319838-53-00
PART NO.	BM14B(0.8)-10DS-0.4V(53)
CODE NO.	CL684-8003-5-53

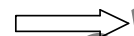
2/3

Apr.1.2024 Copyright 2024 HIROSE ELECTRIC CO., LTD. All Rights Reserved.
In case of consideration for using Automotive equipment / device which demand high reliability, kindly contact our sales window correspondents.

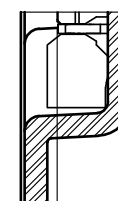
EMBOSSED CARRIER TAPE PACKAGING (5:1)



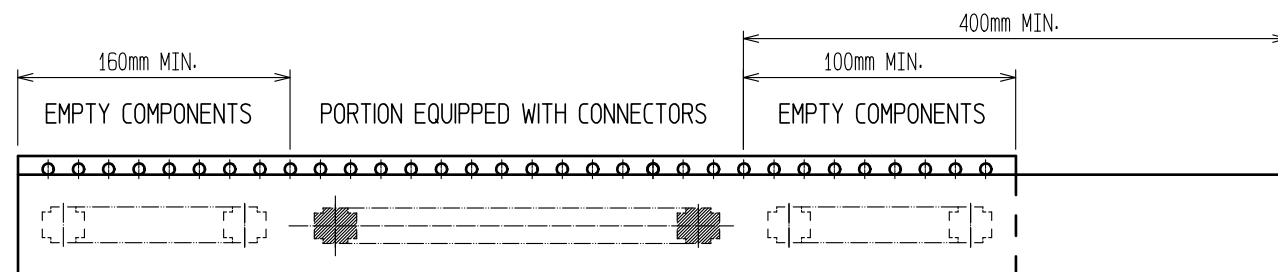
DIRECTION OF UNREELING



E(10:1)



PICK UP AREA : (0.13)

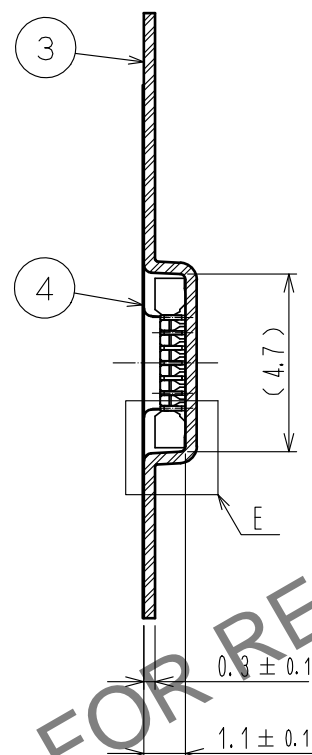


TRAILER

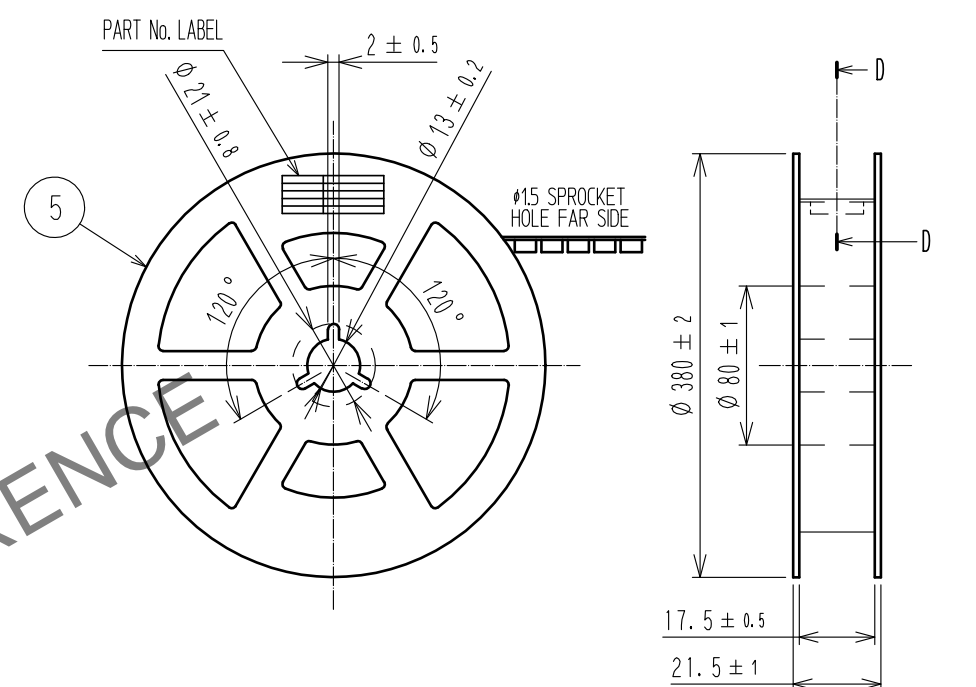
9 TAPING (FREE)

LEADER

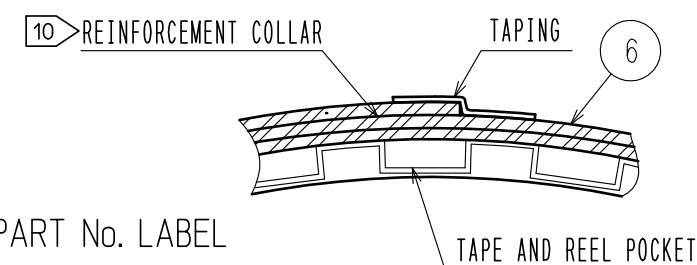
B-B (5:1)



STYLE AND DIMENTION OF REEL (FREE)



D-D (FREE)



DETAIL OF PART No. LABEL

SUPPLIER
QUANTITY
PART No.
CODE No.
DATE OF MANUFACTURED

製造年月日	** ** *
製品コード	CL684-8003-5-53
製品名	BM14B<0.8>-10DS-0.4V<53>
数量	1,000
納入者	ヒロセ電機(株)

7. PER REEL 1000 CONNECTORS.

8. THE DIMENSIONS IN PARENTHESES ARE FOR REFERENCE.

9 REFER TO JIS C 0806(PACKAGING OF COMPONENTS FOR AUTOMATIC HANDLING)

10 AFTER PACKAGING, ROLL 2 METERS OF THE REINFORCEMENT COLLAR TO OUTER CIRCUMFERENCE OF TAPE AND REEL POCKET, AND TAPE DOWN AT THE END THE COLLAR.

HRS

DRAWING NO.	EDC-319838-53-00
PART NO.	BM14B<0.8>-10DS-0.4V<53>
CODE NO.	CL684-8003-5-53