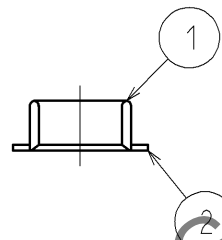
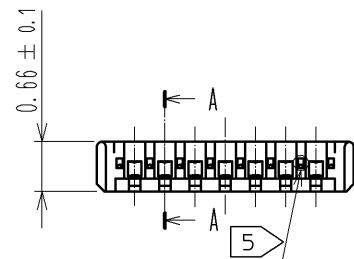
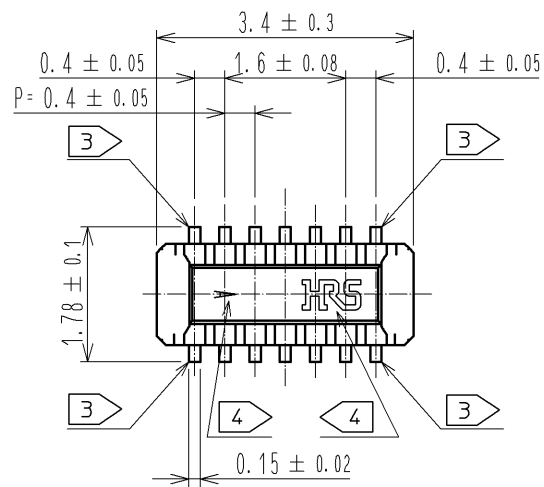
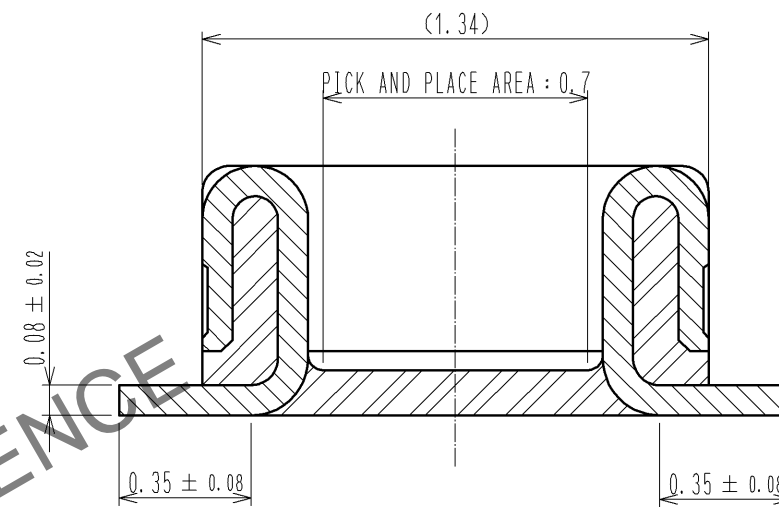


Apr.1.2024 Copyright 2024 HIROSE ELECTRIC CO., LTD. All Rights Reserved.
In case of consideration for using Automotive equipment / device which demand high reliability, kindly contact our sales window correspondents.

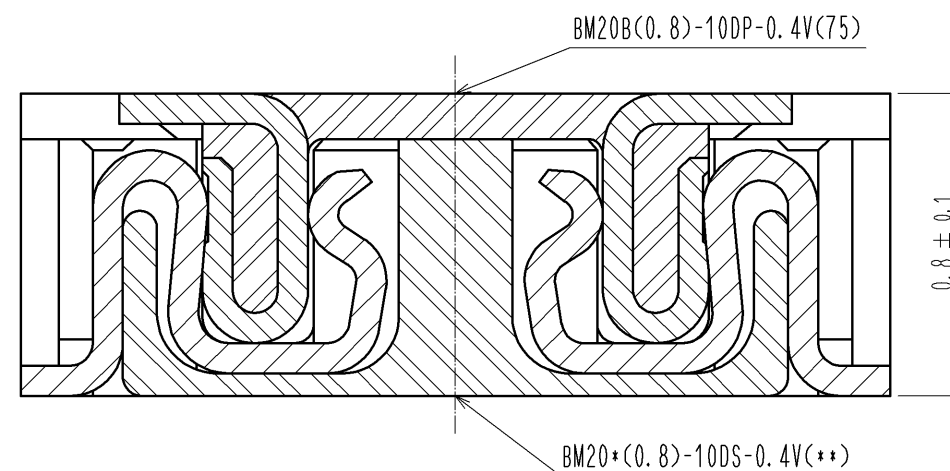


- NOTE 1. ALL LEAD CO-PLANARITY SHALL BE 0.08mm MAX
2. CONTACT PLATING SPECIFICATIONS
CONTACT AREA : GOLD 0.1 μ m MIN
SMT LEAD : GOLD 0.05 μ m MIN
UNDER PLATING : NICKEL 1 μ m MIN
(SURFACE : SEALING)
3. EACH CONTACTS AT 4 CORNERS ARE PROVIDED FOR METAL FITTINGS.
4. HRS MARK AND CAV No. ARE INDICATED IN APPROX POSITION SHOWN.
5. A PART OF THE WALL COULD BE NOTCHED.

A-A (50:1)

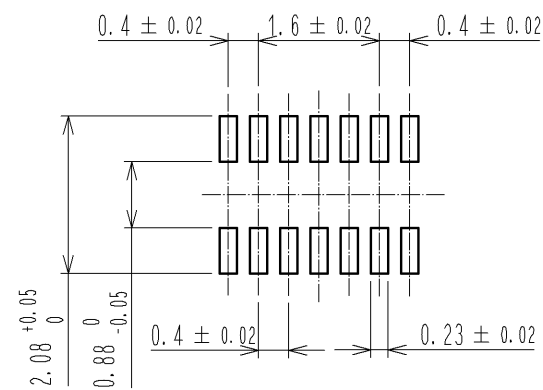


ENGAGEMENT FIGURE (50:1)



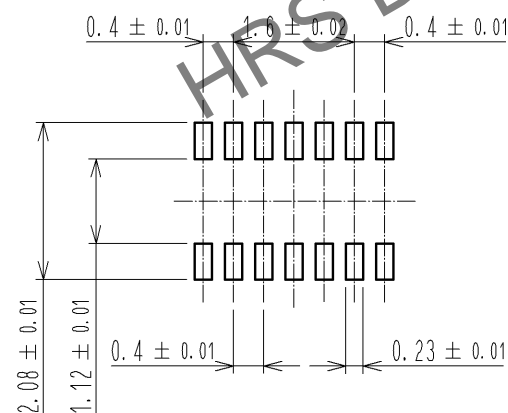
3	PS	CLEAR (EMBOSSED CARRIER TAPE)	6	PS	CLEAR (REINFORCEMENT COLLAR)
2	PHOSPHOR BRONZE	2	5	PS	BLACK (PLASTIC REEL)
1	LCP	UL94 V-0, BLACK	4	POLYESTER	CLEAR (COVER TAPE)
NO.	MATERIAL	FINISH, REMARKS	NO.	MATERIAL	FINISH, REMARKS
UNITS mm		SCALE 10 : 1	COUNT 	DESCRIPTION OF REVISIONS	DESIGNED
	HIROSE ELECTRIC CO., LTD.	APPROVED : KH. IKEDA	13.11.12	DRAWING NO.	EDC4-332307-03
		CHECKED : TS. MIYAZAKI	13.11.12	PART NO.	BM20B(0.8)-10DP-0.4V(75)
		DESIGNED : YK. SATAKE	13.11.12	CODE NO.	CL684-9001-5-75
		DRAWN : KR. AJITO	13.11.12		

◆RECOMMENDED PCB LAYOUT

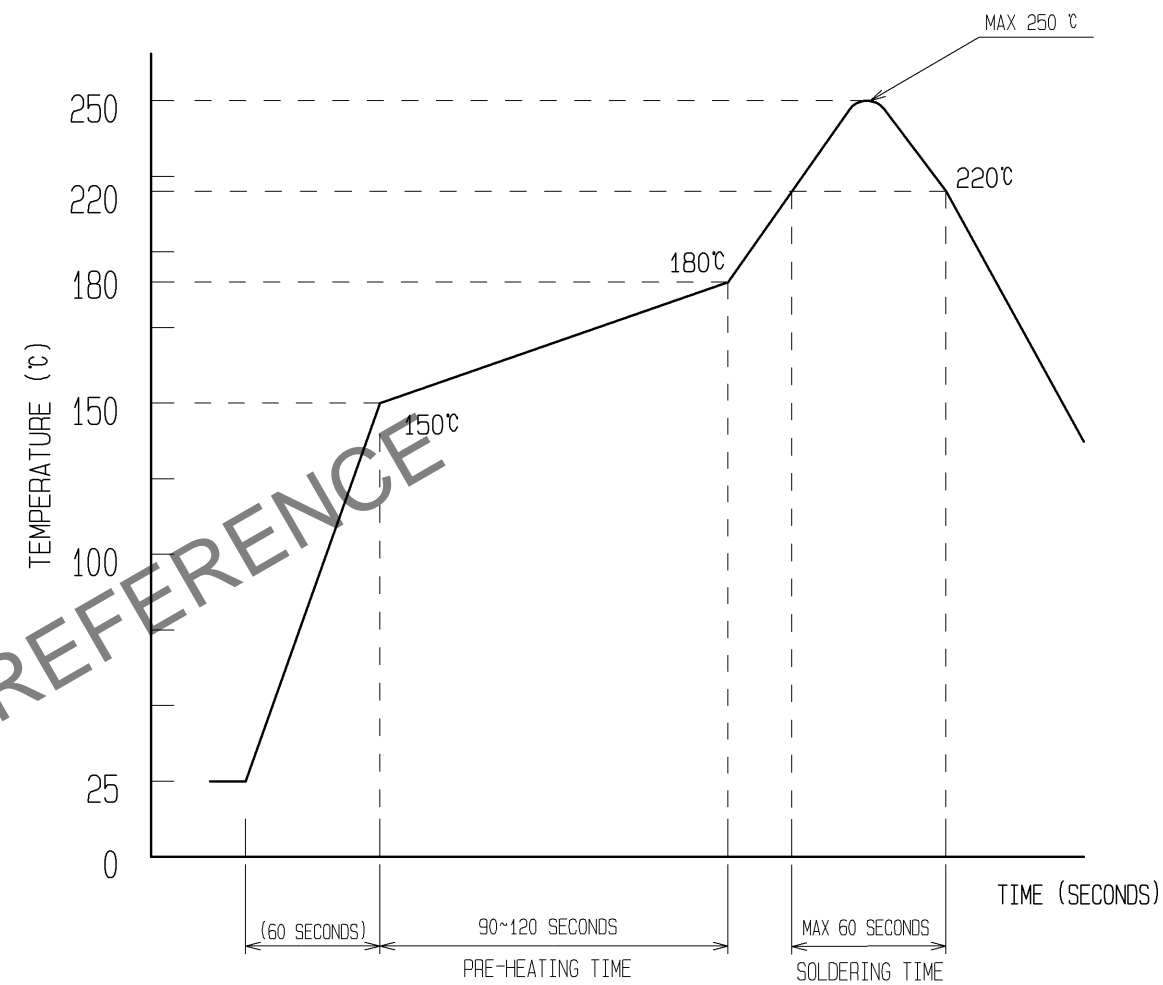


◆RECOMMENDED METAL MASK DIMENSIONS

METAL MASK THICKNESS : $100 \mu\text{m}$



6 RECOMMENDED REFLOW TEMPERATURE PROFILE USING LEAD-FREE SOLDER PASTE.



REFLOW METHOD:IR REFLOW
NUMBER OF REFLOW CYCLES:2 CYCLES MAX.
1)REFLOW TIME
DURATION ABOVE 220 $^{\circ}\text{C}$. 60 SEC MAX.
(PEAK TEMPERATURE:250 $^{\circ}\text{C}$ MAX)
2)PRE-HEAT TIME
PRE-HEAT TEMPERATURE(MIN):150 $^{\circ}\text{C}$
PRE-HEAT TEMPERATURE(MAX):180 $^{\circ}\text{C}$
PRE-HEAT TIME:90-120 SEC.

6 THIS TEMPERATURE PROFILE IS PER THE CONDITIONS SHOWN ABOVE.
ADDITIONAL FACTORS, SUCH AS SOLDER PASTE TYPE, PCB SIZE AND
OTHER MOUNTED COMPONENTS COULD AFFECT THE PROFILE, THEREFORE,
A THOROUGH EVALUATION OF MOUNTING COONDITION IS REQUIRED
PRIOR TO PRODUCTION. TEPERATURE IS MEASURED AT CONTACT LEAD.

HRS

DRAWING NO.	EDC4-332307-03
PART NO.	BM20B(0.8)-10DP-0.4V(75)
CODE NO.	CL684-9001-5-75

2/3

