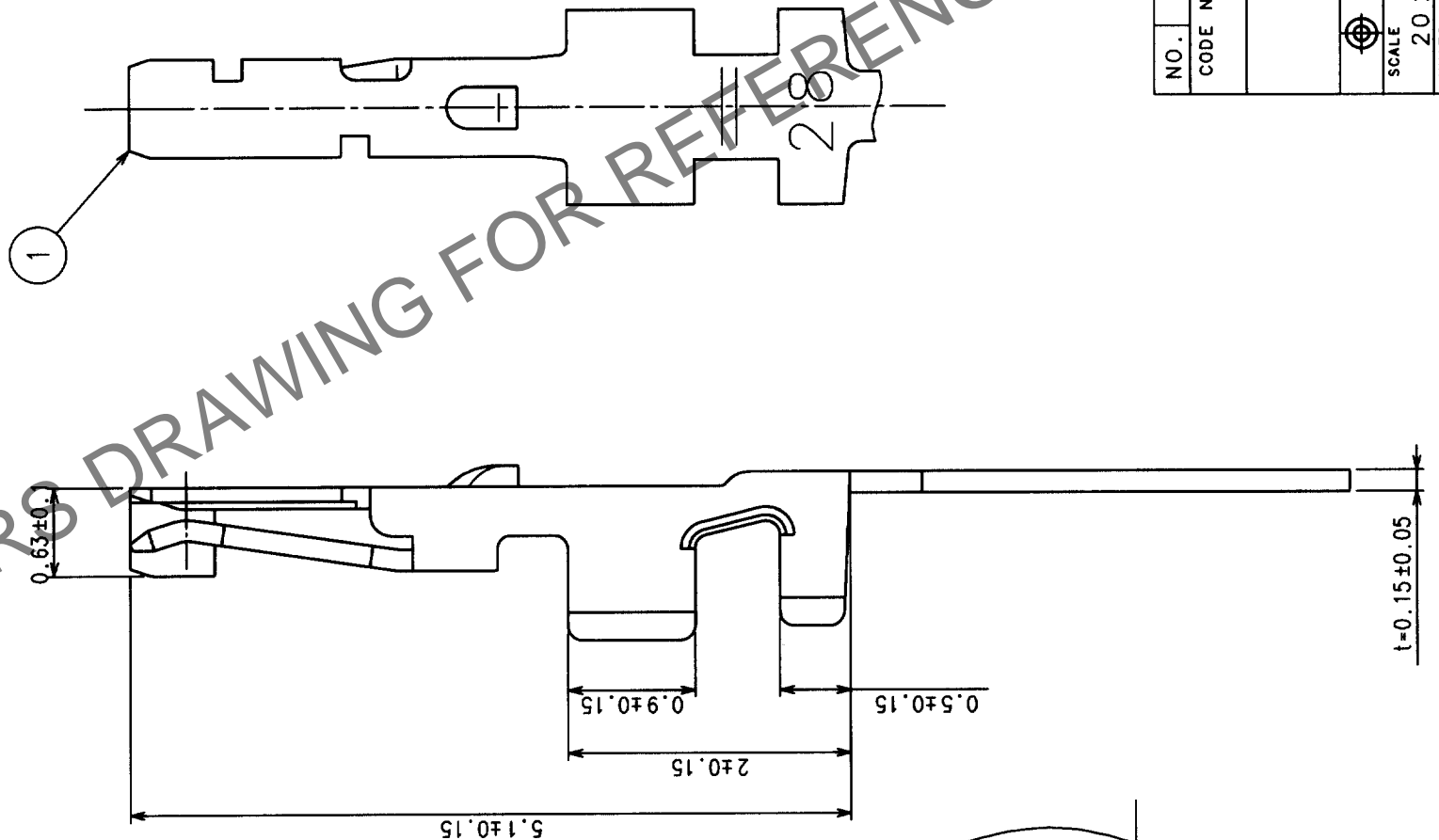
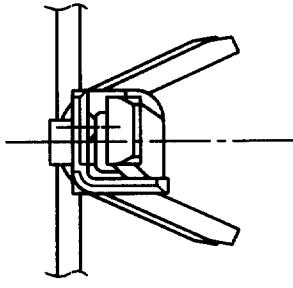


In case of consideration for using Automotive equipment / device which demand high reliability, kindly contact our sales window correspondents.

1 2 3 4 5 6 7 8

COUNT	DESCRIPTION OF REVISIONS	BY	CHKD	DATE	COUNT	DESCRIPTION OF REVISIONS	BY	CHKD	DATE
1	RE-H-04693	W.F.	H.V.	10/12/03					



NOTES 1. PER REEL: 10000 CONTACTS.  
 2. APPLICABLE CABLE  
 CABLE SIZE: 28AWG (7/0.127) AND 30AWG (7/0.10)  
 OUTER DIAMETER: φ0.5 TO 0.6mm.

HRS DRAWING FOR REFERENCE

TO	

NO.	MATERIAL	FINISH, REMARKS	FINISH, REMARKS		
			DESIGNED	CHECKED	APPROVED
1	PHOSPHOR BRONZE		I. TASHIRO 980917	T. OMA 980917	K. KATAYOSE 980918

CONTACT AREA: GOLD PLATED (0.1μm)	
OUTSIDE OF BARREL: TIN PLATED	
OTHERS: NICKEL PLATED	

DRAWING NO.	EDC3-161992	PART NO.	DF19-2830SCFA
SCALE	20:1	CODE NO.	CL685-0001-2
UNITS	mm		