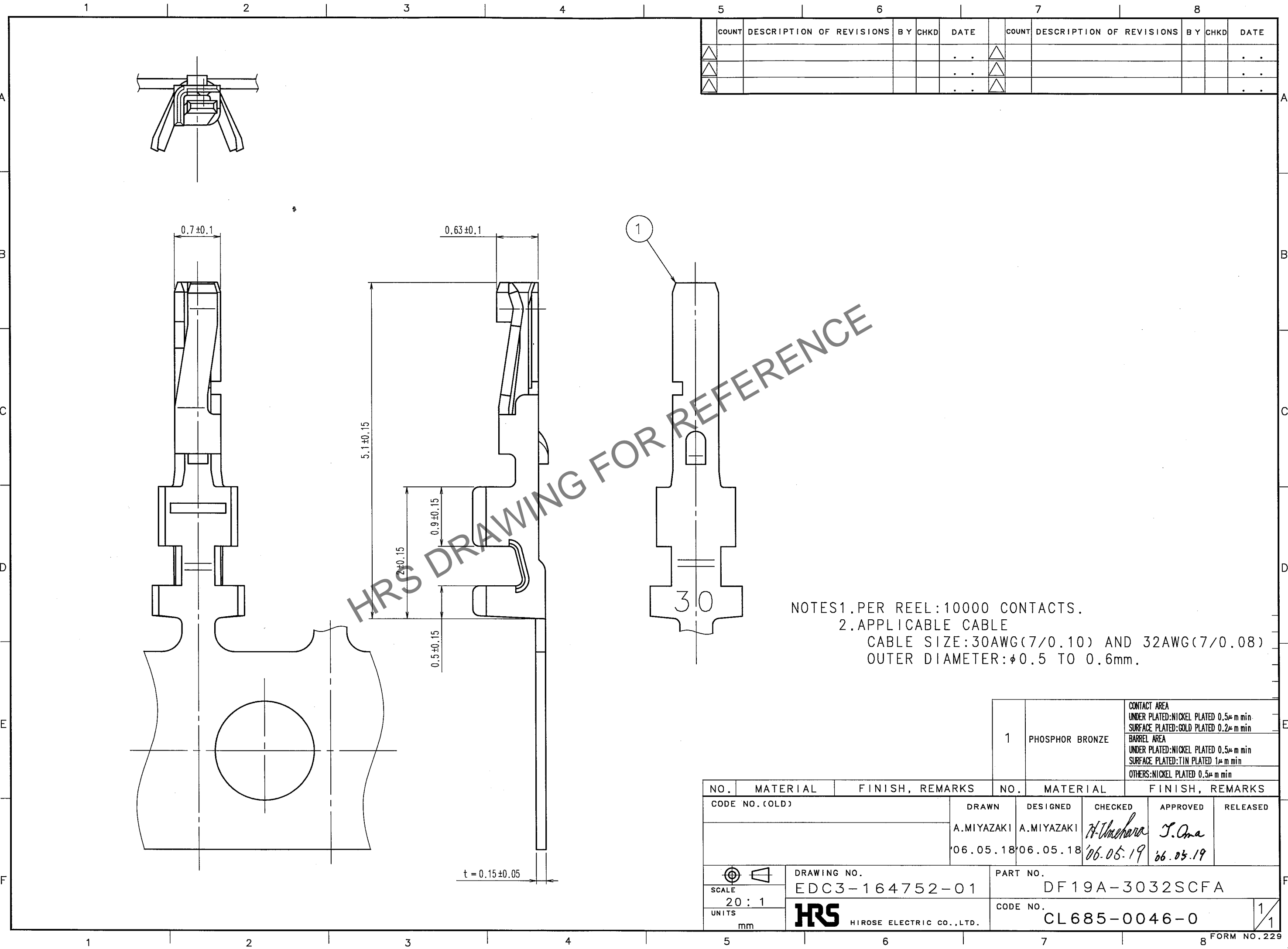


May.1.2024 Copyright 2024 HIROSE ELECTRIC CO., LTD. All Rights Reserved.  
In case of consideration for using Automotive equipment / device which demand high reliability, kindly contact our sales window correspondents.



COUNT	DESCRIPTION OF REVISIONS	BY	CHKD	DATE	COUNT	DESCRIPTION OF REVISIONS	BY	CHKD	DATE
△				..	△				..
△				..	△				..
△				..	△				..

HRS DRAWING FOR REFERENCE

NOTES  
 1. PER REEL: 10000 CONTACTS.  
 2. APPLICABLE CABLE  
 CABLE SIZE: 30AWG(7/0.10) AND 32AWG(7/0.08)  
 OUTER DIAMETER: φ0.5 TO 0.6mm.

TO

1	PHOSPHOR BRONZE	CONTACT AREA UNDER PLATED: NICKEL PLATED 0.5μm min SURFACE PLATED: GOLD PLATED 0.2μm min
		BARREL AREA UNDER PLATED: NICKEL PLATED 0.5μm min SURFACE PLATED: TIN PLATED 1μm min
		OTHERS: NICKEL PLATED 0.5μm min

NO.	MATERIAL	FINISH, REMARKS	NO.	MATERIAL	FINISH, REMARKS

CODE NO. (OLD)	DRAWN	DESIGNED	CHECKED	APPROVED	RELEASED
	A.MIYAZAKI	A.MIYAZAKI	<i>H. Umehara</i>	<i>T. Oma</i>	
	'06.05.18	'06.05.18	'06.05.19	'06.05.19	

DRAWING NO. EDC3-164752-01 SCALE 20:1 UNITS mm	PART NO. DF19A-3032SCFA CODE NO. CL685-0046-0	1/1
---	--	-----