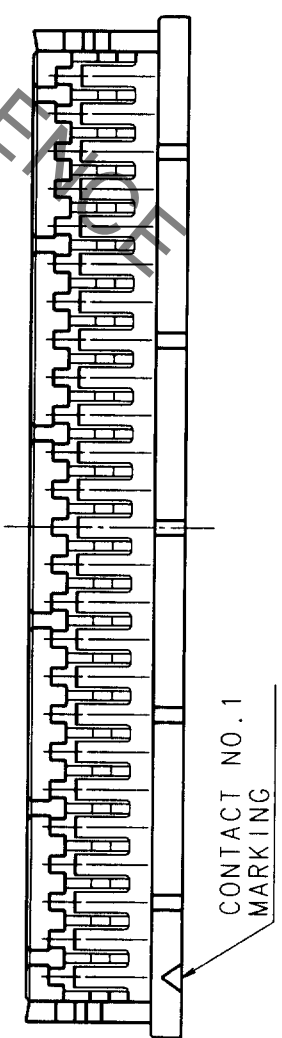
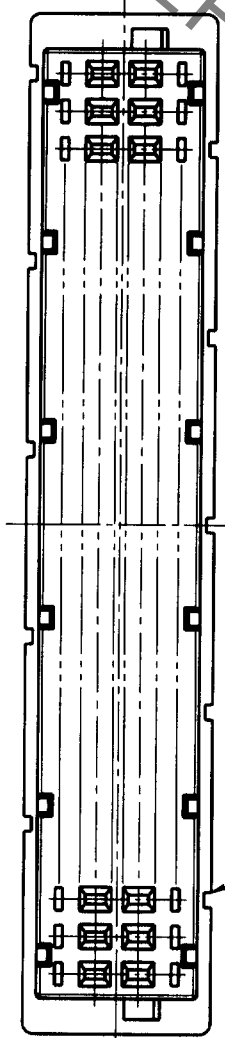
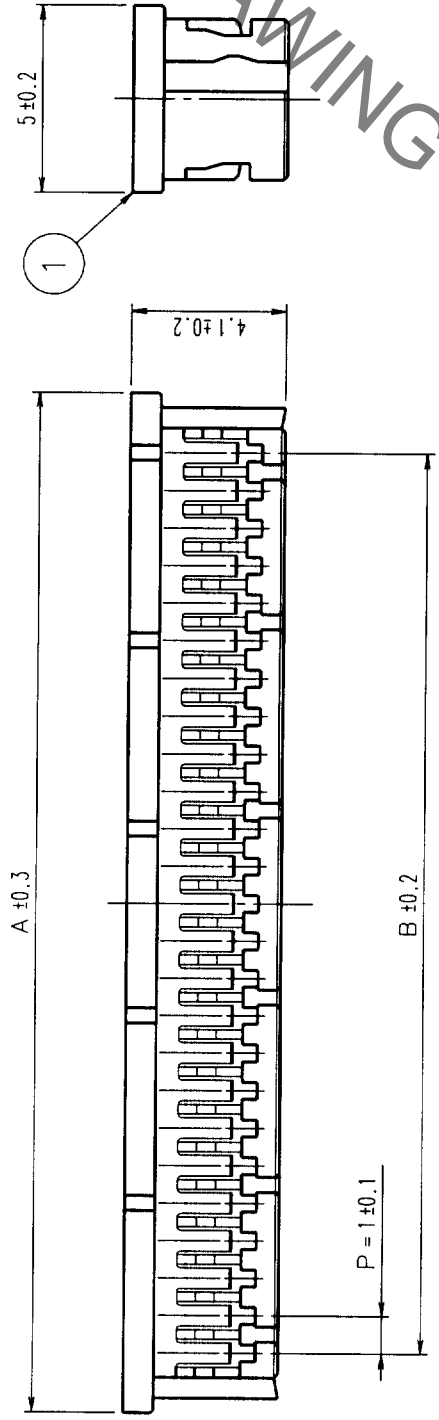
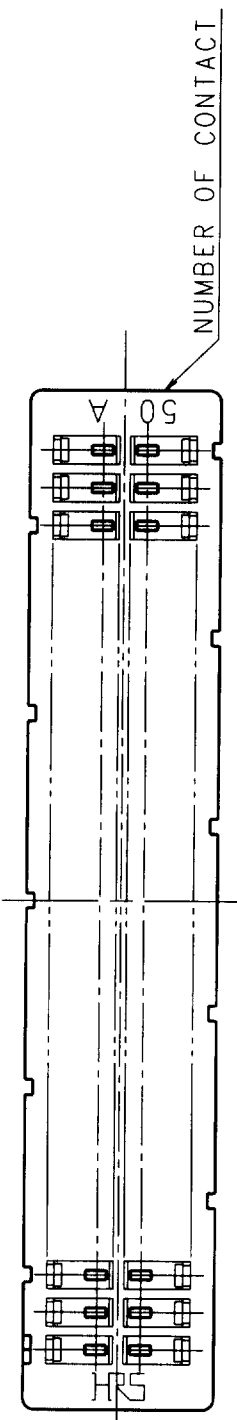


In case of consideration for using Automotive equipment / device which demand high reliability, kindly contact our sales window correspondents.

COUNT DESCRIPTION OF REVISIONS	BY	CHKD	DATE	COUNT DESCRIPTION OF REVISIONS	BY	CHKD	DATE
△				△			
△				△			
△				△			



PART NO.	HRS NO.	CONTACT	A	B
DF20A-10DS-1C	CL686-0020-3	10	7.2	4.0
DF20A-20DS-1C	CL686-0021-6	20	12.2	9.0
DF20A-30DS-1C	CL686-0022-9	30	17.2	14.0
DF20A-40DS-1C	CL686-0023-1	40	22.2	19.0
DF20A-50DS-1C	CL686-0024-4	50	27.2	24.0

NOTES1. THE MINIMUM ORDERING QUANTITY IS ONE PACKING.
(CONTAINING 100 PIECES)

TO	

NO.	MATERIAL	FINISH, REMARKS	NO.	MATERIAL	FINISH, REMARKS
1	POLYAMIDE		1	POLYAMIDE	UL94V-0, GRAY

CODE NO. (OLD)	CL	DRAWN	H. UMEHARA	DESIGNED	H. UMEHARA	CHECKED	K. KATAYAMA	APPROVED	K. KATAYAMA	REMARKS	RELEASED
			98.11.12		98.11.12		98.11.16		98.11.16		

DRAWING NO.	EDC3-162771	PART NO.	DF20A- *DS-1C
SCALE	5 : 1	CODE NO.	CL 686
UNITS	mm		