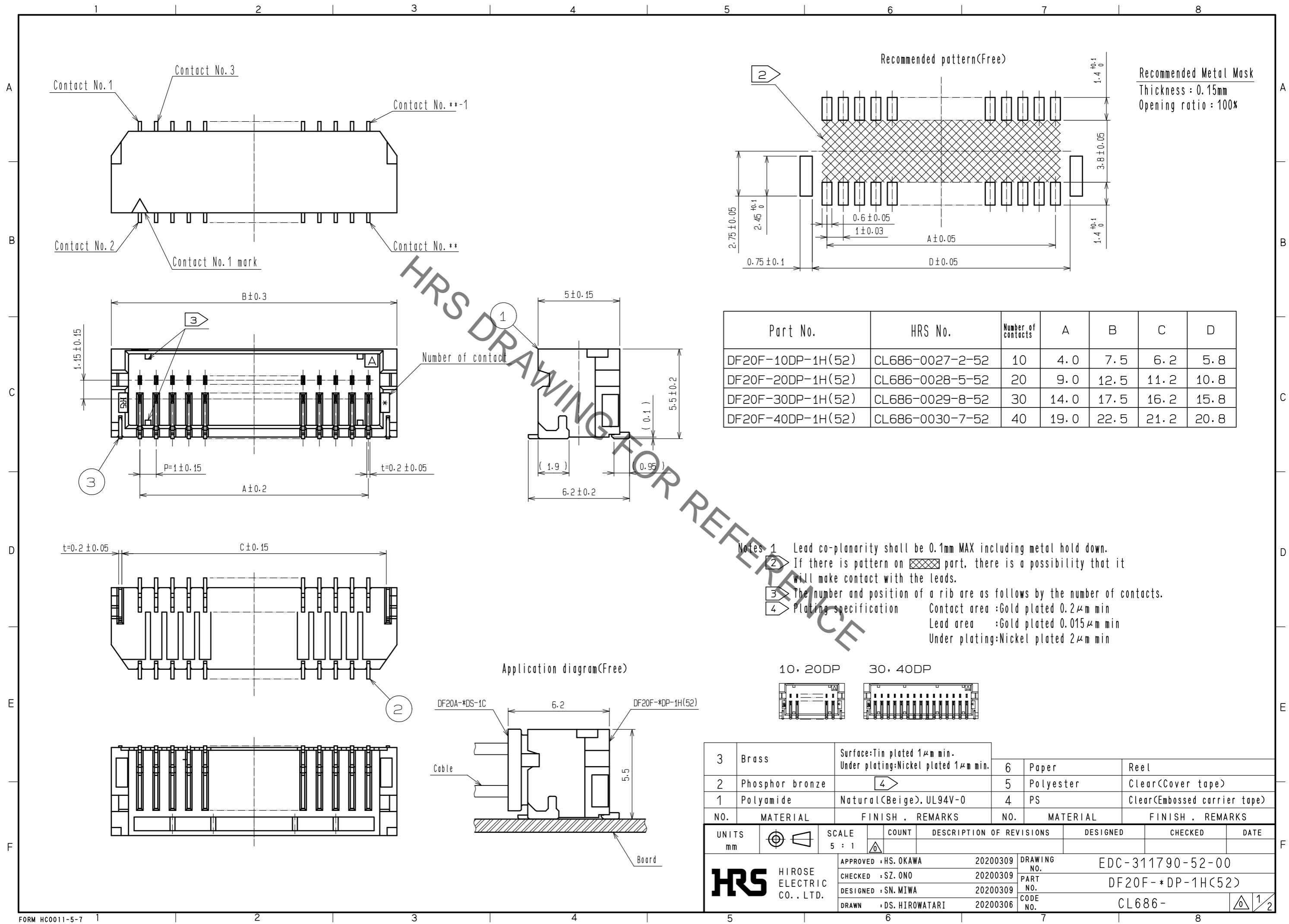


Apr.1.2022 Copyright 2022 HIROSE ELECTRIC CO., LTD. All Rights Reserved.
In case of consideration for using Automotive equipment / device which demand high reliability, kindly contact our sales window correspondents.



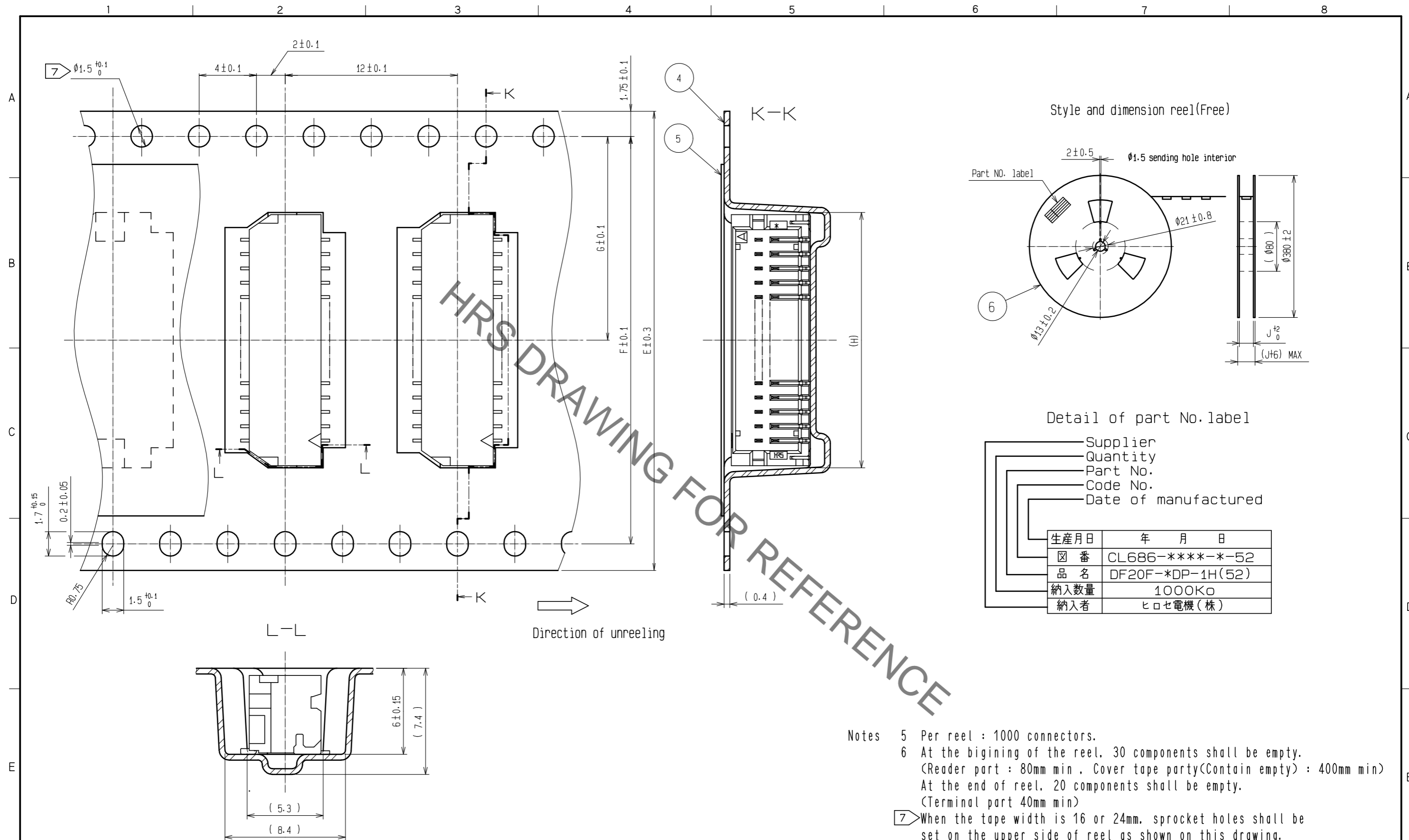
Part No.	HRS No.	Number of contacts	A	B	C	D
DF20F-10DP-1H(52)	CL686-0027-2-52	10	4.0	7.5	6.2	5.8
DF20F-20DP-1H(52)	CL686-0028-5-52	20	9.0	12.5	11.2	10.8
DF20F-30DP-1H(52)	CL686-0029-8-52	30	14.0	17.5	16.2	15.8
DF20F-40DP-1H(52)	CL686-0030-7-52	40	19.0	22.5	21.2	20.8

NO.	MATERIAL	FINISH . REMARKS	NO.	MATERIAL	FINISH . REMARKS
3	Brass	Surface: Tin plated 1μm min. Under plating: Nickel plated 1μm min.	6	Paper	Reel
2	Phosphor bronze		5	Polyester	Clear(Cover tape)
1	Polyamide	Natural(Beige), UL94V-0	4	PS	Clear(Embossed carrier tape)

UNITS	SCALE	COUNT	DESCRIPTION OF REVISIONS	DESIGNED	CHECKED	DATE
mm	5 : 1					

HRS HIROSE ELECTRIC CO., LTD.	APPROVED : HS. OKAWA 20200309	DRAWING NO. EDC-311790-52-00
	CHECKED : SZ. ONO 20200309	PART NO. DF20F-*DP-1H(52)
	DESIGNED : SN. MIWA 20200309	CODE NO. CL686-
	DRAWN : DS. HIROWATARI 20200306	

Apr.1.2022 Copyright 2022 HIROSE ELECTRIC CO., LTD. All Rights Reserved.
 In case of consideration for using Automotive equipment / device which demand high reliability, kindly contact our sales window correspondents.



HRS DRAWING FOR REFERENCE

- Notes
- 5 Per reel : 1000 connectors.
 - 6 At the beginning of the reel, 30 components shall be empty.
 (Reader part : 80mm min. Cover tape party(Contain empty) : 400mm min)
 At the end of reel, 20 components shall be empty.
 (Terminal part 40mm min)
 - 7 When the tape width is 16 or 24mm, sprocket holes shall be set on the upper side of reel as shown on this drawing.

Part No.	HRS No.	Number of contacts	E	F	G	H	J
DF20F-10DP-1H(52)	CL686-0027-2-52	10	16	-	7.5	7.8	16.4
DF20F-20DP-1H(52)	CL686-0028-5-52	20	24	-	11.5	12.8	24.4
DF20F-30DP-1H(52)	CL686-0029-8-52	30	32	28.4	14.2	17.8	32.4
DF20F-40DP-1H(52)	CL686-0030-7-52	40	44	40.4	20.2	22.8	44.4

HRS	DRAWING NO.	EDC-311790-52-00
	PART NO.	DF20F-*DP-1H(52)
	CODE NO.	CL686-