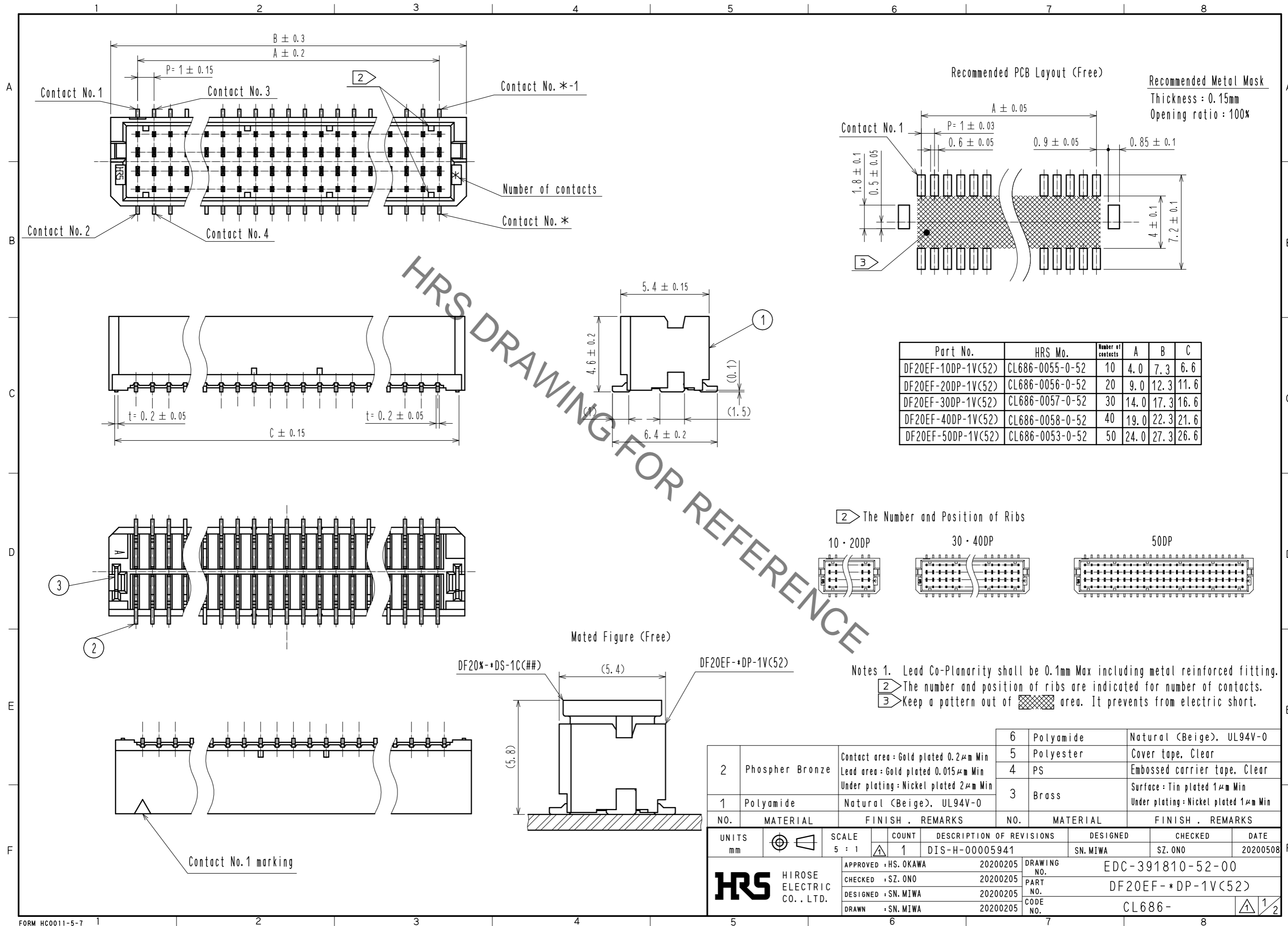


Apr.1.2022 Copyright 2022 HIROSE ELECTRIC CO., LTD. All Rights Reserved.
In case of consideration for using Automotive equipment / device which demand high reliability, kindly contact our sales window correspondents.



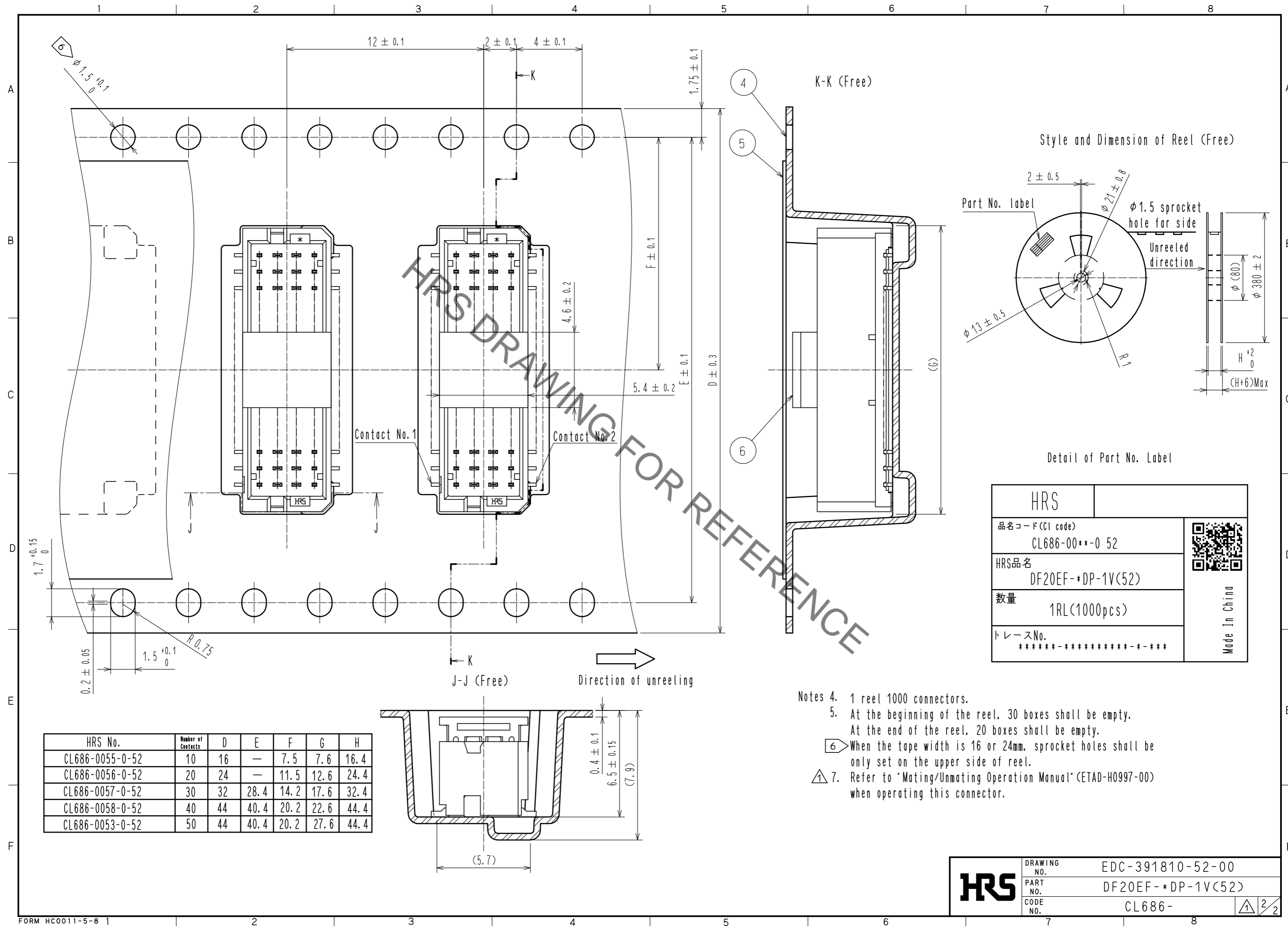
NO.	MATERIAL	FINISH	REMARKS	NO.	MATERIAL	FINISH	REMARKS
2	Phosphor Bronze	Contact area : Gold plated 0.2μm Min Lead area : Gold plated 0.015μm Min Under plating : Nickel plated 2μm Min		6	Polyamide	Natural (Beige), UL94V-0	
1	Polyamide	Natural (Beige), UL94V-0		5	Polyester	Cover tape, Clear	
				4	PS	Embossed carrier tape, Clear	
				3	Brass	Surface : Tin plated 1μm Min Under plating : Nickel plated 1μm Min	

UNITS	SCALE	COUNT	DESCRIPTION OF REVISIONS	DESIGNED	CHECKED	DATE
mm	5 : 1	1	DIS-H-00005941	SN.MIWA	SZ.ONO	20200508

APPROVED	DATE	DRAWING NO.
HS. OKAWA	20200205	EDC-391810-52-00
CHECKED	DATE	PART NO.
SZ. ONO	20200205	DF20EF-*DP-1V(52)
DESIGNED	DATE	CODE NO.
SN. MIWA	20200205	CL686-
DRAWN	DATE	
SN. MIWA	20200205	




Apr.1.2022 Copyright 2022 HIROSE ELECTRIC CO., LTD. All Rights Reserved.
In case of consideration for using Automotive equipment / device which demand high reliability, kindly contact our sales window correspondents.

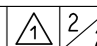


HRS No.	Number of Contacts	D	E	F	G	H
CL686-0055-0-52	10	16	—	7.5	7.6	16.4
CL686-0056-0-52	20	24	—	11.5	12.6	24.4
CL686-0057-0-52	30	32	28.4	14.2	17.6	32.4
CL686-0058-0-52	40	44	40.4	20.2	22.6	44.4
CL686-0053-0-52	50	44	40.4	20.2	27.6	44.4

Detail of Part No. Label

HRS		 Made In China
品名コード (CI code)	CL686-00**-0 52	
HRS品名	DF20EF-*DP-1V(52)	
数量	1RL(1000pcs)	
トレースNo.	*****-*****-**-***	

- Notes
- 1 reel 1000 connectors.
 - At the beginning of the reel, 30 boxes shall be empty.
At the end of the reel, 20 boxes shall be empty.
 - When the tape width is 16 or 24mm, sprocket holes shall be only set on the upper side of reel.
 - Refer to 'Mating/Unmating Operation Manual' (ETAD-H0997-00) when operating this connector.

HRS	DRAWING NO.	EDC-391810-52-00
	PART NO.	DF20EF-*DP-1V(52)
	CODE NO.	CL686-
		 2/2