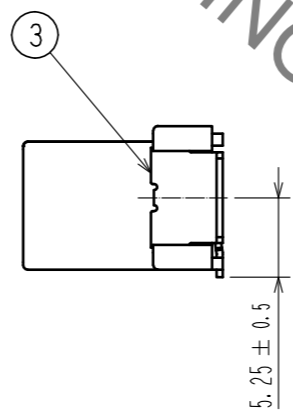
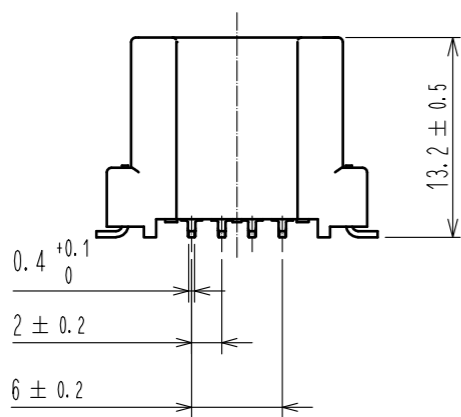
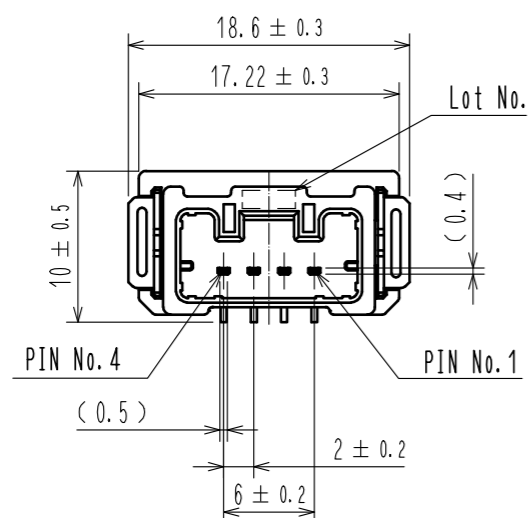
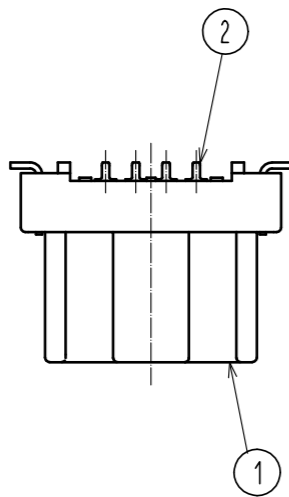
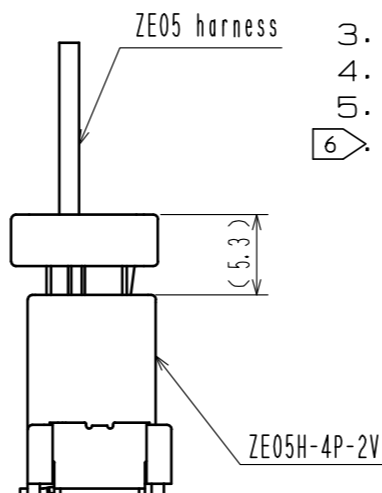


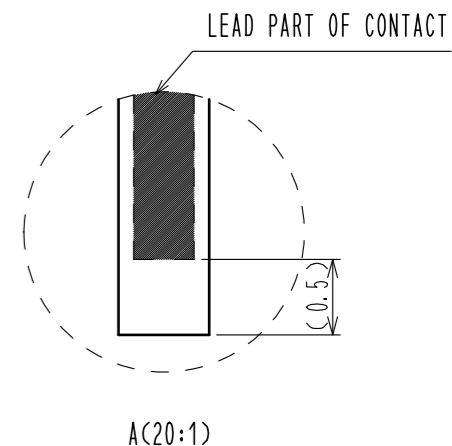
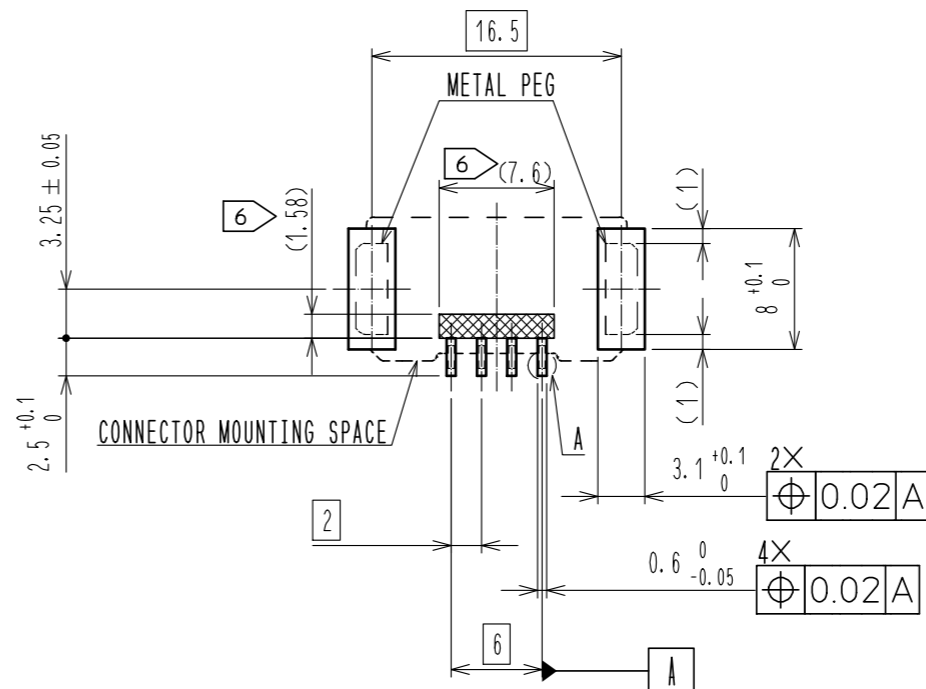
ELV, ROHS COMPLIANT



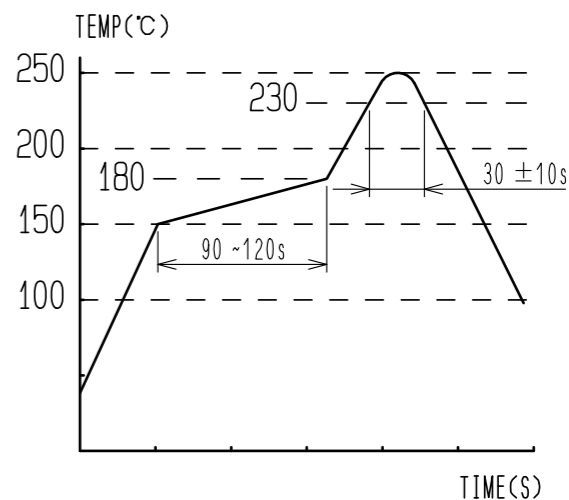
MATED CONNECTORS



RECOMMENDED PCB PATTERN



NOTE 1. RECOMMENDED TEMPERATURE PROFILE FOR REFLOW (REFER TO RIGHT FIG.)  
 USED REFLOW SYSTEM : IR IN THE AIR OR NITROGEN  
 NO. OF CYCLES : 2 MAX  
 PEAK : 250°C  
 OVER 230°C : 20~40s  
 PREHEAT : 150~180°C  
 90~120s



- 2. TEMPERATURE FOR SOLDERING IRON : 280~300°C WITHIN 2s
- 3. CO-PLANARITY SHALL BE 0.1mm MAX.
- 4. RECOMMENDED PCB THICKNESS IS 1.6mm.
- 5. RECOMMENDED SOLDER THICKNESS IS 0.15mm.

6. [Symbol] : PROHIBITED PATTERN AREA

3	BRASS	SURFACE PLATING : TIN PLATING 1μm min			
		UNDER PLATING : NICKEL 1μm min			
2	BRASS	SURFACE PLATING : TIN PLATING 1μm min	6	POLYIMIDE	PICK & PLACE TAPE
		UNDER PLATING : NICKEL 1μm min	5	POLYESTER	
1	PA	BLACK UL94V-0	4	POLYSTYRENE	
NO.	MATERIAL	FINISH . REMARKS	NO.	MATERIAL	FINISH . REMARKS
UNITS	mm	SCALE	2 : 1	COUNT	2
		DESCRIPTION OF REVISIONS	DESIGNED	CHECKED	DATE
		DIS-T-00006748	YH.MAMADA	HH.TSUKUMO	20200920
APPROVED : HK. UMEHARA		20181127	DRAWING NO. EDC-376503-00-00		
CHECKED : AH. EDASHIGE		20181127	PART NO. ZE05H-4P-2V		
DESIGNED : TY. ISHIGURO		20181127	CODE NO. CL752-2310-0-00		
DRAWN : TY. ISHIGURO		20181127	1/2		

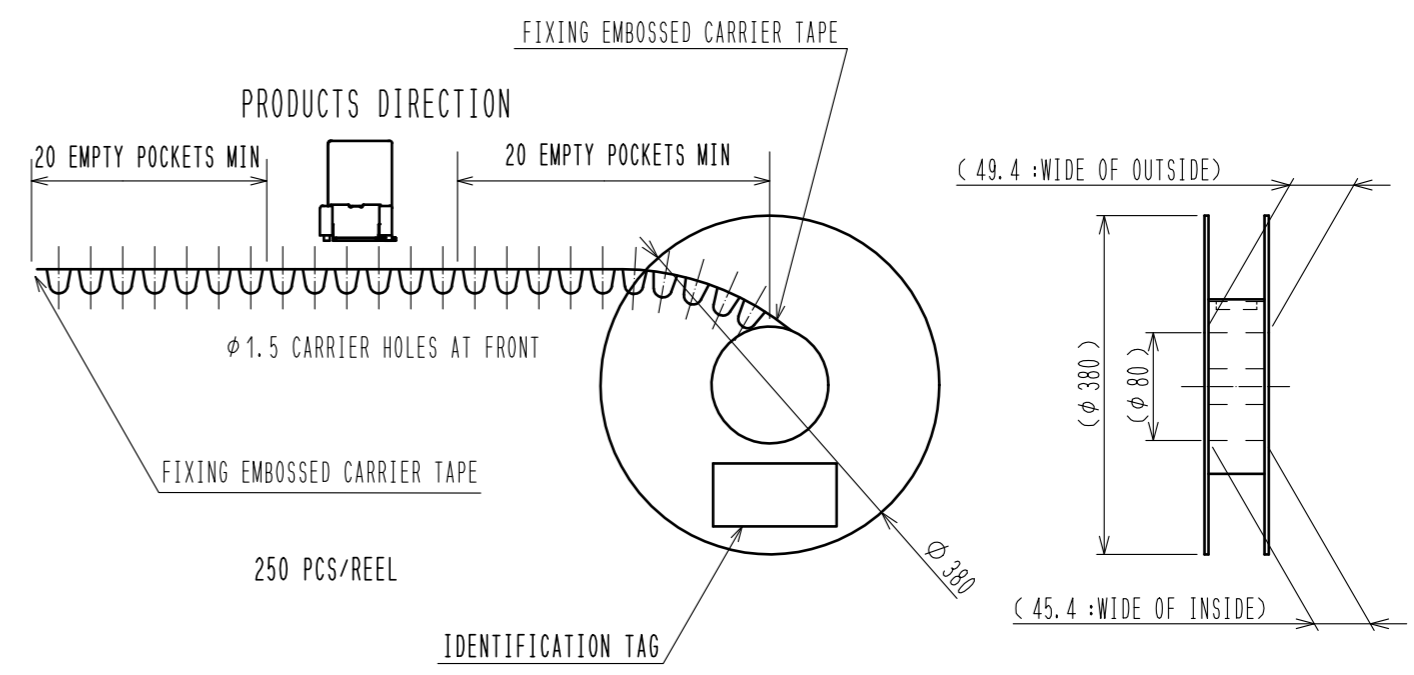
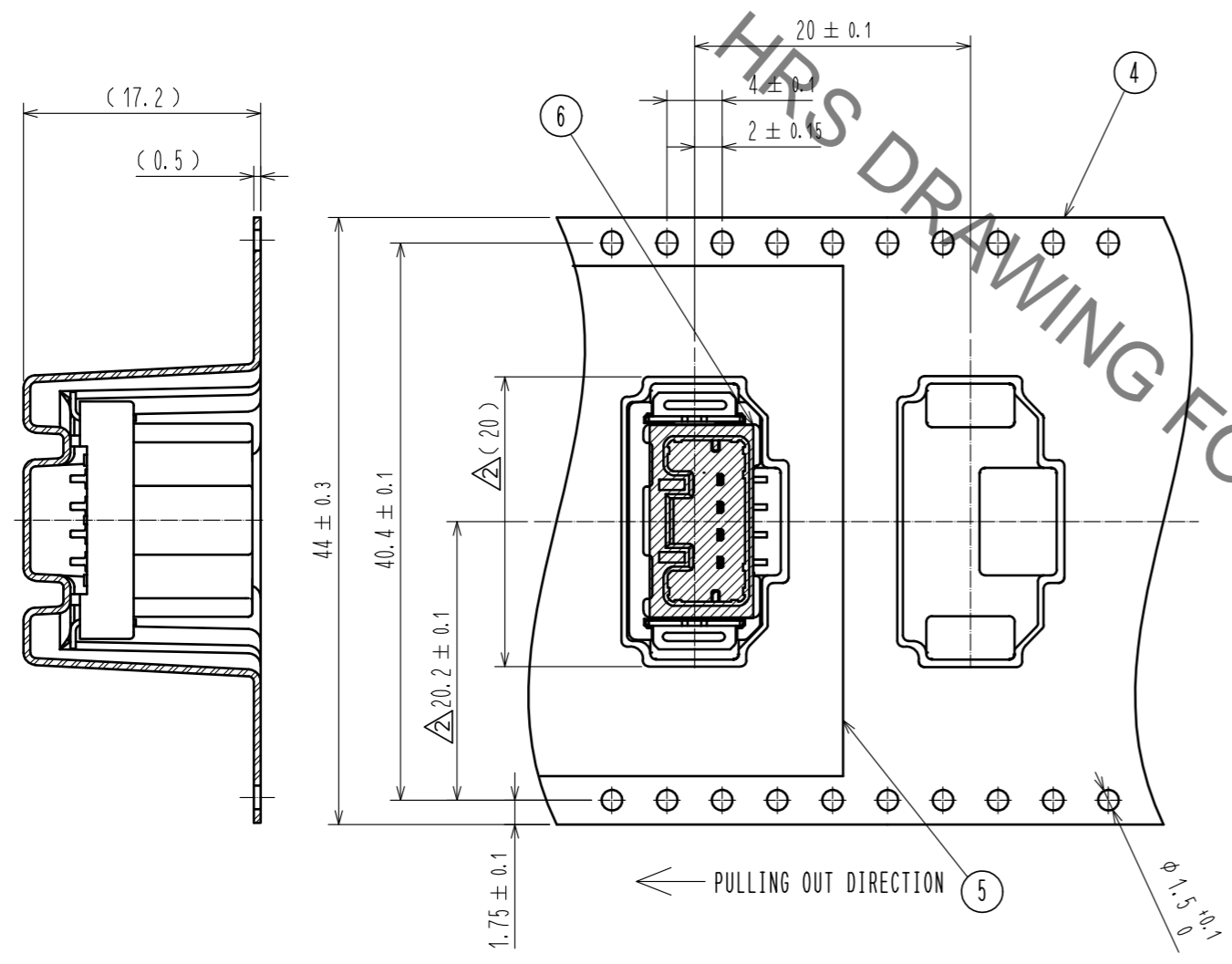
Sep.1.2021 Copyright 2021 HIROSE ELECTRIC CO., LTD. All Rights Reserved. In case of consideration for using Automotive equipment / device which demand high reliability, kindly contact our sales window correspondents.

Sep.1.2021 Copyright 2021 HIROSE ELECTRIC CO., LTD. All Rights Reserved.  
 In case of consideration for using Automotive equipment / device which demand high reliability, kindly contact our sales window correspondents.

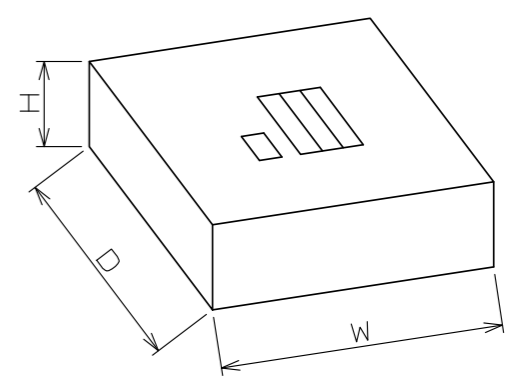
# PACKING STYLE

# REEL DIMENSION (FREE)

## PACKING STYLE DRAWING



# CARDBOARD DIMENSION (FREE)



W=(405) (mm)  
 D=(405) (mm)  
 H=(51) (mm)

<b>HRS</b>	DRAWING NO.	EDC-376503-00-00	2/2
	PART NO.	ZE05H-4P-2V	
	CODE NO.	CL752-2310-0-00	