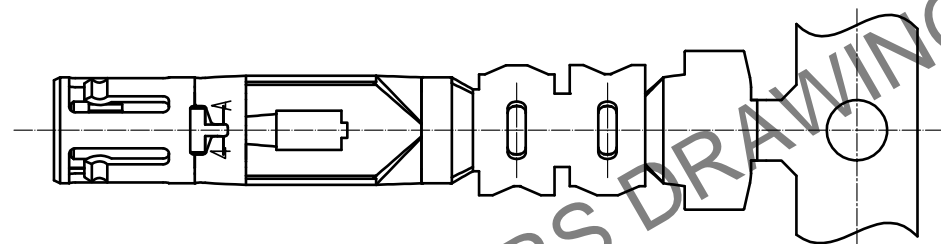
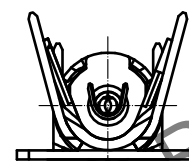
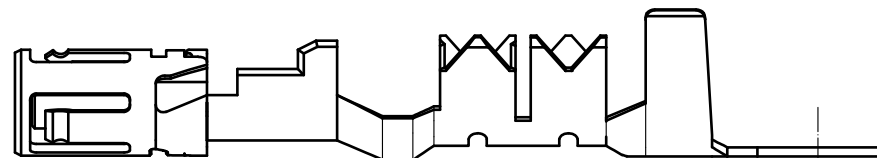
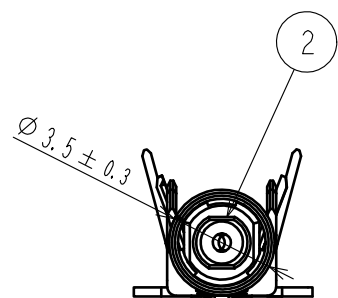
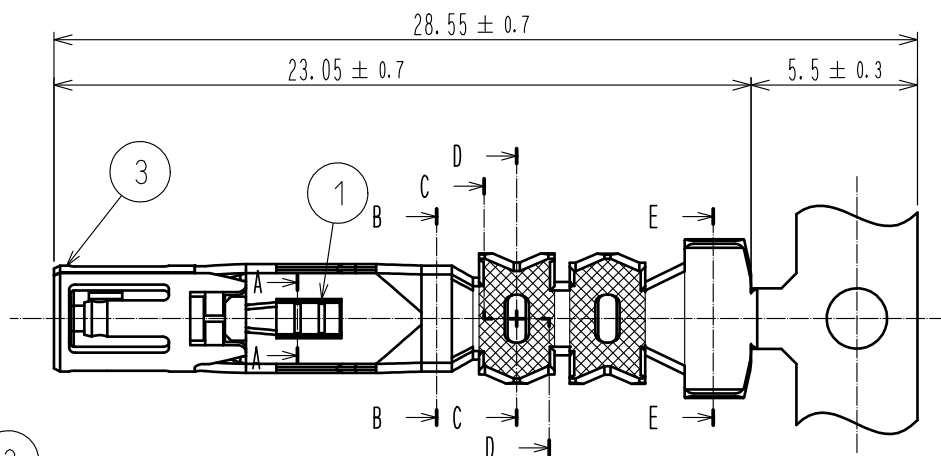


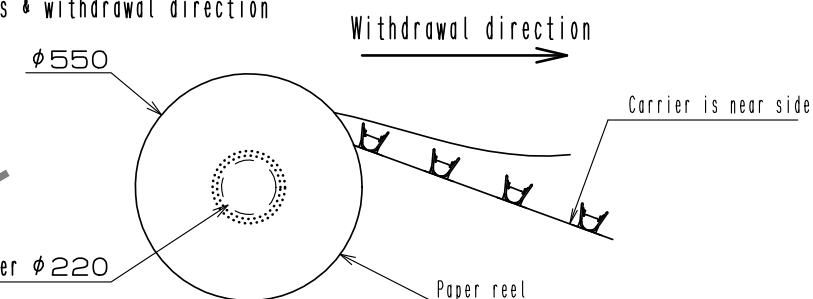
Feb.1.2024 Copyright 2024 HIROSE ELECTRIC CO., LTD. All Rights Reserved.
In case of consideration for using Automotive equipment / device which demand high reliability, kindly contact our sales window correspondents.

ELV. RoHS COMPLIANT

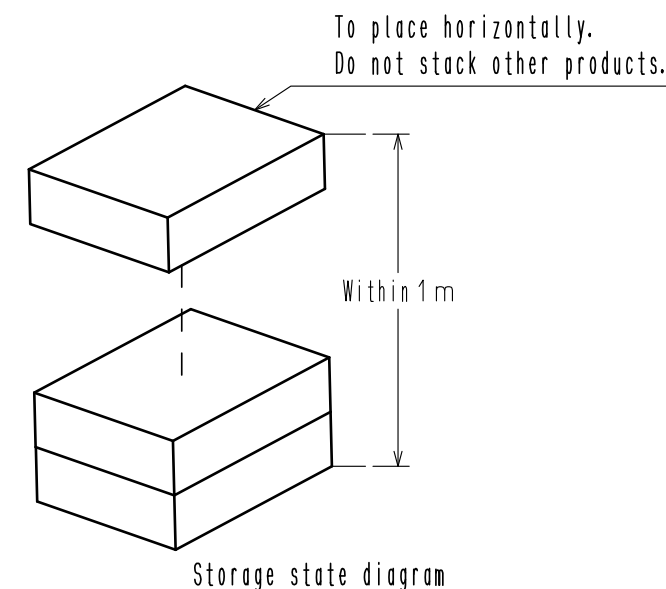


△ Packing specifications

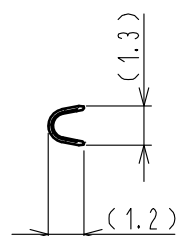
- 1) How to connect carriers when reeling up
Max 6 joints per reel. Connect the carriers with interlayer paper.
At the begining of winding, fix the interlayer paper and carrier,
and the reel core and paper with tape respectively.
- 2) Number of terminals
2500 terminals per reel.
- 3) Shortage
Max 20 missing terminal per reel.
Max 4 missing terminals per shortage. Min 6 terminals or more per carrier.
- 4) Reel dimensions & withdrawal direction



5) Storage state diagram



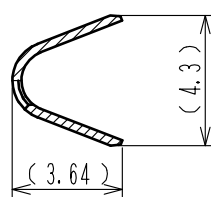
A-A



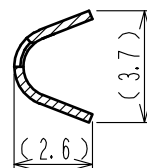
B-B



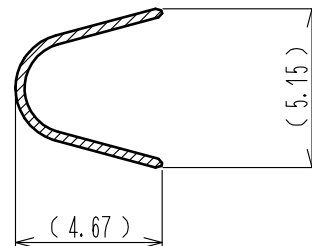
C-C



D-D



E-E



1	COPPER ALLOY	TIN PLATING	3	COPPER ALLOY	TIN PLATING
NO.	MATERIAL	FINISH . REMARKS	2	PPS	BLACK
UNITS mm		SCALE 4 : 1	COUNT 1	DESCRIPTION OF REVISIONS DIS-T-00005803	DESIGNED NK. IKUTA
HIROSE ELECTRIC CO., LTD.		APPROVED : KI. HIROKAWA	20180324	DRAWING NO.	EDC-373850-00-00
		CHECKED : KI. HIROKAWA	20180324	PART NO.	GT43-2428/1. 6-2. 9SCF
		DESIGNED : NK. IKUTA	20180324	CODE NO.	CL753-1003-0-00
		DRAWN : DS. HIROWATARI	20180320		
					20200306