

Jan.1.2025 Copyright 2025 HIROSE ELECTRIC CO., LTD. All Rights Reserved.  
 In case of consideration for using Automotive equipment / device which demand high reliability, kindly contact our sales window correspondents.

ELV. RoHS COMPLIANT

Delete pages 2-5

PACKING STYLE

PLASTICS BOARD

PP BAND

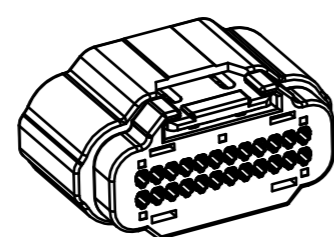
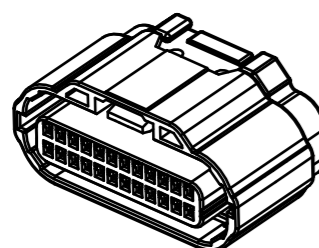
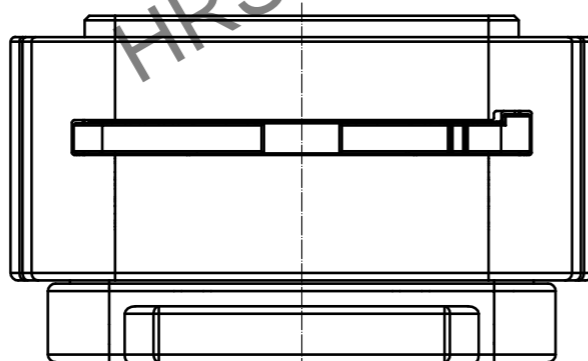
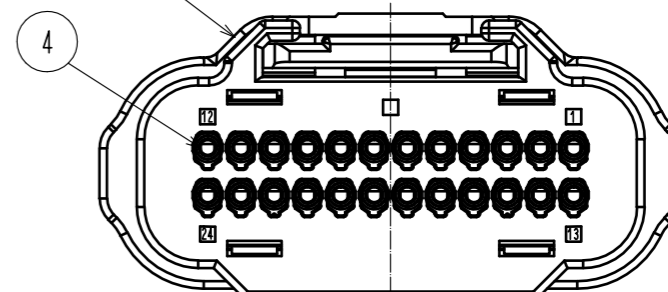
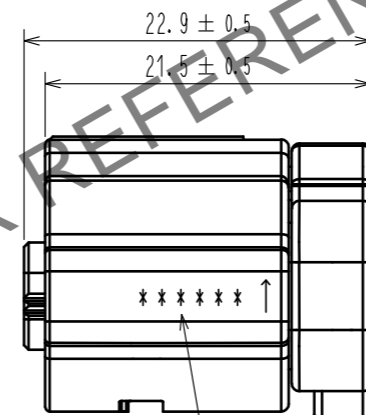
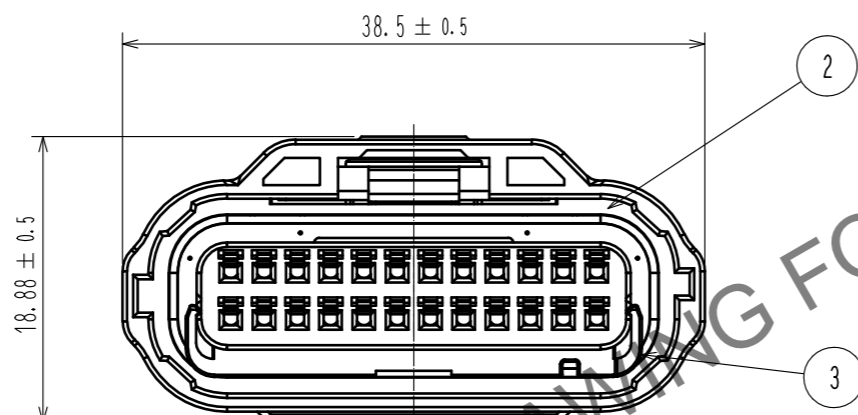
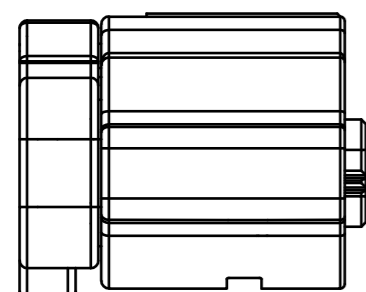
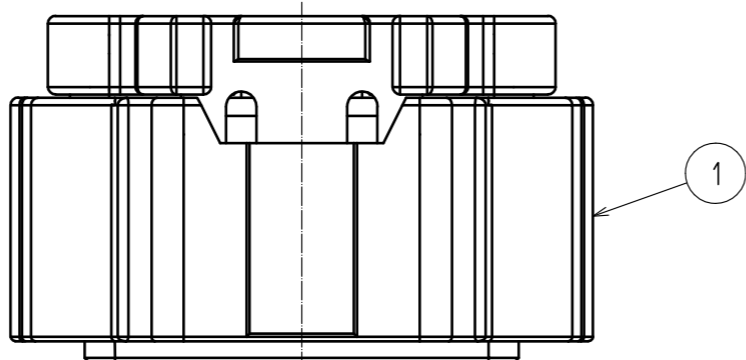
CARDBOARD BOX (K-60)

LABEL

(495)

(315)

(200)



- NOTE 1. APPLICABLE MATING CONNECTOR : ZE064W-24DP-HU/R(A)  
 2. THE APPLICABLE PARTS ARE AS FOLLOWS.  
 CRIMP CONTACT : ZE064-2022SCF  
 WATERPROOF CAP : ZE064W-WCP(2022)  
 3. MAXIMUM NUMBER OF PRODUCT PER BOX : 55 PCS PER TRAY × 5 LAYERS = 275 PCS.  
 PUT AN EMPTY TRAY ON THE TOP ROW.  
 4. BEFORE USE, BE SURE TO REFER TO THE INSTRUCTION MANUAL ETAD-T0644-00.

3	PA	BEIGE, UL94 V-0							
2	SILICONE	RED, OIL BLEED	5	PBT	GRAY, UL94 V-0				
1	PA	BLACK, UL94 V-0		4	SILICONE	RED, OIL BLEED			
NO.	MATERIAL	FINISH, REMARKS	NO.	MATERIAL	FINISH, REMARKS				
UNITS	mm	SCALE	2 : 1	COUNT	4	DESCRIPTION OF REVISIONS	DESIGNED	CHECKED	DATE
						DIS-T-00016740	TY. MOGI	AH. EDASHIGE	20230124
APPROVED : HK. UMEHARA		20180613		DRAWING NO.		EDC-374259-00-00			
CHECKED : HH. TSUKUMO		20180613		PART NO.		ZE064W-24DS-HU/R(A)			
DESIGNED : AS. SHIBAHARA		20180613		CODE NO.		CL0753-2005-0-00			
DRAWN : GYEONGMIN LEE		20180613							