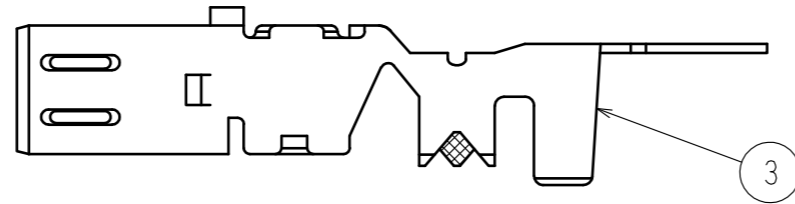
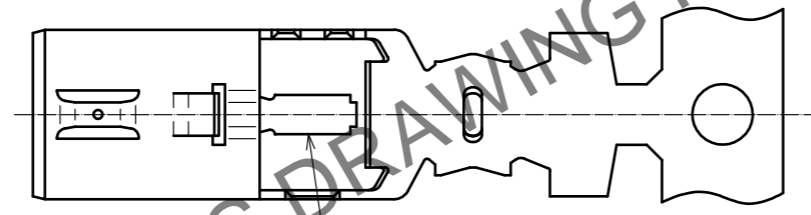
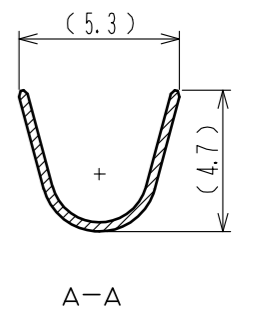
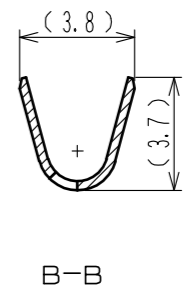
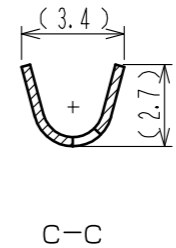
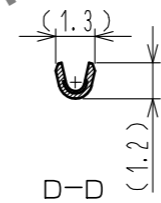
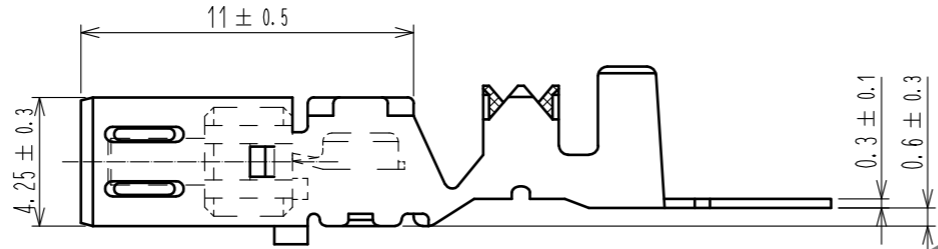
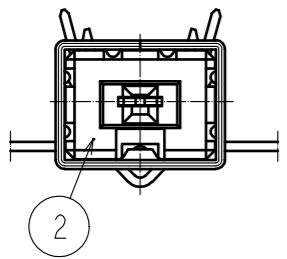
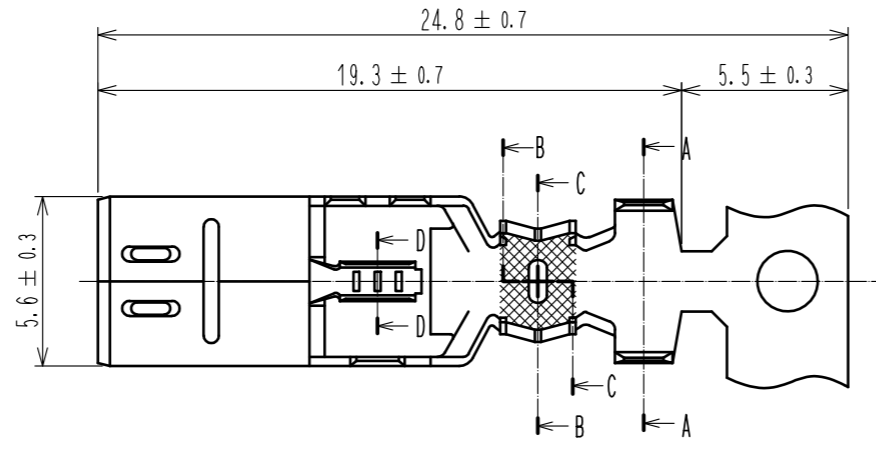


Apr.1.2026 Copyright 2026 HIROSE ELECTRIC CO., LTD. All Rights Reserved.
 In case of consideration for using Automotive equipment / device which demand high reliability, kindly contact our sales window correspondents.

ELV. RoHS COMPLIANT



NOTES
 1 PER REEL : 3000 CONTACTS
 2 THIS REEL DIAMETER SHALL BE $\phi 750$, AND CRIMPING MACHINE NEEDS ADDITIONAL PARTS AS CM 105/RS-GT.

2	PBT	UL94HB, DARK GRAY			
1	COPPER ALLOY	TIN PLATING	3	COPPER ALLOY	TIN PLATING
NO.	MATERIAL	FINISH . REMARKS	NO.	MATERIAL	FINISH . REMARKS
UNITS		SCALE	COUNT	DESCRIPTION OF REVISIONS	
mm		1 : 1		DESIGNED	CHECKED
HRS HIROSE ELECTRIC CO., LTD.		APPROVED : KI. HIROKAWA	20200327	DRAWING NO. EDC-165699-55-00	
		CHECKED : MO. OKADA	20200327	PART NO. GT13-30/1.6-2.9SCF(55)	
		DESIGNED : NK. IKUTA	20200327	CODE NO. CL763-0012-0-55	
		DRAWN : YK. MITSUISHI	20200318	1/1	