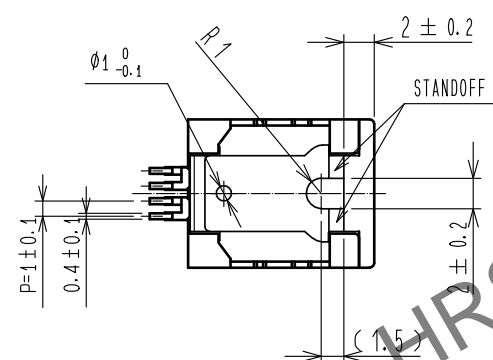
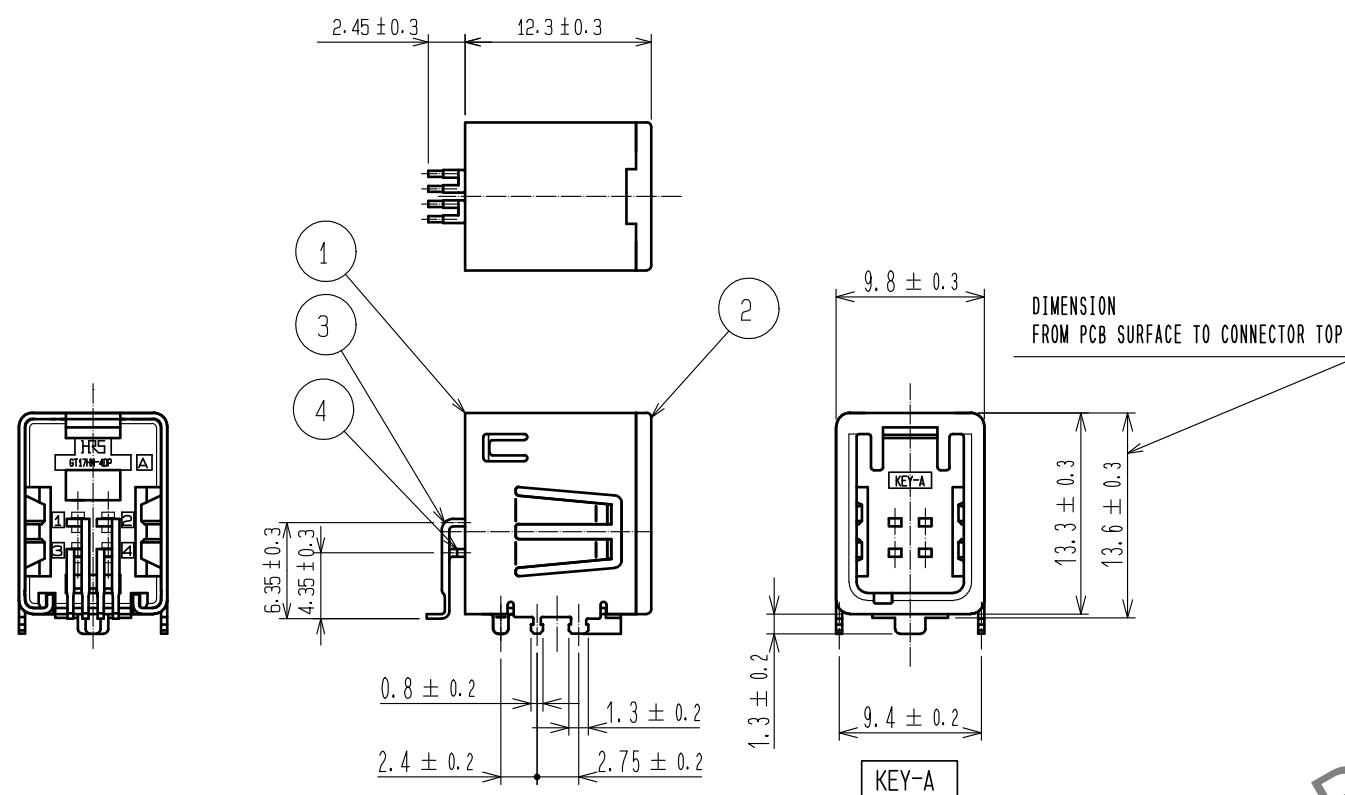
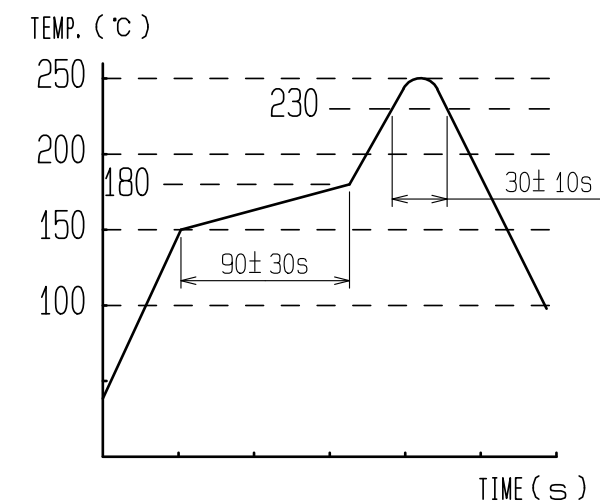
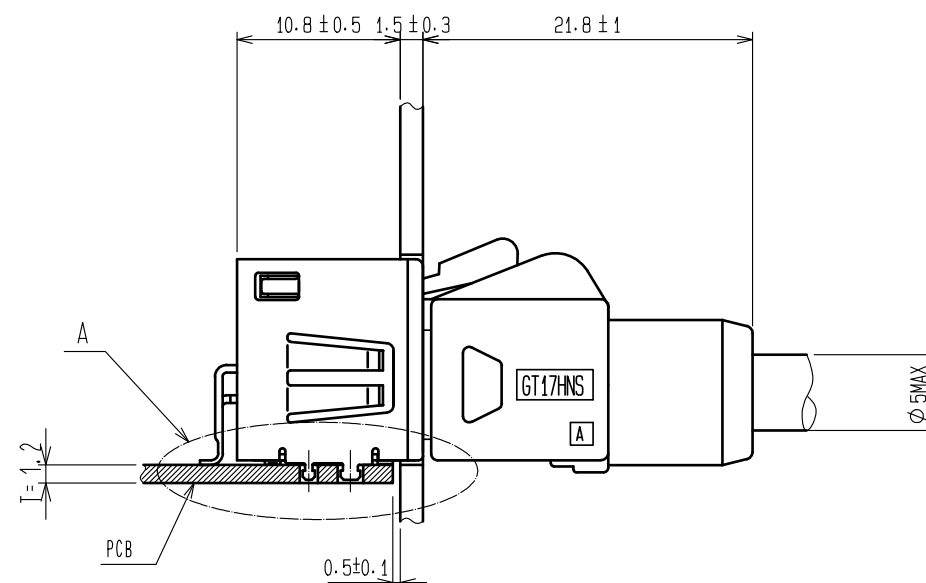
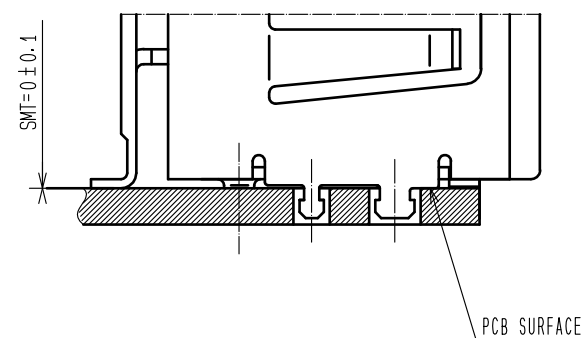


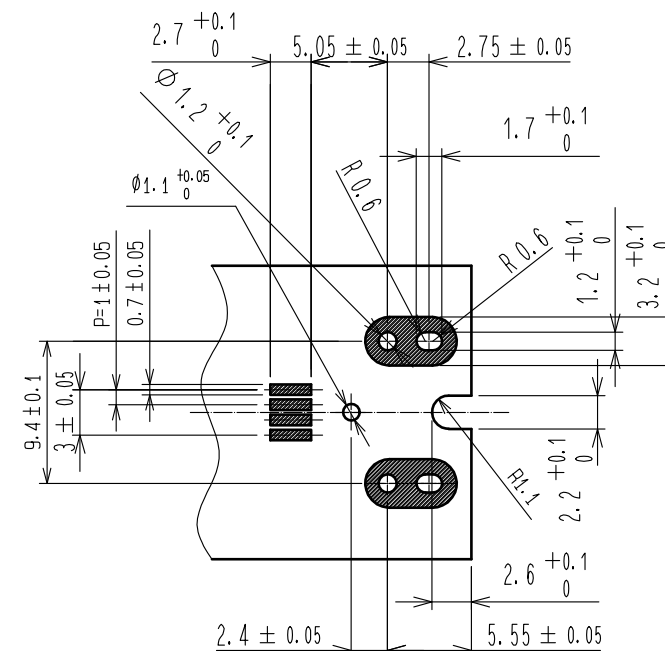
6) FOR THE PREVENTION EXCESSIVE STRESS FOR CONNECTOR AND PCB, WE RECOMMEND ADDITIONAL SUPPORT MECHANISM IF THE FLANGE WAS ELIMINATED.



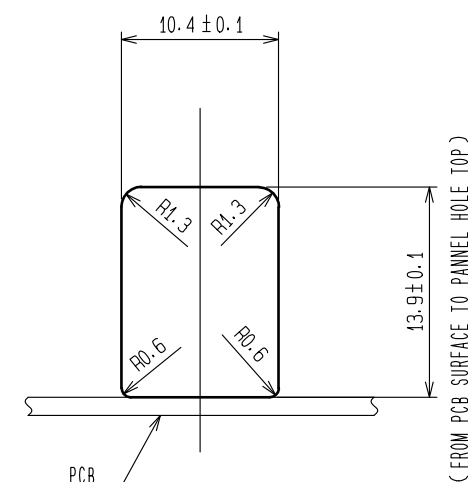
MATED CONNECTORS

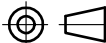





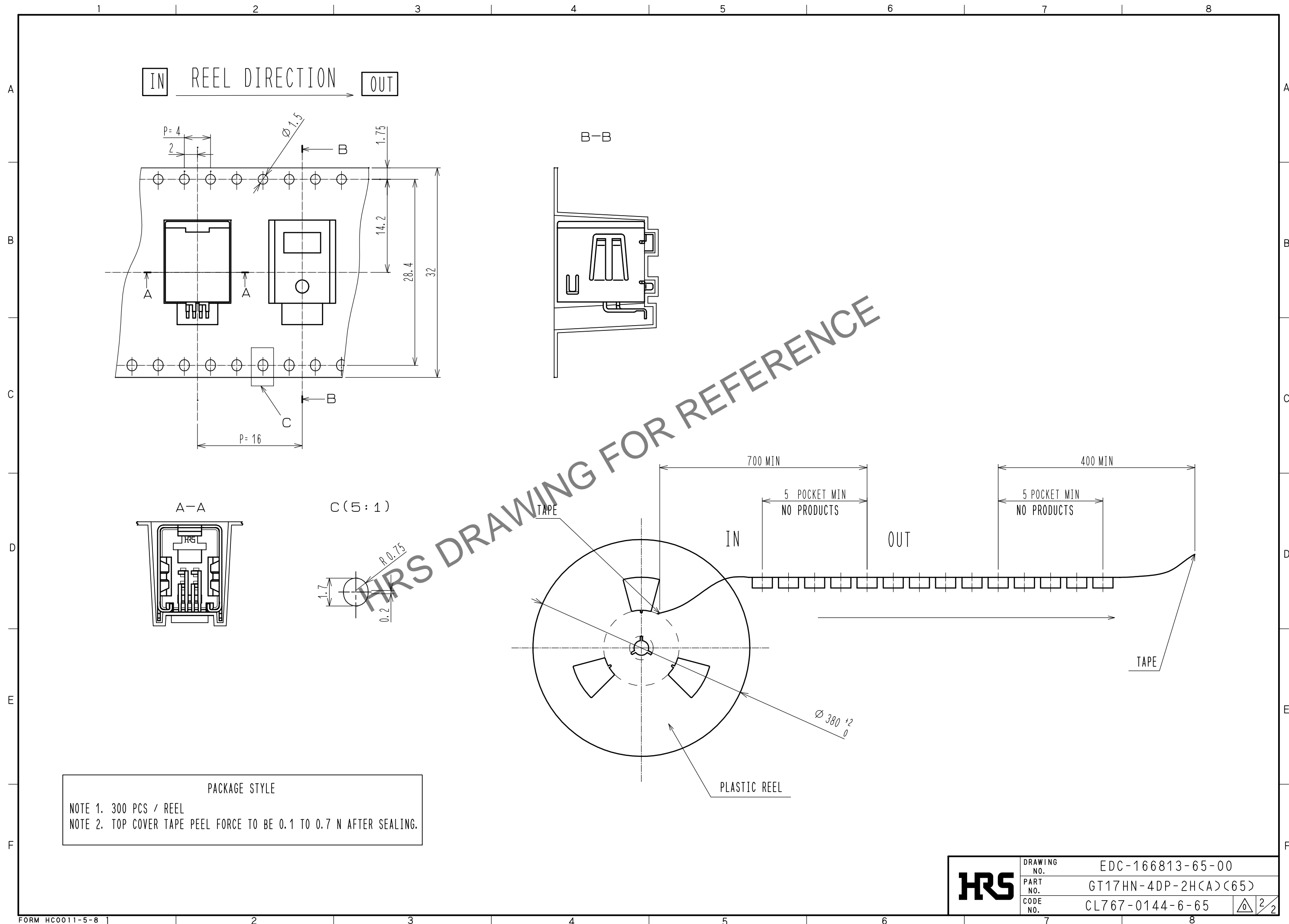
RECOMMENDE PCB LAYOUT




PANNEL LAYOUT



2	PPS	BROWN	4	BRASS	TIN PLATING				
1	COPPER ALLOY	TIN PLATING	3	BRASS	TIN PLATING				
NO.	MATERIAL	FINISH . REMARKS		NO.	MATERIAL	FINISH . REMARKS			
UNITS mm		SCALE 2 : 1		COUNT	DESCRIPTION OF REVISIONS		DESIGNED	CHECKED	DATE
 HIROSE ELECTRIC CO., LTD.	APPROVED : KI. HIROKAWA		20200326		DRAWING NO.		EDC-166813-65-00		
	CHECKED : EJ. WAKATSUKI		20200325		PART NO.		GT17HN-4DP-2H(A)(65)		
	DESIGNED : TS. KUBOTA		20200325		PART NO.				
	DRAWN : YK. MITSUISHI		20200219		CODE NO.		CL767-0144-6-65		 1/



HRS	DRAWING NO. EDC-166813-65-00	
	PART NO. GT17HN-4DP-2H(A)(65)	
	CODE NO. CL767-0144-6-65	 2/2