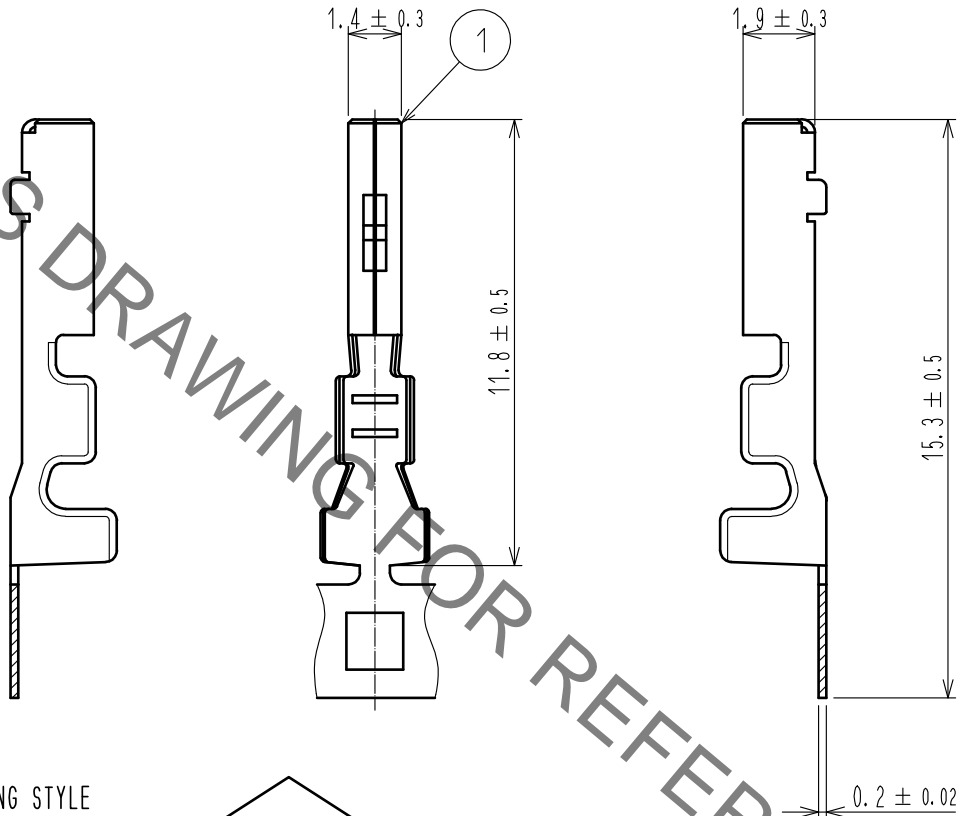
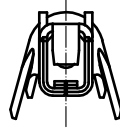
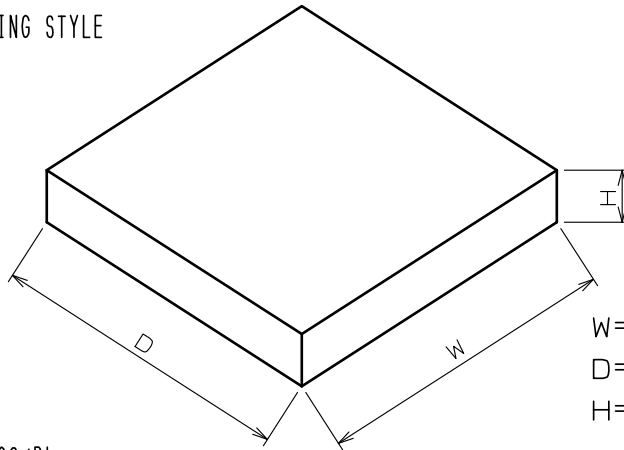


Jun.1.2022 Copyright 2022 HIROSE ELECTRIC CO., LTD. All Rights Reserved.
 In case of consideration for using Automotive equipment / device which demand high reliability, kindly contact our sales window correspondents.

ELV, RoHS COMPLIANT



PACKING STYLE



Note1. 10000PCS/RL

2. REGARDING HOW TO HANDLE THE PACKAGED PRODUCTS, PLEASE REFER TO THE ATAD-T0946-00「INSTRUCTION MANUAL FOR HANDLING OF REEL PACKAGING CONTAINING CRIMP TERMINALS」

1	COPPER ALLOY	TIN PLATED						
NO.	MATERIAL	FINISH	REMARKS	NO.	MATERIAL	FINISH	REMARKS	
UNITS mm		SCALE 5 : 1	COUNT 1	DESCRIPTION OF REVISIONS DIS-T-00013628		DESIGNED AN. SAIKI	CHECKED HH. TSUKUMO	DATE 20220524
HRS HIROSE ELECTRIC CO., LTD.	APPROVED	AR. SHIRAI	20110701	DRAWING NO.	EDC4-168756-00			
	CHECKED	TY. TAKAHASHI	20110630	PART NO.	GT25H-2024SCF			
	DESIGNED	TY. SAKASHITA	20110628	CODE NO.	CL0775-0039-6-00			
	DRAWN	TY. SAKASHITA	20110628					