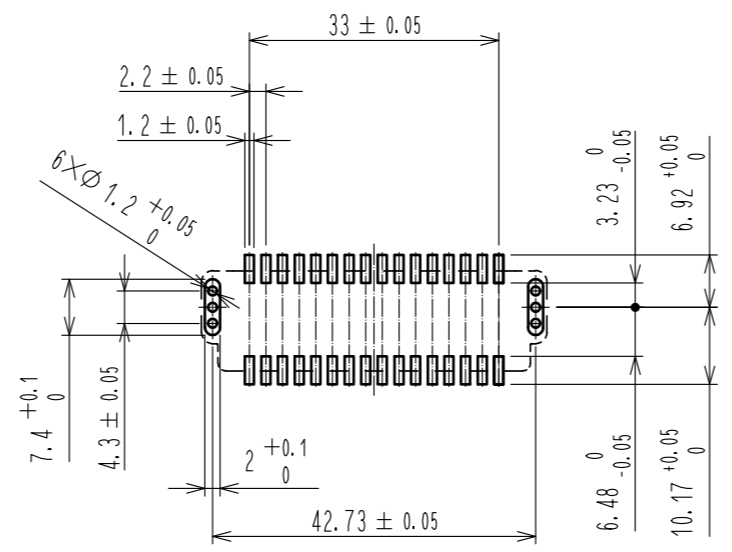
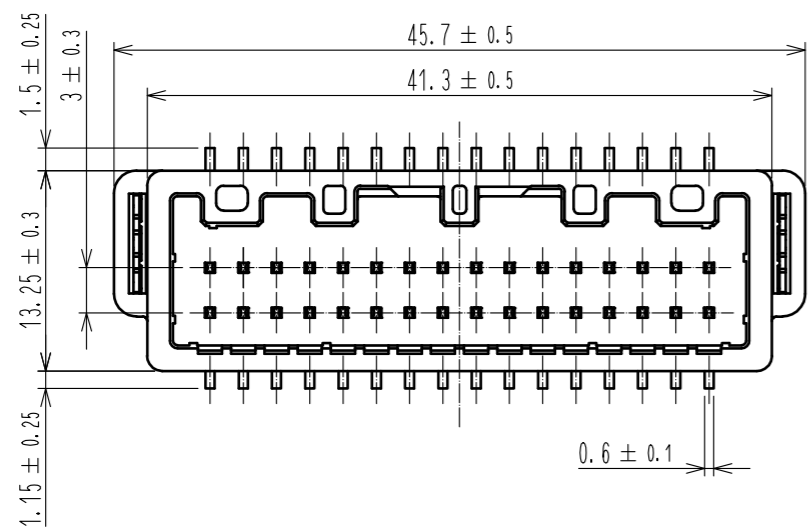


Mar.1.2024 Copyright 2024 HIROSE ELECTRIC CO., LTD. All Rights Reserved.  
In case of consideration for using Automotive equipment / device which demand high reliability, kindly contact our sales window correspondents.

ELV, RoHS COMPLIANT



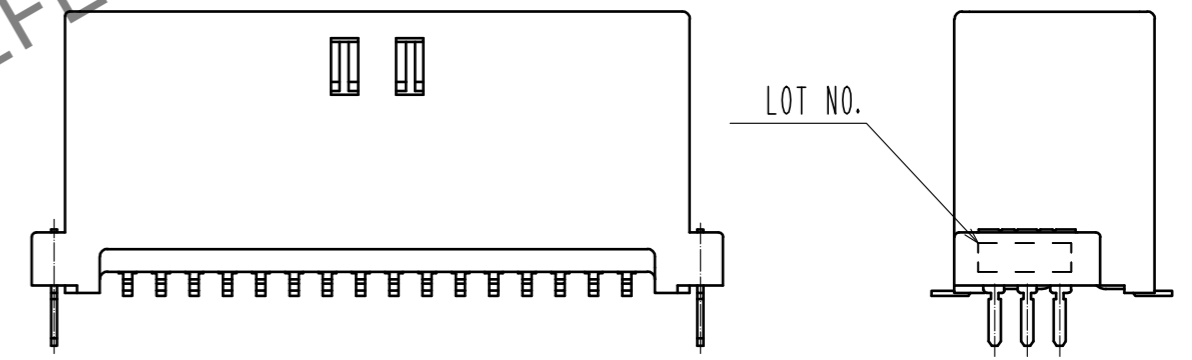
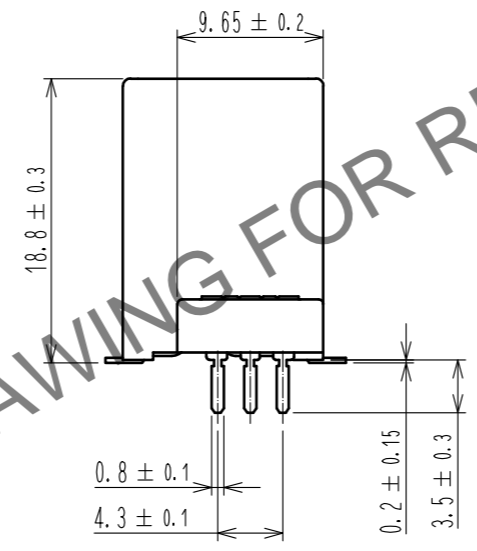
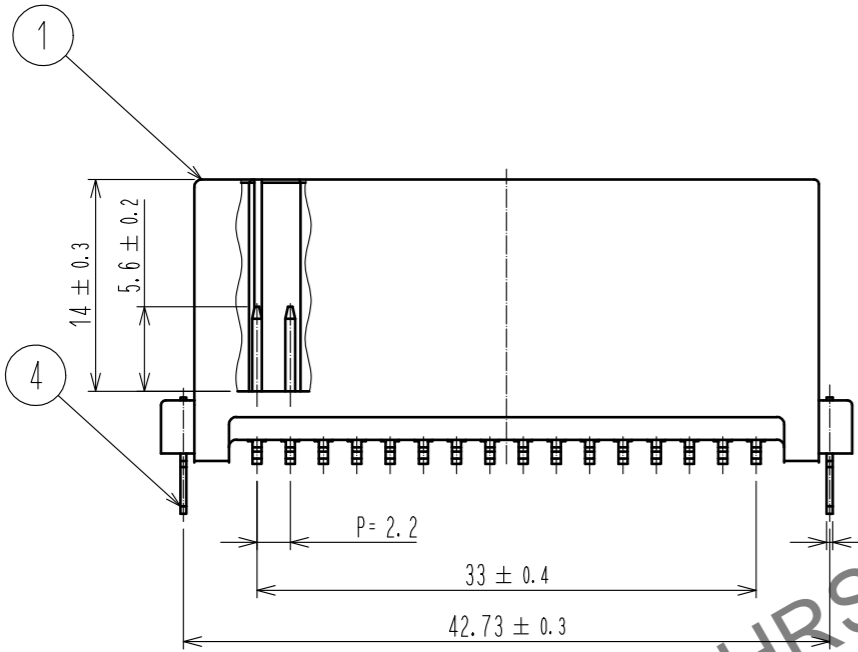
RECOMMENDED PCB PATTERN ( 1:1 )

TRAY PACKING SPECIFICATIONS

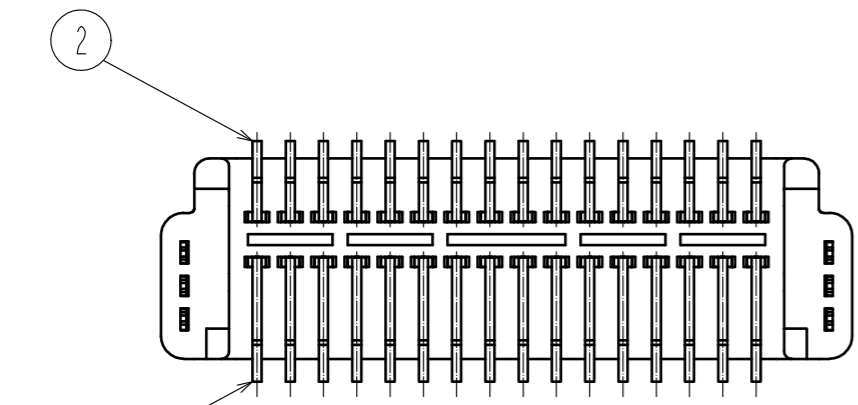
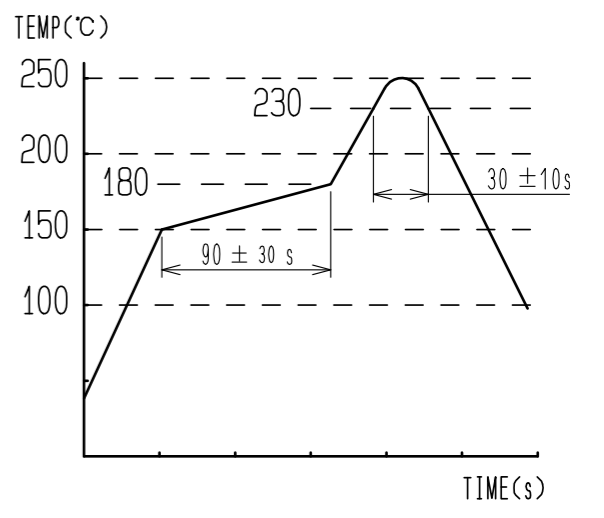
6 TRAYS STACKING.  
ODD NUMBER TRAYS AND EVEN NUMBER TRAYS ARE REVERSE DIRECTION.  
TOP TRAY IS EMPTY.

CARDBOARD PADS  
EMPTY TRAY  
PP BAND  
6 TRAYS  
CARTON  
240  
343  
133  
330  
55  
P=55  
225  
61.8  
P=41.8  
20PCS PER TRAY.

PACK QUANTITY: 100PCS PER CARTON.



- NOTE 1. RECOMMENDED TEMPERATURE PROFILE FOR REFLOW (REFER TO RIGHT FIG.)  
USED REFLOW SYSTEM : IR IN THE AIR OR NITROGEN  
NO. OF CYCLES : 2 MAX  
PEAK : 250°C  
OVER 230°C : 20~40s  
PREHEAT : 150~180°C  
60~120s
2. TEMPERATURE FOR SOLDERING IRON : 280~300°C WITHIN 2s
3. CO-PLANARITY SHALL BE 0.1mm MAX.
4. RECOMMENDED PCB THICKNESS IS 1.6mm.
5. RECOMMENDED SOLDER THICKNESS IS 0.15mm.



2	BRASS	TIN PLATING T=0.64	4	BRASS	TIN PLATING T=0.4
1	PPS	BLACK	3	BRASS	TIN PLATING T=0.64
NO.	MATERIAL	FINISH . REMARKS	NO.	MATERIAL	FINISH . REMARKS
UNITS mm		SCALE 2 : 1	COUNT 	DESCRIPTION OF REVISIONS	DESIGNED
<b>HRS</b> HIROSE ELECTRIC CO., LTD.		APPROVED : HK. UMEHARA 20200928	DRAWING NO. EDC-169260-60-00		
		CHECKED : HH. TSUKUMO 20200927	PART NO. GT25H-32DP-2.2V(60)		
		DESIGNED : DONGCHAN KIM 20200924	CODE NO. CL775-0053-7-60		
		DRAWN : AN. SAIKI 20200917			