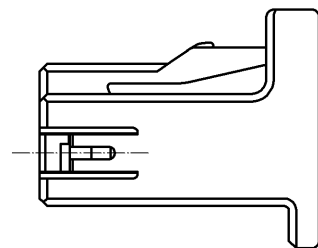
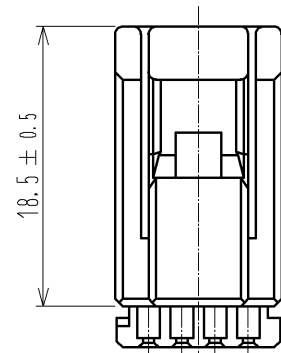
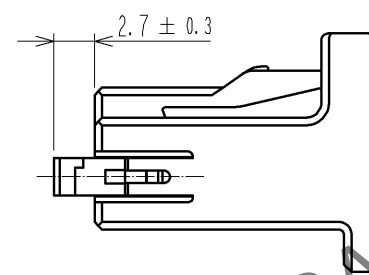
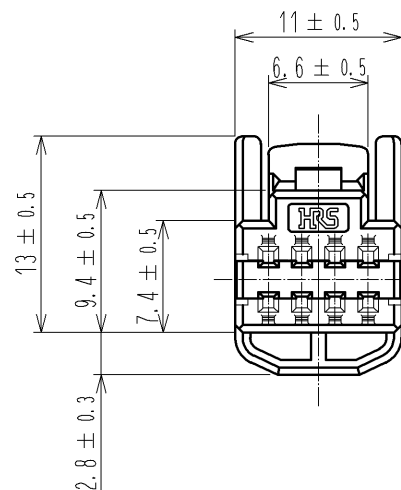


Mar.1.2024 Copyright 2024 HIROSE ELECTRIC CO., LTD. All Rights Reserved.  
In case of consideration for using Automotive equipment / device which demand high reliability, kindly contact our sales window correspondents.

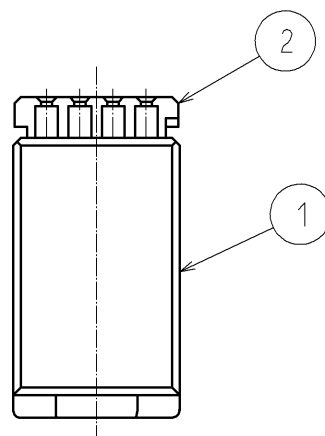
ELV, RoHS COMPLIANT



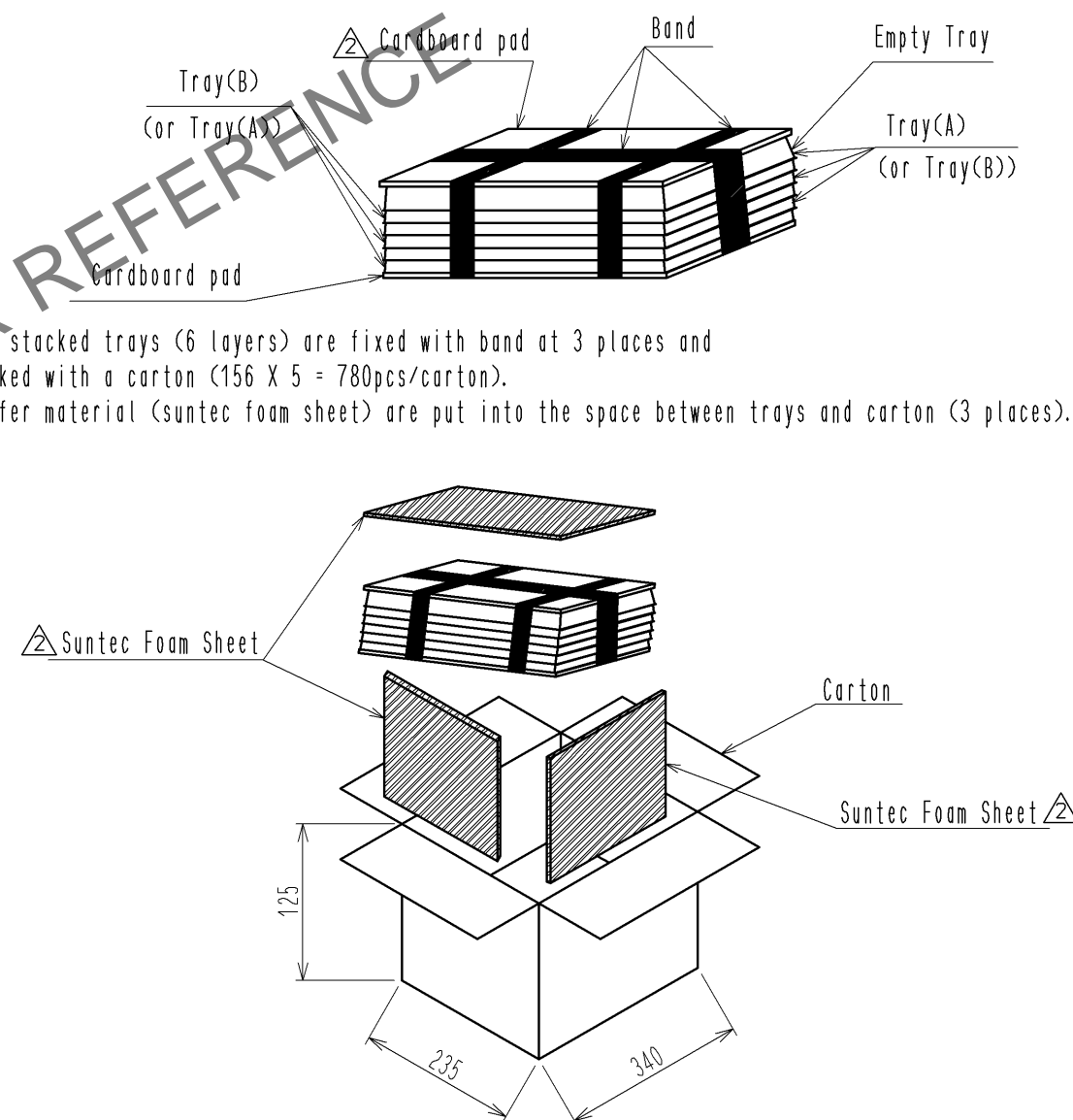
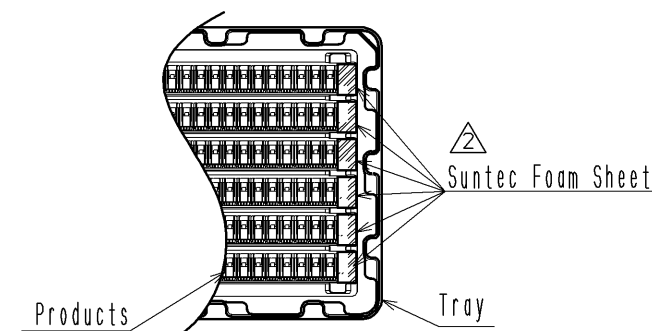
2 RETAINER FIXED



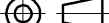



1 RETAINER PRESET



- NOTES) 1 This product consists of a housing and a preset retainer.  
2 Fix the retainer to the prescribed position after inserting all contacts into the housing.  
3. The specification of packing:  
(1) Products are packed using tray (A) and tray (B) (156pcs/tray).  
2 (2) Buffer material (suntec foam sheet) are put into the space between products and trays.  
(3) Tray (A) and tray (B) are lapped over each other alternately in six layers, and the top tray is an empty tray.  
2 (4) A cardboard pad 340-235 are put each under the bottom tray and on the upper tray.



- (5) The stacked trays (6 layers) are fixed with band at 3 places and packed with a carton (156 X 5 = 780pcs/carton).  
2 (6) Buffer material (suntec foam sheet) are put into the space between trays and carton (3 places).

1	PPE	BLACK		2	PBT	DARK GRAY		
NO.	MATERIAL	FINISH . REMARKS		NO.	MATERIAL	FINISH . REMARKS		
UNITS mm		SCALE 2 : 1	COUNT	DESCRIPTION OF REVISIONS		DESIGNED	CHECKED	DATE
			 7	DIS-T-003869		Chinaik. Ng	TK. SHISHIKURA	14. 04. 25
			APPROVED :NH. NAKATA 13. 06. 18		DRAWING NO. EDC3-169396-00			
			CHECKED :TK. SHISHIKURA 13. 06. 18		PART NO. GT25-8DS-HU/R			
			DESIGNED :Chinaik. Ng 13. 06. 18		CODE NO. CL775-0059-3-00			
 HIROSE ELECTRIC CO., LTD.		DRAWN :Chinaik. Ng 13. 06. 18		 1				