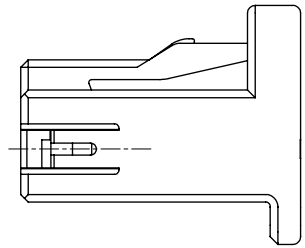
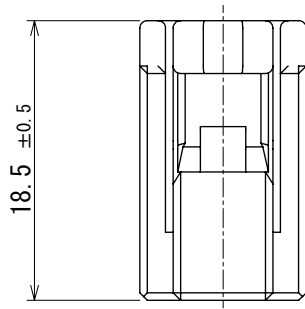


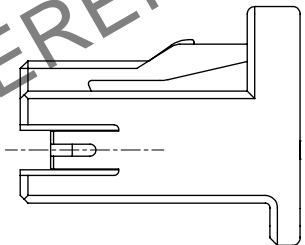
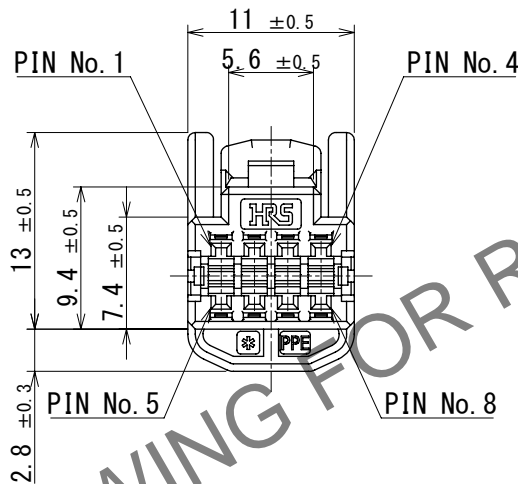
Mar.1.2024 Copyright 2024 HIROSE ELECTRIC CO., LTD. All Rights Reserved.  
In case of consideration for using Automotive equipment / device which demand high reliability, kindly contact our sales window correspondents.

ELV, RoHS COMPLIANT

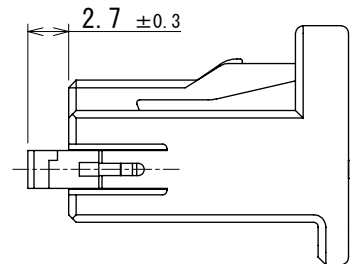
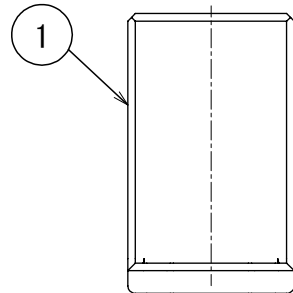


RETAINER COMPLETELY ASSEMBLED CONDITION

PIN No. DESCRIPTION



RETAINER PRESET CONDITION



- NOTE. 1 Use this product with retainer GT25-8DS-R preset.  
Retainer GT25-8DS-R product No. : CL0775-0065-6  
2 RETAINER TO BE COMPLETELY ASSEMBLED INTO POSITION AFTER CONTACT IS INSERTED.  
3 PLEASE REFER TO INSTRUCTION SHEET ETAD-T0329-00 BEFORE USE.

1	PPE	BLACK						
NO.	MATERIAL	FINISH	REMARKS	NO.	MATERIAL	FINISH	REMARKS	
UNITS mm		SCALE 2:1	COUNT 2	DESCRIPTION OF REVISIONS DIS-T-00018642		DESIGNED AN. SAIKI	CHECKED TY. MOGI	DATE 2023. 07. 27
HIROSE ELECTRIC CO., LTD.		APPROVED : HK. UMEHARA		2020. 09. 02	DRAWING NO. EDC-169599-00-00			
		CHECKED : HH. TSUKUMO		2020. 09. 02	PART NO. GT25-8DS-HU			
		DESIGNED : DONGCHAN KIM		2020. 09. 01	CODE NO. CL0775-0064-3-00			
		DRAWN : AN. SAIKI		2020. 08. 28				