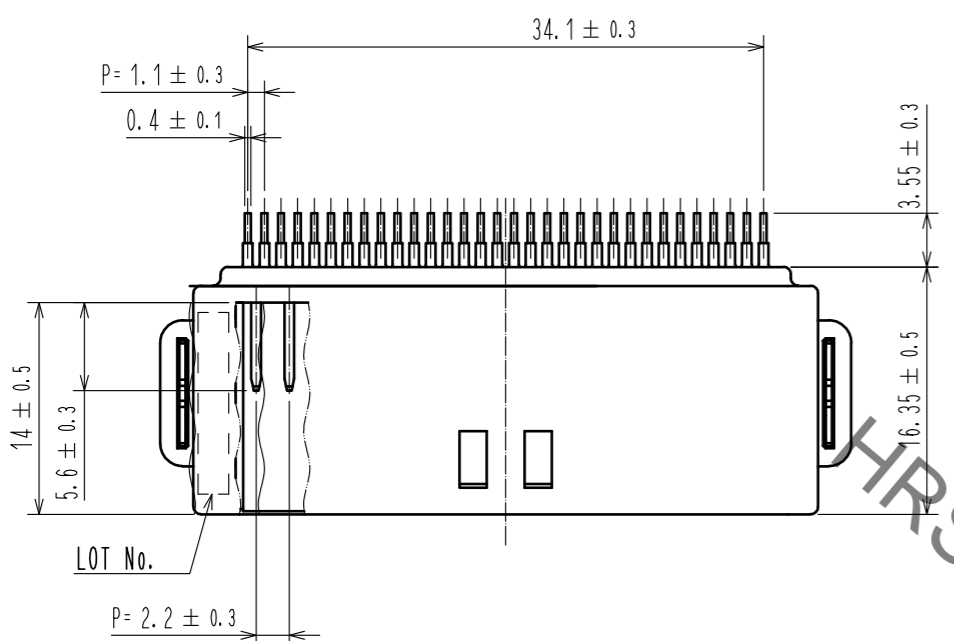
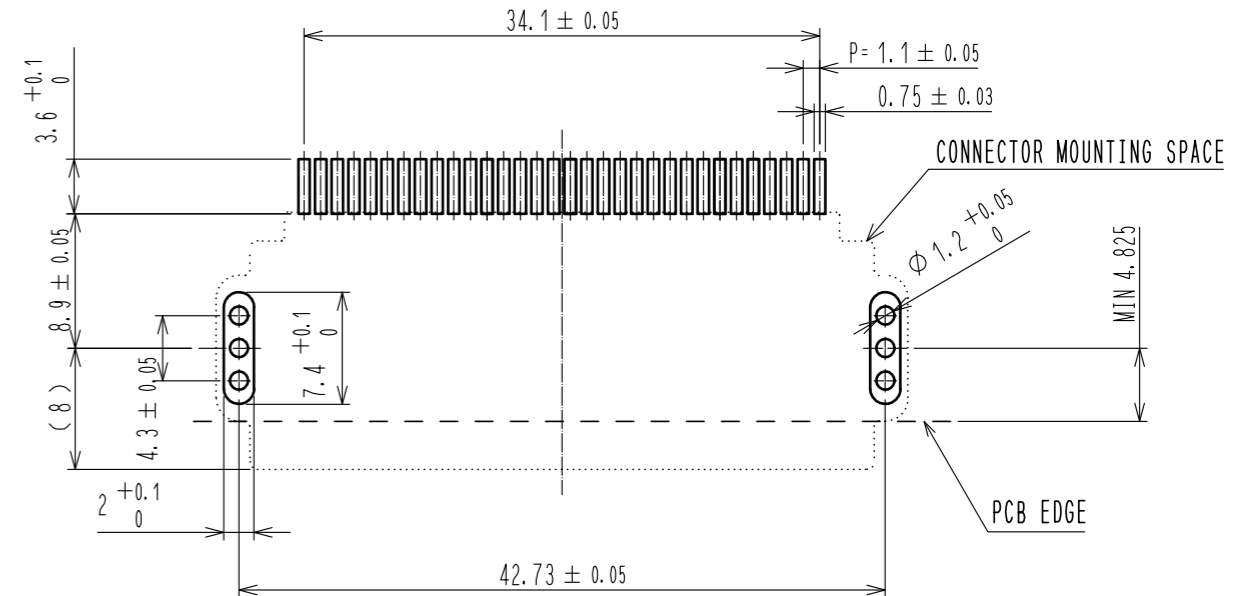


Dec.1.2021 Copyright 2021 HIROSE ELECTRIC CO., LTD. All Rights Reserved.
In case of consideration for using Automotive equipment / device which demand high reliability, kindly contact our sales window correspondents.

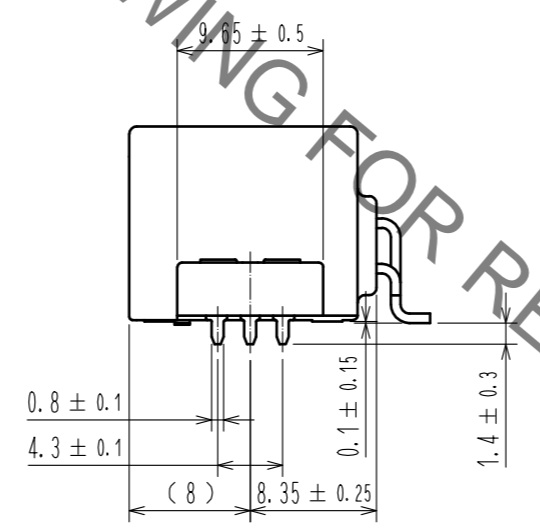
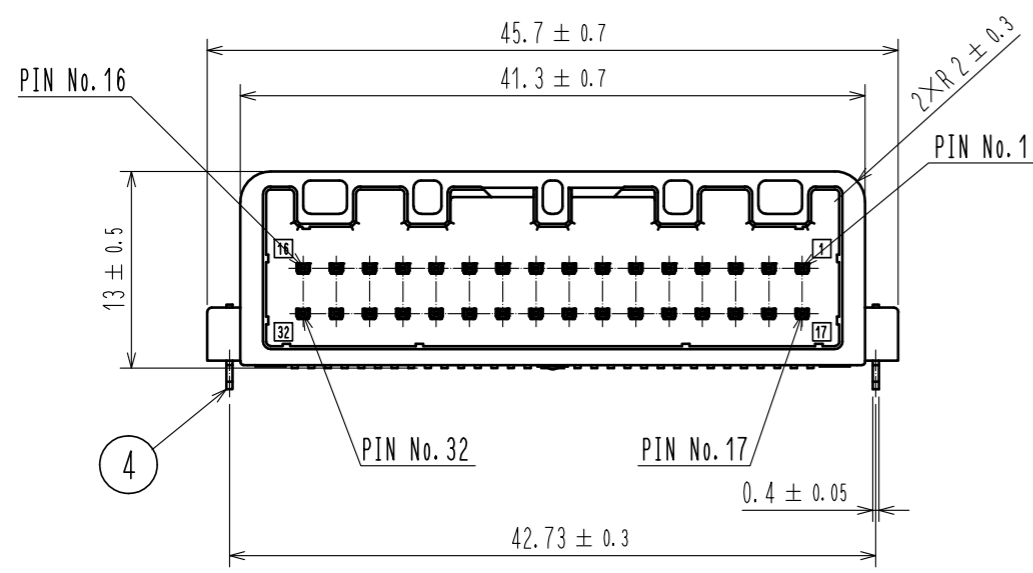
ELV, RoHS COMPLIANT



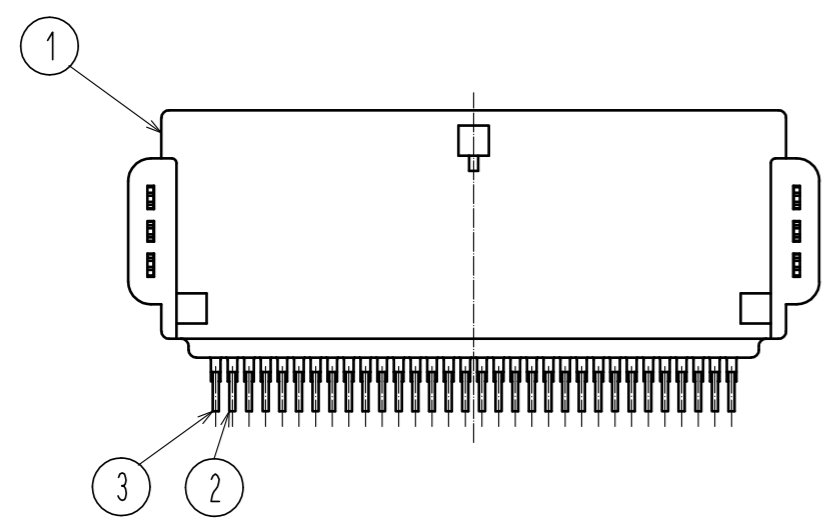
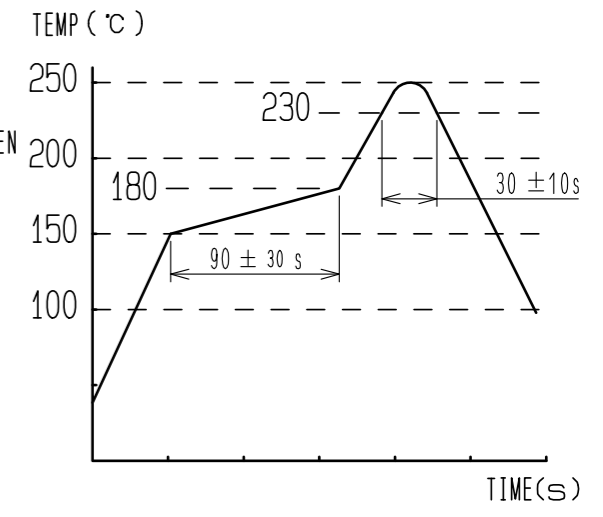
PIN ASSIGNMENT
16 32 15 31 14 30 13 29 12 28 11 27 10 26 9 25 8 24 7 23 6 22 5 21 4 20 3 19 2 18 1 17



RECOMMENDED PCB PATTERN



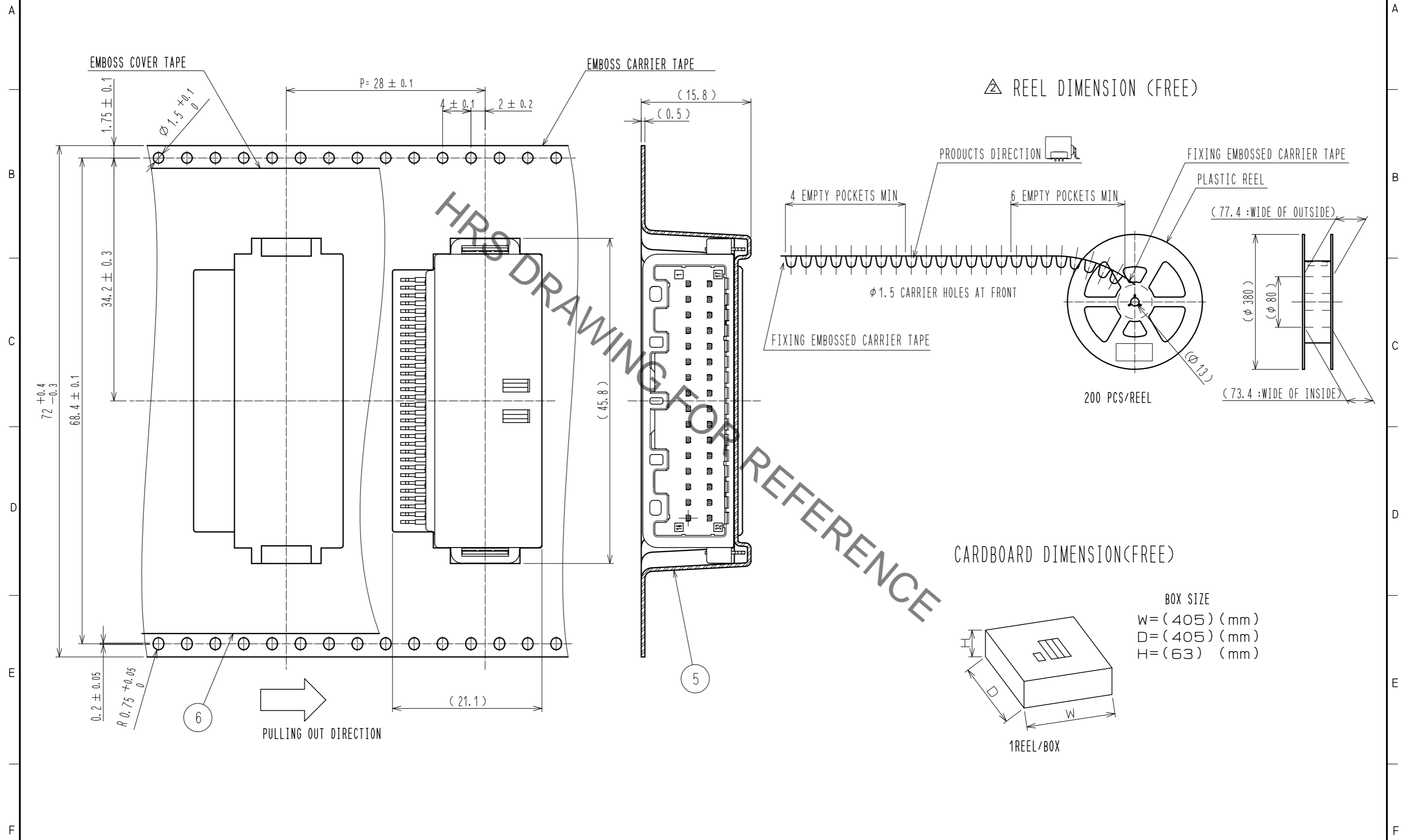
- NOTE 1 RECOMMENDED TEMPERATURE PROFILE FOR REFLOW (REFER TO RIGHT FIG.) USED REFLOW SYSTEM
- NO. OF CYCLES : 2 MAX
 - PEAK : 250°C
 - OVER 230°C : 20~40s
 - PREHEAT : 150~180°C
 - : 60~120s
- 2 TEMPERATURE FOR SOLDERING IRON : 280~300°C WITHIN 2s
- 3 CO-PLANARITY OF PIN SHALL BE 0.1mm MAX.
- 4 RECOMMENDED PCB THICKNESS IS 1.6mm.
- 5 RECOMMENDED SOLDER THICKNESS IS 0.15mm.



3	BRASS	TIN PLATED	6	PET	
2	BRASS	TIN PLATED	5	PS	
1	PA	BLACK	4	BRASS	TIN PLATED
NO.	MATERIAL	FINISH . REMARKS	NO.	MATERIAL	FINISH . REMARKS
UNITS	mm	SCALE	2 : 1	COUNT	1
DESCRIPTION OF REVISIONS			DESIGNED	CHECKED	DATE
DIS-T-00006626			DONGCHAN KIM	HH. TSUKUMO	20200902
APPROVED : AR. SHIRAI			20180530	DRAWING NO. EDC-361159-10-00	
CHECKED : HS. OZAWA			20180530	PART NO. GT25H2-32DP-2. 2H<10>	
DESIGNED : YT. HAYAKAWA			20180530	CODE NO. CL775-0086-6-10	
DRAWN : DS. HIROWATARI			20180529		

Dec.1.2021 Copyright 2021 HIROSE ELECTRIC CO., LTD. All Rights Reserved.
 In case of consideration for using Automotive equipment / device which demand high reliability, kindly contact our sales window correspondents.

PACKAGING SPECIFICATION



REEL DIMENSION (FREE)

CARDBOARD DIMENSION(FREE)

BOX SIZE
 W=(405) (mm)
 D=(405) (mm)
 H=(63) (mm)

HRS	DRAWING NO.	EDC-361159-10-00	
	PART NO.	GT25H2-32DP-2.2H<10>	
	CODE NO.	CL775-0086-6-10	2/2