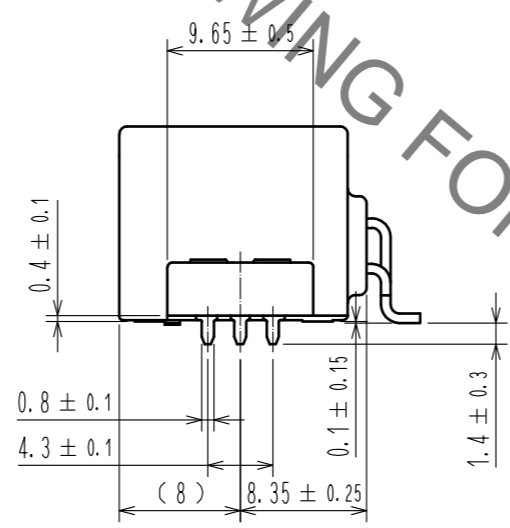
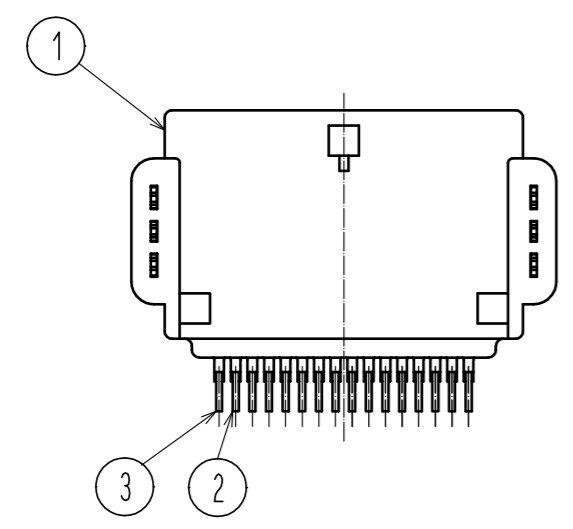
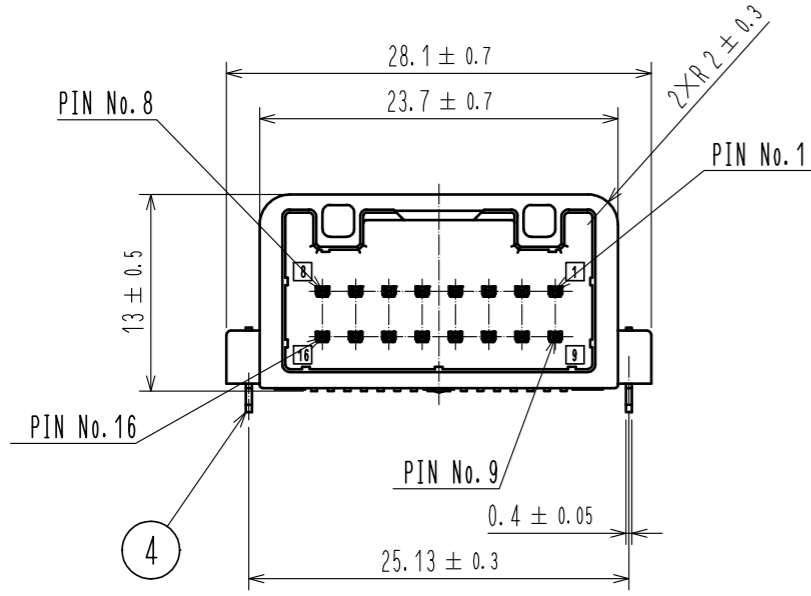
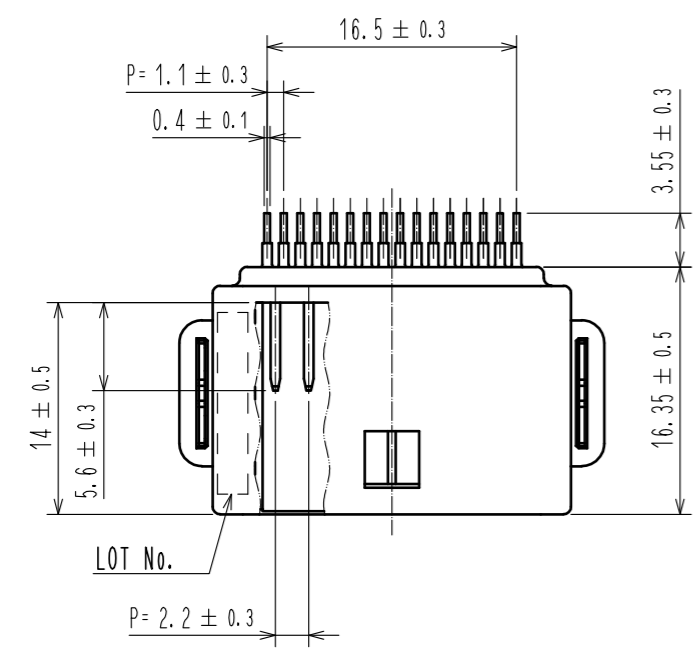
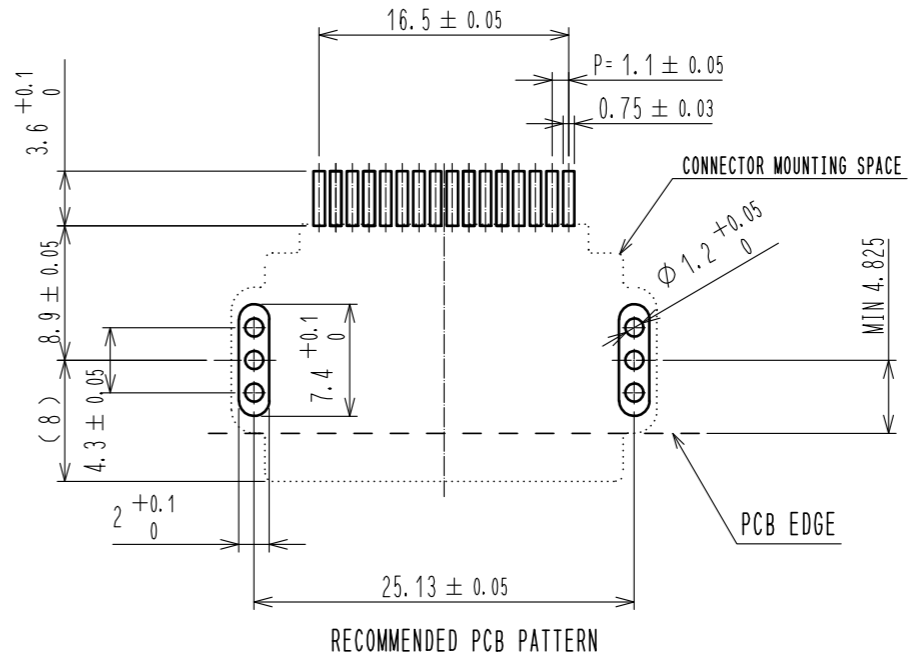


Jan.1.2022 Copyright 2022 HIROSE ELECTRIC CO., LTD. All Rights Reserved.
In case of consideration for using Automotive equipment / device which demand high reliability, kindly contact our sales window correspondents.

ELV. RoHS COMPLIANT

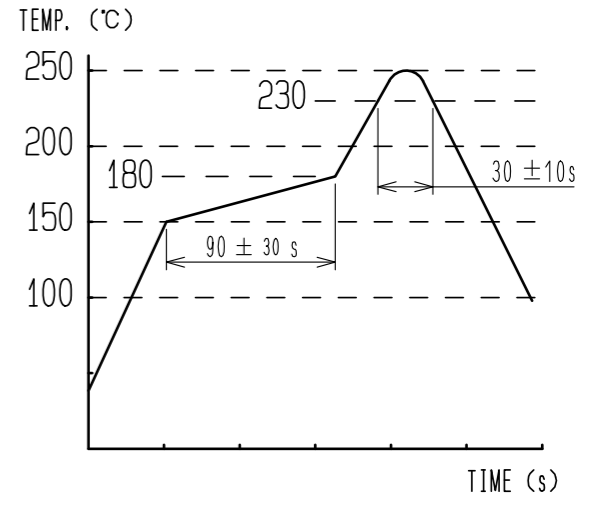


PIN ASSIGNMENT
8 16 7 15 6 14 5 13 4 12 3 11 2 10 1 9



HRS DRAWING FOR REFERENCE

- NOTE1. RECOMMENDED TEMPERATURE PROFILE FOR REFLOW (REFER TO RIGHT FIG.) USED REFLOW SYSTEM
 : IR IN THE AIR OR NITROGEN
 NO. OF CYCLES : 2 MAX
 PEAK : 250°C
 OVER 230°C : 20~40s
 PREHEAT : 150~180°C
 60~120s
2. TEMPERATURE FOR SOLDERING IRON : 280~300°C WITHIN 2s
3. LEAD CO-PLANARITY SHALL BE 0.1mm MAX.
4. RECOMMENDED PCB THICKNESS IS 1.6mm
5. RECOMMENDED SOLDER THICKNESS IS 0.15mm.



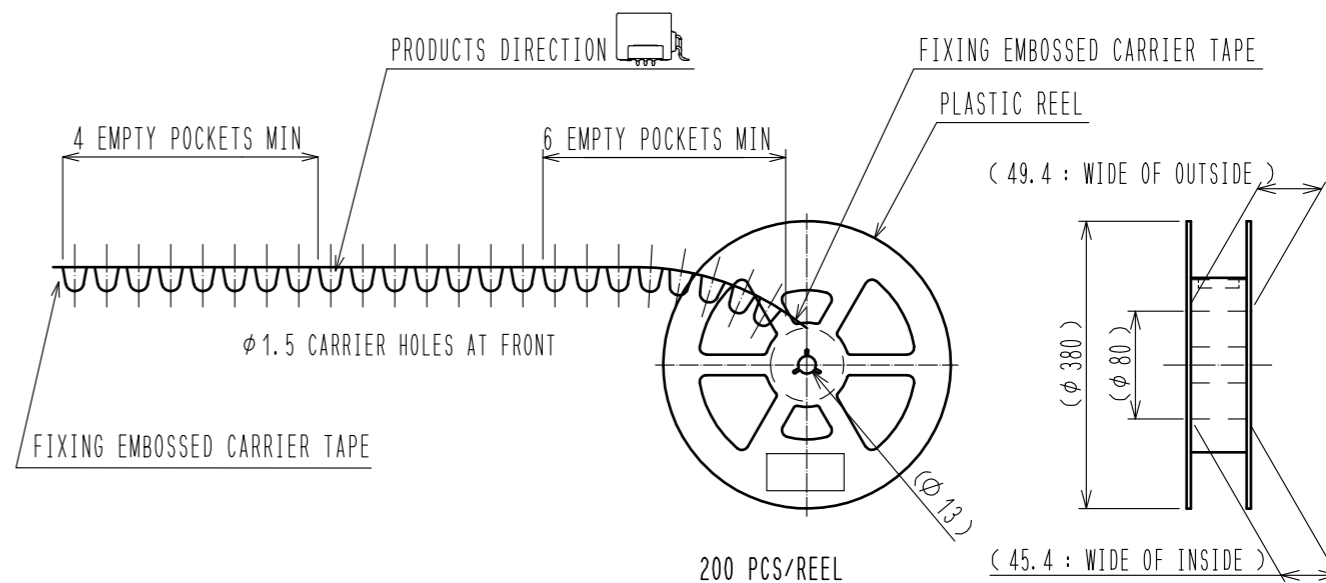
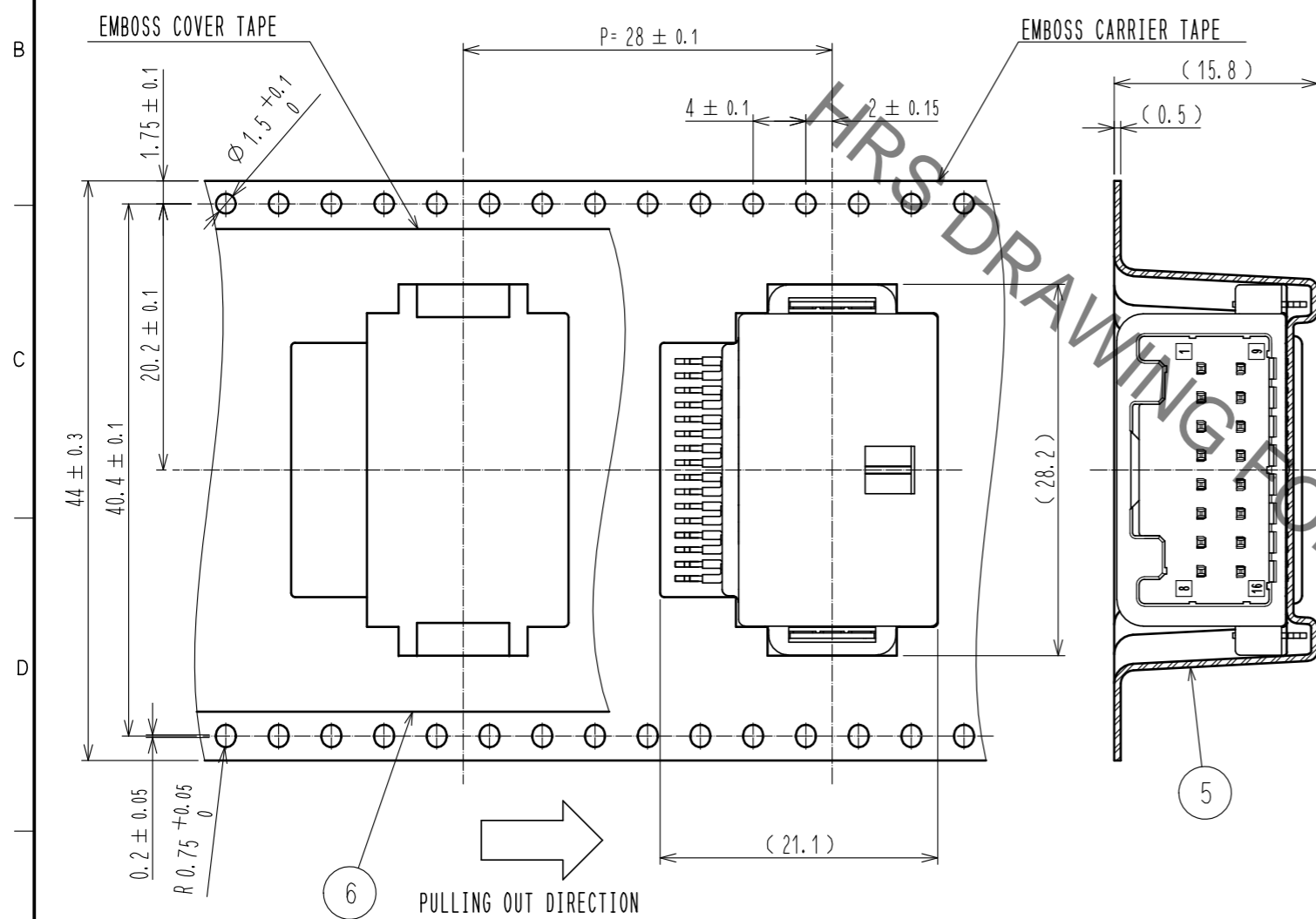
3	BRASS	TIN PLATED	6	PET	
2	BRASS	TIN PLATED	5	PS	
1	PA	BLACK	4	BRASS	TIN PLATED
NO.	MATERIAL	FINISH . REMARKS	NO.	MATERIAL	FINISH . REMARKS
UNITS	mm	SCALE	2 : 1	COUNT	1
DESCRIPTION OF REVISIONS			DESIGNED	CHECKED	DATE
DIS-T-00006626			DONGCHAN KIM	HH. TSUKUMO	20200902
APPROVED : AR. SHIRAI			20180622	DRAWING NO. EDC-361741-10-00	
CHECKED : HS. OZAWA			20180622	PART NO. GT25H2-16DP-2. 2H<10>	
DESIGNED : YT. HAYAKAWA			20180622	CODE NO. CL775-0089-4-10	
DRAWN : GYEONGMIN LEE			20180622	1/2	

Jan.1.2022 Copyright 2022 HIROSE ELECTRIC CO., LTD. All Rights Reserved.
 In case of consideration for using Automotive equipment / device which demand high reliability, kindly contact our sales window correspondents.

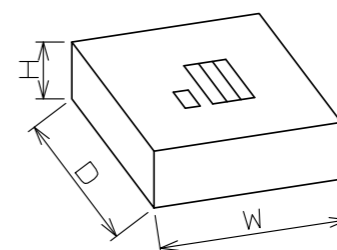
PACKAGING SPECIFICATION

REEL DIMENSION (FREE)

CARDBOARD DIMENSION (FREE)



BOX SIZE
 W=(405) (mm)
 D=(405) (mm)
 H=(51) (mm)



HRS	DRAWING NO.	EDC-361741-10-00
	PART NO.	GT25H2-16DP-2.2HC(10)
	CODE NO.	CL775-0089-4-10
		$\frac{2}{2}$