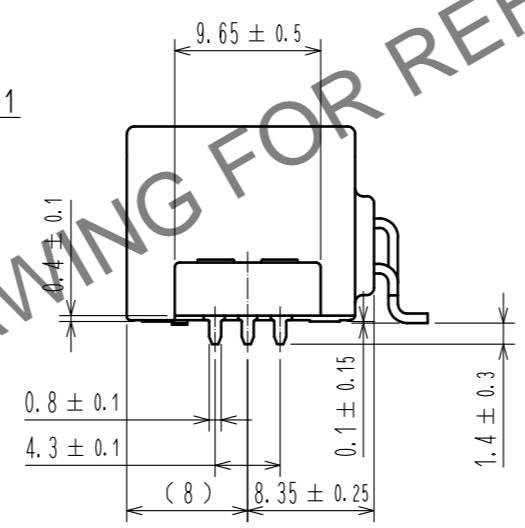
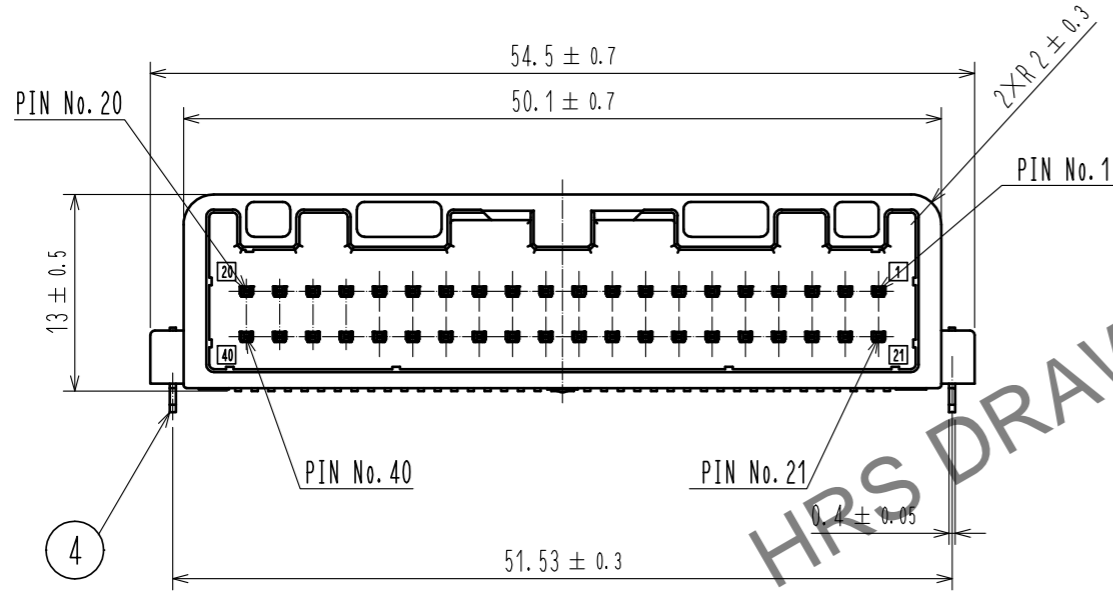
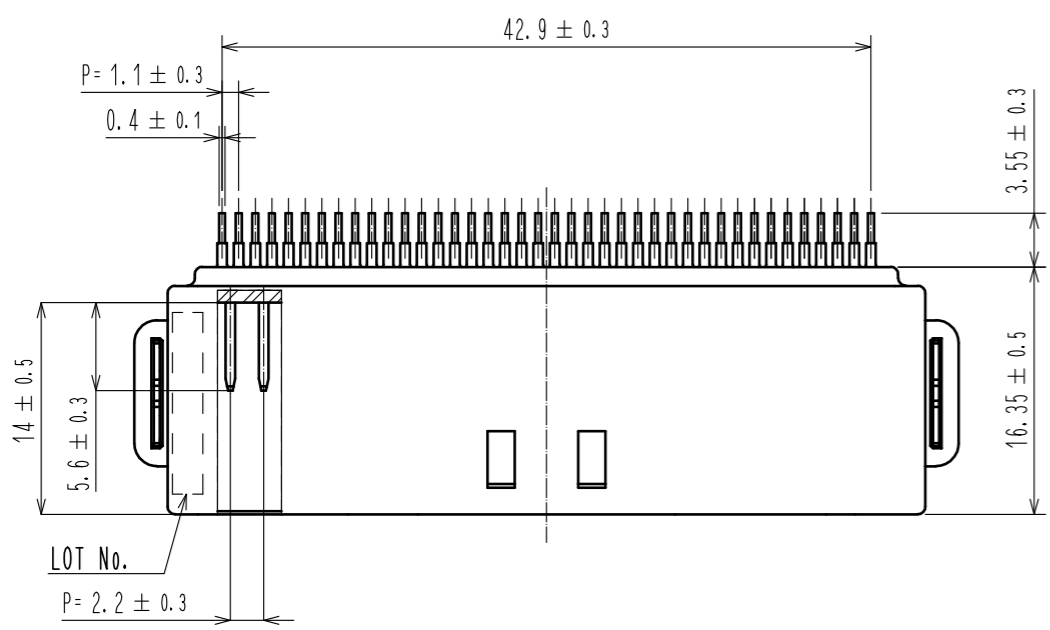
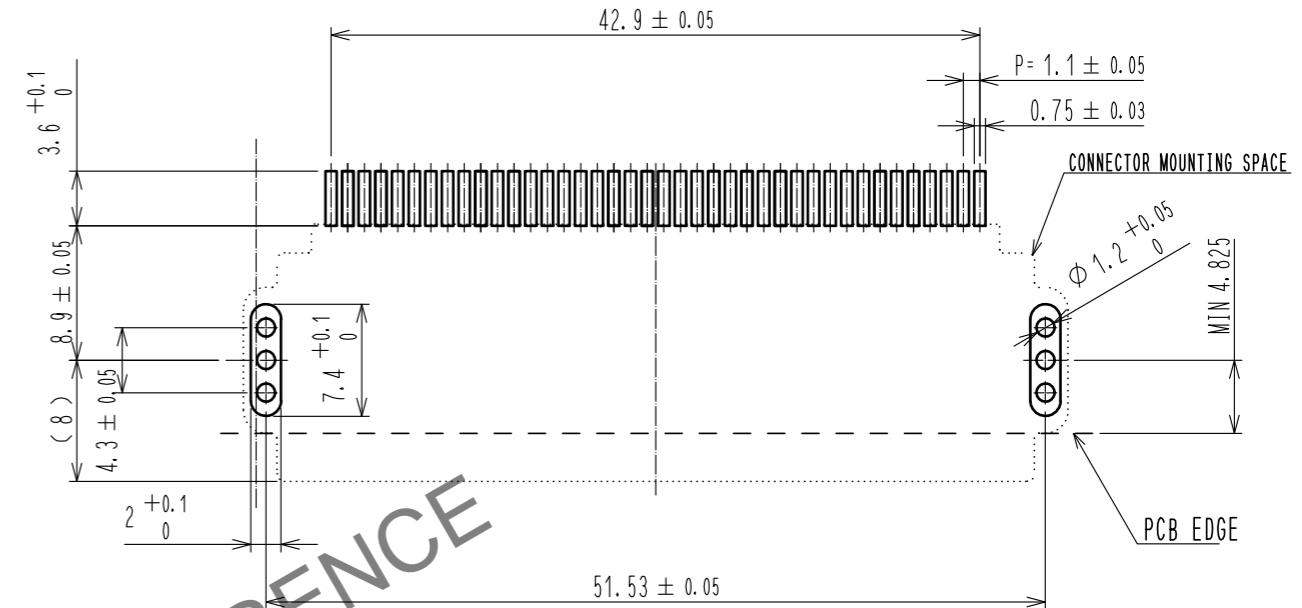


Mar.1.2024 Copyright 2024 HIROSE ELECTRIC CO., LTD. All Rights Reserved.
In case of consideration for using Automotive equipment / device which demand high reliability, kindly contact our sales window correspondents.

ELV. RoHS COMPLIANT

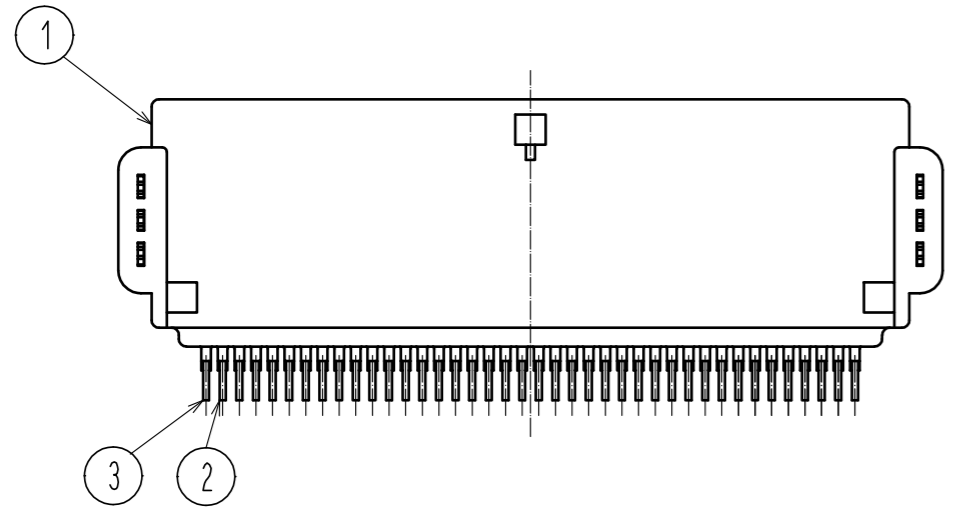
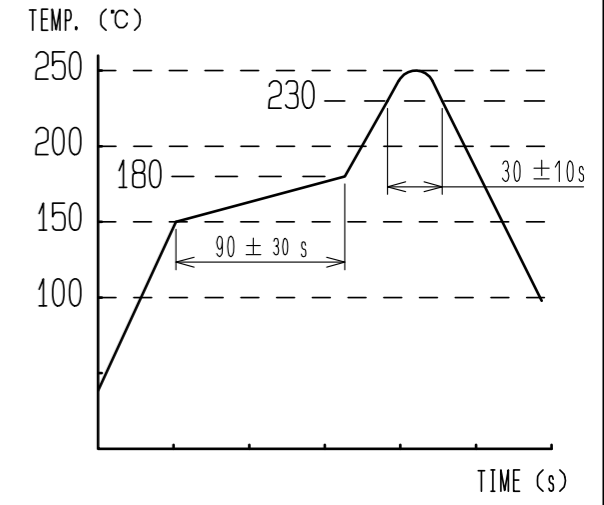


PIN ASSIGNMENT
20 40 19 39 18 38 17 37 16 36 15 35 14 34 13 33 12 32 11 31 10 30 9 29 8 28 7 27 6 26 5 25 4 24 3 23 2 22 1 21



RECOMMENDED PCB PATTERN

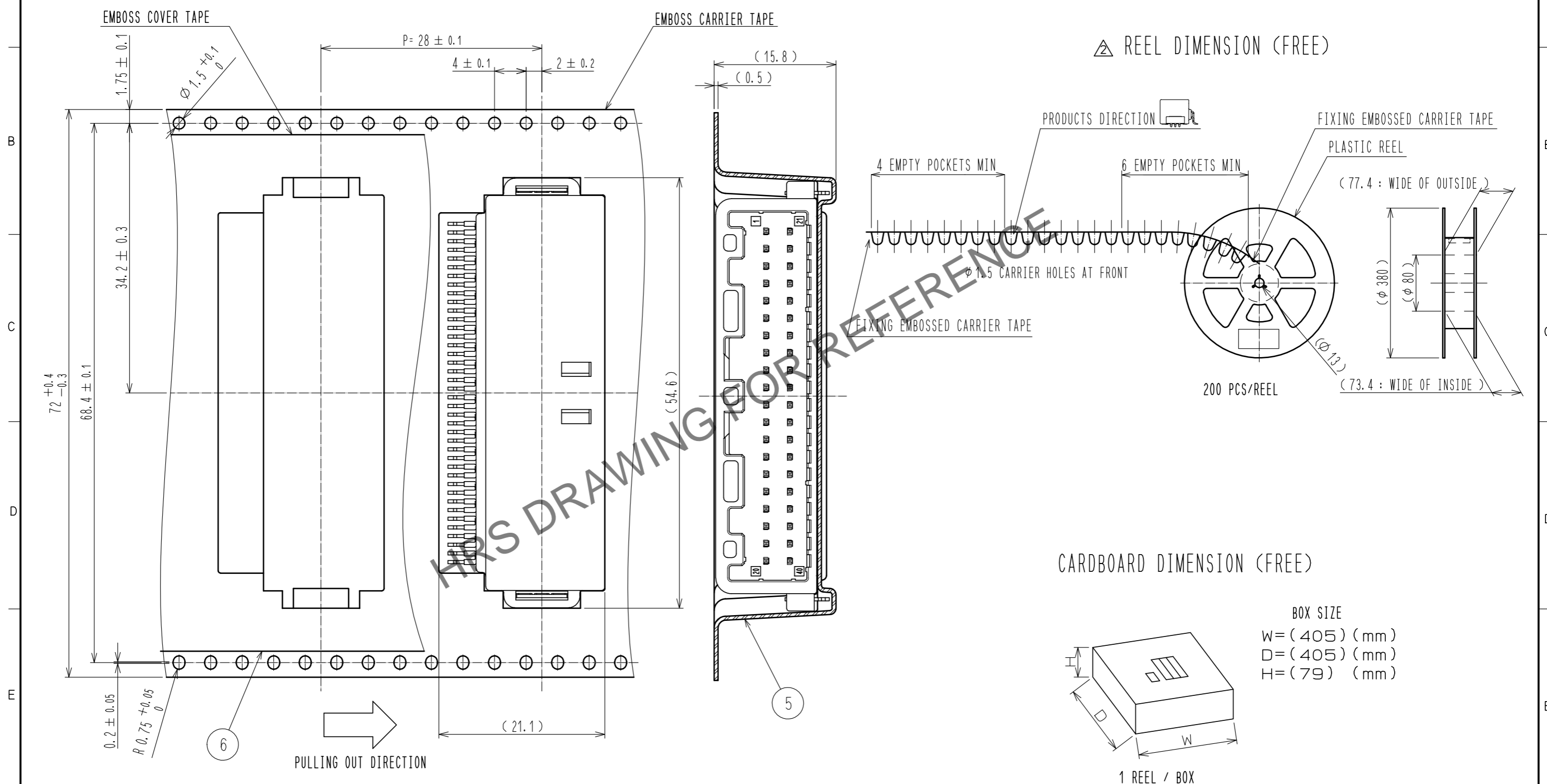
- NOTE1. RECOMMENDED TEMPERATURE PROFILE FOR REFLOW (REFER TO RIGHT FIG.) USED REFLOW SYSTEM
 : IR IN THE AIR OR NITROGEN
 NO. OF CYCLES : 2 MAX
 PEAK : 250°C
 OVER 230°C : 20~40s
 PREHEAT : 150~180°C
 60~120s
 2. TEMPERATURE FOR SOLDERING IRON : 280~300°C WITHIN 2s
 3. LEAD CO-PLANARITY SHALL BE 0.1mm MAX.
 4. RECOMMENDED PCB THICKNESS IS 1.6mm
 5. RECOMMENDED SOLDER THICKNESS IS 0.15mm.



3	BRASS	TIN PLATED	6	PET	
2	BRASS	TIN PLATED	5	PS	
1	PA	BLACK	4	BRASS	TIN PLATED
NO.	MATERIAL	FINISH . REMARKS	NO.	MATERIAL	FINISH . REMARKS
UNITS	mm	SCALE	2 : 1	COUNT	1
DESCRIPTION OF REVISIONS			DESIGNED	CHECKED	DATE
DIS-T-00006626			DONGCHAN KIM	HH. TSUKUMO	20200902
APPROVED : AR. SHIRAI			20181015	DRAWING NO. EDC-361742-10-00	
CHECKED : HS. OZAWA			20181015	PART NO. GT25H2-40DP-2. 2H<10>	
DESIGNED : YT. TAKANASHI			20181015	CODE NO. CL775-0090-3-10	
DRAWN : YT. TAKANASHI			20181015	1/2	

Mar.1.2024 Copyright 2024 HIROSE ELECTRIC CO., LTD. All Rights Reserved.
 In case of consideration for using Automotive equipment / device which demand high reliability, kindly contact our sales window correspondents.

PACKAGING SPECIFICATION



HRS	DRAWING NO.	EDC-361742-10-00	
	PART NO.	GT25H2-40DP-2.2H<10>	
	CODE NO.	CL775-0090-3-10	2/2