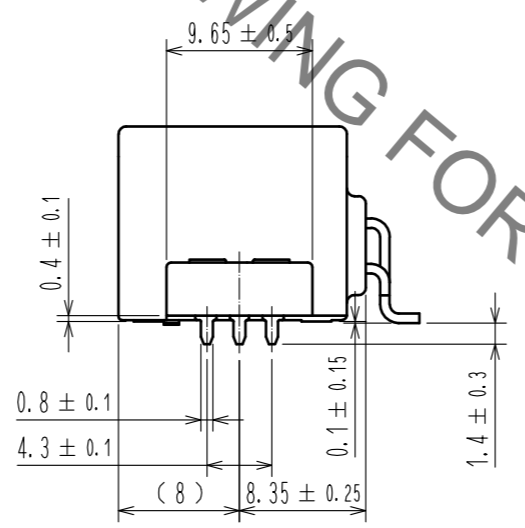
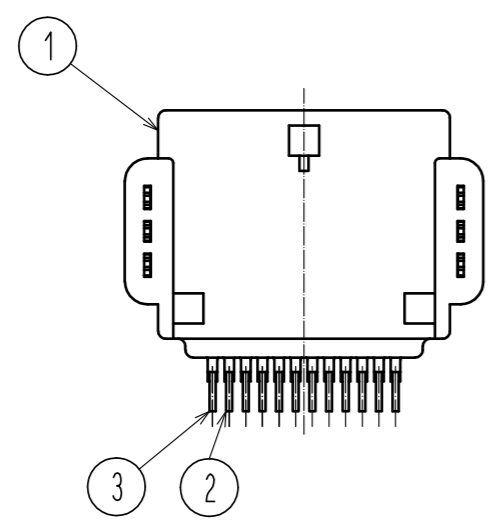
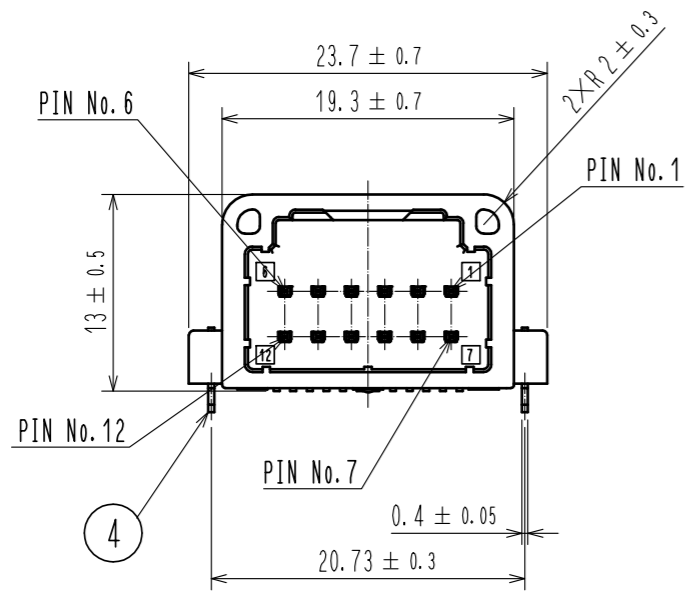
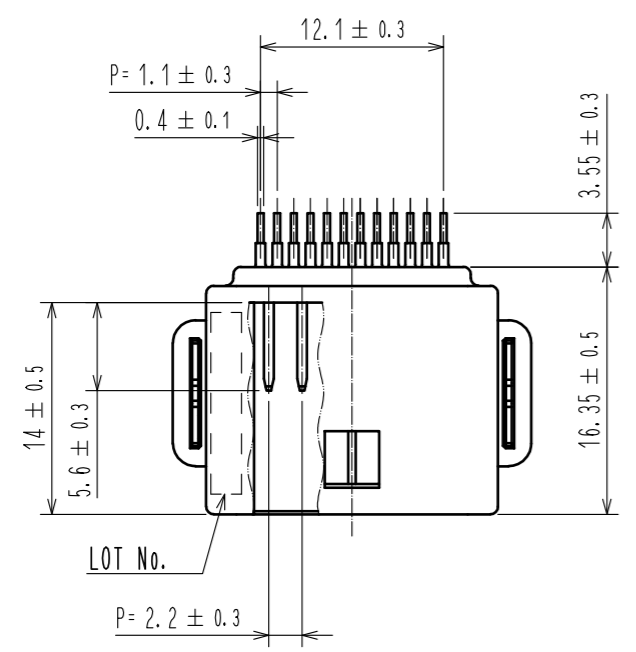
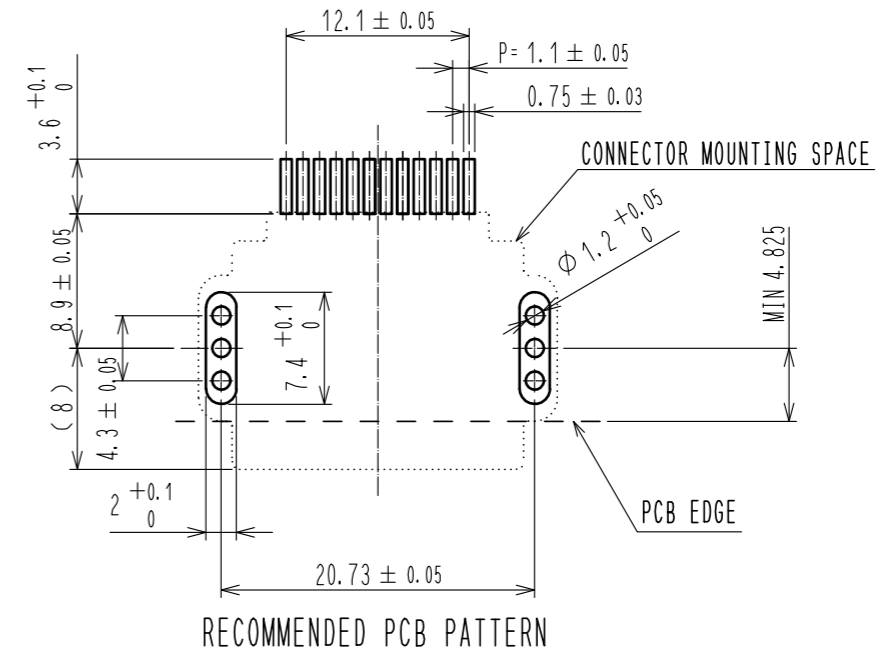


Jan.1.2022 Copyright 2022 HIROSE ELECTRIC CO., LTD. All Rights Reserved.
 In case of consideration for using Automotive equipment / device which demand high reliability, kindly contact our sales window correspondents.

ELV. RoHS COMPLIANT

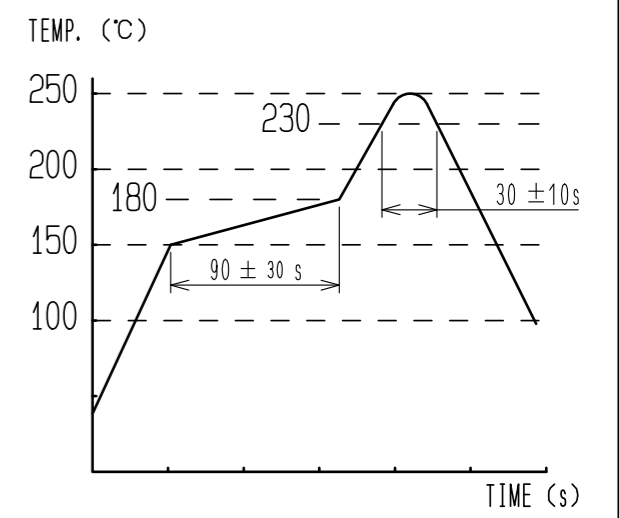


PIN ASSIGNMENT
 6 12 5 11 4 10 3 9 2 8 1 7



HRS DRAWING FOR REFERENCE

- NOTE1. RECOMMENDED TEMPERATURE PROFILE FOR REFLOW (REFER TO RIGHT FIG.)
 USED REFLOW SYSTEM : IR IN THE AIR OR NITROGEN
 NO. OF CYCLES : 2 MAX
 PEAK : 250°C
 OVER 230°C : 20~40s
 PREHEAT : 150~180°C
 60~120s
2. TEMPERATURE FOR SOLDERING IRON : 280~300°C WITHIN 2s
3. LEAD CO-PLANARITY SHALL BE 0.1mm MAX.
4. RECOMMENDED PCB THICKNESS IS 1.6mm
5. RECOMMENDED SOLDER THICKNESS IS 0.15mm.



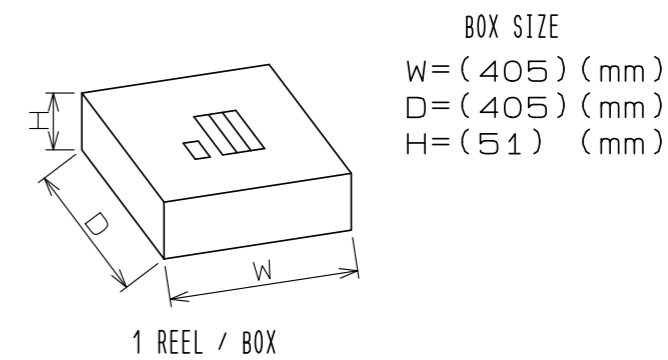
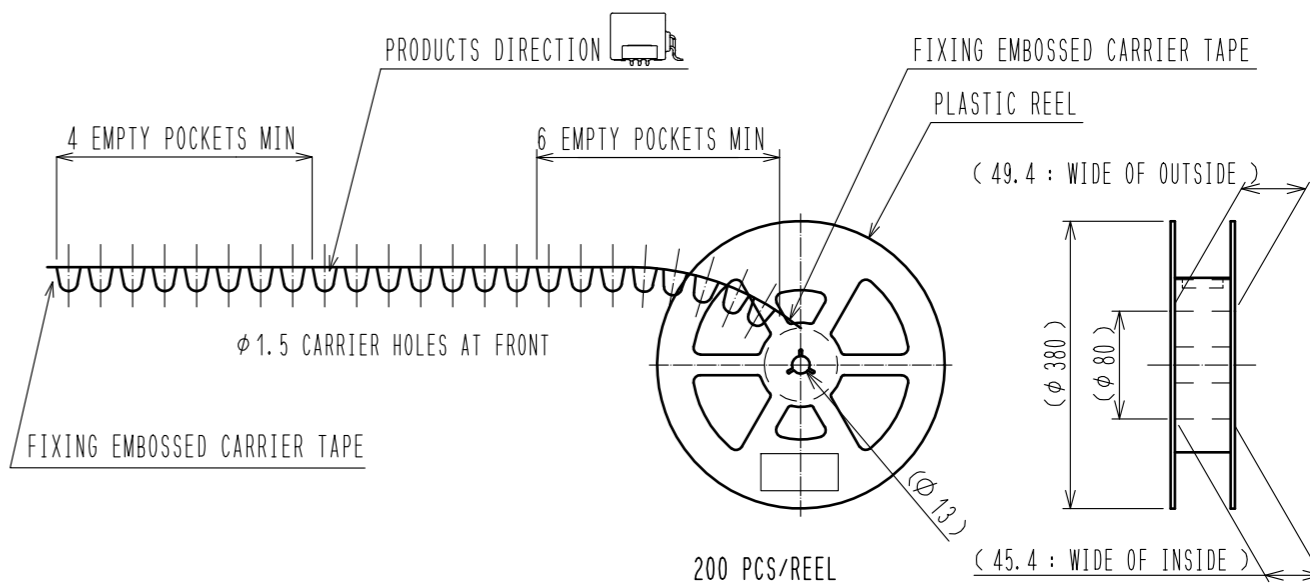
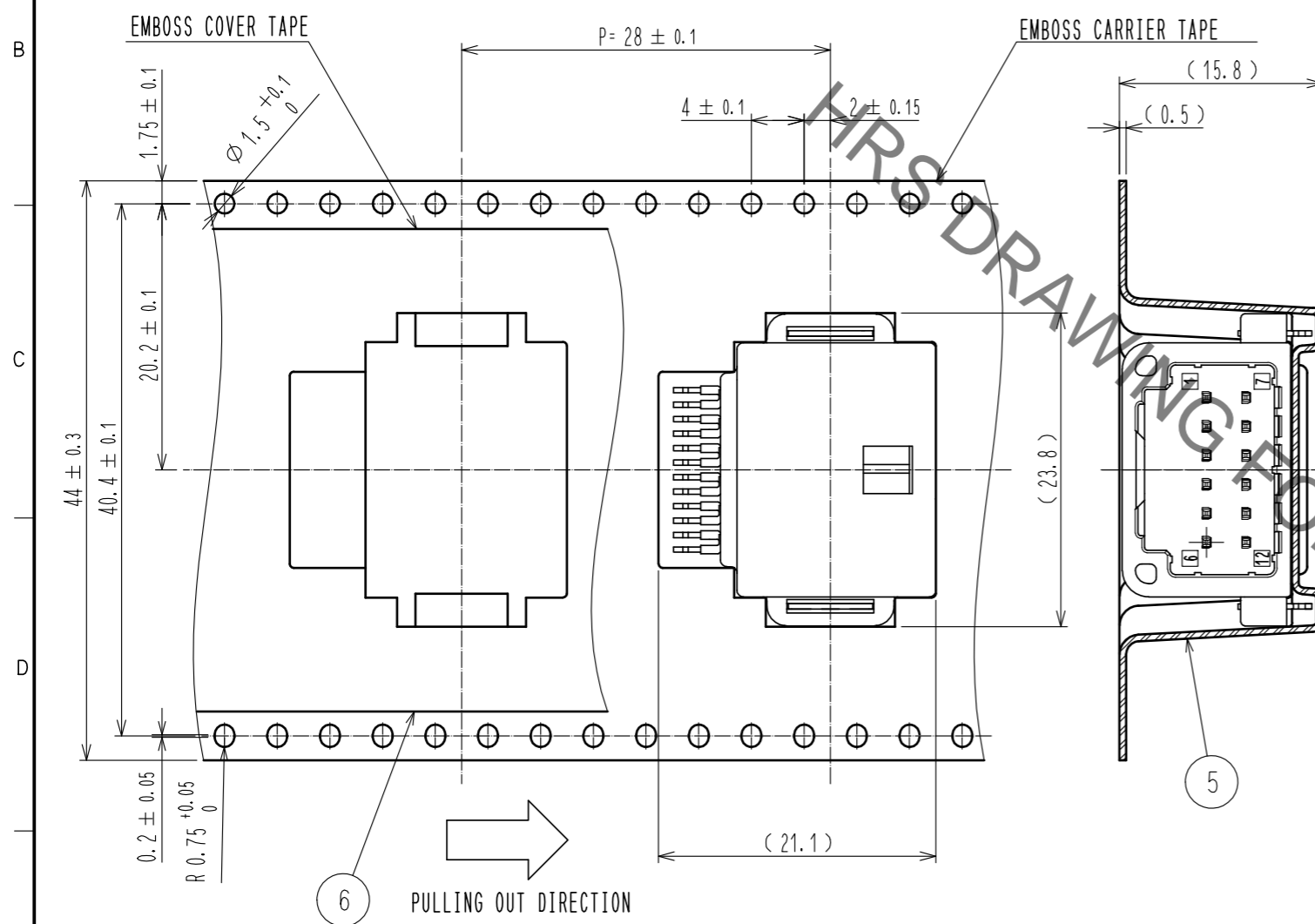
3	BRASS	TIN PLATED	6	PET	
2	BRASS	TIN PLATED	5	PS	
1	PA	BLACK	4	BRASS	TIN PLATED
NO.	MATERIAL	FINISH . REMARKS	NO.	MATERIAL	FINISH . REMARKS
UNITS	mm	SCALE	2 : 1	COUNT	1
DESCRIPTION OF REVISIONS			DESIGNED	CHECKED	DATE
DIS-T-00006626			DONGCHAN KIM	HH. TSUKUMO	20200902
APPROVED : AR. SHIRAI 20180622			DRAWING NO. EDC-361744-10-00		
CHECKED : HS. OZAWA 20180622			PART NO. GT25H2-12DP-2. 2H<10>		
DESIGNED : YT. HAYAKAWA 20180622			CODE NO. CL775-0092-9-10		
DRAWN : GYEONGMIN LEE 20180622			1/2		

Jan.1.2022 Copyright 2022 HIROSE ELECTRIC CO., LTD. All Rights Reserved.
 In case of consideration for using Automotive equipment / device which demand high reliability, kindly contact our sales window correspondents.

PACKAGING SPECIFICATION

REEL DIMENSION (FREE)

CARDBOARD DIMENSION (FREE)



HRS	DRAWING NO.	EDC-361744-10-00	
	PART NO.	GT25H2-12DP-2.2HC(10)	
	CODE NO.	CL775-0092-9-10	2/2