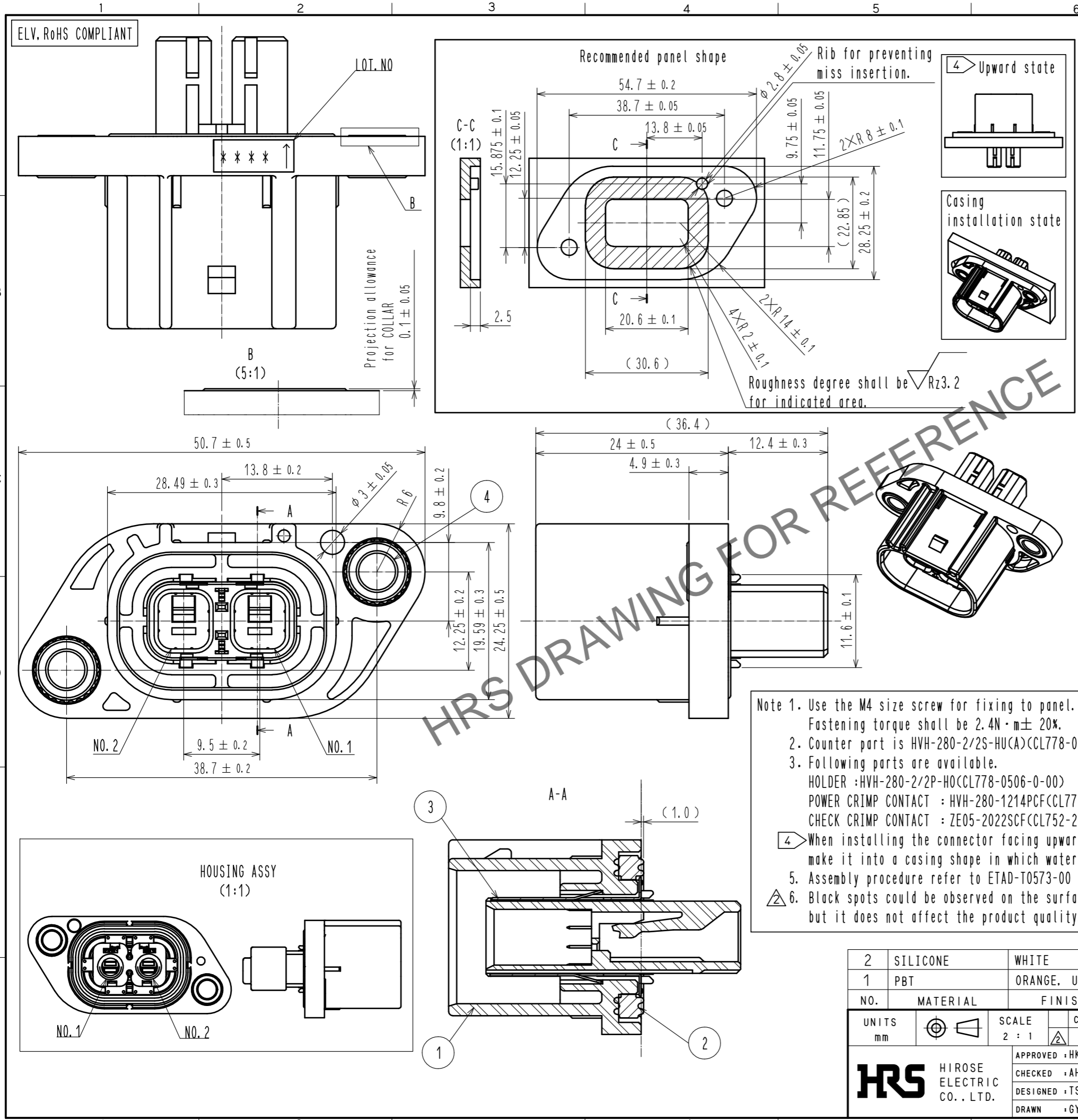


Feb.1.2025 Copyright 2025 HIROSE ELECTRIC CO., LTD. All Rights Reserved.
In case of consideration for using Automotive equipment / device which demand high reliability, kindly contact our sales window correspondents.



Packing specification

(1) After placing parts in trays, stack in five layers.
(Top layer will be empty.)

Empty tray Band Cardboard pad Loaded trays (1 tray #25pcs x 4 layers = 100pcs) Cardboard pad

(2) Place bound trays in box, then place cardboard sheet on top.

(3) Using packing tape, affix sheet of cardboard to box in four places.

Packing tape

(4) Place lid on box and seal with packing tape.

W=(368)mm
D=(278)mm
H=(261)mm

Note 1. Use the M4 size screw for fixing to panel.
Fastening torque shall be $2.4N \cdot m \pm 20\%$.

2. Counter part is HVH-280-2/2S-HU(A)(CL778-0508-0-00)

3. Following parts are available.
HOLDER : HVH-280-2/2P-H0(CL778-0506-0-00)
POWER CRIMP CONTACT : HVH-280-1214PCF(CL778-0501-0-00)
CHECK CRIMP CONTACT : ZE05-2022SCF(CL752-2001-0-00)

4 When installing the connector facing upwards, make it into a casing shape in which water does not collect.

5. Assembly procedure refer to ETAD-T0573-00

6. Black spots could be observed on the surface of Housing, but it does not affect the product quality.

2	SILICONE	WHITE	4	SWCH	SURFACE : NICKEL PLATING 5μm MIN		
1	PBT	ORANGE, UL94 V-0	3	SUS	SURFACE : TIN PLATING 1μm MIN UNDER PLATING : NICKEL PLATING 0.5μm MIN		
NO.	MATERIAL	FINISH . REMARKS	NO.	MATERIAL	FINISH . REMARKS		
UNITS mm		SCALE 2 : 1	COUNT 1	DESCRIPTION OF REVISIONS DIS-T-00016953	DESIGNED TS. SHIMIZU	CHECKED TY. MOGI	DATE 20230327
HRS HIROSE ELECTRIC CO., LTD.		APPROVED : HK. UMEHARA	20181003	DRAWING NO. EDC-377226-00-00			
		CHECKED : AH. EDASHIGE	20181003	PART NO. HVH-280-2/2P-HU(A)			
		DESIGNED : TS. SHIMIZU	20181003	CODE NO. CL0778-0510-0-00			
		DRAWN : GYEONGMIN LEE	20181003				