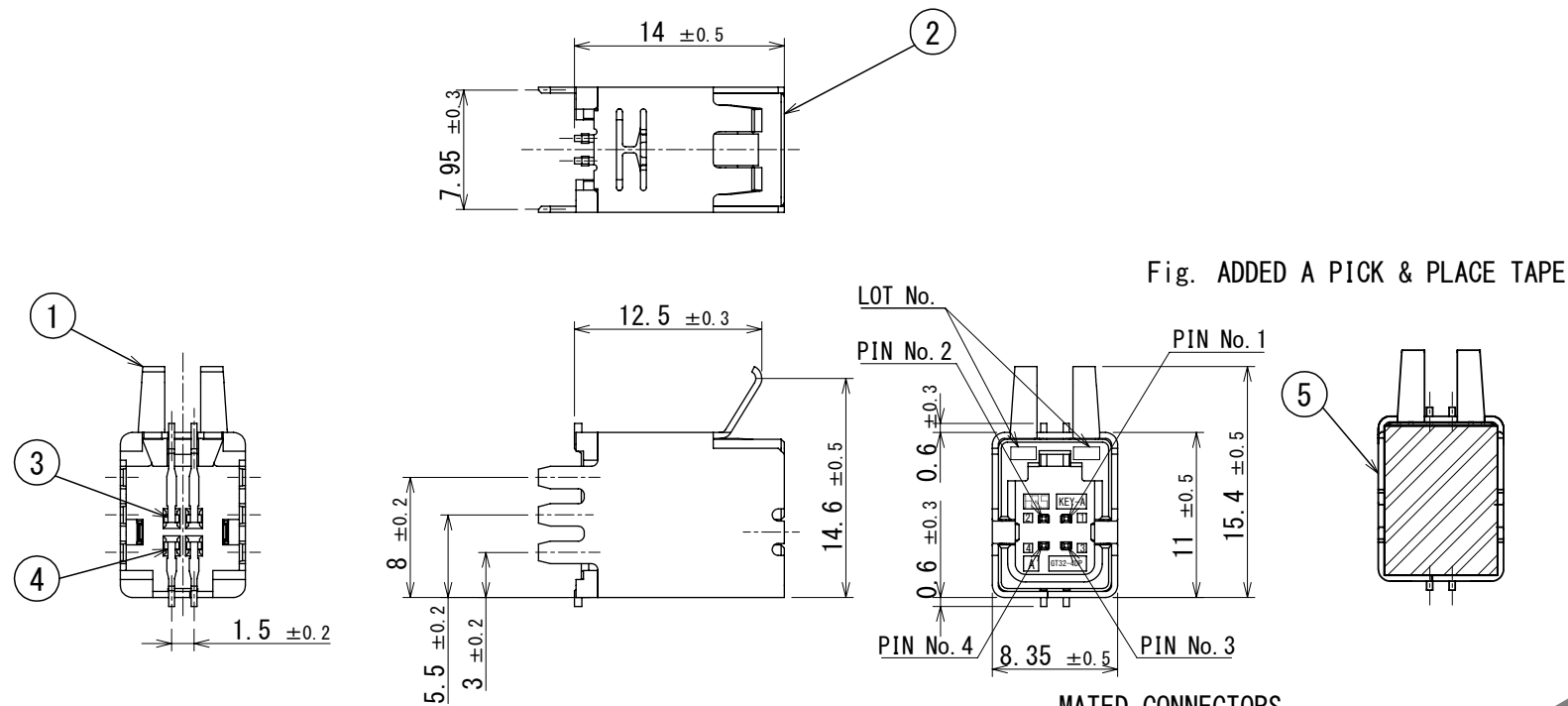
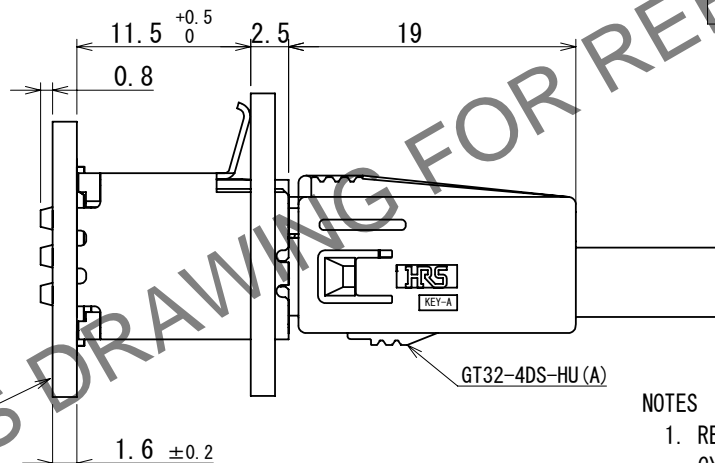


Apr.1.2024 Copyright 2024 HIROSE ELECTRIC CO., LTD. All Rights Reserved.
In case of consideration for using Automotive equipment / device which demand high reliability, kindly contact our sales window correspondents.

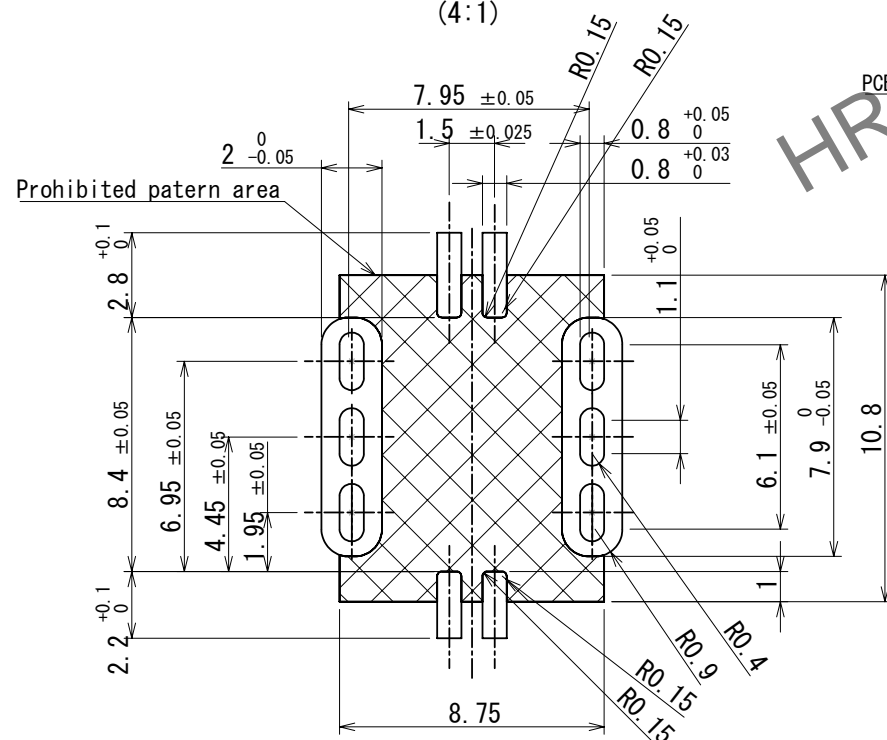
RoHS, ELV COMPLIANT



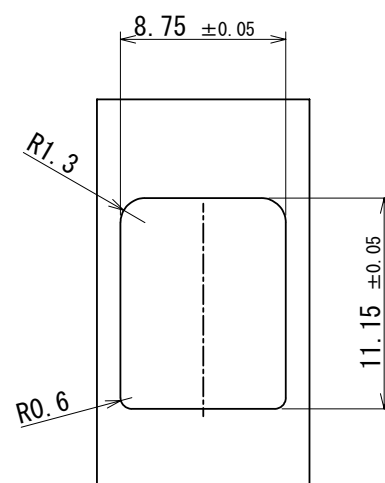
MATED CONNECTORS



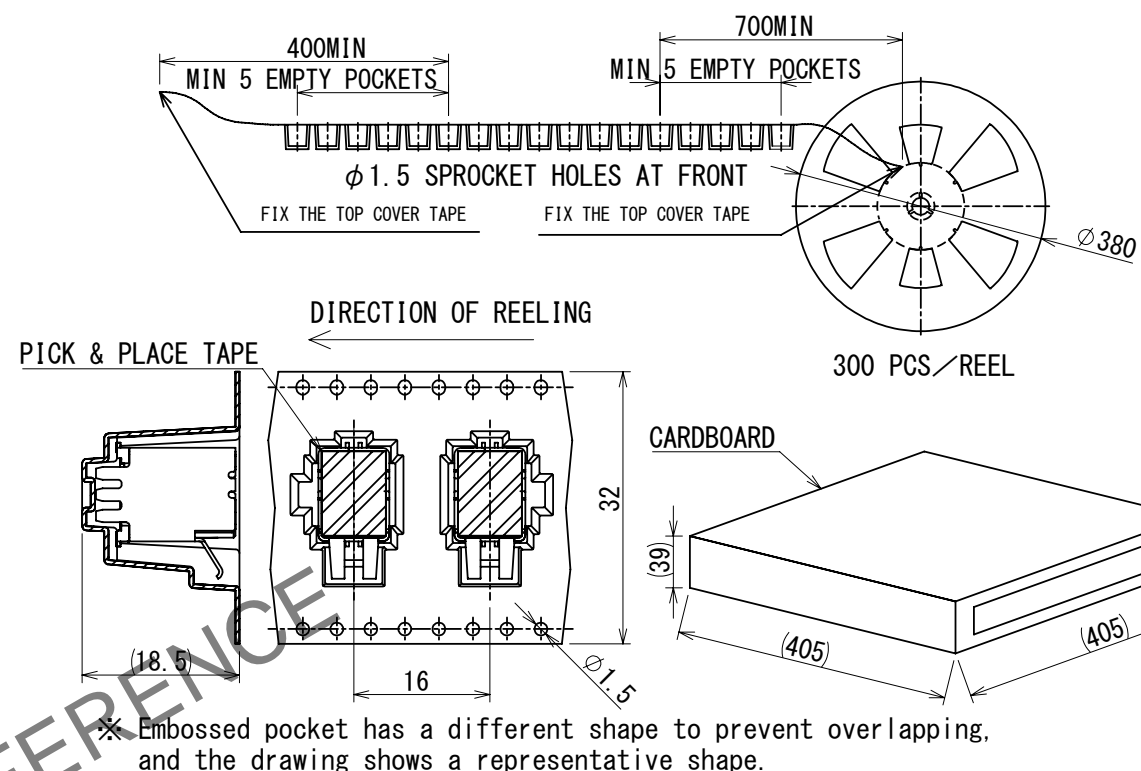
RECOMMENDED PCB LAYOUT
(4:1)



RECOMMENDED PANEL CUTOUT



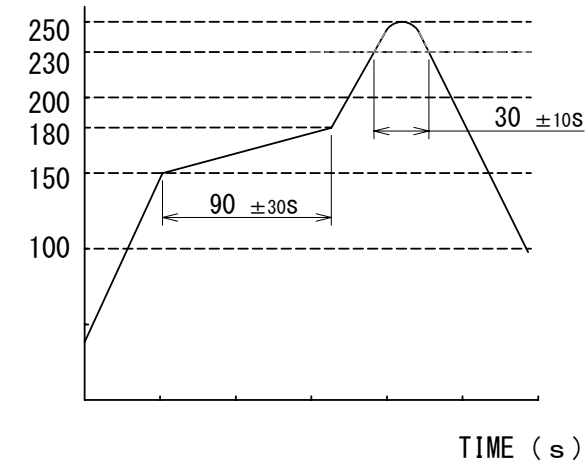
PACKING STYLE

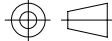
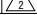



NOTES

1. RECOMMENDED REFLOW PROFILE (SEE RIGHT GRAPH)
CYCLE TIME: UP TO 2 CYCLES OF REFLOW SOLDERING ARE POSSIBLE UNDER THE CONDITIONS, PROVIDED THAT THERE IS A RETURN TO NORMAL TEMPERATURE BETWEEN THE FIRST AND SECOND CYCLE.
PEAK TEMPERATURE: 250°C
230°C MIN. FOR 20 TO 40 SECONDS.
PREHEATING AREA 150~180°C FOR 60 TO 120 SECONDS.
2. HAND SOLDERING: 280~300°C, 2SECONDS MAX.
3. CONTACT COPLANARITY: 0.1mm MAX.
4. RECOMMENDED THICKNESS OF PCB: 1.6mm
5. RECOMMENDED THICKNESS OF SOLDERING PASTE: 0.12mm

TEMP. (°C)



3	BRASS	TIN PLATING						
2	PA	BROWN		5	POLYIMIDE	PICK & PLACE TAPE		
1	COPPER ALLOY	TIN PLATING		4	BRASS	TIN PLATING		
NO.	MATERIAL	FINISH , REMARKS		NO.	MATERIAL	FINISH , REMARKS		
UNITS mm		SCALE 2 : 1	COUNT	DESCRIPTION OF REVISIONS		DESIGNED	CHECKED	DATE
			 0	DIS-T-00018485		KN. YANAGIMOTO	EJ. WAKATSUKI	2023. 10. 1
			APPROVED : AR. SHIRAI	2018. 02. 01	DRAWING NO. EDC-362123-30-01			
			CHECKED : AR. SHIRAI	2018. 02. 01	PART NO. GT32-4DP-1. 5V (A) (30)			
			DESIGNED : TS. KUBOTA	2018. 02. 01	CODE NO. CL0782-0065-4-30			
	HIROSE ELECTRIC CO., LTD.		DRAWN : TS. KUBOTA	2018. 02. 01	