

\* Embossed pocket has a different shape to prevent overlapping, and the drawing shows a representative shape.



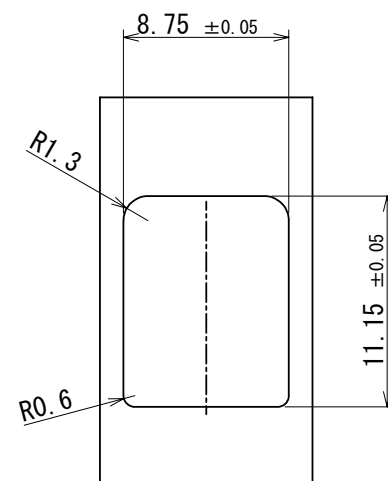
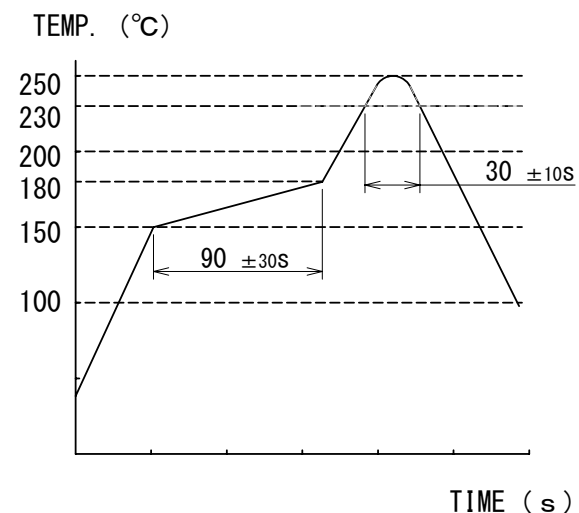
1. RECOMMENDED REFLOW PROFILE (SEE RIGHT GRAPH)  
CYCLE TIME: UP TO 2 CYCLES OF REFLOW SOLDERING ARE POSSIBLE  
UNDER THE CONDITIONS, PROVIDED THAT THERE IS  
A RETURN TO NORMAL TEMPERATURE BETWEEN THE FIRST  
AND SECOND CYCLE.

PEAK TEMPERATURE: 250°C

230°C MIN. FOR 20 TO 40 SECONDS.

PREHEATING AREA 150~180°C FOR 60 TO 120 SECONDS.

2. HAND SOLDERING: 280~300°C, 2SECONDS MAX.
3. CONTACT COPLANARITY: 0.1mm MAX.
4. RECOMMENDED THICKNESS OF PCB: 1.6mm
5. RECOMMENDED THICKNESS OF SOLDERING PASTE: 0.12mm

[illegible]