

## Features

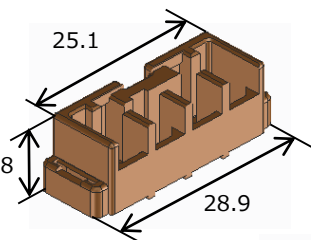
- 1 Small and low profile design (12mm height)
- 2 Excellent high frequency characteristic for ETC\* frequency
- 3 Wide key and pin count varieties
- 4 Through hole reflow

\*Electric Toll Collection system

## Dimensions

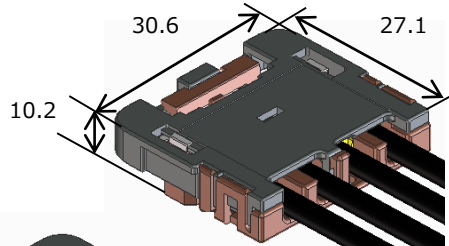
### Receptacle

GT36A-4P-DSA



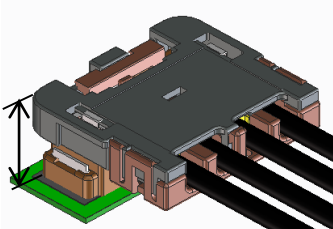
### Plug

Housing : GT36A-4S-HU  
Cover : GT36A-4S-HU



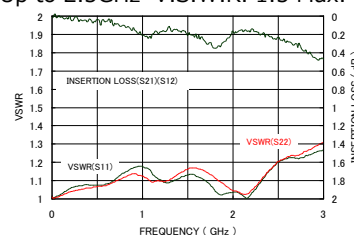
### Mated

12

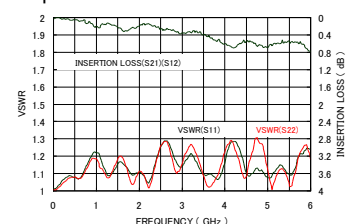


## Excellent Contact Design for ETC\* Frequency Range (5.9GHz)

[Contact for GPS, Mobile, Bluetooth]  
Up to 2.5GHz V.S.W.R. 1.5 Max.



[Contact for ETC\*]  
Up to 5.9GHz V.S.W.R. 1.5 Max.



## Specifications

Rated Current	1A
Rated Voltage	50V DC
Operating Temperature	-40 to +105°C*
Contact Resistance	50mΩ Max. (1A DC)
Withstanding Voltage	125V AC for 1 min.
Insulation Resistance	100MΩ Min. (500V DC)
V.S.W.R	V.S.W.R. 1.5 Max. (Up to 5.9GHz) *Measured with GT36G

\* Includes the temperature rise by current flow.