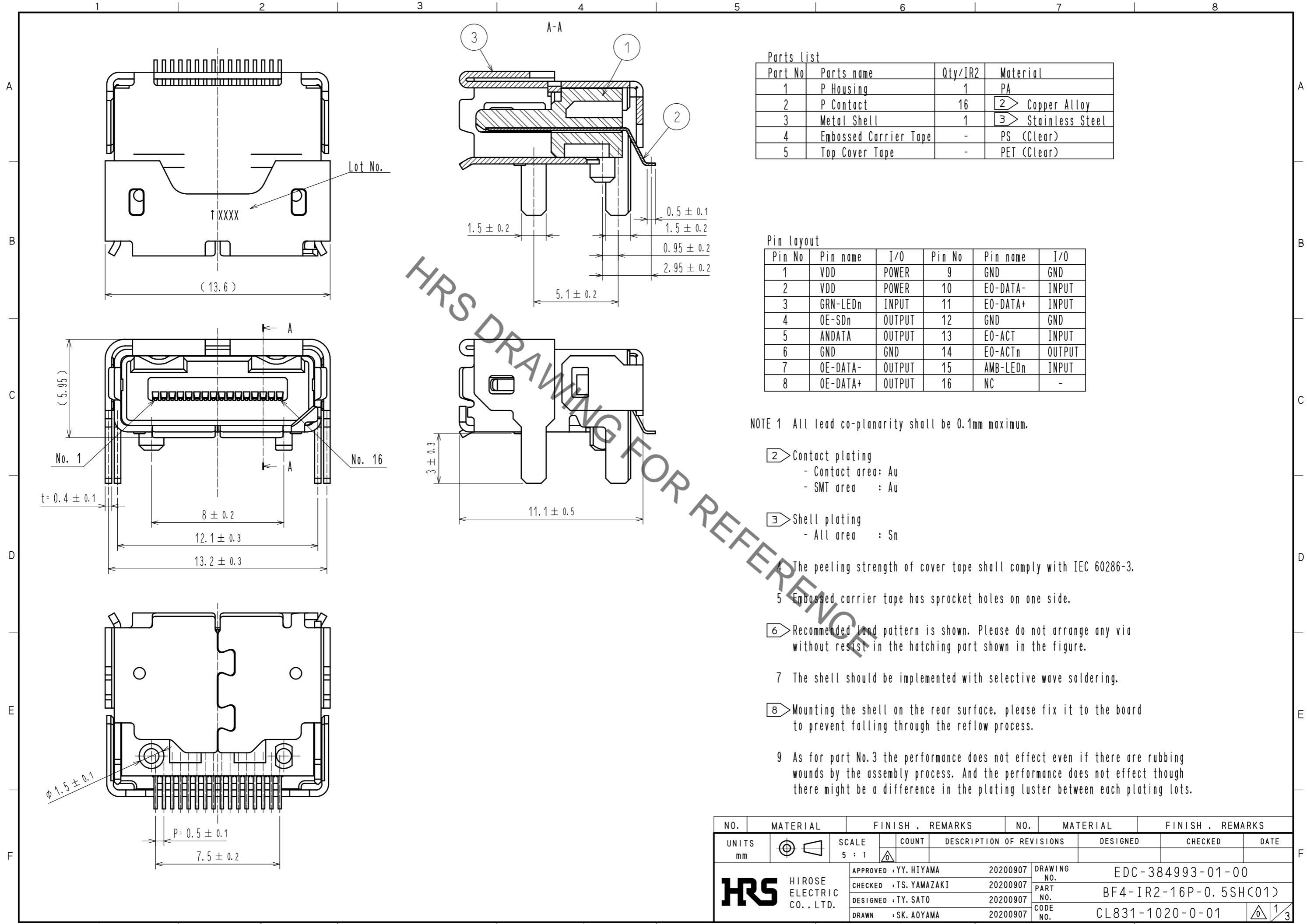


Feb.1.2021 Copyright 2021 HIROSE ELECTRIC CO., LTD. All Rights Reserved.
In case of consideration for using Automotive equipment / device which demand high reliability, kindly contact our sales window correspondents.



Parts list

| Part No | Parts name | Qty/IR2 | Material |
|---------|-----------------------|---------|-------------------|
| 1 | P Housing | 1 | PA |
| 2 | P Contact | 16 | 2 Copper Alloy |
| 3 | Metal Shell | 1 | 3 Stainless Steel |
| 4 | Embossed Carrier Tape | - | PS (Clear) |
| 5 | Top Cover Tape | - | PET (Clear) |

Pin layout

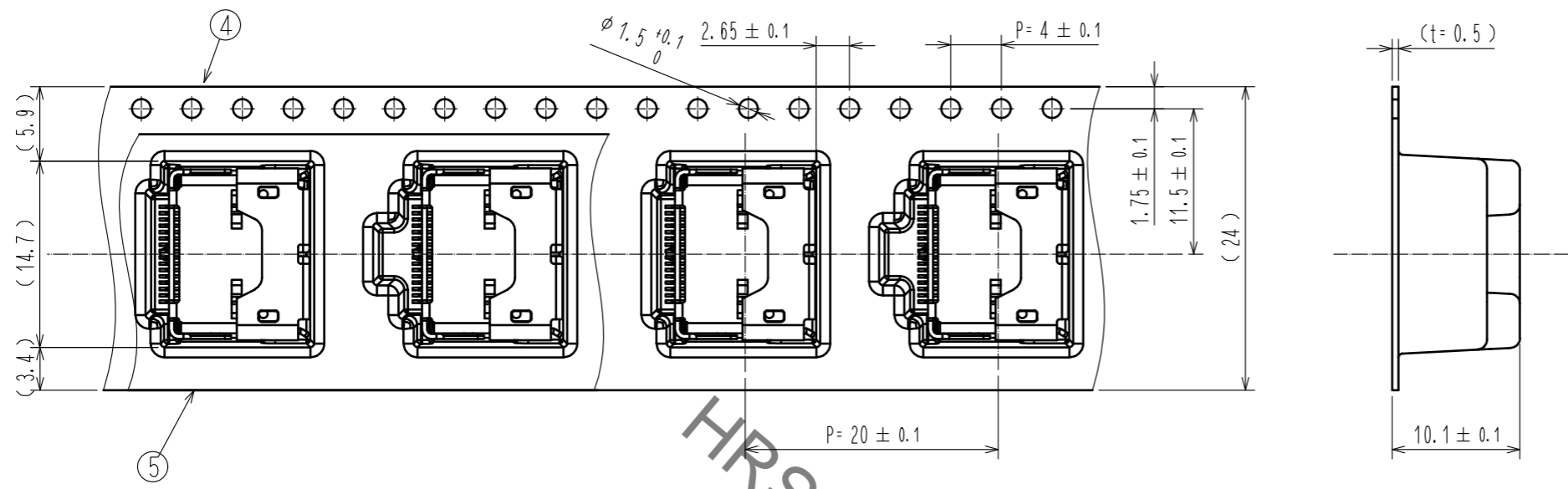
| Pin No | Pin name | I/O | Pin No | Pin name | I/O |
|--------|----------|--------|--------|----------|--------|
| 1 | VDD | POWER | 9 | GND | GND |
| 2 | VDD | POWER | 10 | EO-DATA- | INPUT |
| 3 | GRN-LEDn | INPUT | 11 | EO-DATA+ | INPUT |
| 4 | OE-SDn | OUTPUT | 12 | GND | GND |
| 5 | ANDATA | OUTPUT | 13 | EO-ACT | INPUT |
| 6 | GND | GND | 14 | EO-ACTn | OUTPUT |
| 7 | OE-DATA- | OUTPUT | 15 | AMB-LEDn | INPUT |
| 8 | OE-DATA+ | OUTPUT | 16 | NC | - |

- NOTE 1 All lead co-planarity shall be 0.1mm maximum.
- 2 Contact plating
 - Contact area: Au
 - SMT area : Au
 - 3 Shell plating
 - All area : Sn
 - 4 The peeling strength of cover tape shall comply with IEC 60286-3.
 - 5 Embossed carrier tape has sprocket holes on one side.
 - 6 Recommended land pattern is shown. Please do not arrange any via without resist in the hatching part shown in the figure.
 - 7 The shell should be implemented with selective wave soldering.
 - 8 Mounting the shell on the rear surface, please fix it to the board to prevent falling through the reflow process.
 - 9 As for part No.3 the performance does not effect even if there are rubbing wounds by the assembly process. And the performance does not effect though there might be a difference in the plating luster between each plating lots.

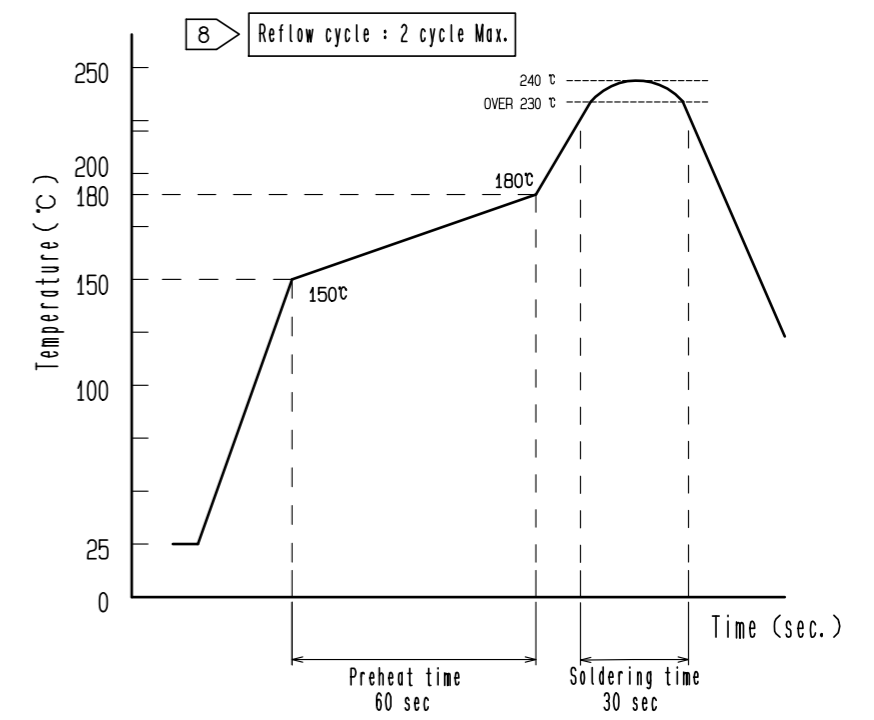
| NO. | MATERIAL | FINISH . REMARKS | NO. | MATERIAL | FINISH . REMARKS |
|---------------------------------|----------|------------------|--------------------------------|--------------------------|------------------|
| UNITS mm | | SCALE 5 : 1 | COUNT | DESCRIPTION OF REVISIONS | DESIGNED |
| APPROVED : YY. HIYAMA 20200907 | | | DRAWING NO. EDC-384993-01-00 | | |
| CHECKED : TS. YAMAZAKI 20200907 | | | PART NO. BF4-IR2-16P-0.5SH(01) | | |
| DESIGNED : TY. SATO 20200907 | | | CODE NO. CL831-1020-0-01 | | |
| DRAWN : SK. AOYAMA 20200907 | | | | | |

Feb.1.2021 Copyright 2021 HIROSE ELECTRIC CO., LTD. All Rights Reserved.
 In case of consideration for using Automotive equipment / device which demand high reliability, kindly contact our sales window correspondents.

Dimension of embossed carrier tape (Scale: free)

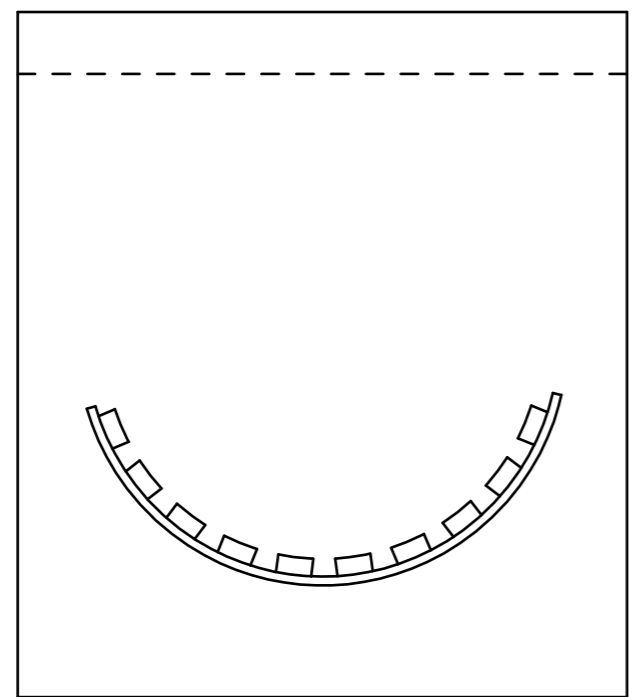


Recommended reflow temperature profile using Lead-Free solder paste.

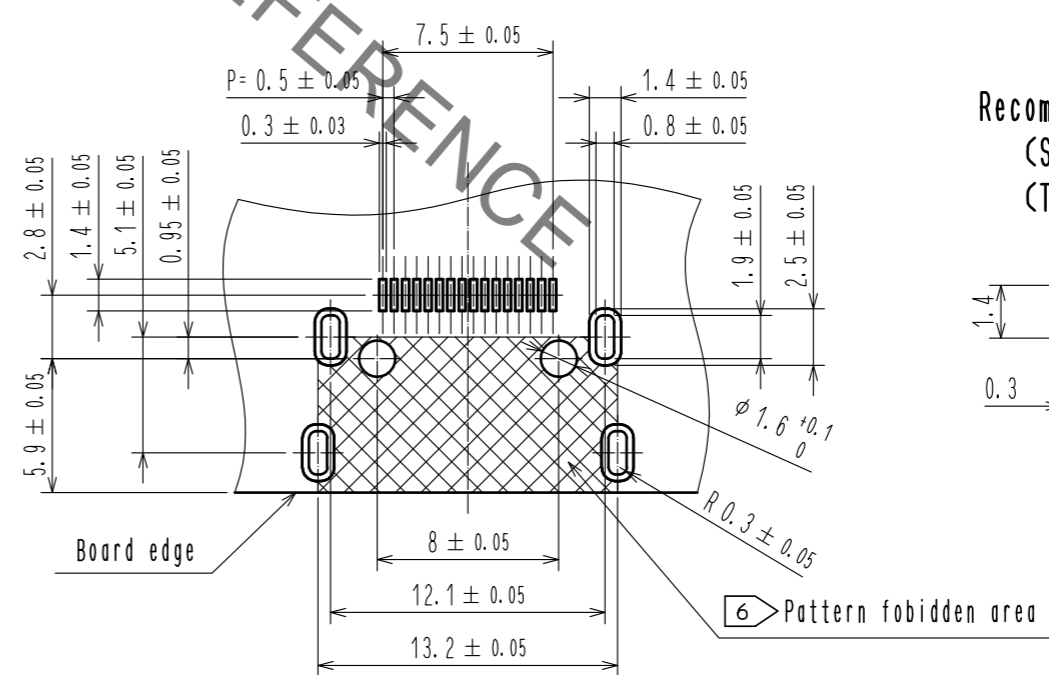


Packing style (Scale : FREE)

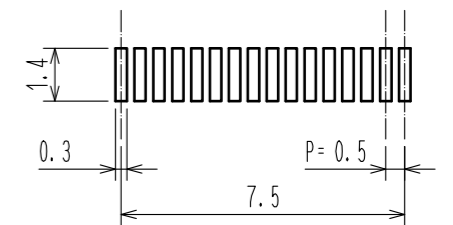
10 pcs. per pack



Recommended PCB land pattern (Scale: free)
 (PCB thickness: 2.4mm)

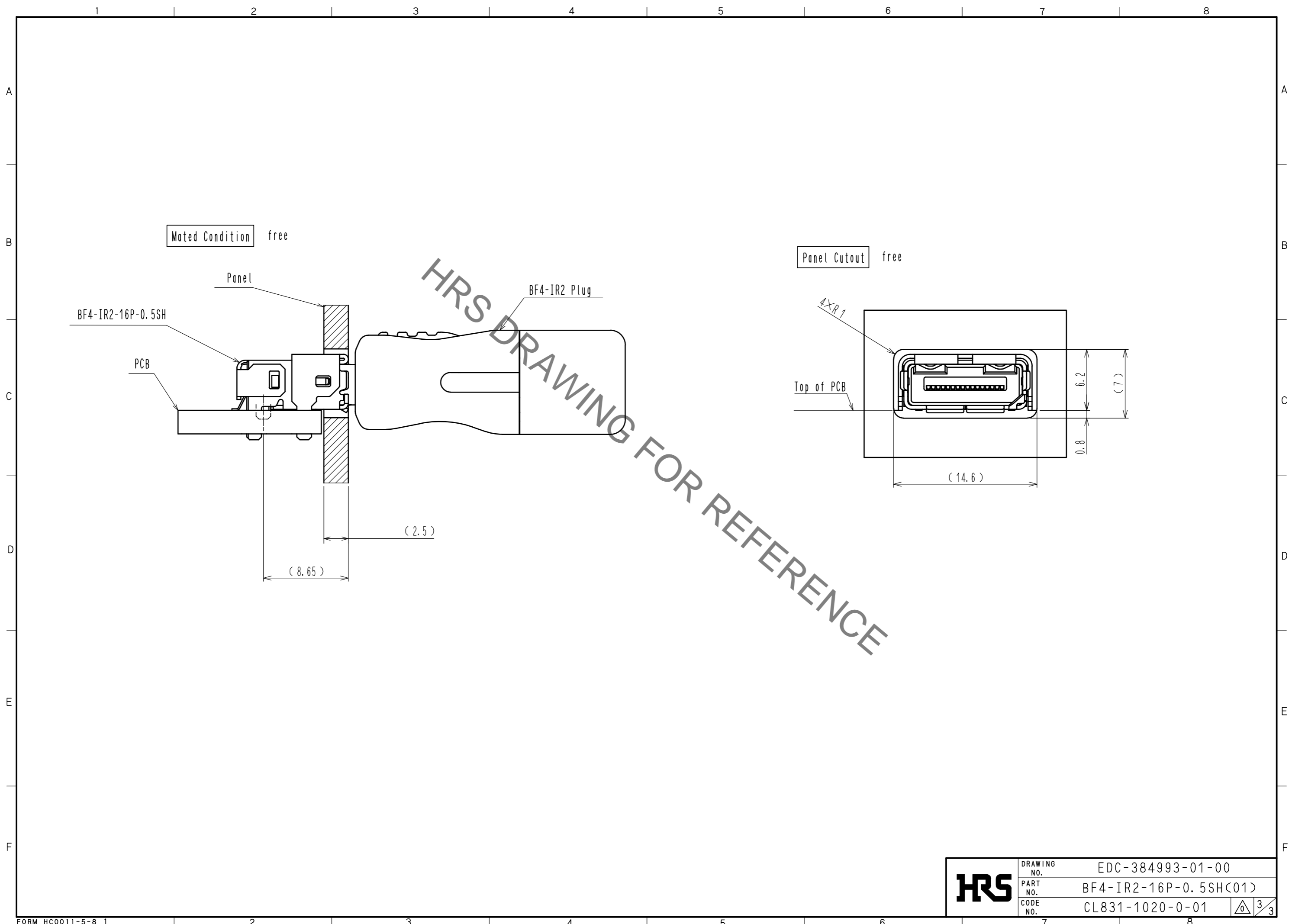


Recommended stencil dimensions
 (Scale: free)
 (Thickness: 120 μm)



| | | |
|------------|-------------|------------------------|
| HRS | DRAWING NO. | EDC-384993-01-00 |
| | PART NO. | BF4-IR2-16P-0.5SH(C01) |
| | CODE NO. | CL831-1020-0-01 |
| | | \triangle 2/3 |

Feb.1.2021 Copyright 2021 HIROSE ELECTRIC CO., LTD. All Rights Reserved.
In case of consideration for using Automotive equipment / device which demand high reliability, kindly contact our sales window correspondents.



| | | |
|------------|-------------|-----------------------|
| HRS | DRAWING NO. | EDC-384993-01-00 |
| | PART NO. | BF4-IR2-16P-0.5SH(01) |
| | CODE NO. | CL831-1020-0-01 |
| | | 3/3 |