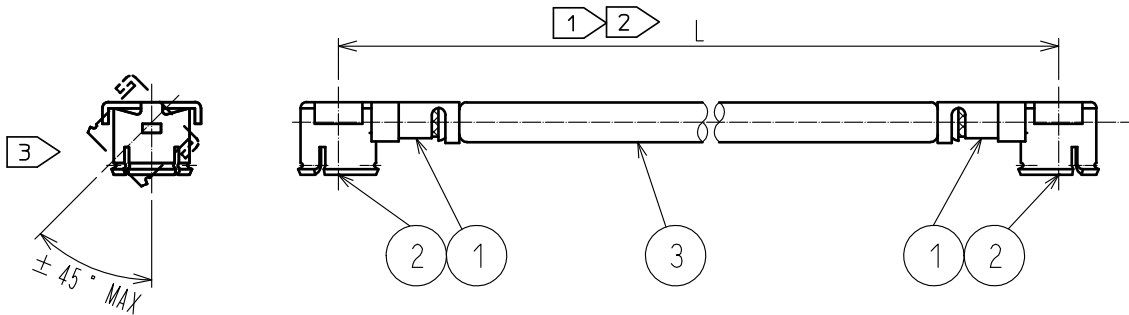


Apr. 1. 2025 Copyright 2025 HIROSE ELECTRIC CO., LTD. All Rights Reserved.
 In case of consideration for using Automotive equipment / device which demand high reliability, kindly contact our sales window correspondents.



Part No.	Cable color
~066*1~	GRAY
~066*2~	BLACK
~066*~	GRAY

NOTE 1 We indicate the length of the harness on the last of product name, 'L' part.

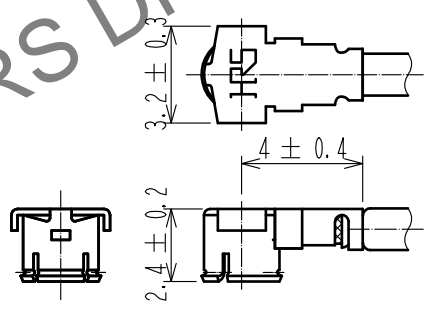
2 Tolerance for [L]

Length L [mm]	Tolerance [mm]
$35 \leq L \leq 200$	± 4
$200 < L \leq 500$	± 8
$500 < L \leq 1000$	± 12
$1000 < L$	$\pm 1.5\%$

3 Connector rotation angle is within ± 45 degree from the above image. For long length in the case of $L > 500$, the angle is optional.

4. Specifications are subject to change without notice.

[DIMENSIONS OF CONNECTOR]



For stable supply of this series, material supplier of piece part#1 will be changed during 2019-2022. Please note this change in advance. There will be no difference in product performance and quality.

2	E. FL CONTACT	CL331-0411-8-11					
1	E. FL-LP-066(01)	CL331-0402-7-01	3	1.32Dia. coaxial cable			
NO.	PART NO.	CODE NO.	NO.	PART NO.			
UNITS mm		SCALE FREE	COUNT 	DESCRIPTION OF REVISIONS	DESIGNED	CHECKED	DATE
			1	DIS-D-00003764	MS. MATSUMOTO	MT. KANEKO	20181217
HIROSE ELECTRIC CO., LTD.		APPROVED : NK. NINOMIYA	20180608	DRAWING NO.			
		CHECKED : MT. KANEKO	20180608	PART NO. E. FL-2LP-066** - A-L			
		DESIGNED : MS. MATSUMOTO	20180608	CODE NO.			
		DRAWN : MS. MATSUMOTO	20180608	1/1			