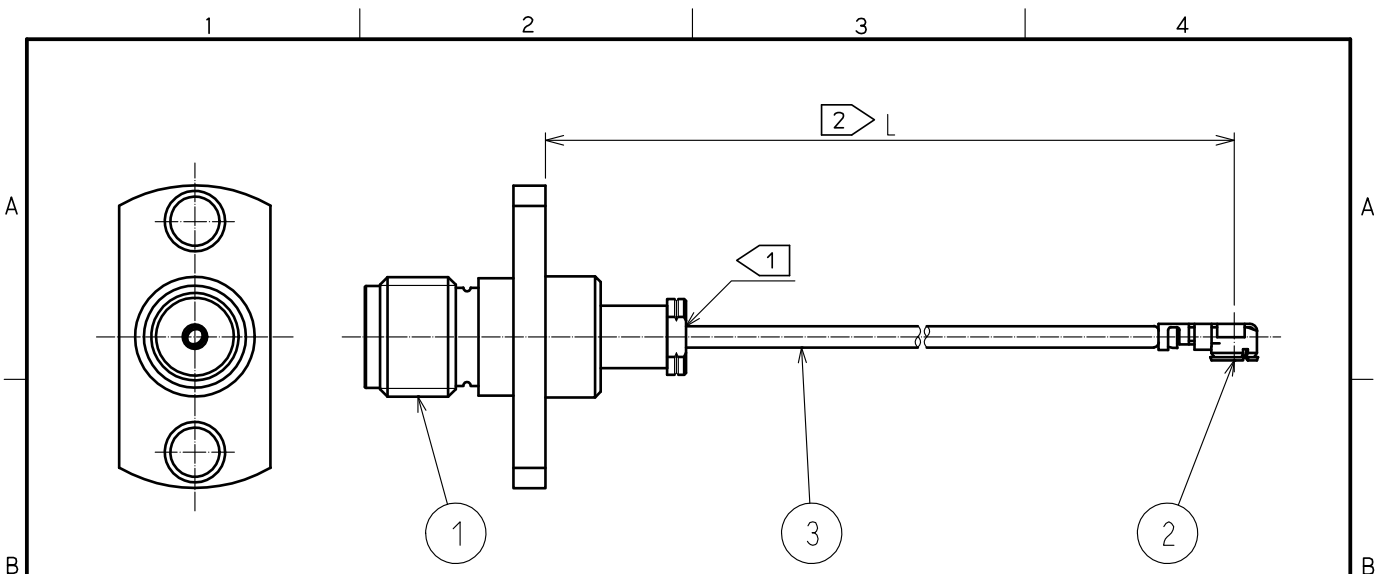


Feb.1.2025 Copyright 2025 HIROSE ELECTRIC CO., LTD. All Rights Reserved.
In case of consideration for using Automotive equipment / device which demand high reliability, kindly contact our sales window correspondents.



NOTE 1 Do not apply any excessive stress to the cable assembly position.

2 'L' at the end of the Part No. indicates the cable length.
And '*' of the Part No. indicates the cable color.

Length L (mm)	Typical (mm)	Part No.	Cable color
50 ≦ L ≦ 200	±4	~068N1T~	Gray
200 < L ≦ 500	±8	~068N2T~	Black
500 < L ≦ 1000	±12	~068N3T~	White
1000 < L	±1.5%		

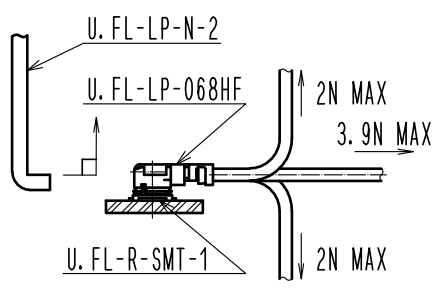
3. Connector rotation angle is within ±45 degree from the above image.

For long length in the case of L ≧ 500, the angle is optional.

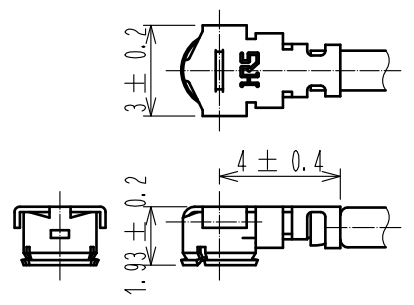
4. Specifications are subject to change without notice.

【 PRECAUTIONS FOR HANDLING 】

- ◆ Connector insertion and extraction
 - a. Connector shall be extracted vertically by specialised extraction JIG.
Part No. :U.FL-LP-N-2(CCL Code:CL331-0494-5)
Never hold the cable when extracting the cable because it damages the connector.
 - b. Insert the connector as perpendicularly to the mating surface as possible by aligning the mating axes of both connectors. Do not excessively slant the connectors when inserting.
- ◆ Allowable loads on the cable after the connectors are mated.
The figures below show the maximum allowable loads on the cable. Do not apply loads exceeding these values to the cable.



【 DIMENSIONS OF CONNECTOR 】



2	U.FL-LP-068HF	CL331-0566-4-00			
1	HRM-200-066PJ2BN(40)	CL323-0788-1-40	3	RF-MF50161 NISSEI ELECTRIC CO., LTD.	
NO.	PART NO.	CODE NO.	NO.	PART NO.	MANUFACTURER

UNITS mm		SCALE FREE	COUNT 	DESCRIPTION OF REVISIONS	DESIGNED	CHECKED	DATE
HRS HIROSE ELECTRIC CO., LTD.		APPROVED :TO. KATAYAMA 20190116	DRAWING NO. EDC-385357-00-00				
		CHECKED :TO. KATAYAMA 20190116	PART NO. HPJ2-UFLHF6-068N*T-ALRS				
		DESIGNED :NK. OOSAWA 20190116	CODE NO.				
		DRAWN :NK. OOSAWA 20190116	1/1				