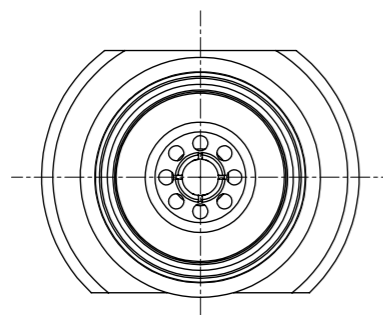
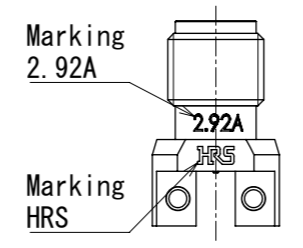


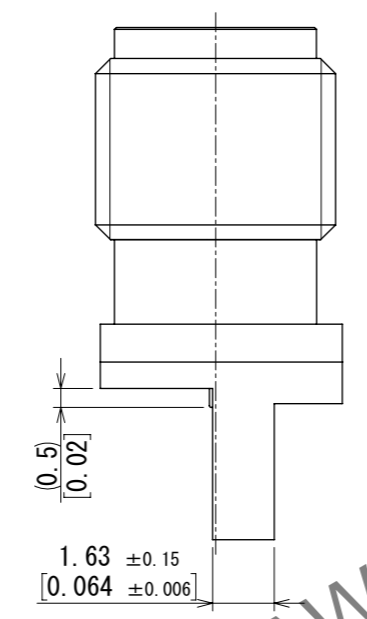
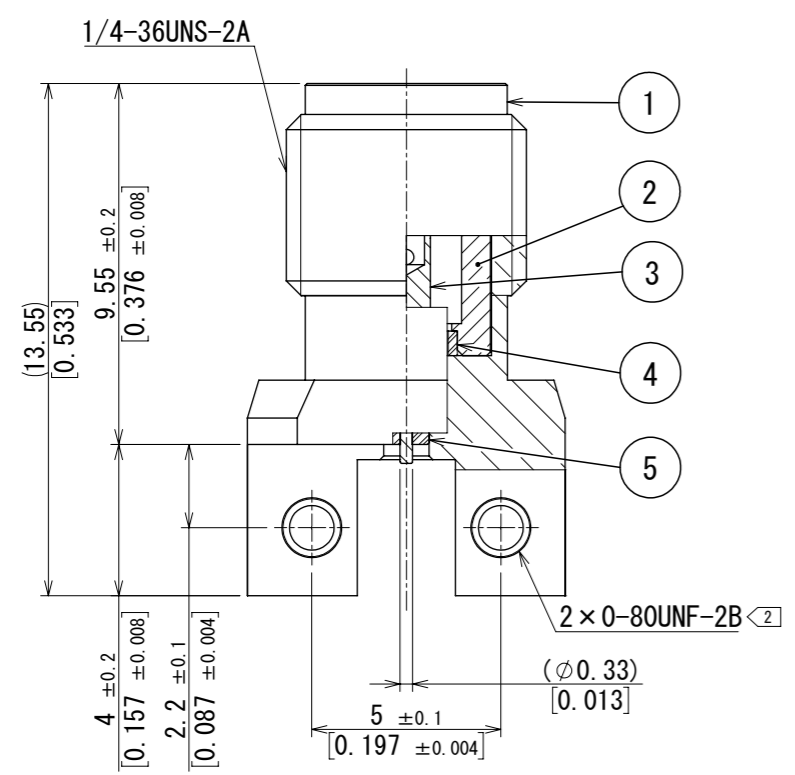
Jan.1.2025 Copyright 2025 HIROSE ELECTRIC CO., LTD. All Rights Reserved.
In case of consideration for using Automotive equipment / device which demand high reliability, kindly contact our sales window correspondents.



Marking position (2 : 1)

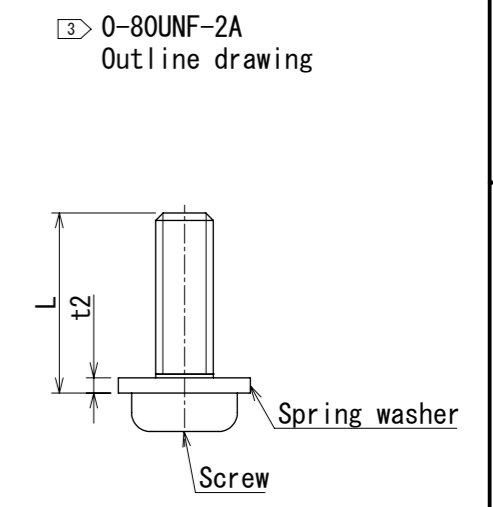
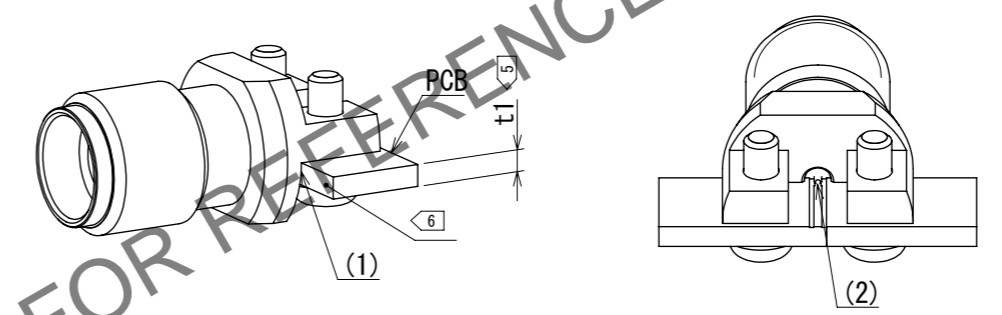


- Notes
- ① Please hold the connector flange with a spanner to avoid any torque acting on the PCB when the connector is mating.
 - ② 0-80UNF-2B screw recommended tightening torque is 0.09N · m.
Please tighten the screws evenly during the connector mounting to ensure stable electrical contact.
 - ③ Recommended length of the screws : $L = t1(\text{PCB}) + t2(\text{spring washer}) + 1.8 \text{ mm} [0.07 \text{ in}]$.
Please use a screw with spring washer.
 - ④ PCB design is changed depending on the PCB material, thickness and stackup.
For better performance, simulation of PCB with connector is recommended.
 - ⑤ PCB thickness $t1$ should be 1.0 mm [0.040 in] or more.
 - ⑥ Side plating of the board is recommended.
 7. This product is a solderless mounted connector for prototype evaluation of high speed transmission boards.
It is not recommended for use in actual commercial equipment.

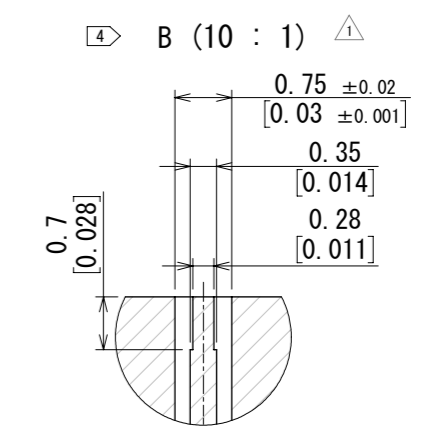
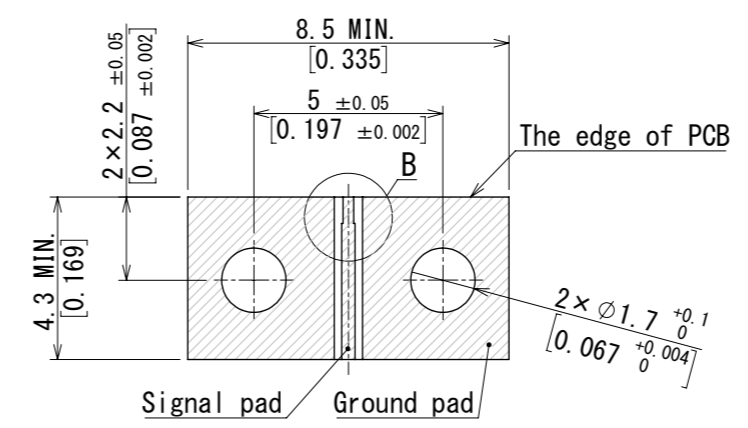


PCB mounting drawing (Free)

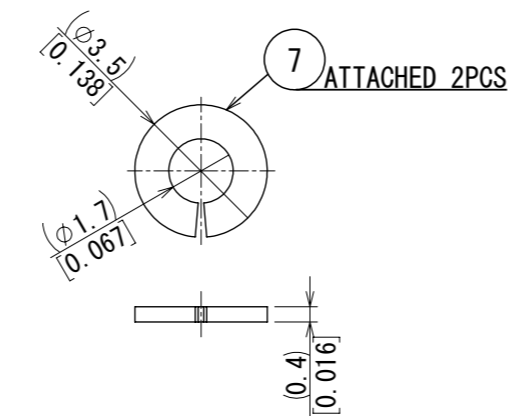
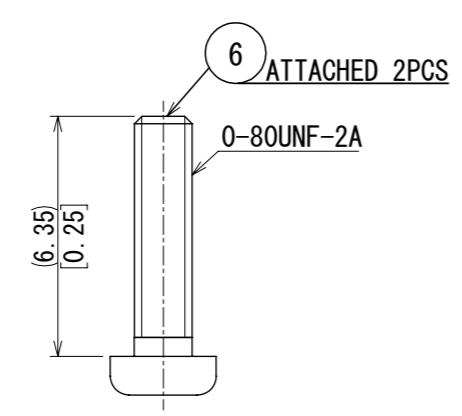
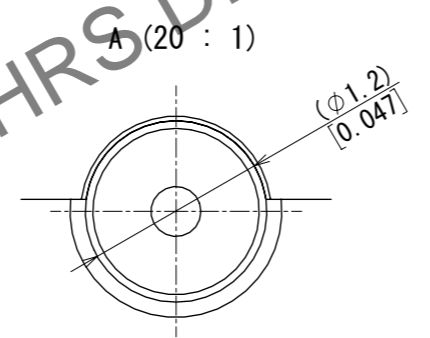
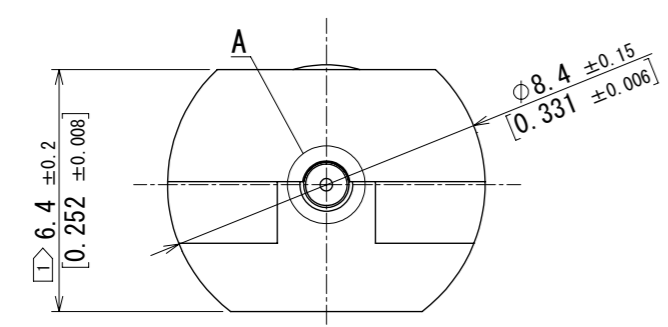
- (1) Please do not allow a gap between the edge of PCB and connector, when the connector is mounted on PCB.
- (2) Please mount the connector as located in the middle of signal pad of PCB.



Recommended land pattern drawing



Regist for signal pad and ground pad is prohibited.



4	PEI		7	STAINLESS STEEL	SPRING WASHER		
3	BERYLLIUM COPPER	GOLD PLATING	6	STEEL	0-80UNF-2A SCREW (1/4in)		
2	STAINLESS STEEL	PASSIVATE	5	PEI			
1	BRASS	NICKEL PLATING					
NO.	MATERIAL	FINISH	REMARKS	NO.	MATERIAL	FINISH	REMARKS
UNITS		SCALE		COUNT		DESCRIPTION OF REVISIONS	
mm [inch]		5:1		1		DIS-D-00018909	
APPROVED : TS. NAKAGAWA 2024.03.26				DRAWING NO. EDC-405666-11-00			
CHECKED : TS. KANEKO 2024.03.26				PART NO. HK-LR-SR2-A(11)			
DESIGNED : NM. TORIUMI 2024.03.26				CODE NO. CL0338-0015-0-11			
DRAWN : NM. TORIUMI 2024.03.26							
HRS HIROSE ELECTRIC CO., LTD.				DESIGNED NM. TORIUMI 2024.03.26			
				CHECKED TS. KANEKO 2024.03.26			
				DATE 2024.06.03			