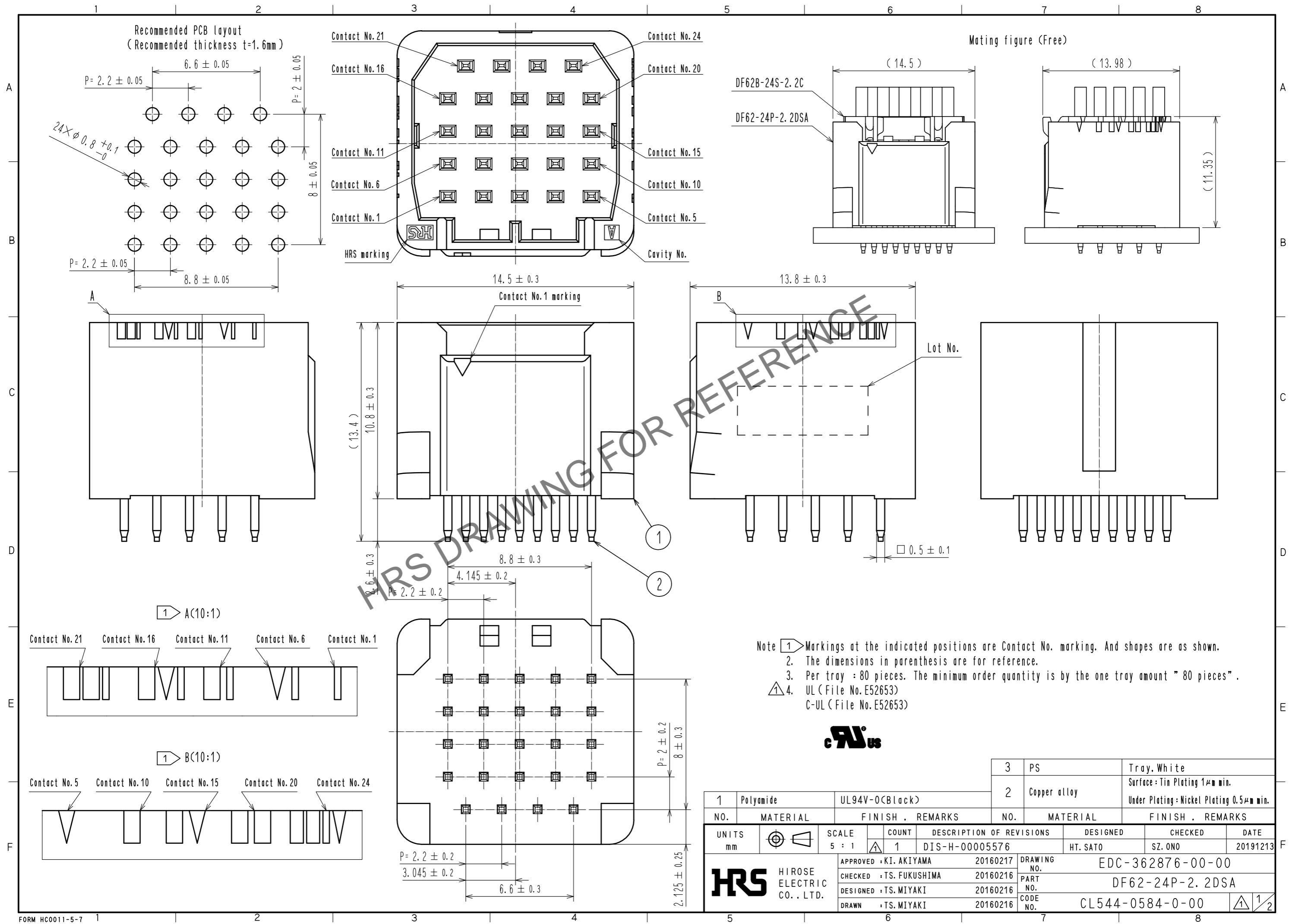


Feb.1.2025 Copyright 2025 HIROSE ELECTRIC CO., LTD. All Rights Reserved.  
 In case of consideration for using Automotive equipment / device which demand high reliability, kindly contact our sales window correspondents.

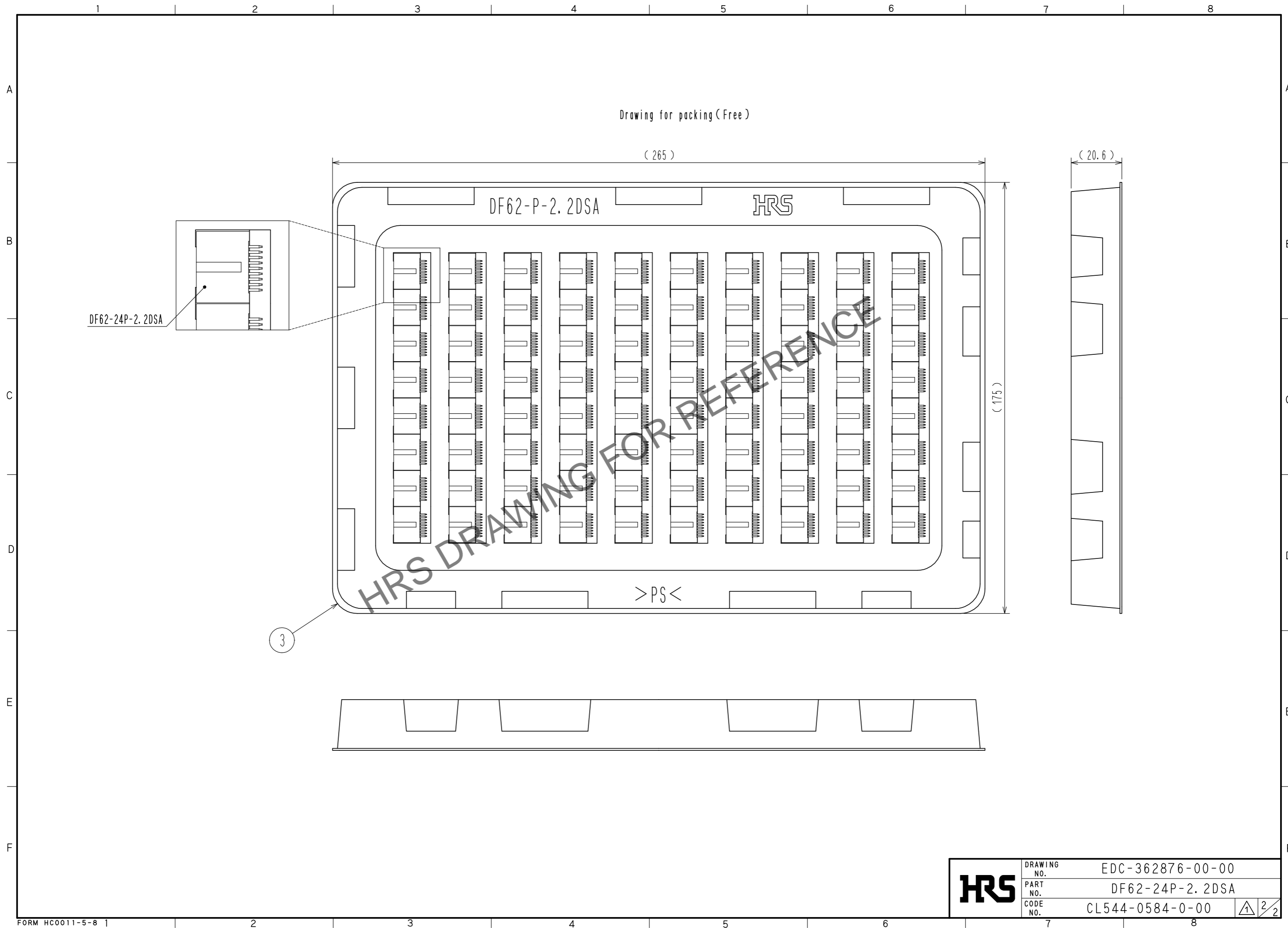


- Note
- 1 Markings at the indicated positions are Contact No. marking. And shapes are as shown.
  2. The dimensions in parenthesis are for reference.
  3. Per tray : 80 pieces. The minimum order quantity is by the one tray amount " 80 pieces".
  4. UL (File No. E52653)  
C-UL (File No. E52653)



1	Polyamide	UL94V-0(Black)	3	PS	Tray, White		
2	Copper alloy		2	Copper alloy	Surface: Tin Plating 1μm min. Under Plating: Nickel Plating 0.5μm min.		
NO.	MATERIAL	FINISH . REMARKS	NO.	MATERIAL	FINISH . REMARKS		
UNITS mm		SCALE 5 : 1	COUNT 1	DESCRIPTION OF REVISIONS DIS-H-00005576	DESIGNED HT. SATO	CHECKED SZ. ONO	DATE 20191213
<b>HRS</b> HIROSE ELECTRIC CO., LTD.		APPROVED : KI. AKIYAMA	20160217	DRAWING NO. EDC-362876-00-00			
		CHECKED : TS. FUKUSHIMA	20160216	PART NO. DF62-24P-2.2DSA			
		DESIGNED : TS. MIYAKI	20160216	CODE NO. CL544-0584-0-00			
		DRAWN : TS. MIYAKI	20160216	1/2			

Feb.1.2025 Copyright 2025 HIROSE ELECTRIC CO., LTD. All Rights Reserved.  
In case of consideration for using Automotive equipment / device which demand high reliability, kindly contact our sales window correspondents.



<b>HRS</b>	DRAWING NO.	EDC-362876-00-00
	PART NO.	DF62-24P-2.2DSA
	CODE NO.	CL544-0584-0-00

2/2