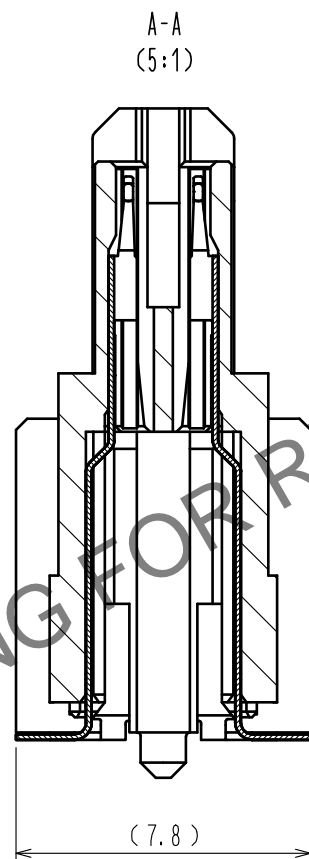
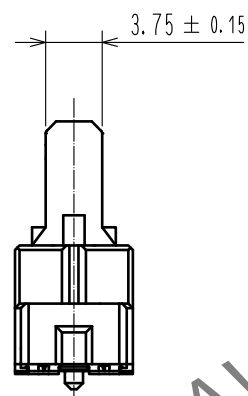
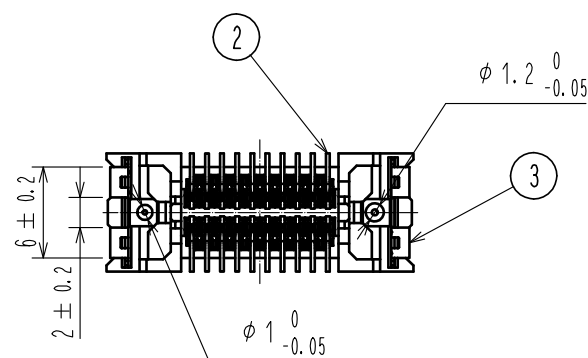
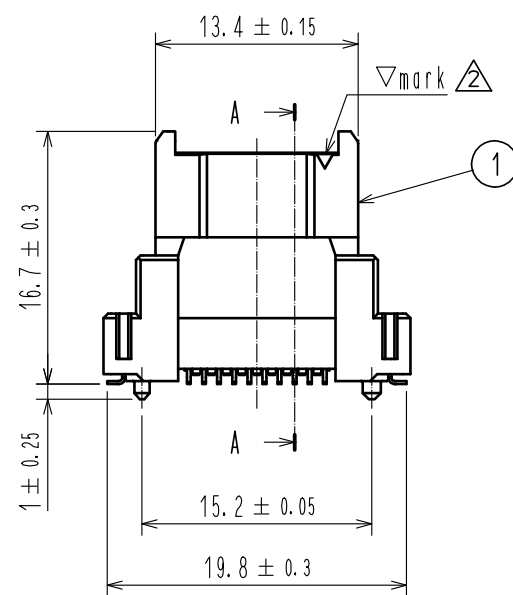
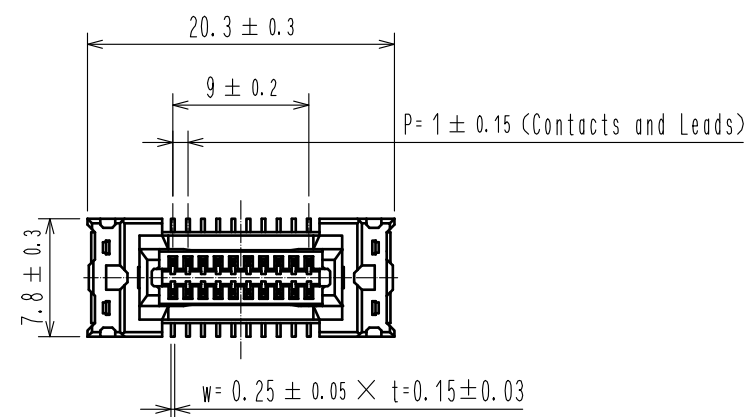
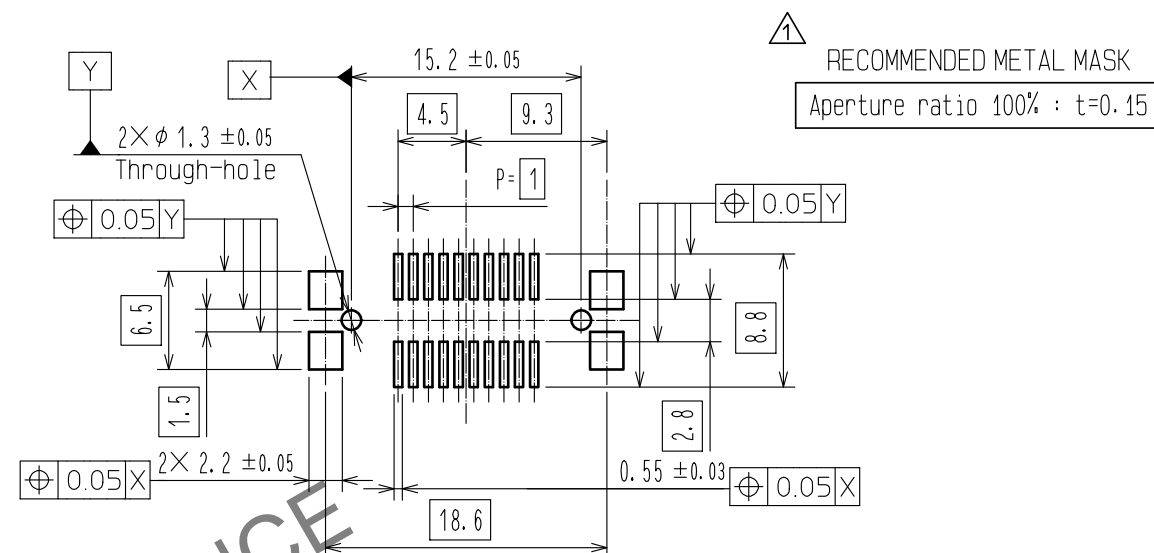


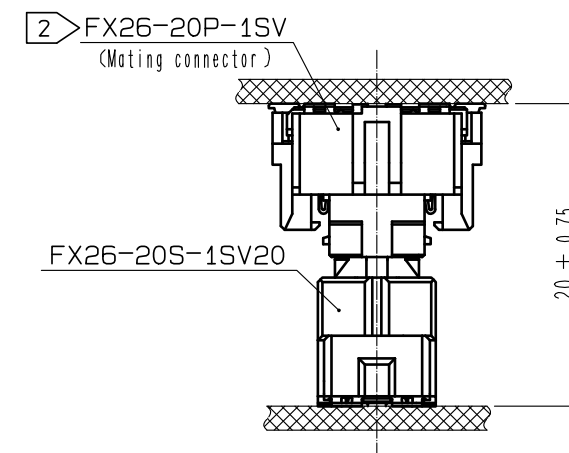
May.1.2024 Copyright 2024 HIROSE ELECTRIC CO., LTD. All Rights Reserved.
In case of consideration for using Automotive equipment / device which demand high reliability, kindly contact our sales window correspondents.



RECOMMENDED LAND PATTERN DIMENSION OF PCB



PCB DISTANCE

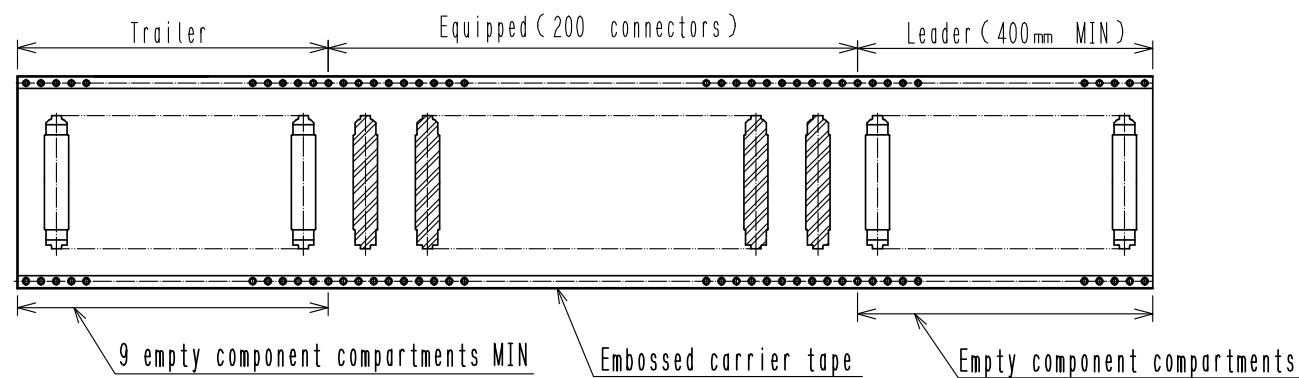
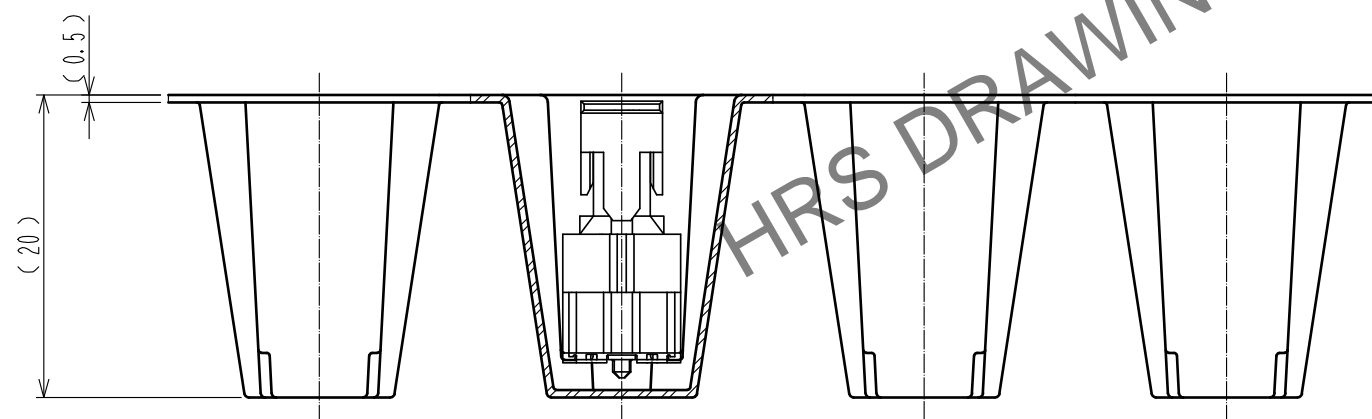
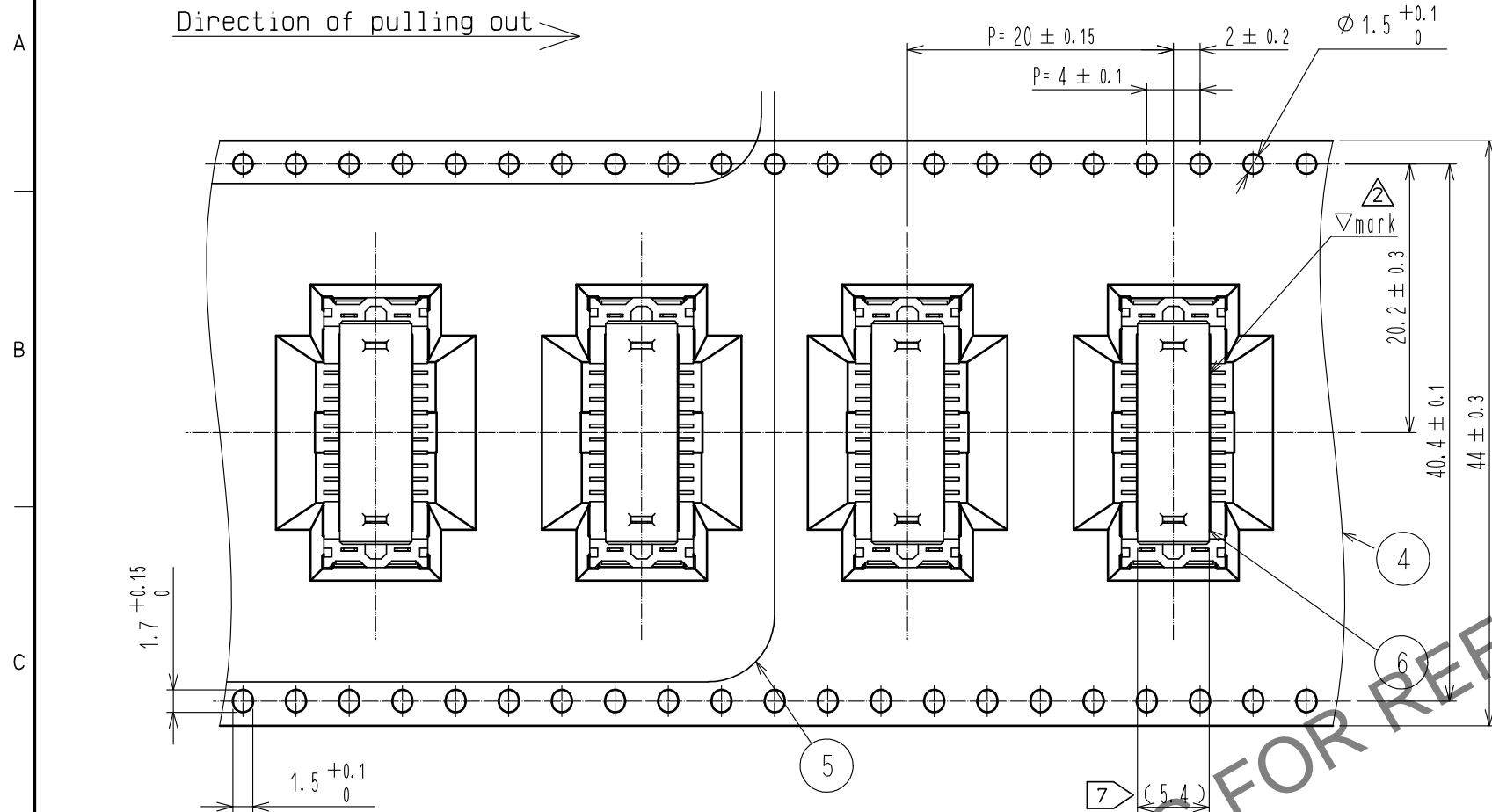


- Note
- Lead CO-Planarity is 0.1mm MAX.
 - Floating range of the mating connector is ±0.7mm MAX.
The maximum cycle time of the floating operation is in accordance with the mating cycle of the connector.
 - Please use the connectors within the specified PCB distance.
 - Blemish and hit mark can be occurred through out the manufacturing process which doesn't affect quality level.
 - The dimensions in parentheses are for references.
 - This is packaged in embossed carrier tape. (200pcs/RL)
 - It shows the vacuum pickup area.
Remove the pickup cap before mating connectors.
 - This connector has no polarity with the mating connector.

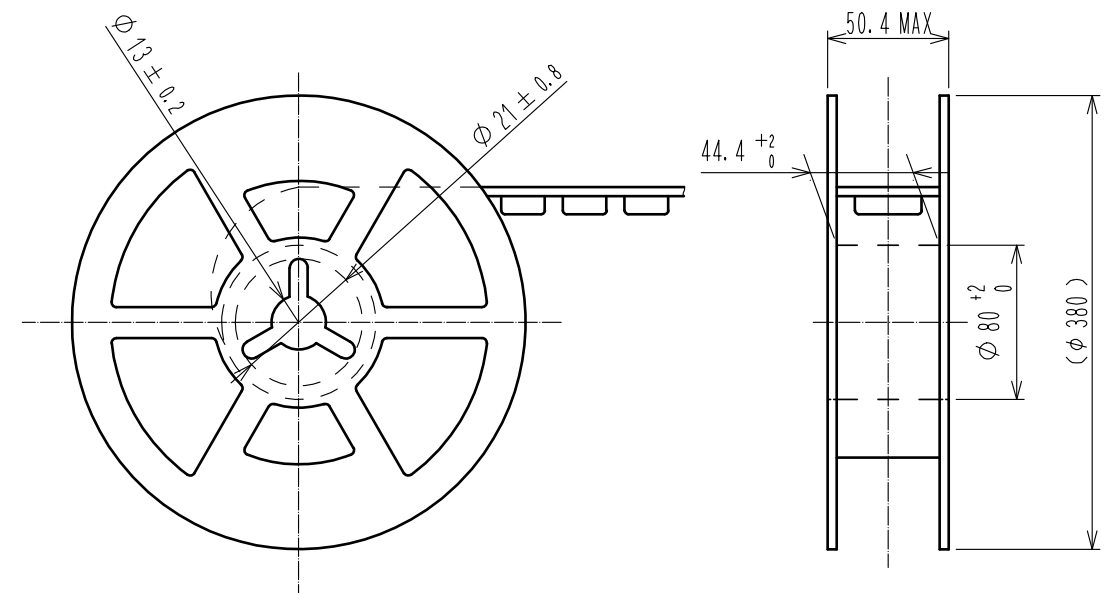
1	POLYAMIDE	BLACK UL94V-0	6	POLYAMIDE	(CAP FOR VACUUM PICKUP)
5	POLYESTER		5	POLYESTER	(EMBOSSED COVER TAPE)
4	POLYSTYRENE		4	POLYSTYRENE	(EMBOSSED CARRIER TAPE)
3	PHOSPHOR BRONZE	OVER PLATING : TIN-PLATING 1μm UNDER PLATING: NICKEL 0.5μm	3	PHOSPHOR BRONZE	OVER PLATING : TIN-PLATING 1μm UNDER PLATING: NICKEL 0.5μm
2	COPPER ALLOY	CONTACT AREA : GOLD 0.1μm LEAD AREA : GOLD 0.03μm UNDER PLATING: NICKEL 1μm	2	COPPER ALLOY	CONTACT AREA : GOLD 0.1μm LEAD AREA : GOLD 0.03μm UNDER PLATING: NICKEL 1μm
NO.	MATERIAL	FINISH . REMARKS	NO.	MATERIAL	FINISH . REMARKS
UNITS mm		SCALE 2 : 1	COUNT 2	DESCRIPTION OF REVISIONS DIS-F-00006551	DESIGNED KI. YAMAZAKI
HIROSE ELECTRIC CO., LTD.		APPROVED : HH. SHINDO	20191007	DRAWING NO.	EDC-376648-00-00
		CHECKED : KN. SHIBUYA	20191007	PART NO.	FX26-20S-1SV20
		DESIGNED : TK. ABE	20191007	CODE NO.	CL576-1302-0-00
		DRAWN : KI. YAMAZAKI	20191007		
				DATE	20200831

May.1.2024 Copyright 2024 HIROSE ELECTRIC CO., LTD. All Rights Reserved.
In case of consideration for using Automotive equipment / device which demand high reliability, kindly contact our sales window correspondents.

6 DRAWING FOR PACKING(2:1)



REEL DIMENSION(No scale)



HRS

DRAWING NO.	EDC-376648-00-00
PART NO.	FX26-20S-1SV20
CODE NO.	CL576-1302-0-00

2/2