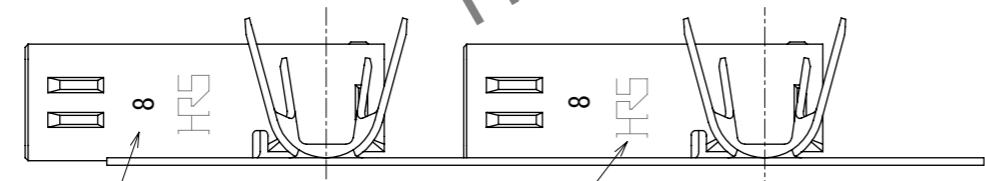
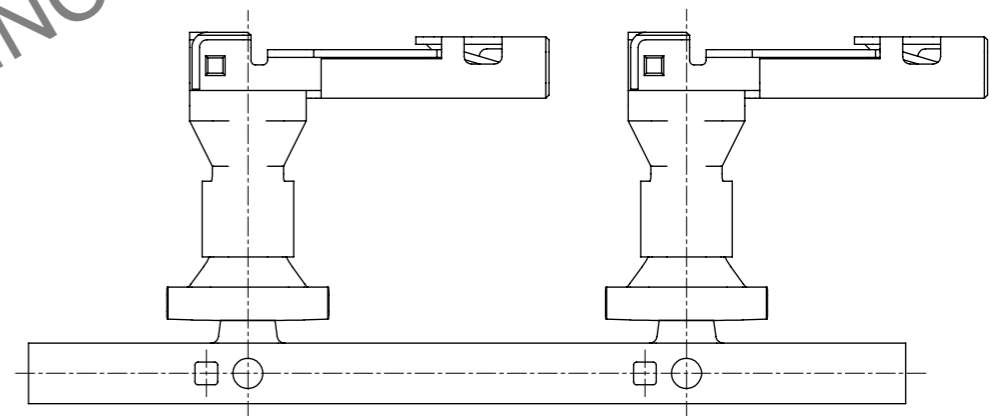
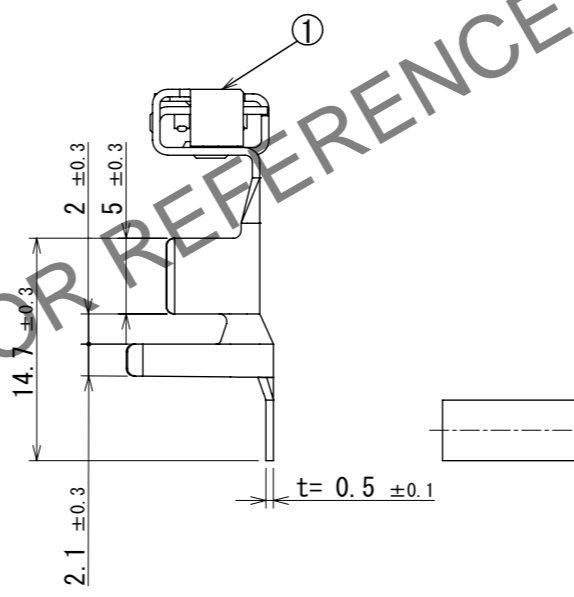
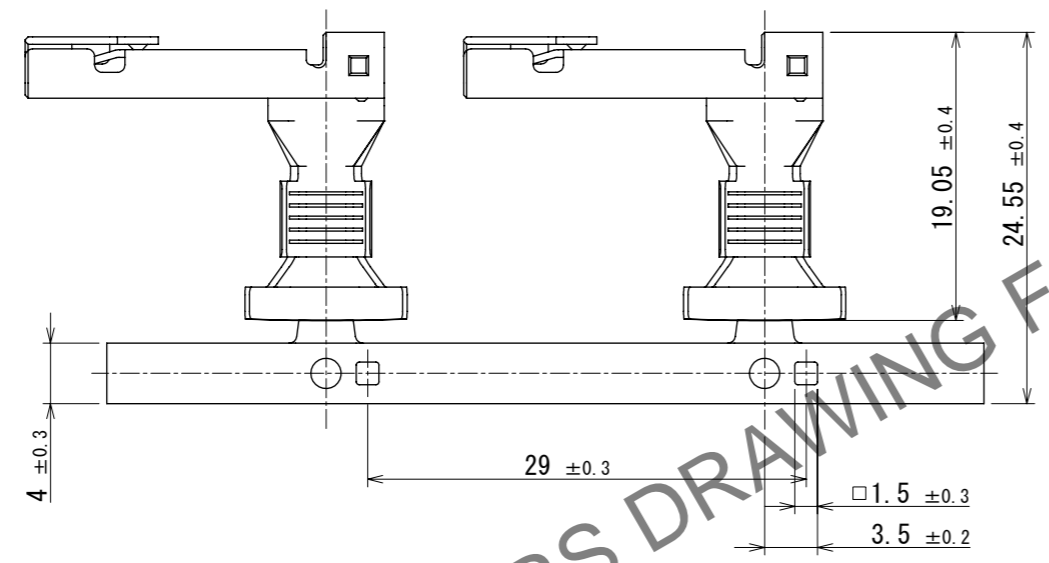
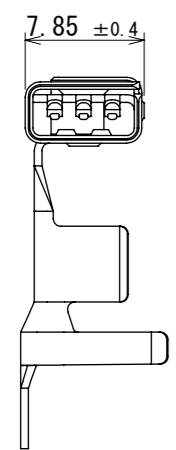
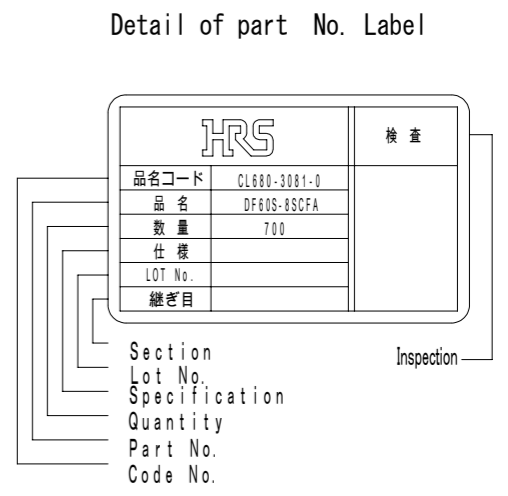
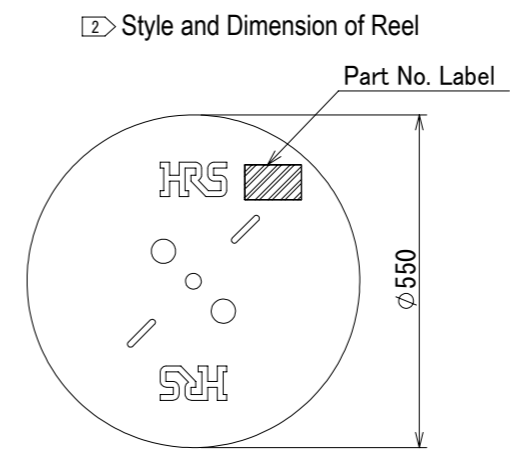
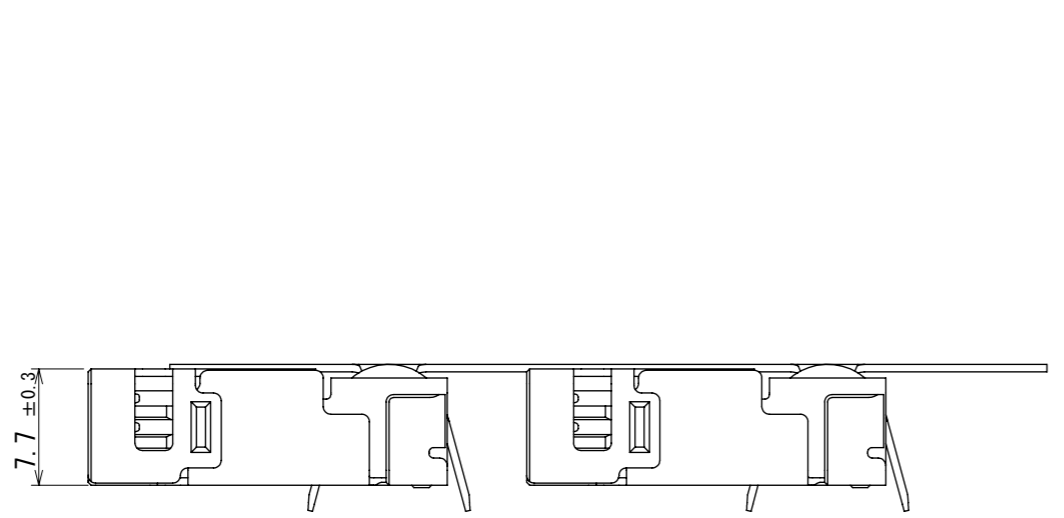


Feb.1.2025 Copyright 2025 HIROSE ELECTRIC CO., LTD. All Rights Reserved.  
 In case of consideration for using Automotive equipment / device which demand high reliability, kindly contact our sales window correspondents.



HRS DRAWING FOR REFERENCE

- Note 1. 1RL:700 Contacts.  
 ② Style of reel shows in figure.  
 3. Please make sure to check this form of crimping using a cable in adjusting an applicator.  
 4. Applicable cable is 8 AWG.  
 5. Refer to the technical specification (ETAP-H1184-00) for the packing type.  
 ⚠ 6. Please refer to the technical specification (ETAD-H0654-00, ETAD-H0653-00, ETAD-H1042-00) for handling.

1	Copper alloy	Contact area : Au plating 0.2μm min Wire barrel area : Sn plating 1 μm min Under plating : Ni plating 1 μm min
NO.	MATERIAL	FINISH , REMARKS

UNITS mm		SCALE 2:1	COUNT 1	DESCRIPTION OF REVISIONS DIS-H-00019384	DESIGNED SN. MIWA	CHECKED TT. OHSAKO	DATE 2023. 10. 31
HIROSE ELECTRIC CO., LTD.		APPROVED : SJ. OKAMURA 2023. 10. 19	DRAWING NO. EDC-402083-00-00				
		CHECKED : TT. OHSAKO 2023. 10. 19	PART NO. DF60S-8SCFA				
		DESIGNED : KT. NUMATA 2023. 10. 18	CODE NO. CL0680-3081-0-00				
		DRAWN : SK. CHIBA 2023. 10. 18					