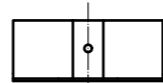
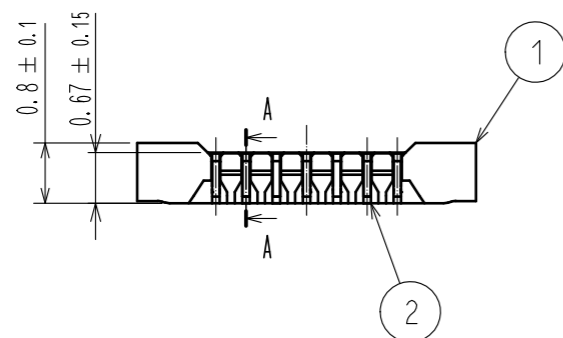
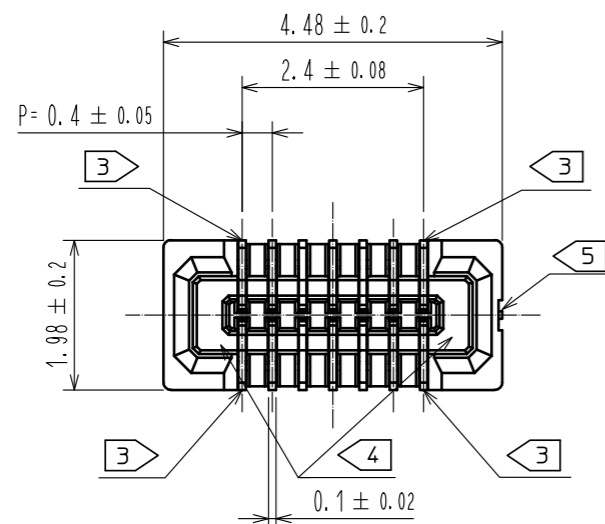
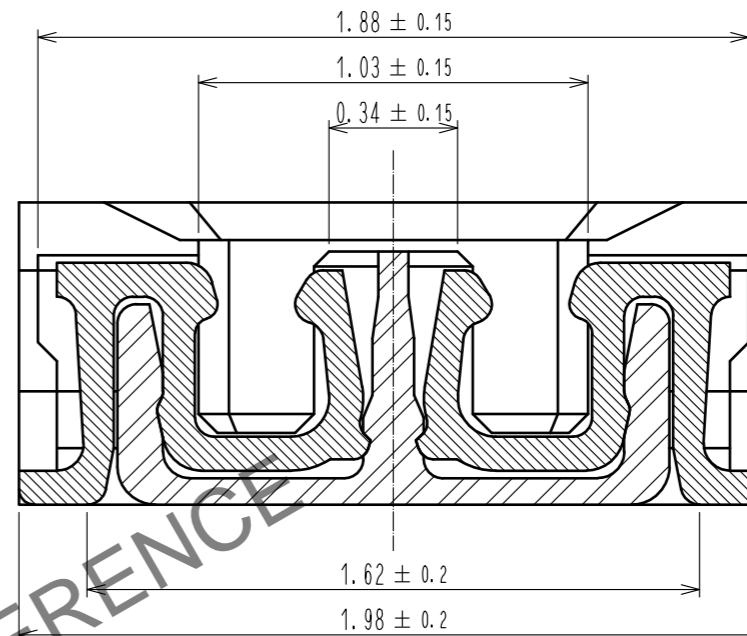


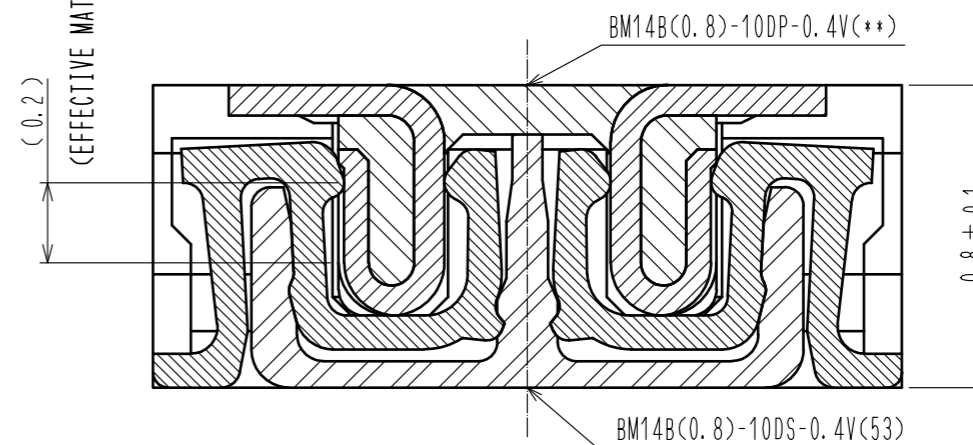
Jun.1.2026 Copyright 2026 HIROSE ELECTRIC CO., LTD. All Rights Reserved.  
In case of consideration for using Automotive equipment / device which demand high reliability, kindly contact our sales window correspondents.



A-A (50:1)



ENGAGEMENT FIGURE (50:1)



NOTE) 1 . ALL LEAD CO-PLANARITY SHALL BE 0.08mm MAX

2 CONTACT PLATING SPECIFICATIONS.

CONTACT AREA : GOLD 0.05 μm MIN

SMT LEAD : GOLD 0.05 μm MIN

UNDERPLATING : NICKEL 1 μm MIN

( SURFACE : SEALING )

3 EACH CONTACTS AT 4 CORNERS ARE PROVIDED FOR METAL FITTINGS AND GROUNDING PURPOSE.

4 HRS MARK AND CAV NO. ARE INDICATED IN APPROX POSITION SHOWN.

5 GATE POSITION IS INDICATED IN APPROX POSITION SHOWN.

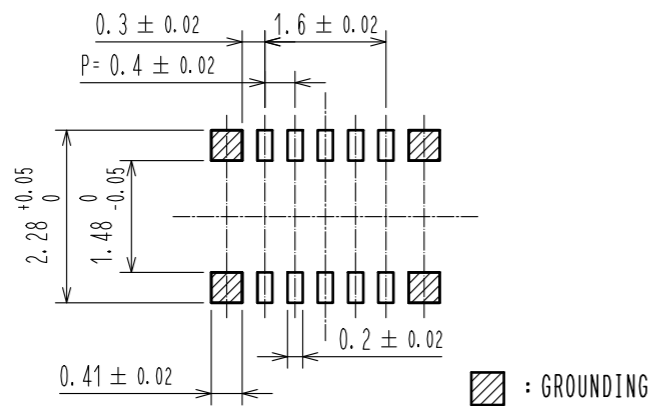
| 3   | PS              | CLEAR (ENBOSSED CARRIER TAPE) | 6   | PS        | CLEAR (REINFORCEMENT COLLAR) |
|-----|-----------------|-------------------------------|-----|-----------|------------------------------|
| 2   | PHOSPHOR BRONZE | 2                             | 5   | PS        | BLACK (PLASTIC REEL)         |
| 1   | LCP             | UL94 V-0, BLACK               | 4   | POLYESTER | CLEAR (COVER TAPE)           |
| NO. | MATERIAL        | FINISH . REMARKS              | NO. | MATERIAL  | FINISH . REMARKS             |

|                                      |  |                          |            |                          |                          |         |      |
|--------------------------------------|--|--------------------------|------------|--------------------------|--------------------------|---------|------|
| UNITS<br>mm                          |  | SCALE<br>10:1            | COUNT<br>1 | DESCRIPTION OF REVISIONS | DESIGNED                 | CHECKED | DATE |
| <b>HRS</b> HIROSE ELECTRIC CO., LTD. |  | APPROVED : MO. ISHIDA    | 17.01.19   | DRAWING NO.              | EDC-319838-53-00         |         |      |
|                                      |  | CHECKED : TS. MIYAZAKI   | 17.01.19   | PART NO.                 | BM14B(0.8)-10DS-0.4V(53) |         |      |
|                                      |  | DESIGNED : NY. YAMASHIRO | 17.01.19   | CODE NO.                 | CL684-8003-5-53          |         |      |
|                                      |  | DRAWN : SN. NUMAZAKI     | 17.01.18   |                          | 1/3                      |         |      |

HRS DRAWING FOR REFERENCE

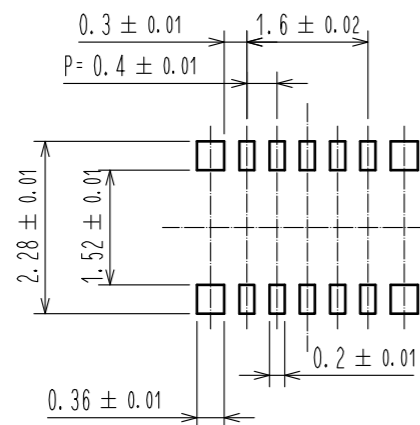
Jun.1.2026 Copyright 2026 HIROSE ELECTRIC CO., LTD. All Rights Reserved.  
 In case of consideration for using Automotive equipment / device which demand high reliability, kindly contact our sales window correspondents.

◆ RECOMMENDED PCB LAYOUT

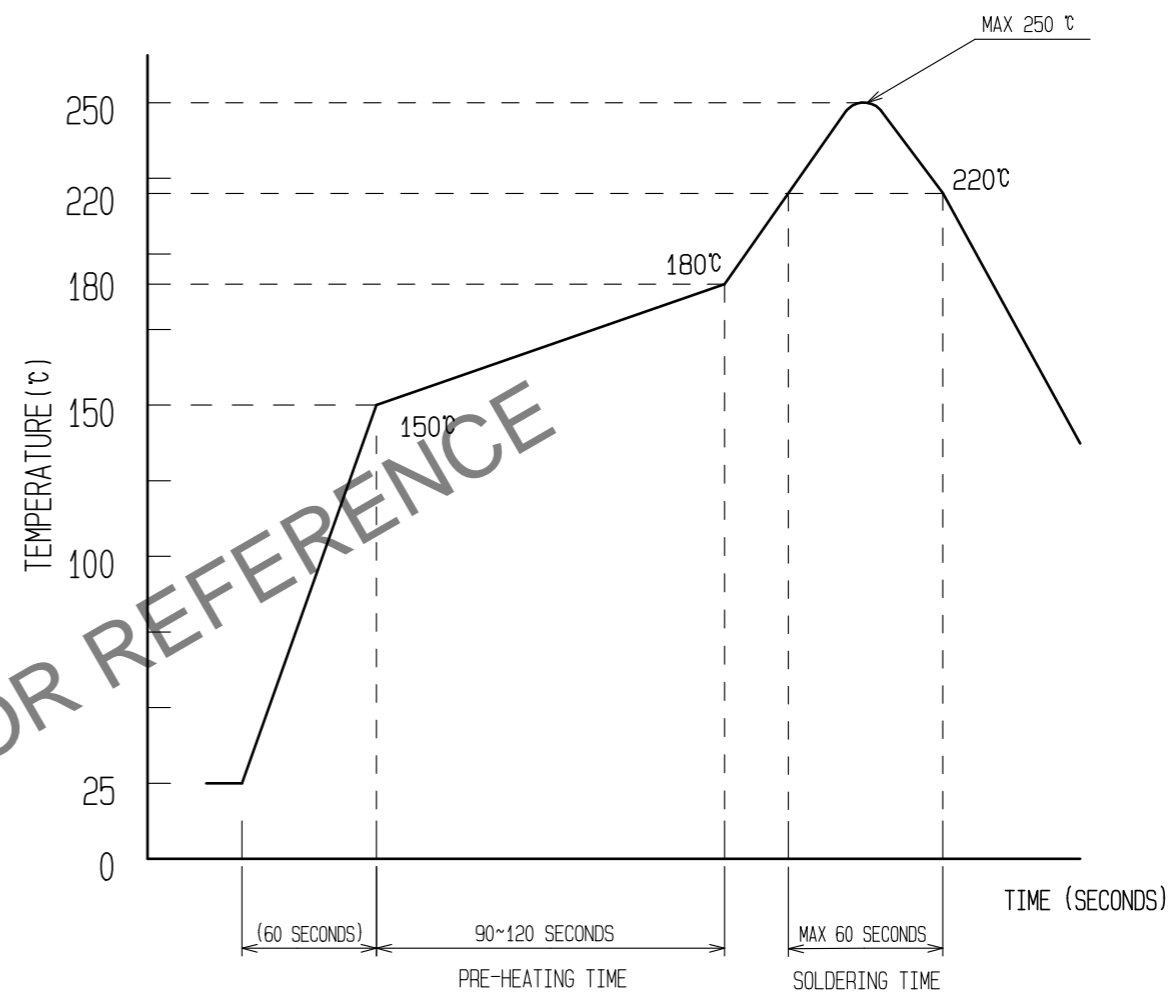


◆ RECOMMENDED METAL MASK DIMENSIONS

METAL MASK THICKNESS : 100 μm



⑥ RECOMMENDED REFLOW TEMPERATURE PROFILE USING LEAD-FREE SOLDER PASTE.



- REFLOW METHOD: IR REFLOW  
 NUMBER OF REFLOW CYCLES: 2 CYCLES MAX.  
 1) REFLOW TIME  
 DURATION ABOVE 220°C, 60 SEC. MAX.  
 (PEAK TEMPERATURE: 250°C MAX)  
 2) PRE-HEAT TIME  
 PRE-HEAT TEMPERATURE(MIN): 150°C  
 PRE-HEAT TEMPERATURE(MAX): 180°C  
 PRE-HEAT TIME: 90-120 sec.

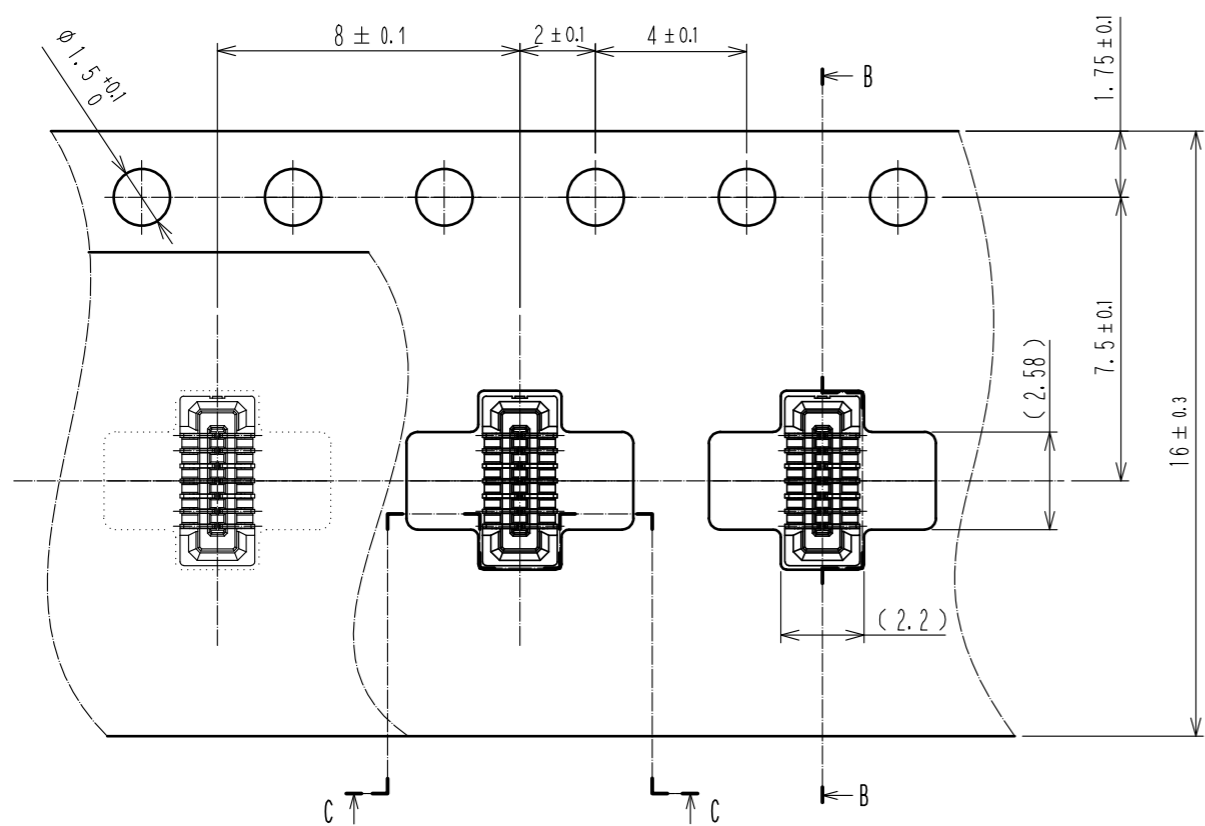
⑥ THIS TEMPERATURE PROFILE IS PER THE CONDITIONS SHOWN ABOVE. ADDITIONAL FACTORS, SUCH AS SOLDER PASTE TYPE, PCB SIZE AND OTHER MOUNTED COMPONENTS COULD AFFECT THE PROFILE, THEREFORE, A THOROUGH EVALUATION OF MOUNTING CONDITION IS REQUIRED PRIOR TO PRODUCTION. TEMPERATURE IS MEASURED AT CONTACT LEAD.

|            |             |                          |
|------------|-------------|--------------------------|
| <b>HRS</b> | DRAWING NO. | EDC-319838-53-00         |
|            | PART NO.    | BM14B(0.8)-10DS-0.4V(53) |
|            | CODE NO.    | CL684-8003-5-53          |

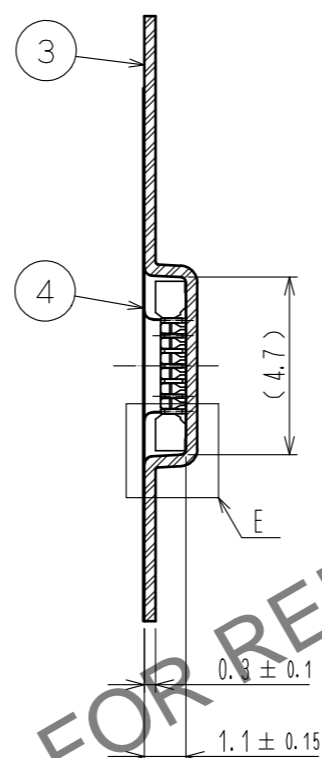
2/3

Jun.1.2026 Copyright 2026 HIROSE ELECTRIC CO., LTD. All Rights Reserved.  
In case of consideration for using Automotive equipment / device which demand high reliability, kindly contact our sales window correspondents.

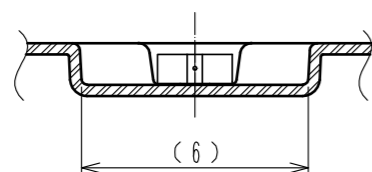
# EMBOSSED CARRIER TAPE PACKAGING (5:1)



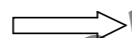
B-B (5:1)



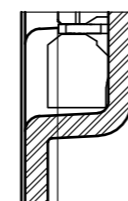
C-C (5:1)



DIRECTION OF UNREELING

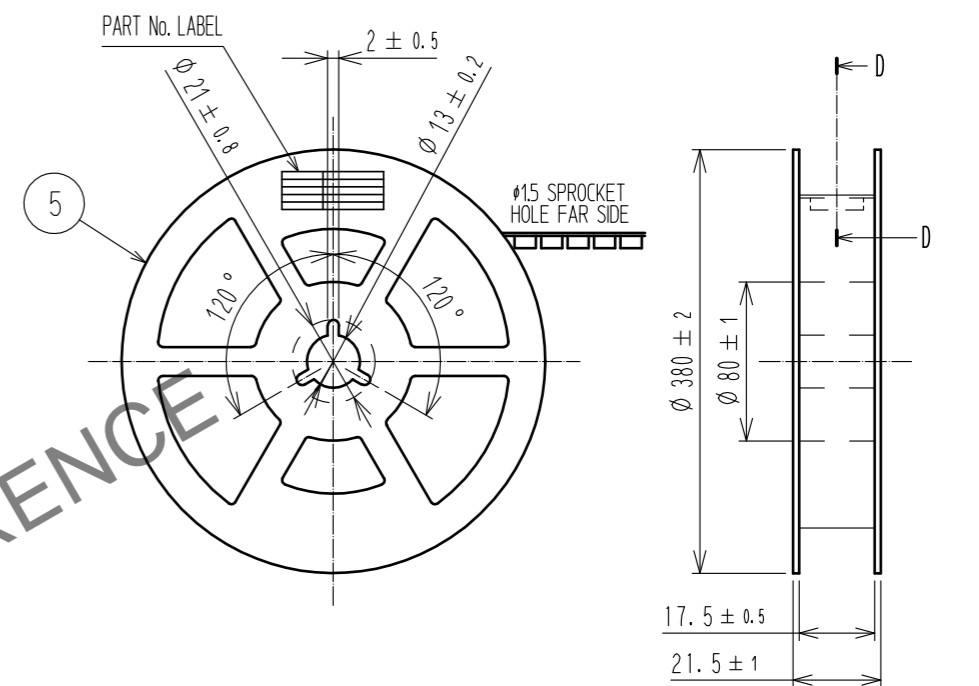


E(10:1)

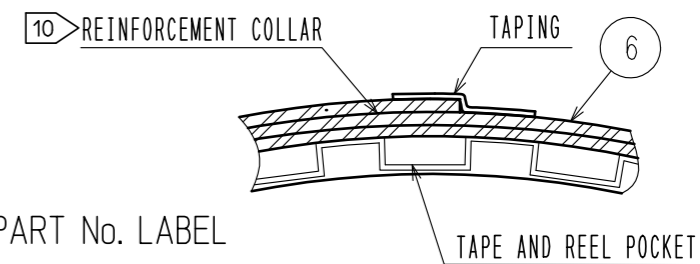


PICK UP AREA : ( 0.13 )

# STYLE AND DIMENTION OF REEL (FREE)



D-D (FREE)



## DETAIL OF PART No. LABEL

- SUPPLIER
- QUANTITY
- PART No.
- CODE No.
- DATE OF MANUFACTURED

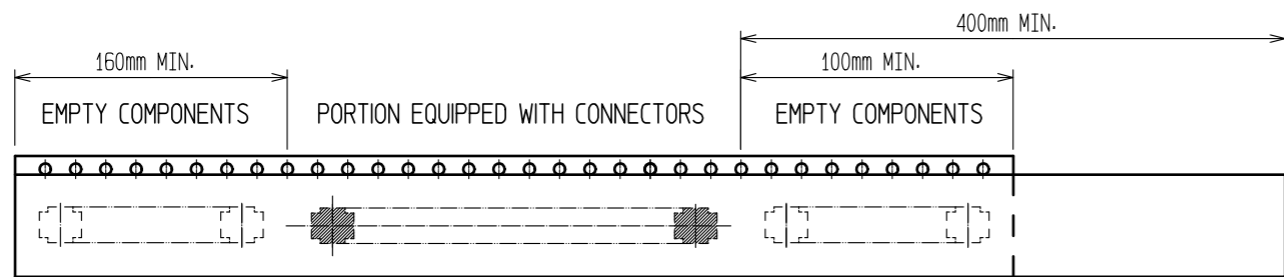
|       |                          |
|-------|--------------------------|
| 製造年月日 | ** ** *                  |
| 製品コード | CL684-8003-5-53          |
| 製品名   | BM14B(0.8)-10DS-0.4V(53) |
| 数量    | 1,000                    |
| 納入者   | ヒロセ電機(株)                 |

7. PER REEL 1000 CONNECTORS.

8. THE DIMENSIONS IN PARENTHESES ARE FOR REFERENCE.

9 REFER TO JIS C 0806(PACKAGING OF COMPONENTS FOR AUTOMATIC HANDLING)

10 AFTER PACKAGING, ROLL 2 METERS OF THE REINFORCEMENT COLLAR TO OUTER CIRCUMFERENCE OF TAPE AND REEL POCKET, AND TAPE DOWN AT THE END THE COLLAR.



TRAILER

9 TAPING (FREE)

LEADER

|            |             |                          |
|------------|-------------|--------------------------|
| <b>HRS</b> | DRAWING NO. | EDC-319838-53-00         |
|            | PART NO.    | BM14B(0.8)-10DS-0.4V(53) |
|            | CODE NO.    | CL684-8003-5-53          |