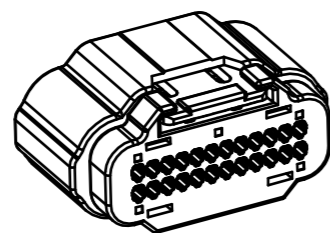
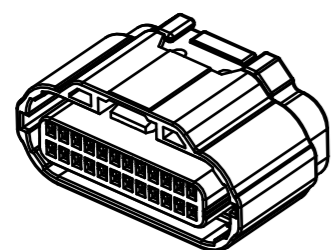
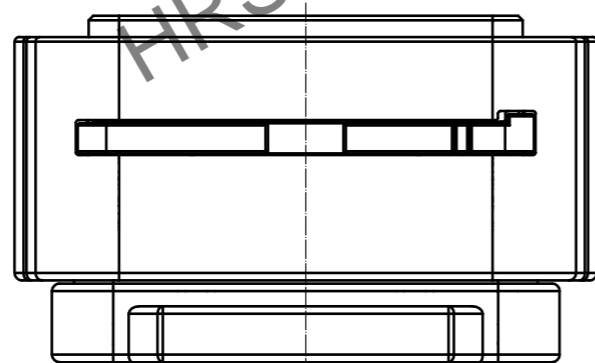
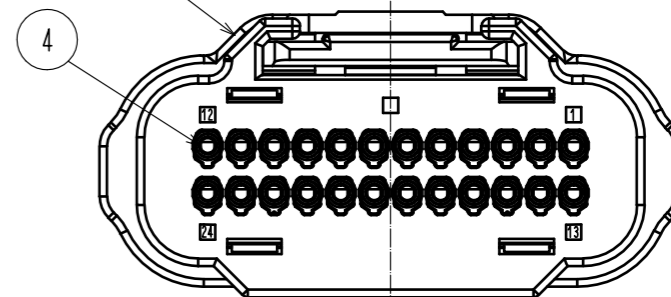
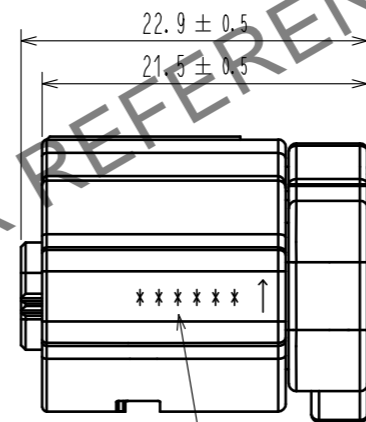
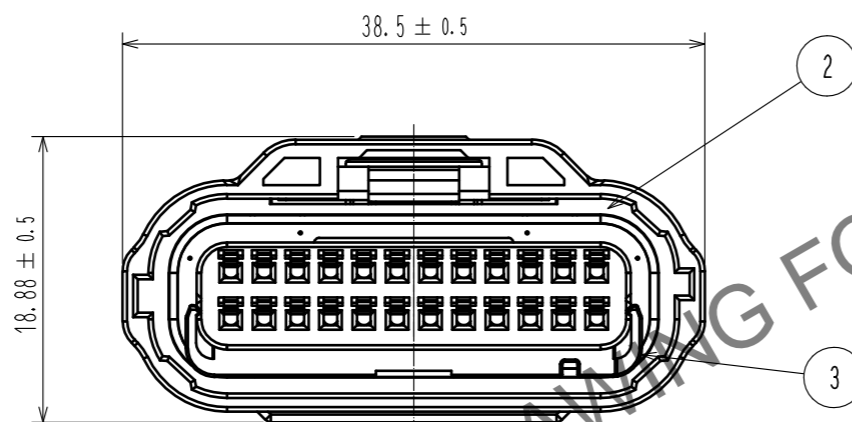
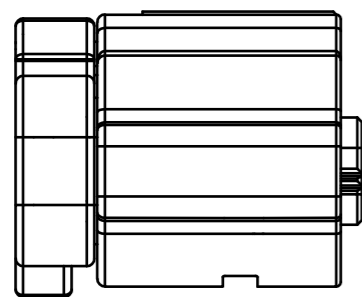
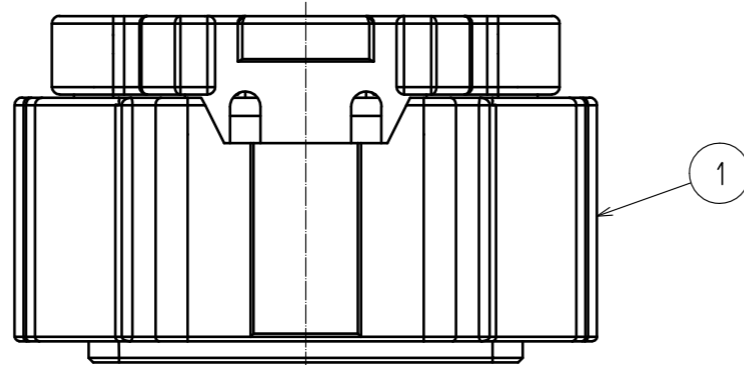
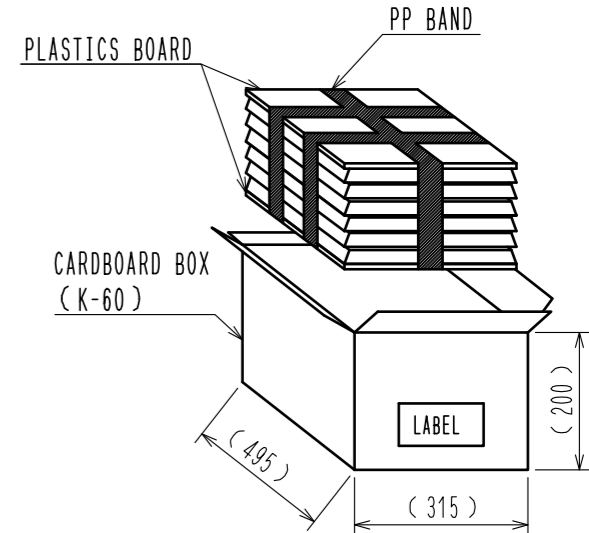


Mar.1.2026 Copyright 2026 HIROSE ELECTRIC CO., LTD. All Rights Reserved.
In case of consideration for using Automotive equipment / device which demand high reliability, kindly contact our sales window correspondents.

ELV. RoHS COMPLIANT

⚠ Delete pages 2-5

③ PACKING STYLE



NOTE 1. APPLICABLE MATING CONNECTOR : ZE064W-24DP-HU/R(C)

2. THE APPLICABLE PARTS ARE AS FOLLOWS.

CRIMP CONTACT : ZE064-2022SCF

WATERPROOF CAP : ZE064W-WCP(2022)

③ MAXIMUM NUMBER OF PRODUCT PER BOX : 55 PCS PER TRAY × 5 LAYERS = 275 PCS.
PUT AN EMPTY TRAY ON THE TOP ROW.

⚠ 4. BEFORE USE, BE SURE TO REFER TO THE INSTRUCTION MANUAL ETAD-T0644-00.

NO.	MATERIAL	FINISH	REMARKS	NO.	MATERIAL	FINISH	REMARKS
3	PA	BEIGE	UL94 V-0				
2	SILICONE	RED	OIL BLEED ⚠	5	PBT	GRAY	UL94 V-0
1	PA	BLACK	UL94 V-0	4	SILICONE	RED	OIL BLEED ⚠

UNITS	SCALE	COUNT	DESCRIPTION OF REVISIONS	DESIGNED	CHECKED	DATE
mm	2 : 1	4	DIS-T-00016740	TY. MOGI	AH. EDASHIGE	20230124

APPROVED	CHECKED	DESIGNED	DRAWN	DRAWING NO.	PART NO.	CODE NO.
HK. UMEHARA	HH. TSUKUMO	AS. SHIBAHARA	GYEONGMIN LEE	20180613	20180613	20180613
				EDC-374259-00-00	ZE064W-24DS-HU/R(C)	CL0753-2005-0-00