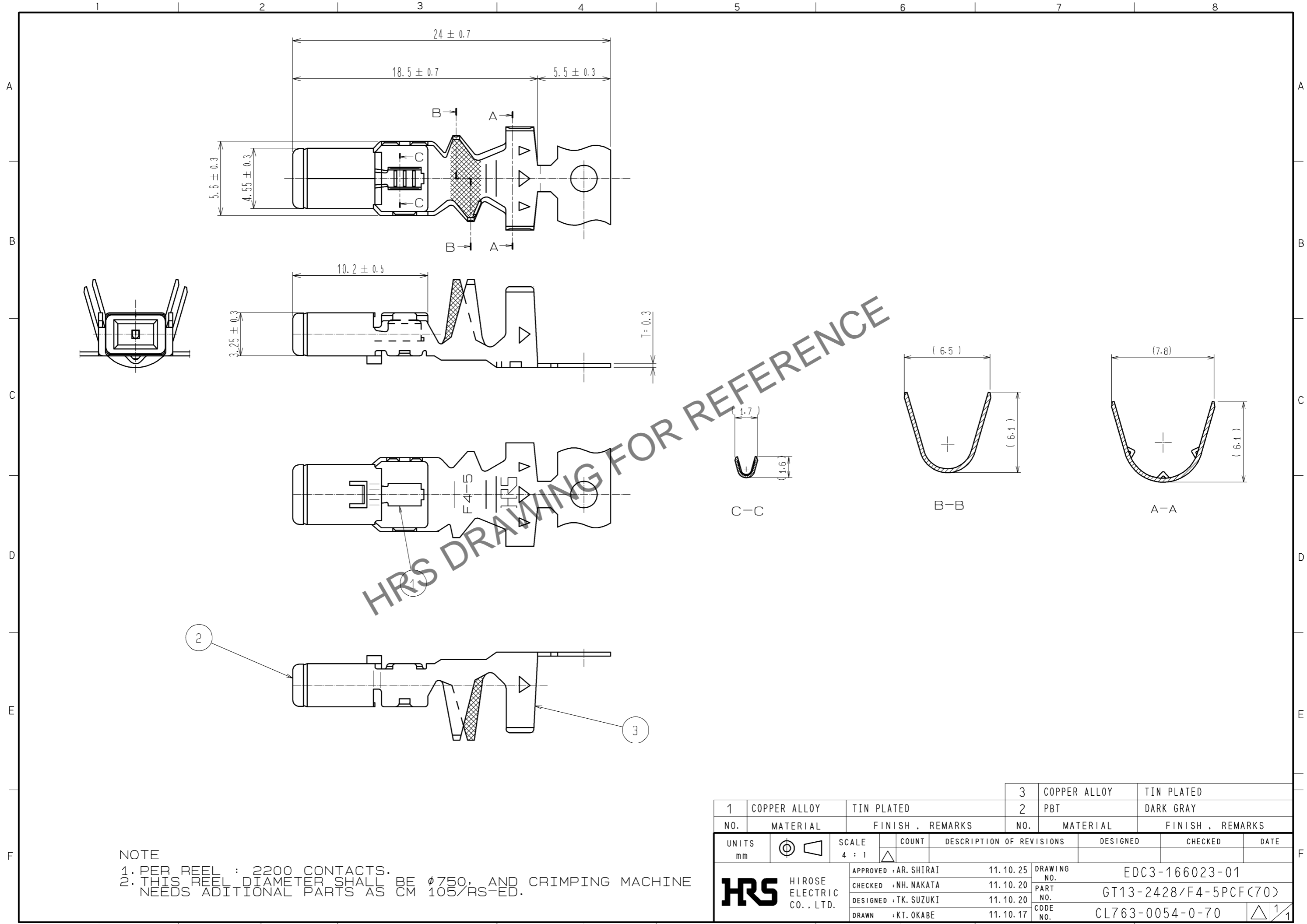


May.1.2026 Copyright 2026 HIROSE ELECTRIC CO., LTD. All Rights Reserved.
 In case of consideration for using Automotive equipment / device which demand high reliability, kindly contact our sales window correspondents.



NOTE
 1. PER REEL : 2200 CONTACTS.
 2. THIS REEL DIAMETER SHALL BE $\phi 750$. AND CRIMPING MACHINE NEEDS ADDITIONAL PARTS AS CM 105/RS-ED.

1	COPPER ALLOY	TIN PLATED	3	COPPER ALLOY	TIN PLATED
2	PBT	DARK GRAY	2	PBT	DARK GRAY
NO.	MATERIAL	FINISH . REMARKS	NO.	MATERIAL	FINISH . REMARKS
UNITS		SCALE	COUNT	DESCRIPTION OF REVISIONS	
mm		4 : 1	Δ	DESIGNED	CHECKED
APPROVED : AR. SHIRAI			11.10.25	DRAWING NO. EDC3-166023-01	
CHECKED : NH. NAKATA			11.10.20	PART NO. GT13-2428/F4-5PCF(70)	
DESIGNED : TK. SUZUKI			11.10.20	CODE NO. CL763-0054-0-70	
DRAWN : KT. OKABE			11.10.17	Δ 1/1	