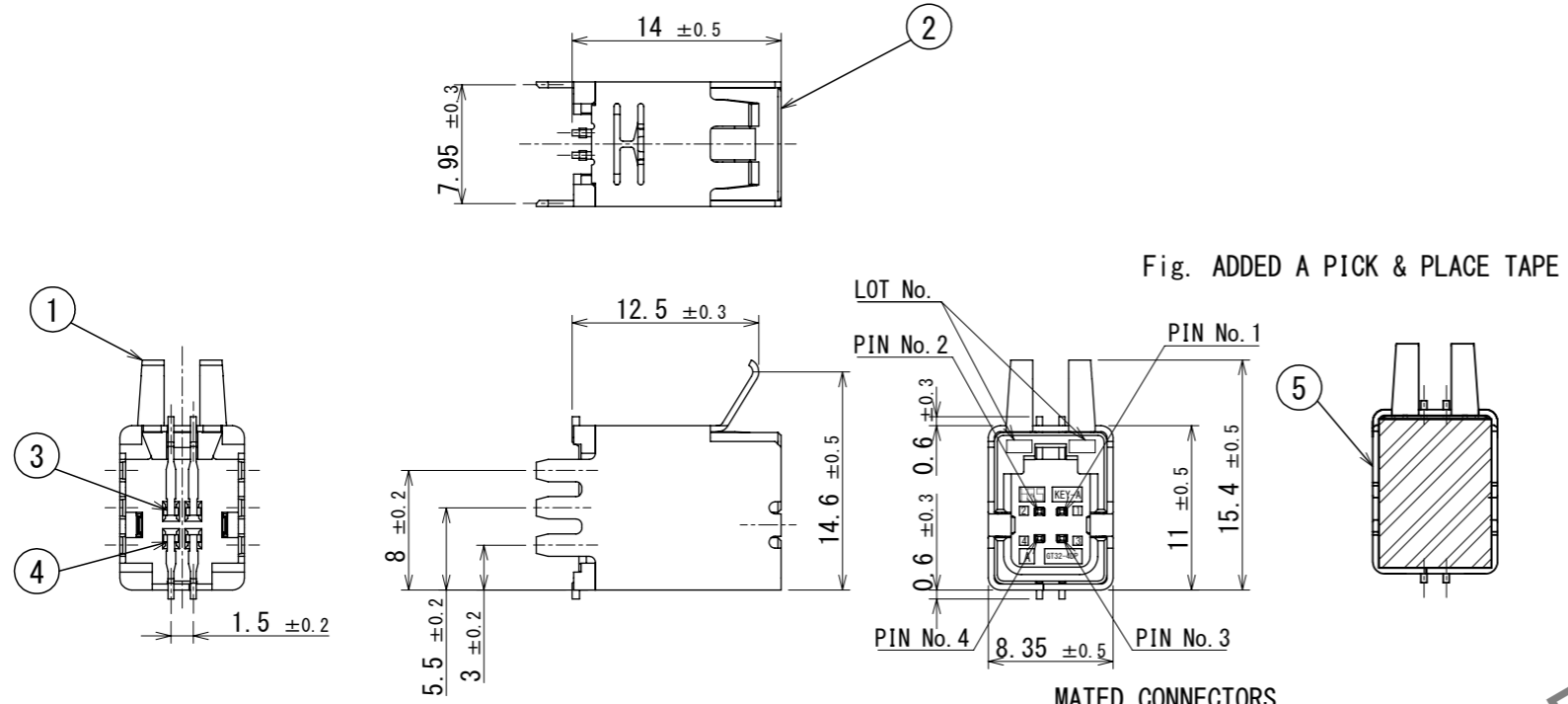
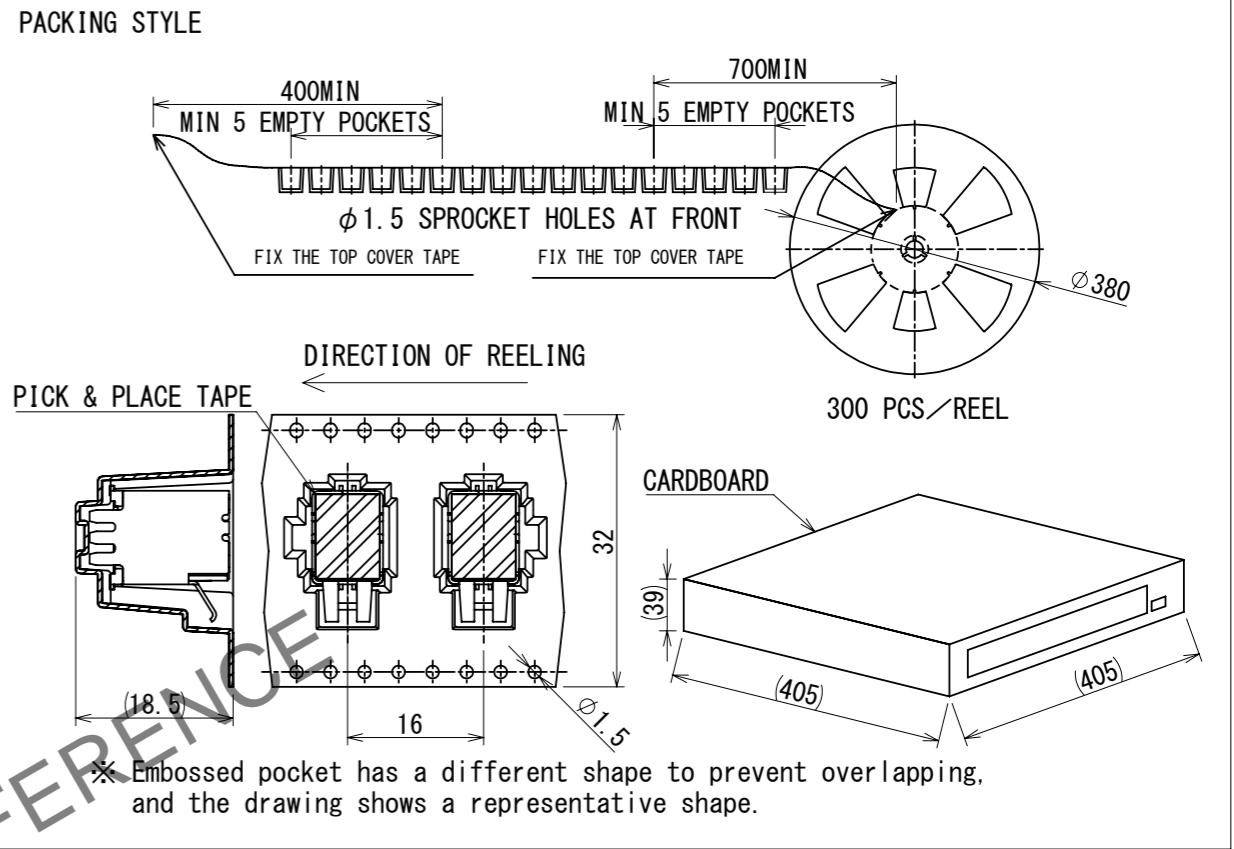
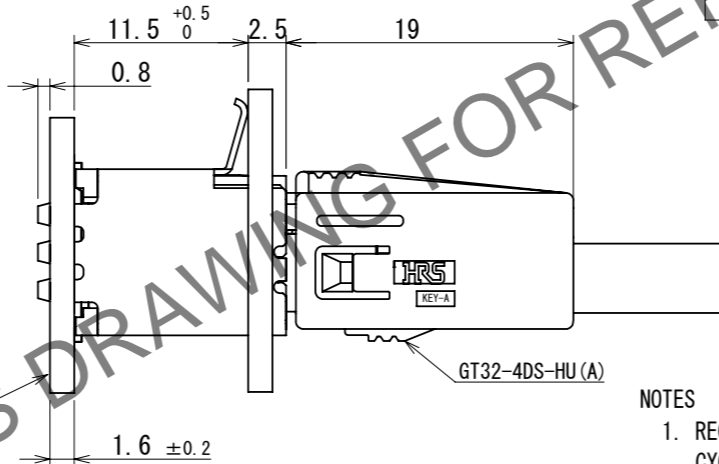


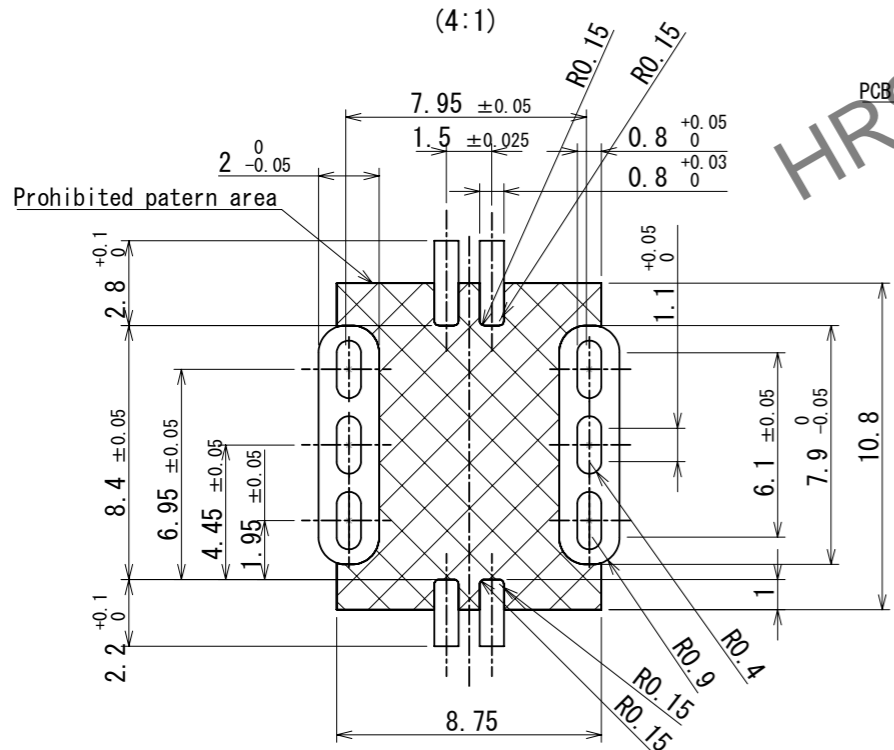
RoHS, ELV COMPLIANT



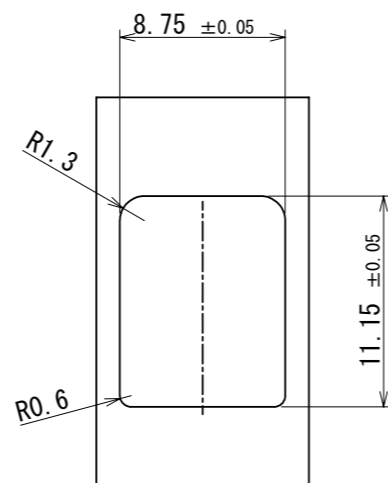
MATED CONNECTORS



RECOMMENDED PCB LAYOUT (4:1)

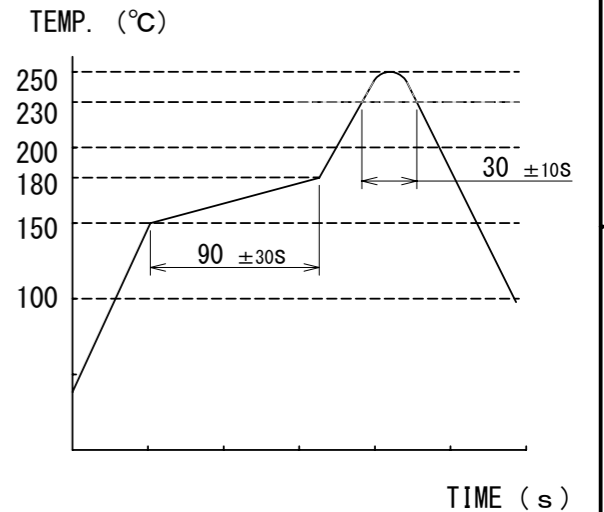


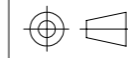

RECOMMENDED PANEL CUTOUT



NOTES

1. RECOMMENDED REFLOW PROFILE (SEE RIGHT GRAPH)
 CYCLE TIME: UP TO 2 CYCLES OF REFLOW SOLDERING ARE POSSIBLE UNDER THE CONDITIONS, PROVIDED THAT THERE IS A RETURN TO NOMAL TEMPERATURE BETWEEN THE FIRST AND SECOND CYCLE.
 PEAK TEMPERATURE: 250°C
 230°C MIN, FOR 20 TO 40 SECONDS.
 PREHEATING AREA 150~180°C FOR 60 TO 120 SECONDS.
2. HAND SOLDERING: 280~300°C, 2SECONDS MAX.
3. CONTACT COPLANARITY: 0.1mm MAX.
4. RECOMMENDED THICKNESS OF PCB: 1.6mm
5. RECOMMENDED THICKNESS OF SOLDERING PASTE: 0.12mm



3	BRASS	TIN PLATING							
2	PA	BROWN		5	POLYIMIDE		PICK & PLACE TAPE		
1	COPPER ALLOY	TIN PLATING		4	BRASS		TIN PLATING		
NO.	MATERIAL	FINISH	REMARKS	NO.	MATERIAL	FINISH	REMARKS		
UNITS mm			SCALE 2:1	COUNT 0	DESCRIPTION OF REVISIONS DIS-T-00018485		DESIGNED KN. YANAGIMOTO	CHECKED EJ. WAKATSUKI	DATE 2023. 10. 19
 HIROSE ELECTRIC CO., LTD.		APPROVED : AR. SHIRAI 2018. 02. 01 CHECKED : AR. SHIRAI 2018. 02. 01 DESIGNED : TS. KUBOTA 2018. 02. 01 DRAWN : TS. KUBOTA 2018. 02. 01			DRAWING NO. EDC-362123-30-01 PART NO. GT32-4DP-1.5V(A) (30) CODE NO. CL0782-0065-4-30				