

Apr.1.2026 Copyright 2026 HIROSE ELECTRIC CO., LTD. All Rights Reserved.
In case of consideration for using Automotive equipment / device which demand high reliability, kindly contact our sales window correspondents.

RoHS, ELV COMPLIANT

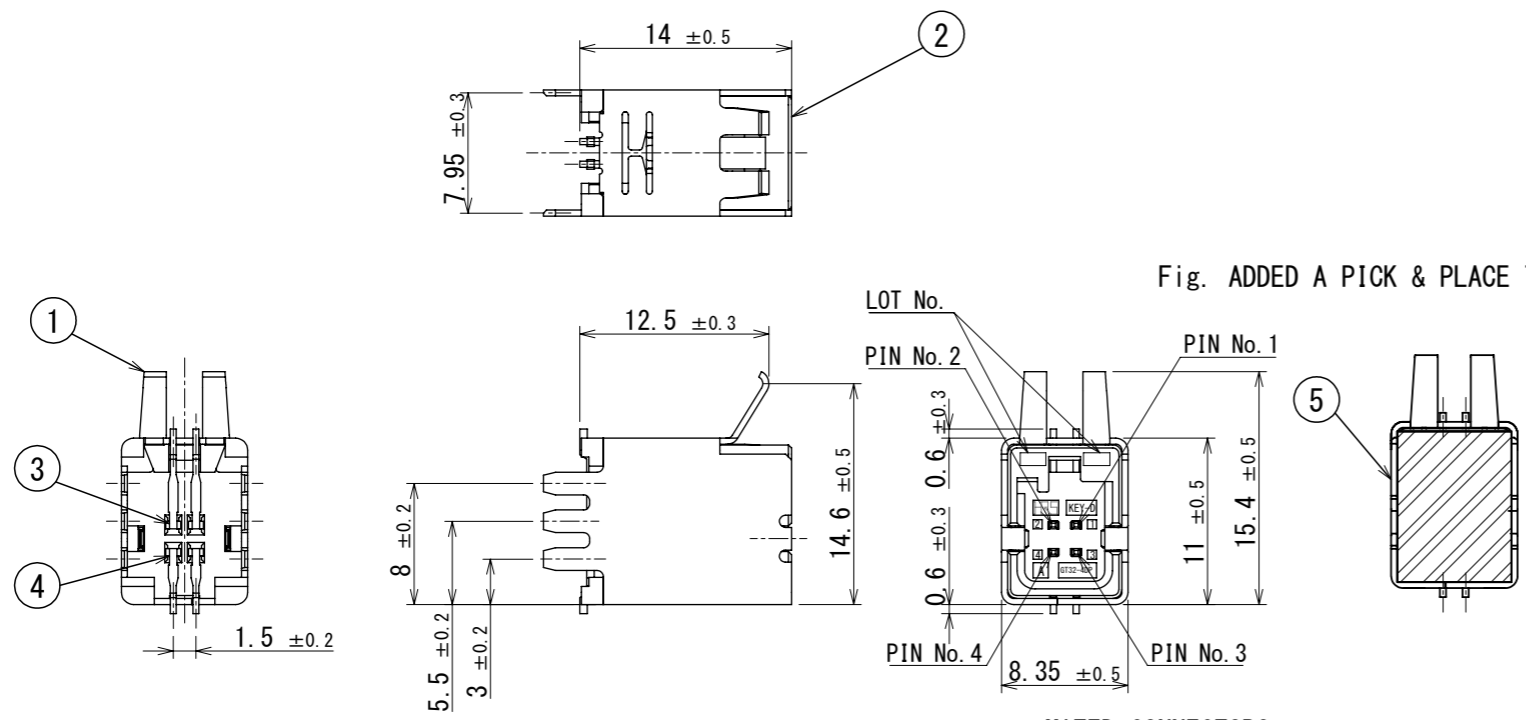
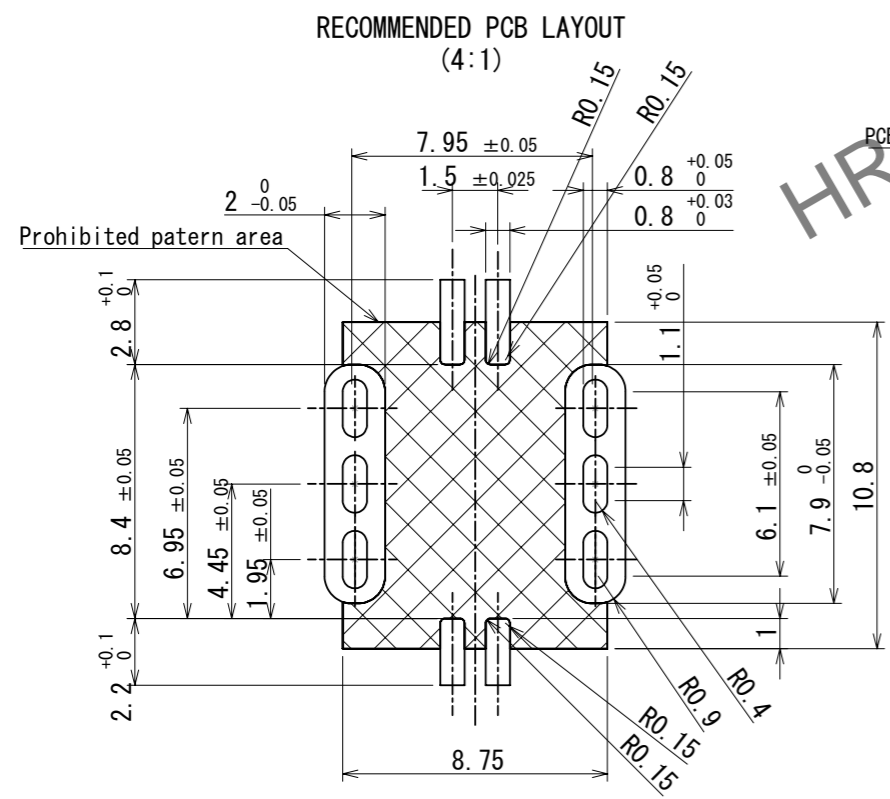
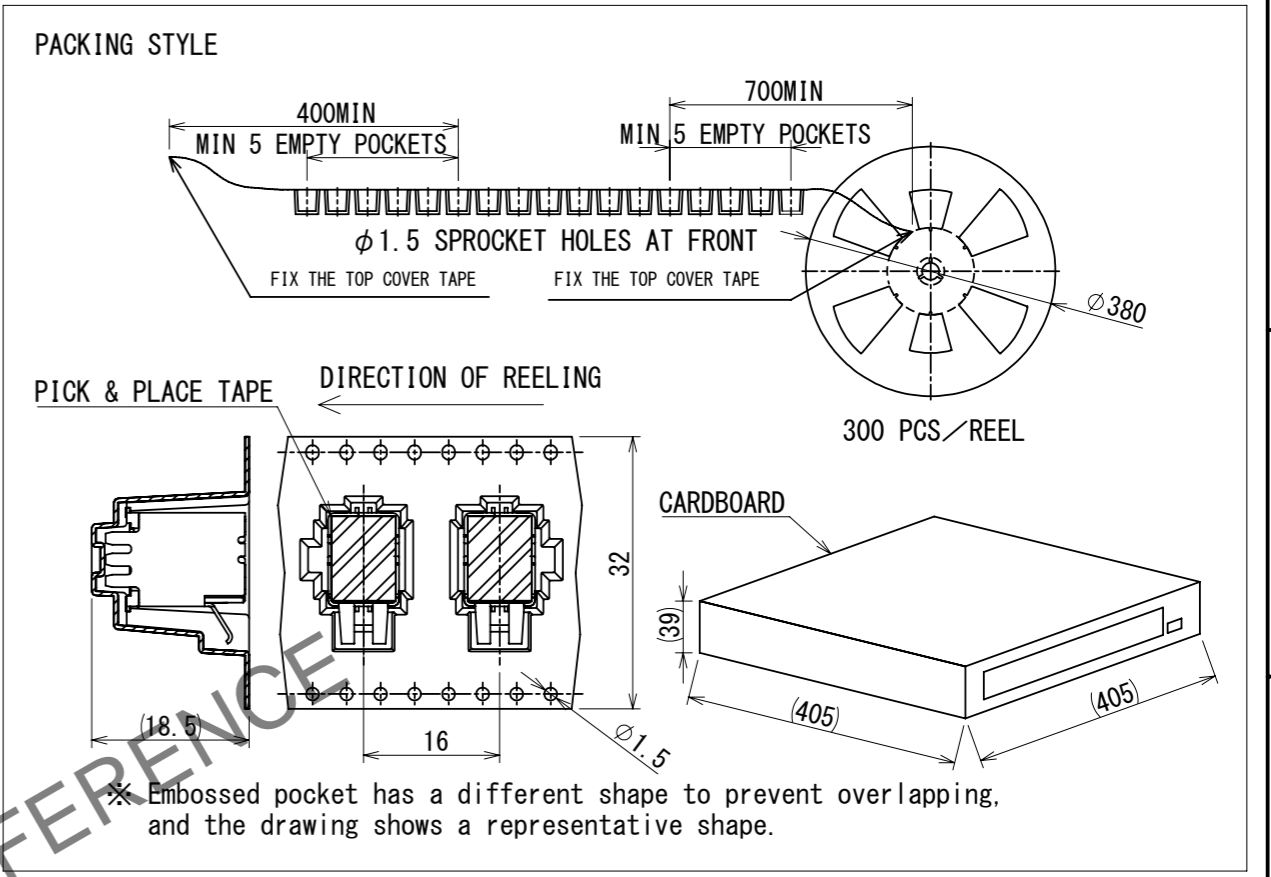
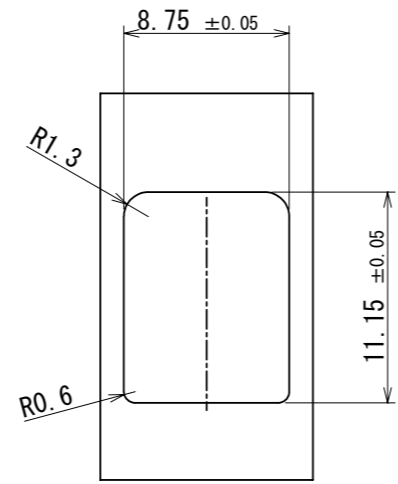


Fig. ADDED A PICK & PLACE TAPE

MATED CONNECTORS

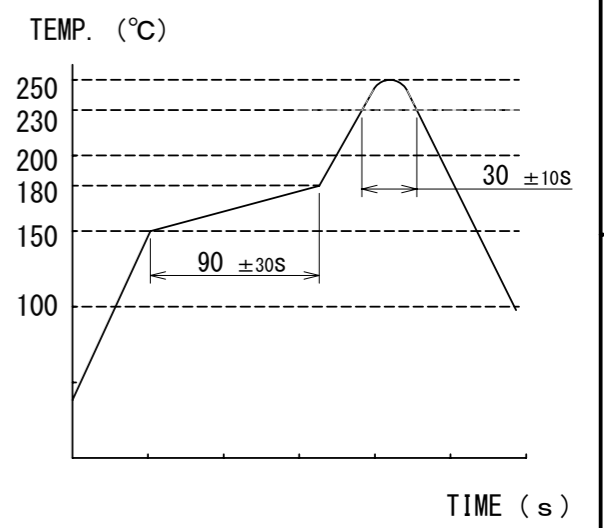


RECOMMENDED PANEL CUTOUT



NOTES

1. RECOMMENDED REFLOW PROFILE (SEE RIGHT GRAPH)
CYCLE TIME: UP TO 2 CYCLES OF REFLOW SOLDERING ARE POSSIBLE UNDER THE CONDITIONS, PROVIDED THAT THERE IS A RETURN TO NOMAL TEMPERATURE BETWEEN THE FIRST AND SECOND CYCLE.
PEAK TEMPERATURE: 250°C
230°C MIN, FOR 20 TO 40 SECONDS.
PREHEATING AREA 150~180°C FOR 60 TO 120 SECONDS.
2. HAND SOLDERING: 280~300°C, 2SECONDS MAX.
3. CONTACT COPLANARITY: 0.1mm MAX.
4. RECOMMENDED THICKNESS OF PCB: 1.6mm
5. RECOMMENDED THICKNESS OF SOLDERING PASTE: 0.12mm



3	BRASS	TIN PLATING	5	POLYIMIDE	PICK & PLACE TAPE		
2	PA	BLACK	4	BRASS	TIN PLATING		
1	COPPER ALLOY	TIN PLATING					
NO.	MATERIAL	FINISH	REMARKS	NO.	MATERIAL	FINISH	REMARKS
UNITS	mm	SCALE	2:1	COUNT	0	DESCRIPTION OF REVISIONS	DIS-T-00018485
DESIGNED		KN. YANAGIMOTO		CHECKED		EJ. WAKATSUKI	
DATE		2023. 10. 19		APPROVED		AR. SHIRAI 2018. 09. 07	
DRAWN		TS. KUBOTA 2018. 09. 05		CHECKED		TH. MIZUGUCHI 2018. 09. 06	
DESIGNED		TS. KUBOTA 2018. 09. 05		DRAWN		TS. KUBOTA 2018. 09. 05	
DRAWING NO.				EDC-362126-30-01			
PART NO.				GT32-4DP-1.5V(D) (30)			
CODE NO.				CL0782-0068-2-30			