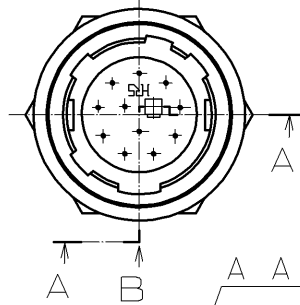
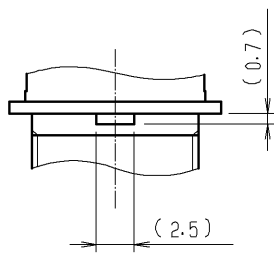
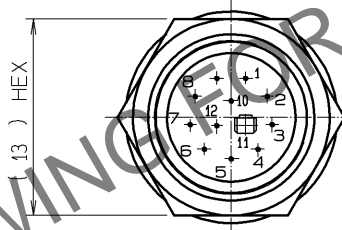
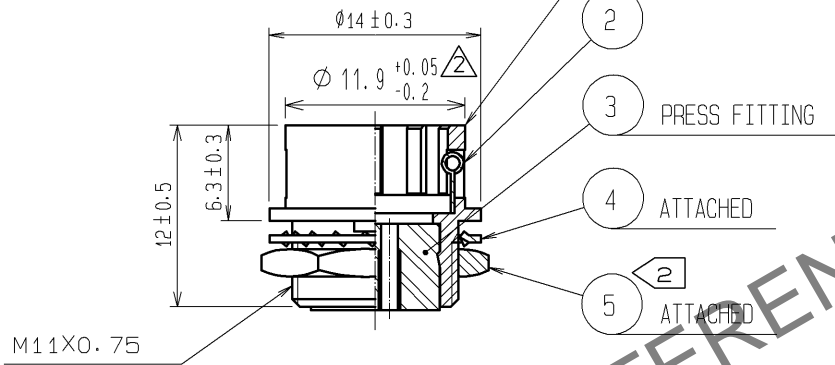
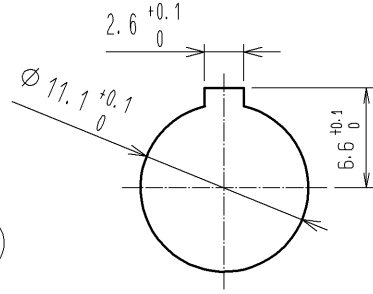


Jun.1.2026 Copyright 2026 HIROSE ELECTRIC CO., LTD. All Rights Reserved.
 In case of consideration for using Automotive equipment / device which demand high reliability, kindly contact our sales window correspondents.

B DETAIL OF MOUNTING GUIDE



PANEL CUTOUT
(t 0.7~2)



NOTES 1 APPLICABLE CRIMP CONTACT: HR10-PC-212(CL110-0514-3)
 (AWG#26 TO #30, INSULATION OUTER DIA Ø1 MAX)
 EXTRACTION TOOL: RP6-SC-TP(CL150-0039-0)
 THE RECOMMENDED CLAMP TORQUE OF REF.NO. ⑤ : 2N·m
 LOCTITE 243, HENKEL JAPAN OR EQUIVALENT IS RECOMMENDED TO
 PREVENT REF. NO. ⑤ FROM LOOSENING.

3	POLYBUTYLENE TEREPHTHALATE	(BLACK) UL94V-0			
2	STAINLESS STEEL		5	BRASS ①	NICKEL PLATING
1	ZINC ALLOY	MATTE FINISH NICKEL PLATED	4	PHOSPHOR BRONZE	NICKEL PLATING
NO.	MATERIAL	FINISH, REMARKS	NO.	MATERIAL	FINISH, REMARKS

UNITS mm		SCALE 2 : 1	COUNT ② 2	DESCRIPTION OF REVISIONS DIS-C-003736	DESIGNED HR. SATO	CHECKED HY. KISHI	DATE 14.11.25
-------------	--	----------------	--------------	--	----------------------	----------------------	------------------

HRS HIROSE ELECTRIC CO., LTD.	APPROVED : MO. SATOH	06.09.13	DRAWING NO.	EDC4-025181-71
	CHECKED : EJ. KUNII	06.09.11	PART NO.	HR10A-10R-12PC(71)
	DESIGNED : TP. KOMATSU	06.09.07	CODE NO.	CL110-0607-2-71
	DRAWN : TP. KOMATSU	06.09.07		② 1/1