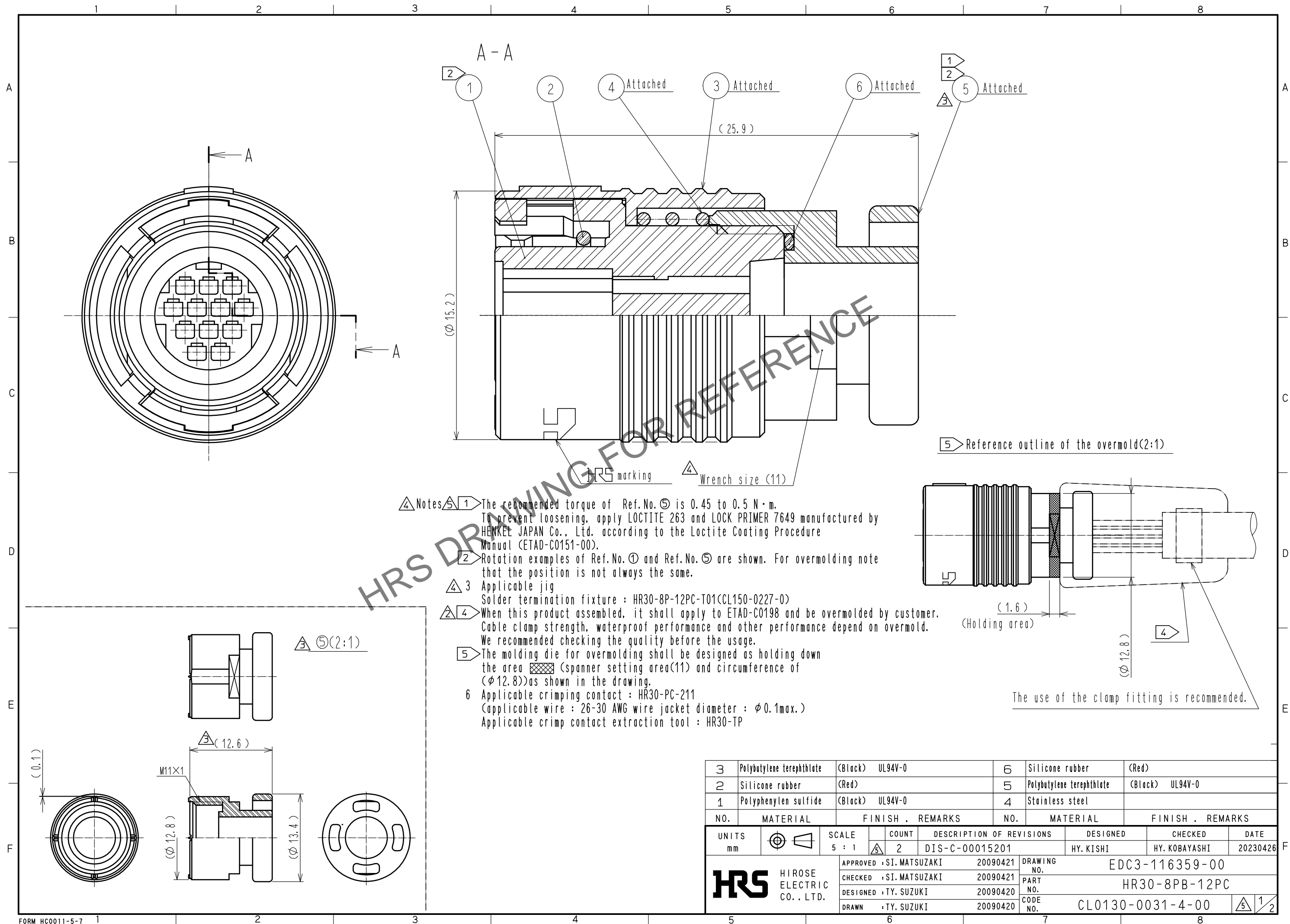


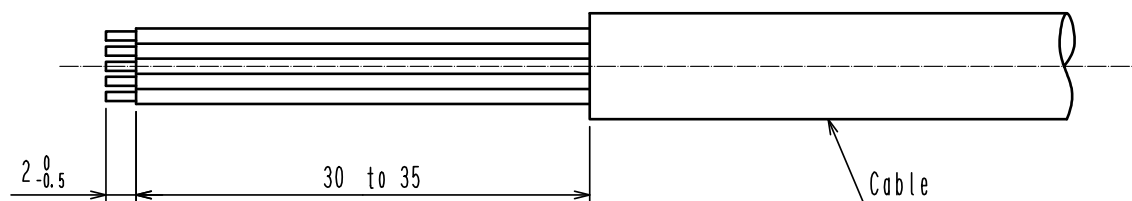
May.1.2024 Copyright 2024 HIROSE ELECTRIC CO., LTD. All Rights Reserved.
In case of consideration for using Automotive equipment / device which demand high reliability, kindly contact our sales window correspondents.



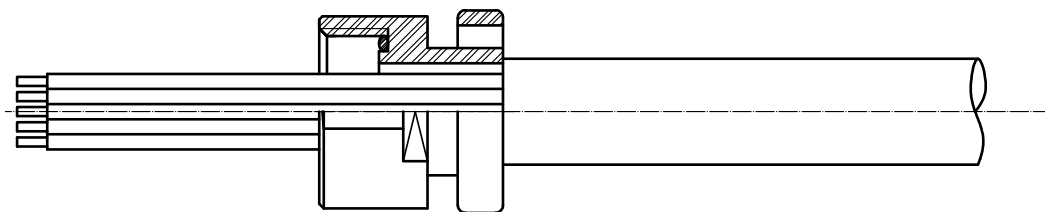
May.1.2024 Copyright 2024 HIROSE ELECTRIC CO., LTD. All Rights Reserved.
In case of consideration for using Automotive equipment / device which demand high reliability, kindly contact our sales window correspondents.

Assembly procedure

1. Strip the Cable Jacket.



2. Insert the Spacer to the Cable.



3. Insert the crimped insulated wires into the terminal.
Note) C/H shown in table 1. ⚠

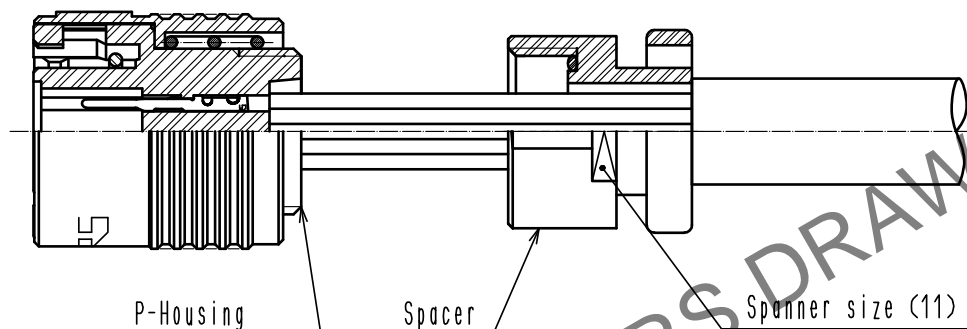
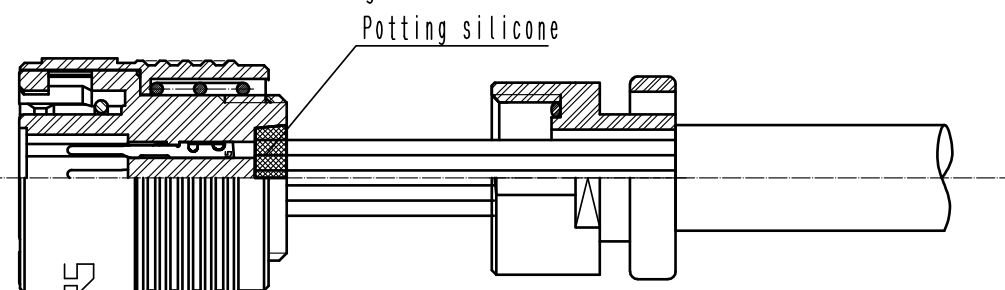


table 1 ⚠

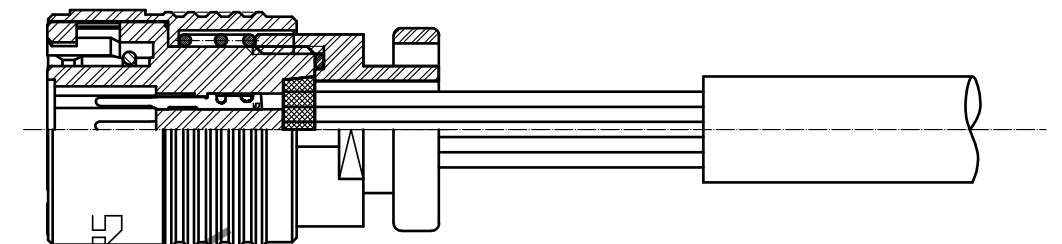
AWG SIZE	Contact wire crimp height	Covering crimp height
UL1571 Stranded wire AWG26	0.52~0.58	0.85~1.00
UL1571 Stranded wire AWG28	0.48~0.54	0.85~1.00
UL1571 Stranded wire AWG30	0.46~0.52	0.80~0.95

4. Potting silicone into the P-Housing.

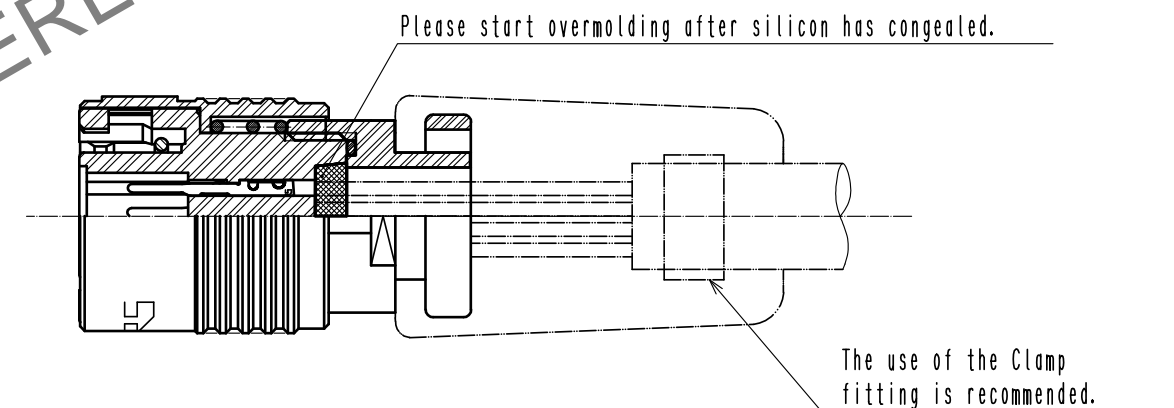


5. Assemble Spacer to the P-Housing.

⚠ The recommended clamp torque of Spacer to be 0.45 to 0.5 N·m.
To prevent loosening, apply LOCTITE 263 and LOCK PRIMER 7649 manufactured by HENKEL JAPAN Co., Ltd. according to the Loctite Coating Procedure Manual (ETAD-C0151-00).

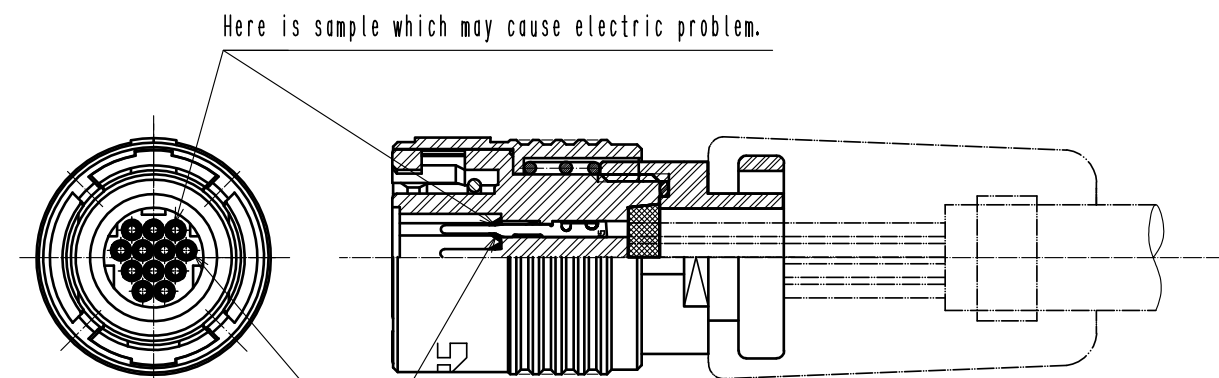


6. Overmolding.



7. After Overmolding.

Please check whether silicon and overmold has exceeded to edge of contact hole which is mating point side.



Silicone or Overmold.

(Even if one of exceeding of overmold or silicone, it may cause electric problem.)