

Jan.1.2025 Copyright 2025 HIROSE ELECTRIC CO., LTD. All Rights Reserved.
In case of consideration for using Automotive equipment / device which demand high reliability, kindly contact our sales window correspondents.

Fig.2(1:1)

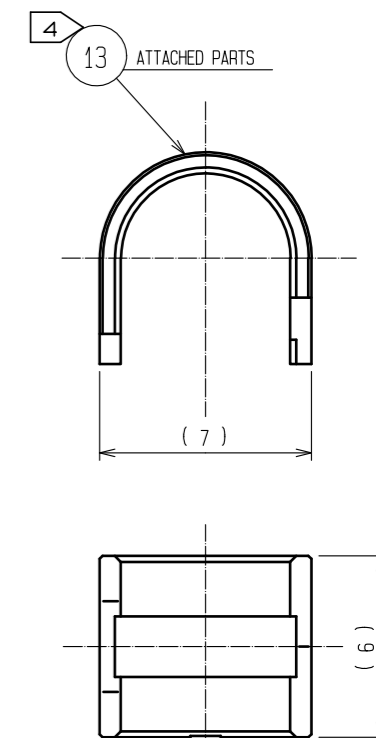
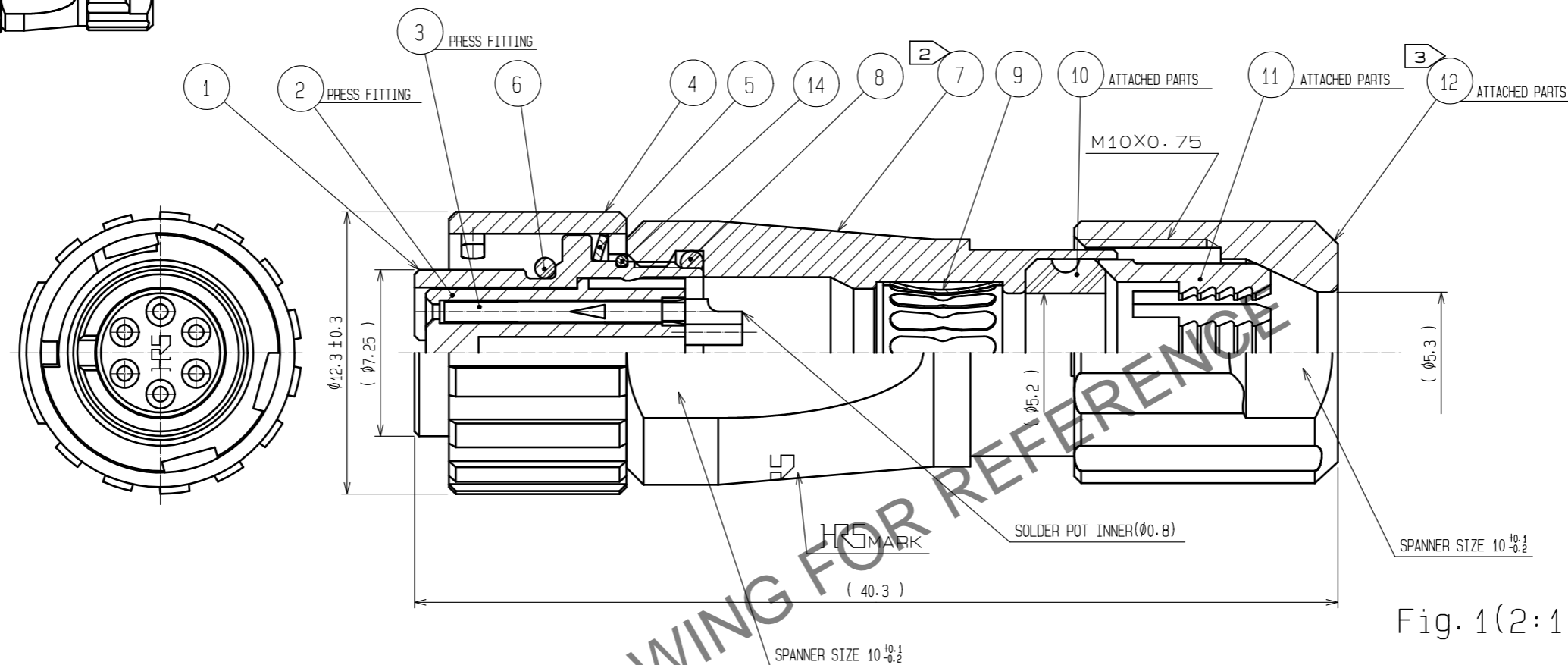
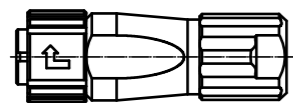
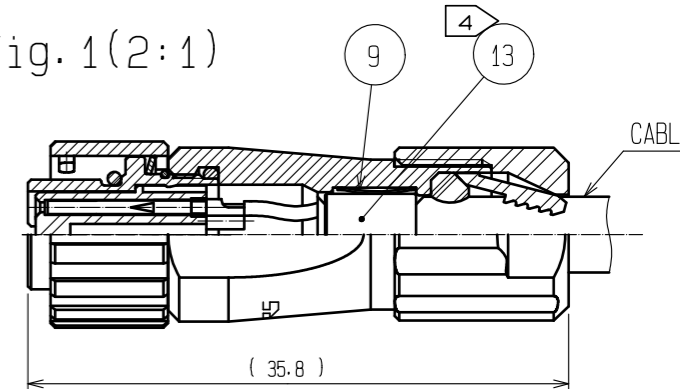


Fig.1(2:1)



- NOTES
- ① PLATING(REF.NO. ③)
CONTACT AREA : GOLD 0.2μm min
OTHERS : GOLD AND NICKEL
UNDER PLATING : NICKEL 2μm min
 - ② THE RECOMMENDED CLAMP TORQUE OF REF.NO. ⑦ TO BE 1 TO 1.5N·m.
THREAD LOCKER TO THE THREADED PORTION OF REF.NO. ① APPLIES TO PREVENT REF.NO. ⑦ FROM LOOSING.
RECOMMENDED THREAD LOCKER:LOCTITE 263, HENKEL JAPAN LTD.
 - ③ THE RECOMMENDED CLAMP TORQUE OF REF.NO. ⑫ TO BE 0.8 TO 1N·m.
THREAD LOCKER AND LOCK PRIMER TO THE THREADED PORTION M10X0.75 OF REF.NO. ⑦ APPLIES TO PREVENT REF.NO. ⑫ FROM LOOSING.
RECOMMENDED THREAD LOCKER AND LOCK PRIMER : LOCTITE 263, LOCK PRIMER 7649, HENKEL JAPAN LTD.
 - ④ FASTEN REF.NO. ⑬ TO THE CABLE WITH THE CABLE CRIMPING TOOL.
AND MAKE REF.NO. ⑬ CONTACT WITH REF.NO. ⑨ (REFER TO Fig.1).
REFER TO THE TECHNICAL SPECIFICATION ETAD-C0099 FOR DETAILS.
APPLICABLE CABLE CRIMPING TOOL : HR10A-TC-02(CL150-0041-2)(THE HOLE DIAMETER FOR CRIMPING:Ø5.3)
 - ⑤ Fig.2 SHOWS THE APPEARANCE AFTER ASSEMBLY.
 - ⑥ APPLICABLE CABLE ASSEMBLY FIXTURE : LF07BP-T01(CL150-0232-0)
CABLE ASSEMBLY FIXTURE IS USED AS A RECEPTACLE STAND OF EXTRACT
AND THE PART No. ① OF AN ASSEMBLY.
 - ⑦ ROTATION EXAMPLES OF No. ④, ⑦ AND ⑫ TO ① ARE SHOWN.

| NO. | MATERIAL | FINISH . REMARKS | NO. | MATERIAL | FINISH . REMARKS |
|-----|--------------------|------------------|-----|--------------------|-------------------------------|
| 7 | ZINC ALLOY | NICKEL PLATING | 14 | STAINLESS STEEL | |
| 6 | CHLOROPRENE RUBBER | (BLACK) | 13 | BRASS | NICKEL PLATING |
| 5 | STAINLESS STEEL | | 12 | PPS | (NATURAL·BROWN) UL94V-0 |
| 4 | ZINC ALLOY | NICKEL PLATING | 11 | POLYAMIDE | (NATURAL·MILKY WHITE) UL94V-0 |
| 3 | PHOSPHOR BRONZE | ① | 10 | CHLOROPRENE RUBBER | (BLACK) |
| 2 | PPS | (BLACK) UL94V-0 | 9 | PHOSPHOR BRONZE | NICKEL PLATING |
| 1 | ZINC ALLOY | NICKEL PLATING | 8 | CHLOROPRENE RUBBER | (BLACK) |
| NO. | MATERIAL | FINISH . REMARKS | NO. | MATERIAL | FINISH . REMARKS |

| | | | | | | | |
|--------------------------------------|--|-----------------------------------|---------------------------------|--|-----------------------|----------------------|------------------|
| UNITS mm | | SCALE 4 : 1 | COUNT 2 | DESCRIPTION OF REVISIONS DIS-C-00017013 | DESIGNED HT. ZENBA | CHECKED EJ. KUNII | DATE 20240311 |
| HRS HIROSE ELECTRIC CO., LTD. | | APPROVED : HY. KOBAYASHI 20180222 | DRAWING NO. EDC-113835-31-00 | | | | |
| | | CHECKED : HY. KOBAYASHI 20180222 | PART NO. LF07WBP-6S(31) | | | | |
| | | DESIGNED : TY. SUZUKI 20180222 | CODE NO. CL0136-0001-1-31 | | | | |
| | | DRAWN : TY. SUZUKI 20180222 | | | | | |