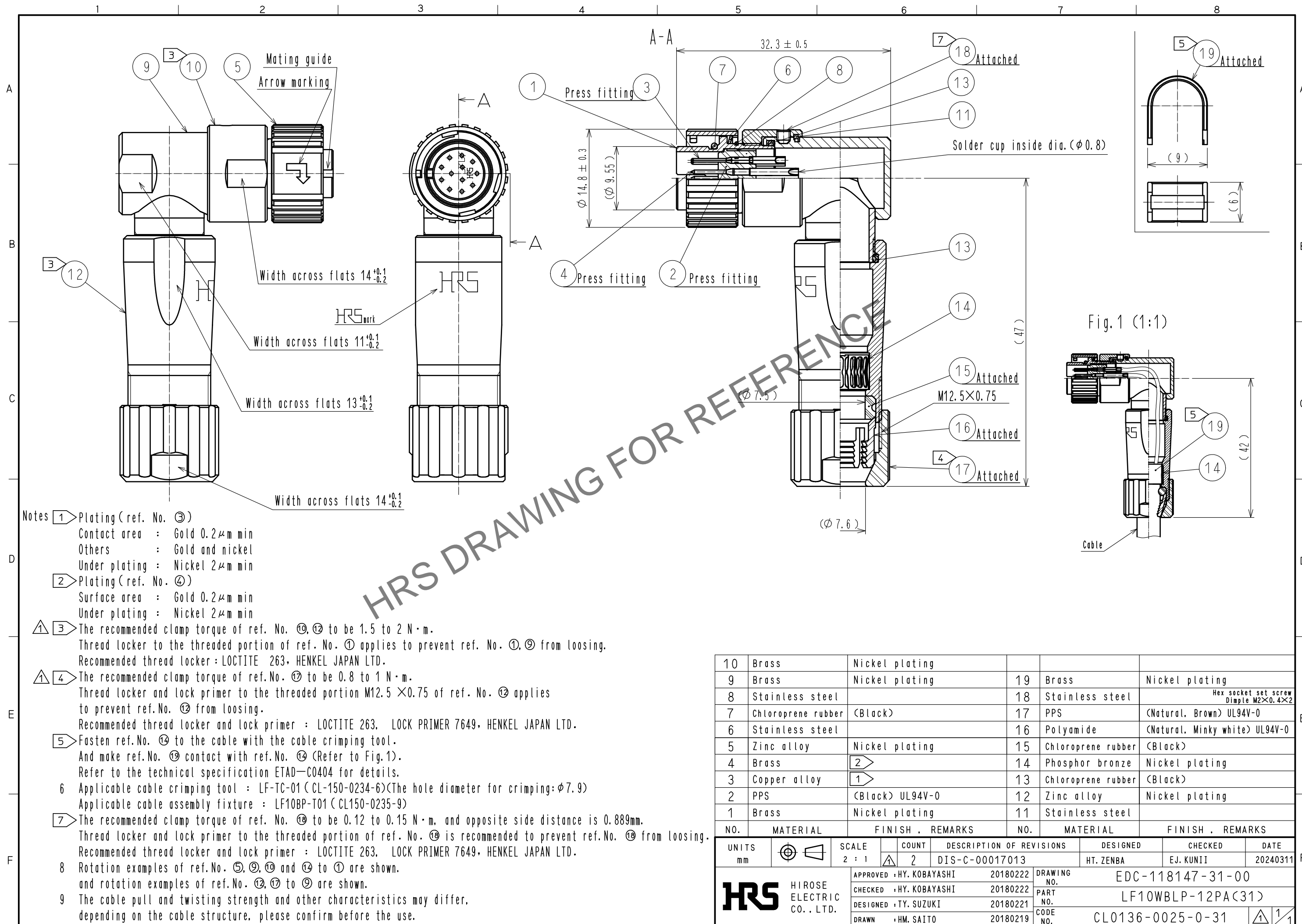


Feb.1.2025 Copyright 2025 HIROSE ELECTRIC CO., LTD. All Rights Reserved.  
In case of consideration for using Automotive equipment / device which demand high reliability, kindly contact our sales window correspondents.



- Notes**
- ① Plating (ref. No. ③)  
Contact area : Gold 0.2μm min  
Others : Gold and nickel  
Under plating : Nickel 2μm min
  - ② Plating (ref. No. ④)  
Surface area : Gold 0.2μm min  
Under plating : Nickel 2μm min
  - ③ The recommended clamp torque of ref. No. ⑩, ⑪ to be 1.5 to 2 N·m.  
Thread locker to the threaded portion of ref. No. ① applies to prevent ref. No. ①, ⑨ from loosening.  
Recommended thread locker : LOCTITE 263, HENKEL JAPAN LTD.
  - ④ The recommended clamp torque of ref. No. ⑰ to be 0.8 to 1 N·m.  
Thread locker and lock primer to the threaded portion M12.5 × 0.75 of ref. No. ⑫ applies to prevent ref. No. ⑫ from loosening.  
Recommended thread locker and lock primer : LOCTITE 263, LOCK PRIMER 7649, HENKEL JAPAN LTD.
  - ⑤ Fasten ref. No. ⑭ to the cable with the cable crimping tool.  
And make ref. No. ⑱ contact with ref. No. ⑭ (Refer to Fig. 1).  
Refer to the technical specification ETAD-C0404 for details.
  - ⑥ Applicable cable crimping tool : LF-TC-01 (CL-150-0234-6) (The hole diameter for crimping: φ7.9)  
Applicable cable assembly fixture : LF10BP-T01 (CL150-0235-9)
  - ⑦ The recommended clamp torque of ref. No. ⑱ to be 0.12 to 0.15 N·m, and opposite side distance is 0.889mm.  
Thread locker and lock primer to the threaded portion of ref. No. ⑱ is recommended to prevent ref. No. ⑱ from loosening.  
Recommended thread locker and lock primer : LOCTITE 263, LOCK PRIMER 7649, HENKEL JAPAN LTD.
  - ⑧ Rotation examples of ref. No. ⑤, ⑨, ⑩ and ⑭ to ① are shown.  
and rotation examples of ref. No. ⑫, ⑰ to ⑨ are shown.
  - ⑨ The cable pull and twisting strength and other characteristics may differ, depending on the cable structure, please confirm before the use.

NO.	MATERIAL	FINISH . REMARKS	NO.	MATERIAL	FINISH . REMARKS
10	Brass	Nickel plating	19	Brass	Nickel plating
9	Brass	Nickel plating	18	Stainless steel	Hex socket set screw Dimple M2×0.4×2
8	Stainless steel		17	PPS	(Natural, Brown) UL94V-0
7	Chloroprene rubber	(Black)	16	Polyamide	(Natural, Minky white) UL94V-0
6	Stainless steel		15	Chloroprene rubber	(Black)
5	Zinc alloy	Nickel plating	14	Phosphor bronze	Nickel plating
4	Brass	②	13	Chloroprene rubber	(Black)
3	Copper alloy	①	12	Zinc alloy	Nickel plating
2	PPS	(Black) UL94V-0	11	Stainless steel	
1	Brass	Nickel plating			

UNITS	SCALE	COUNT	DESCRIPTION OF REVISIONS	DESIGNED	CHECKED	DATE
mm	2 : 1	2	DIS-C-00017013	HT. ZENBA	EJ. KUNII	20240311

APPROVED	CHECKED	DESIGNED	DRAWN	DRAWING NO.	PART NO.	CODE NO.
HY. KOBAYASHI 20180222	HY. KOBAYASHI 20180222	TY. SUZUKI 20180221	HM. SAITO 20180219	EDC-118147-31-00	LF10WBLP-12PA(31)	CL0136-0025-0-31