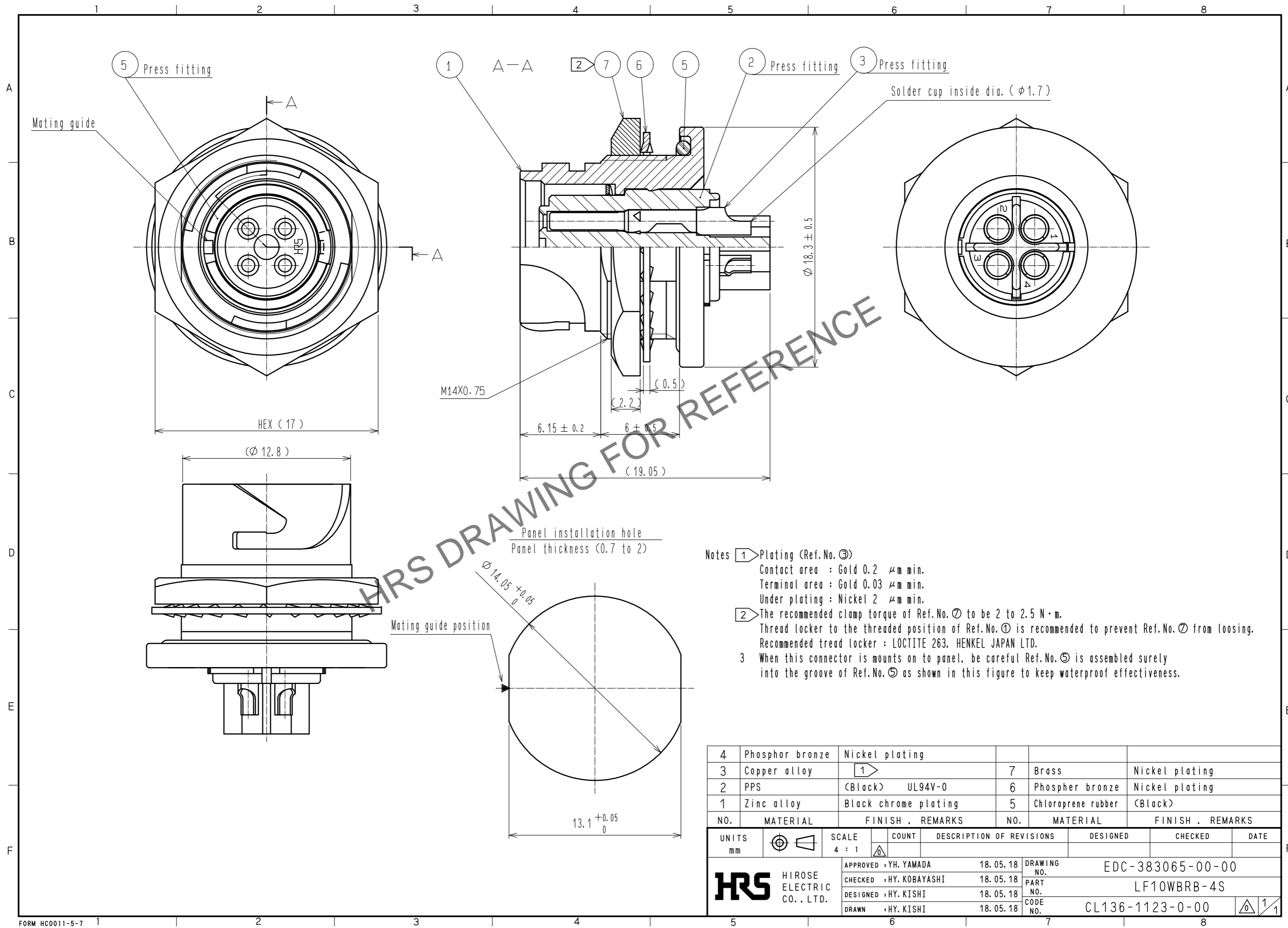


Jan.1.2025 Copyright 2025 HIROSE ELECTRIC CO., LTD. All Rights Reserved.
 In case of consideration for using Automotive equipment / device which demand high reliability, kindly contact our sales window correspondents.



- Notes
- ① Plating (Ref.No. ③)
 Contact area : Gold 0.2 μm min.
 Terminal area : Gold 0.03 μm min.
 Under plating : Nickel 2 μm min.
 - ② The recommended clamp torque of Ref.No. ⑦ to be 2 to 2.5 N·m.
 Thread locker to the threaded position of Ref.No. ① is recommended to prevent Ref.No. ⑦ from loosening.
 Recommended tread locker : LOCTITE 263, HENKEL JAPAN LTD.
 - ③ When this connector is mounts on to panel, be careful Ref.No. ⑤ is assembled surely into the groove of Ref.No. ⑤ as shown in this figure to keep waterproof effectiveness.

NO.	MATERIAL	FINISH . REMARKS	NO.	MATERIAL	FINISH . REMARKS
4	Phosphor bronze	Nickel plating			
3	Copper alloy	①	7	Brass	Nickel plating
2	PPS	(Black) UL94V-0	6	Phosphor bronze	Nickel plating
1	Zinc alloy	Black chrome plating	5	Chloroprene rubber	(Black)

UNITS	SYMBOLS	SCALE	COUNT	DESCRIPTION OF REVISIONS	DESIGNED	CHECKED	DATE
mm	⊕, △	4 : 1	△				
APPROVED : YH. YAMADA				18.05.18	DRAWING NO. EDC-383065-00-00		
CHECKED : HY. KOBAYASHI				18.05.18	PART NO. LF10WBRB-4S		
DESIGNED : HY. KISHI				18.05.18	CODE NO. CL136-1123-0-00		
DRAWN : HY. KISHI				18.05.18	1/1		