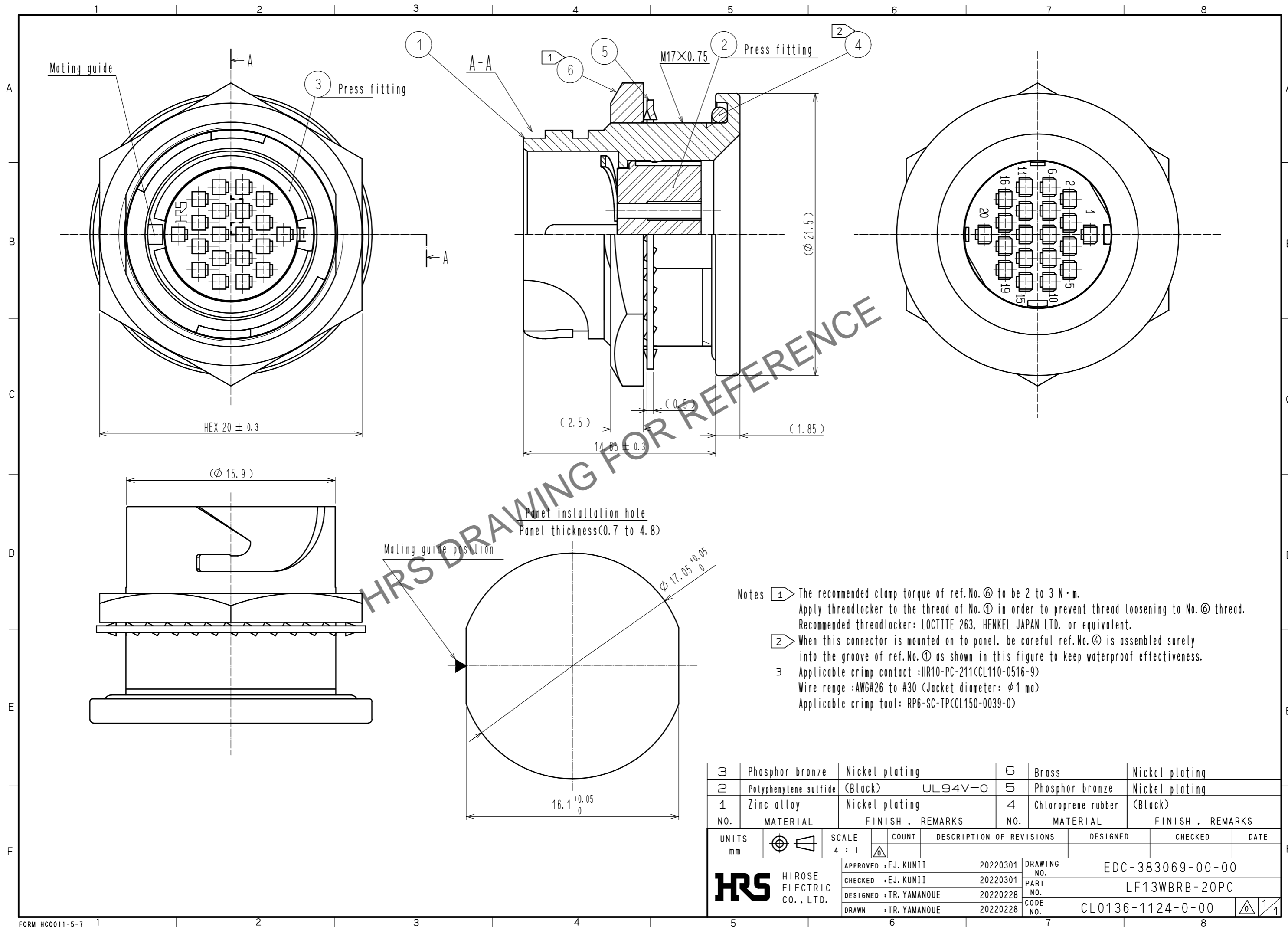


Jan.1.2025 Copyright 2025 HIROSE ELECTRIC CO., LTD. All Rights Reserved.  
In case of consideration for using Automotive equipment / device which demand high reliability, kindly contact our sales window correspondents.



- Notes
- ① The recommended clamp torque of ref.No.⑥ to be 2 to 3 N·m.  
Apply threadlocker to the thread of No.① in order to prevent thread loosening to No.⑥ thread.  
Recommended threadlocker: LOCTITE 263, HENKEL JAPAN LTD. or equivalent.
  - ② When this connector is mounted on to panel, be careful ref.No.④ is assembled surely into the groove of ref.No.① as shown in this figure to keep waterproof effectiveness.
  - ③ Applicable crimp contact :HR10-PC-211(CL110-0516-9)  
Wire range :AWG#26 to #30 (Jacket diameter: φ1 mm)  
Applicable crimp tool: RP6-SC-TP(CL150-0039-0)

3	Phosphor bronze	Nickel plating	6	Brass	Nickel plating			
2	Polyphenylene sulfide	(Black) UL94V-0	5	Phosphor bronze	Nickel plating			
1	Zinc alloy	Nickel plating	4	Chloroprene rubber	(Black)			
NO.	MATERIAL	FINISH . REMARKS	NO.	MATERIAL	FINISH . REMARKS			
UNITS	mm	SCALE	4 : 1	COUNT	DESCRIPTION OF REVISIONS	DESIGNED	CHECKED	DATE
<b>HRS</b> HIROSE ELECTRIC CO., LTD.		APPROVED :EJ. KUNII	20220301	DRAWING NO.	EDC-383069-00-00			
		CHECKED :EJ. KUNII	20220301	PART NO.	LF13WBRB-20PC			
		DESIGNED :TR. YAMANOUE	20220228	CODE NO.	CL0136-1124-0-00			
		DRAWN :TR. YAMANOUE	20220228					