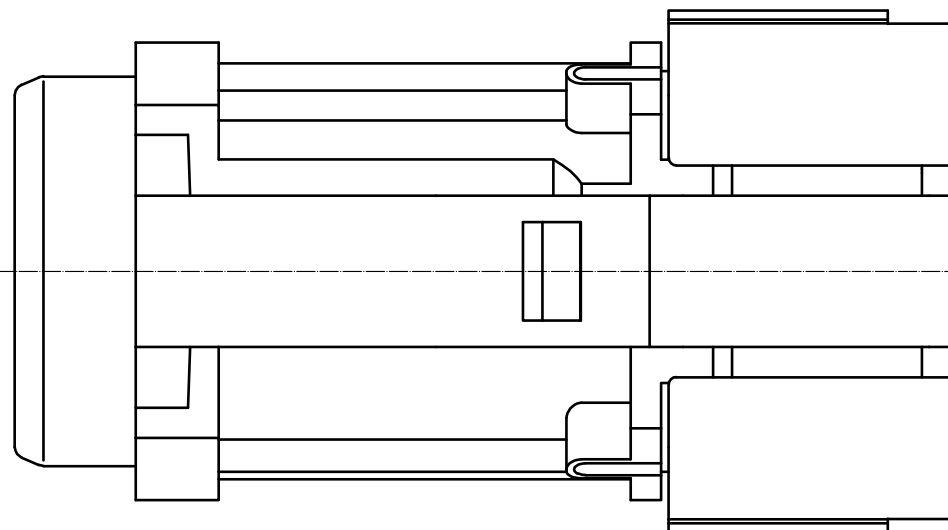
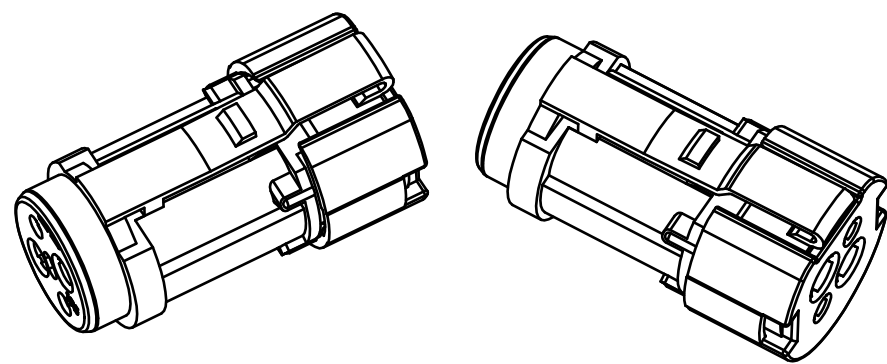


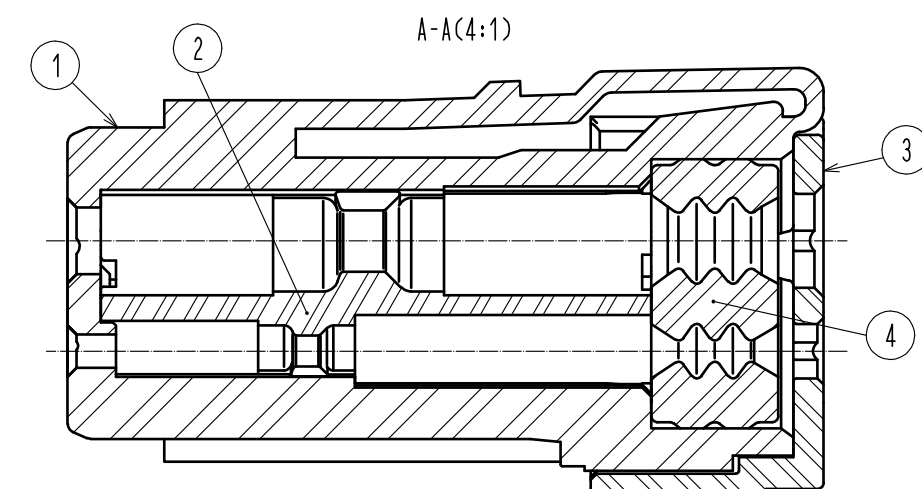
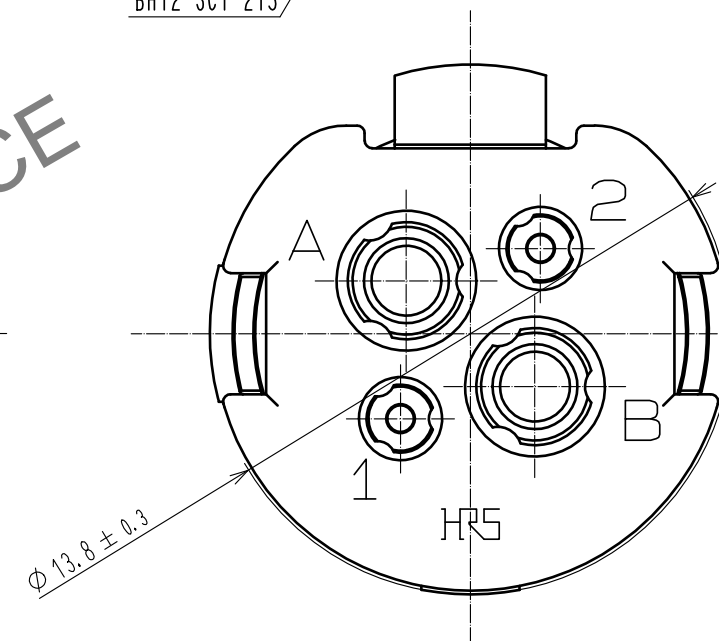
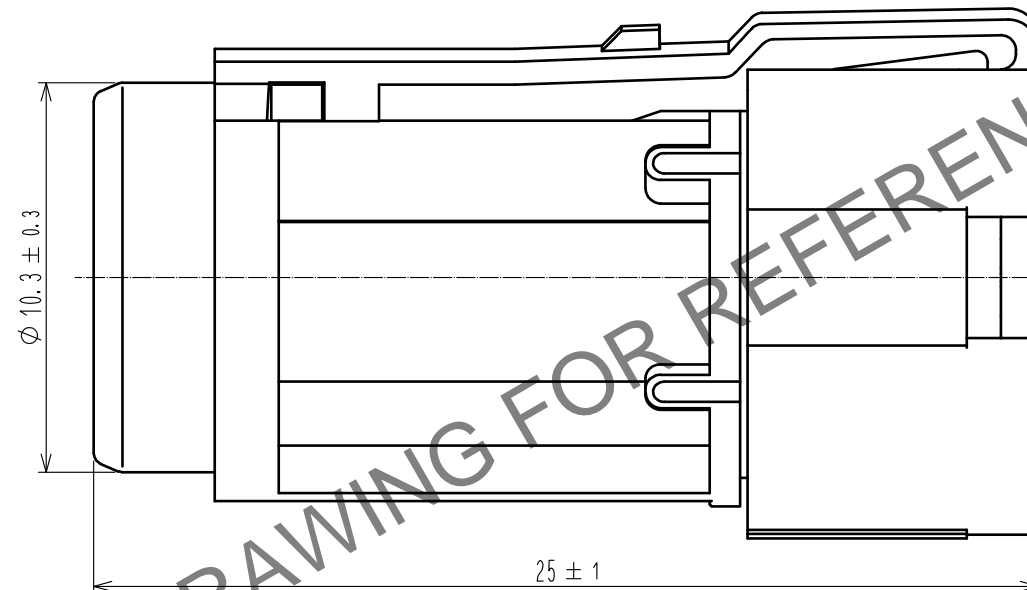
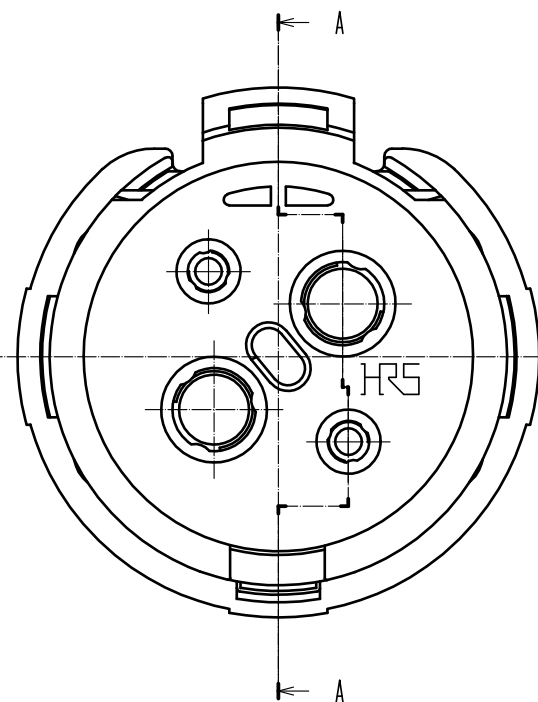
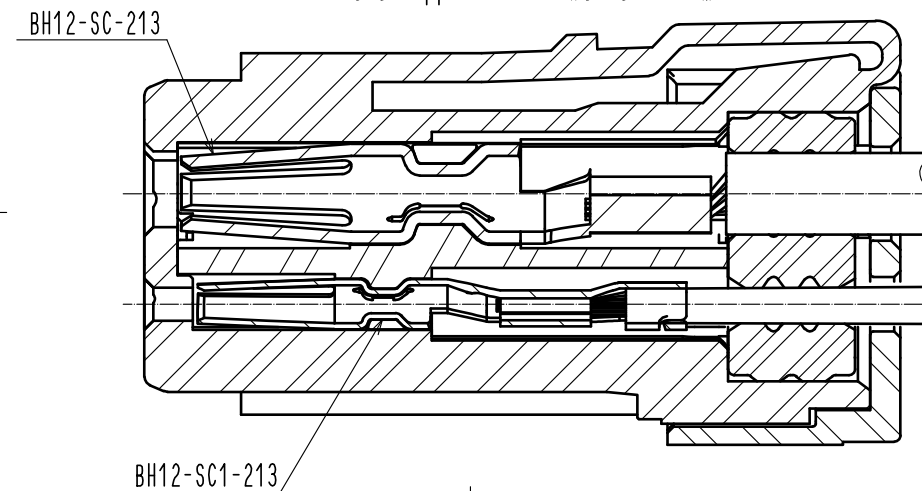
Apr.1.2024 Copyright 2024 HIROSE ELECTRIC CO., LTD. All Rights Reserved.  
In case of consideration for using Automotive equipment / device which demand high reliability, kindly contact our sales window correspondents.

△ Shape change

Isometric drawing(2:1)



A-A The state applicable contacts assembled. (4:1)



- Notes
1. This product is delivered disassembled.
  2. Applicable crimp contact  
Power : BH12-SC-213(CL140-0014-0-00) (Applicable wire:AWG#14 to 16 Wire jacket diameter:φ2.6 to 3.0)  
Signal : BH12-SC1-213(CL140-0015-0-00) (Applicable wire:AWG#22 to 24 Wire jacket diameter:φ1.4 to 1.6)
  3. The assembly of this product applies to the manual ETAD-C0454-00.
  4. The cable pull and twisting strength, waterproof tightness and other characteristics may differ, depending on the cable structure, please confirm before the use.
  - △ 5. Please do not use this connector in the condition of incomplete mating.  
Otherwise, the electrical performance, waterproofness, and lock strength cannot meet the defined specifications.
  - △ 6. Remove the plug while pressing with a finger the lock spring on the plug to unlock.  
To prevent the lock hanger from being damaged or the cables from being disconnected, do not remove the plug when it is locked.  
Please avoid force is applied to particular cable.

2	PBT	(Black) UL94V-0	4	シリコンゴム	(Red)
1	PBT	(Black) UL94V-0	3	PBT	(Black) UL94V-0
NO.	MATERIAL	FINISH . REMARKS	NO.	MATERIAL	FINISH . REMARKS
UNITS mm		SCALE 5 : 1	COUNT 1	DESCRIPTION OF REVISIONS DIS-C-00004209	DESIGNED HN. TANAKA
		APPROVED	YH. YAMADA	20200128	DRAWING NO. EDC-390397-00-00
		CHECKED	HN. TANAKA	20200128	PART NO. BH12WP-4SC
		DESIGNED	SH. KOYAMA	20200128	CODE NO. CL140-0010-0-00
		DRAWN	SH. KOYAMA	20200128	1/1