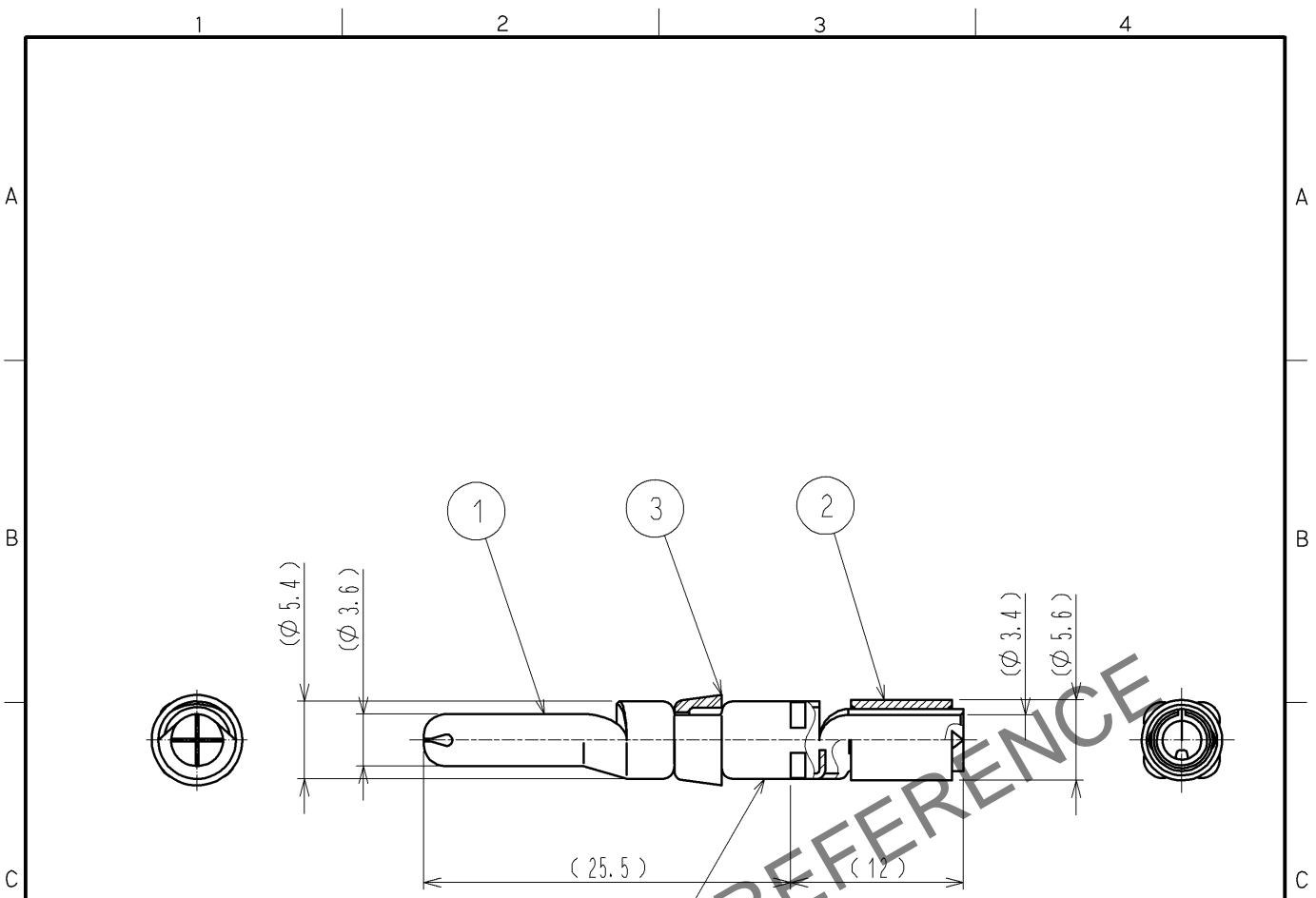


Sep.1.2024 Copyright 2024 HIROSE ELECTRIC CO., LTD. All Rights Reserved.
 In case of consideration for using Automotive equipment / device which demand high reliability, kindly contact our sales window correspondents.



MARKING POSITION OF APPLICABLE WIRE SIZE :10

HRS DRAWING FOR REFERENCE

- NOTES
- 1 APPLICABLE CRIMPING TOOL:JIS C 9711(COMPRESSION TOOLS FOR WIRE CONNECTORS OF INTERIOR WIRING)
 APPLICABLE DIE SIZE:5.5
 - 2 APPLICABLE EXTRACTION TOOL:HR41-TP
 - 3 ONE BAG INCLUDES 3PCS OF PRODUCTS.
 - 4 PLATING(REF. NO. ①)
 CONTACT PLATING:GOLD 0.76μm min.
 TERMINAL AREA:TIN 1μm min.
 OTHERS:NIKEL 2μm min.

2	COPPER	TIN PLATING						
1	COPPER ALLOY	4	3	POLYBUTYLENE TEREPHTHALATE	(WHITE) UL94V-0			
NO.	MATERIAL	FINISH	REMARKS	NO.	MATERIAL	FINISH	REMARKS	
UNITS mm		SCALE 2 : 1	COUNT 	DESCRIPTION OF REVISIONS		DESIGNED	CHECKED	DATE
HIROSE ELECTRIC CO., LTD.		APPROVED :SU. OBARA	12.03.15	DRAWING NO.		EDC4-117434-01		
		CHECKED :SU. OBARA	12.03.15	PART NO.		HR41-PC-111(01)		
		DESIGNED :HT. ZENBA	12.03.14	CODE NO.		CL141-0002-0-01		
		DRAWN :HT. ZENBA	12.03.14			1/1		